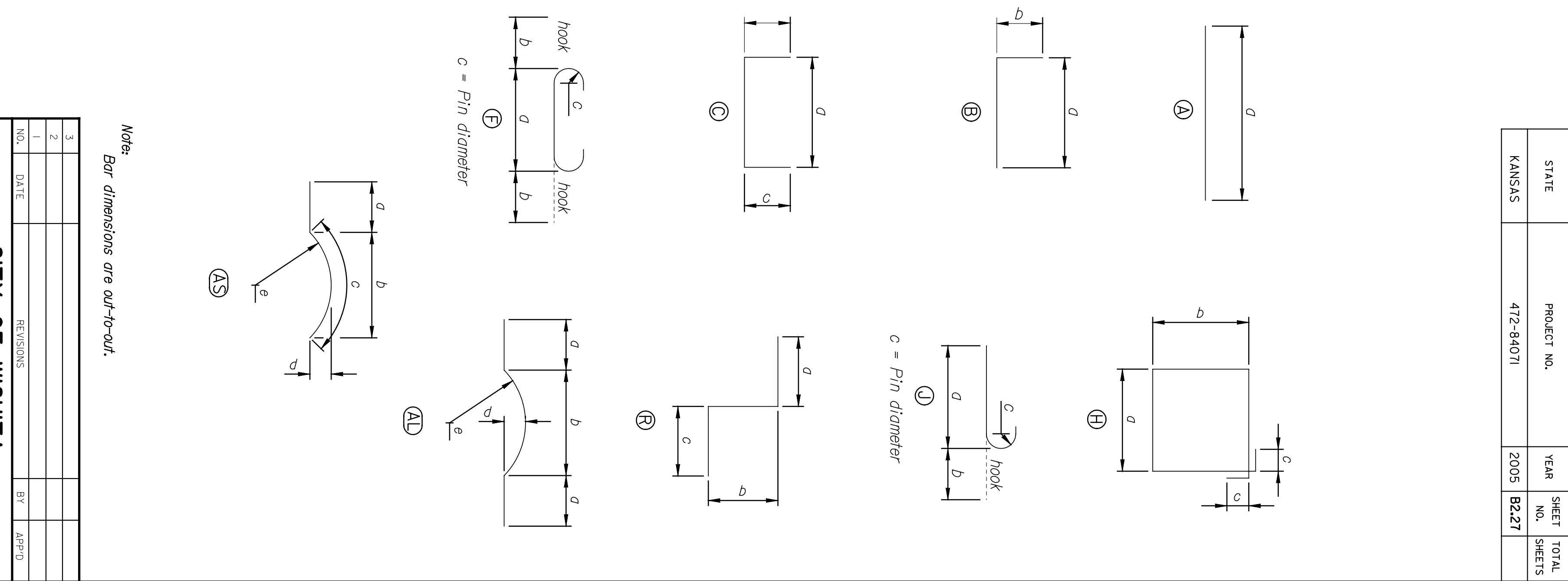


DATE	BY

Plotted on: 04-JAN-2005 13:04  
 Plot Queue: #queue#  
 Plot Scale: #scale# Pen Table: #pentables#  
 Design Filename: k:\b29049\BridgesDec2004\Base Bld\13thStreet\drawings\112.dgn

EPOXY COATED	DESIGN MARK	BENDING MARK	SIZE	NO.	LENGTH	DIMENSIONS					
						d	b	c	d	e	f
	5F01	C	5	333	4'-4"	3'-4"	6"	6"			
	6F01	A	6	30	48'-3"	48'-3"					
	6F03	A	6	12	2'-11"	2'-11"					
X	6F04	A	6	21	3'-0"	3'-0"					
	6F05	A	6	1	1'-0"	1'-0"					
	6F08	A	6	14	7'-2"	7'-2"					
	6F09	A	6	45	3'-0"	3'-0"					
X	8F01	A	8	73	5'-0"	5'-0"					
	8F02	A	8	15	22'-2"	22'-2"					
	8F03	A	8	76	15'-8"	15'-8"					
	8F05	A	8	8	47'-6"	47'-6"					
	10F01	F	10	64	18'-6"	15'-8"	1'-5"	10 3/4"			
	10F02	J	10	81	22'-0"	20'-7"	1'-5"	10 3/4"			
	10F03	J	10	40	11'-11"	10'-6"	1'-5"	10 3/4"			
	10F04	F	10	14	25'-0"	22'-2"	1'-5"	10 3/4"			
	5F01	C	5	207	4'-4"	3'-4"	6"	6"			
	6F02	A	6	30	29'-2"	29'-2"					
	6F03	A	6	8	2'-11"	2'-11"					
X	6F04	A	6	21	3'-0"	3'-0"					
	6F08	A	6	14	7'-2"	7'-2"					
	6F09	A	6	45	3'-0"	3'-0"					
X	8F01	A	8	45	5'-0"	5'-0"					
	8F02	A	8	15	22'-2"	22'-2"					
	8F03	A	8	44	15'-8"	15'-8"					
	8F04	A	8	8	29'-0"	29'-0"					
	10F01	F	10	37	18'-6"	15'-8"	1'-5"	10 3/4"			
	10F02	J	10	49	22'-0"	20'-7"	1'-5"	10 3/4"			
	10F03	J	10	24	11'-11"	10'-6"	1'-5"	10 3/4"			
	10F04	F	10	14	25'-0"	22'-2"	1'-5"	10 3/4"			
<b>ABUTMENT NO. 2 WALL - PHASE 2</b>											
	4A01	C	4	5	5'-9"	3'-9"	1'-0"	1'-0"			
	4A02	C	4	4	7'-3"	5'-3"	1'-0"	1'-0"			
	4A03	C	4	2	6'-7"	4'-7"	1'-0"	1'-0"			
	4A04	C	4	6	5'-10"	3'-10"	1'-0"	1'-0"			
X	4A05	C	4	25	7'-2"	5'-2"	1'-0"	1'-0"			
	4A06	B	4	5	3'-2"	2'-2"	1'-0"	1'-0"			
	4A30	C	4	4	6'-0"	2'-8"	1'-8"	1'-8"			
	4A31	A	4	5	1'-10"	1'-10"					
	5A01	A	5	10	42'-9"	42'-9"					
	5A03	A	5	4	8'-3"	8'-3"					
	5A04	A	5	4	1'-8"	1'-8"					
	5A05	A	5	4	6'-8"	6'-8"					
X	5A06	AL	5	18	15'-0"	2'-10"	2'-10"	11 7/8"	10'-10 1/8"		
X	5A07	AL	5	36	15'-0"	2'-10"	2'-10"	11 7/8"	10'-10 1/8"		
	5A08	A	5	18	42'-9"	42'-9"					
X	5A09	AS	5	18	5'-4"	2'-10"	2'-4"	9 3/8"	10'-10 1/8"		
X	5A13	AL	5	30	19'-0"	4'-10"	4'-10"	11 7/8"	10'-10 1/8"		
X	5A14	A	5	3	7'-1"	6'-3"	10"				
	5A15	B	5	18	7'-1"	6'-3"	10"				
	5A16	A	5	4	12'-8"	12'-8"					
	5A17	A	5	1	7'-0"	7'-0"					
	5A30	C	5	5	5'-0"	5'-0"	10"				
	5A31	A	5	5	1'-10"	1'-11"	6"				

EPOXY COATED	DESIGN MARK	BENDING MARK	SIZE	NO.	LENGTH	DIMENSIONS					
						d	b	c	d	e	f
	5A32	B	5	10	5'-10"	5'-0"	10"				
	5A40	H	5	12	8'-8"	1'-11"	1'-11"				
	6A01	A	6	5	43'-3"	43'-3"					
	6A02	C	6	41	3'-2"	1'-2"	1'-0"				
	6A03	A	6	41	10'-4"	10'-4"					
	6A04	C	6	41	6'-8"	4'-8"	1'-0"				
X	6A05	A	6	37	16'-10"	16'-10"					
X	6A09	A	6	21	23'-6"	23'-6"					
X	6A10	A	6	45	23'-6"	23'-6"					
	6A11	A	6	21	6'-10"	6'-10"					
	6A12	A	6	15	4'-11"	2'-11"	1'-0"				
	6A32	C	6	6	7'-11"	7'-11"					
	6A33	A	6	18	7'-11"	7'-11"					
	8A01	A	8	41	10'-4"	10'-4"					
	8A02	B	8	23	7'-5"	6'-1"	1'-4"				
X	9A01	B	9	34	20'-3"	18'-8"	1'-7"				
X	9A02	R	9	34	17'-9"	1'-7"	3'-6"				
X	9A03	B	9	5	7'-3"	5'-8"	1'-7"				
	4A01	C	4	5	5'-9"	3'-9"	1'-0"				
	4A02	C	4	4	7'-3"	5'-3"	1'-0"				
	4A03	C	4	2	6'-7"	4'-7"	1'-0"				
	4A04	C	4	6	5'-10"	3'-10"	1'-0"				
X	4A05	C	4	25	7'-2"	5'-2"	1'-0"				
	4A06	B	4	5	3'-2"	2'-2"	1'-0"				
	4A30	C	4	4	6'-0"	2'-8"	1'-8"				
	4A31	A	4	5	1'-10"	1'-10"					
	5A03	A	5	4	8'-3"	8'-3"					
X	5A06	AL	5	18	15'-0"	2'-10"	2'-10"	11 7/8"	10'-10 1/8"		
X	5A10	AS	5	18	11'-11"	2'-10"	2'-10"	3 3/8"	10'-10 1/8"		
	5A11	A	5	10	24'-2"	24'-2"					
X	5A13	AL	5	30	19'-0"	4'-10"	4'-10"	11 7/8"	10'-10 1/8"		
	5A14	A	5	3	5'-8"	5'-8"					
	5A15	B	5	18	7'-1"	6'-3"	10"				
	5A16	A	5	4	12'-8"	12'-8"					
	5A17	A	5	1	7'-0"	7'-0"					
	5A30	B	5	10	3'-9"	2'-11"	10"				
	5A31	A	5	5	5'-0"	5'-0"					
	5A32	B	5	10	5'-10"	5'-0"	10"				
	5A40	H	5	12	8'-8"	1'-11"	1'-11"				
	6A02	C	6	25	3'-2"	1'-2"	1'-0"				
	6A03	A	6	25	10'-4"	10'-4"					
	6A04	C	6	25	6'-8"	4'-8"	1'-0"				
X	6A05	A	6	23	16'-10"	16'-10"					
	6A06	A	6	5	24'-2"	24'-2"					
X	6A09	A	6	21	23'-6"	23'-6"					
	6A10	A	6	45	23'-6"	23'-6"					
X	6A11	A	6	21	6'-10"	6'-10"					
	6A12	A	6	15	6'-10"	6'-10"					
	6A32	C	6	6	4'-11"	2'-11"	1'-0"				
	6A33	A	6	18	7'-11"	7'-11"					
	8A01	A	8	25	10'-4"	10'-4"					
	8A02	B	8	23	7'-5"	6'-1"	1'-4"				
X	9A01	B	9	34	20'-3"	18'-8"	1'-7"				
X	9A02	R	9	34	17'-9"	1'-7"	3'-6"				
X	9A03	B	9	5	7'-3"	5'-8"	1'-7"				



**PNTEB**  
 ARCHITECTS ENGINEERS PLANNERS

This sheet designed by:

**ABUTMENT NO. 2 WALL - PHASE 4**

**ABUTMENT NO. 2 WALL - PHASE 2 (CONT.)**

NO.	DATE	BY	APP'D.
1			
2			
3			

**CITY OF WICHITA**  
 13TH STREET  
 WICHITA CENTRAL CORRIDOR  
 ABUTMENT NO. 1 REINFORCING DETAILS

REVISIONS

DESIGNED: GAB  
 CHECKED: SALS  
 SCALE: AS NOTED  
 DATE: 01/04/05  
 DRAWN: DMH  
 TRACED: GAB  
 CHECKED: DMH

STATE	PROJECT NO.	YEAR	SHEET NO.	TOTAL SHEETS
KANSAS	472-84071	2005	B227	