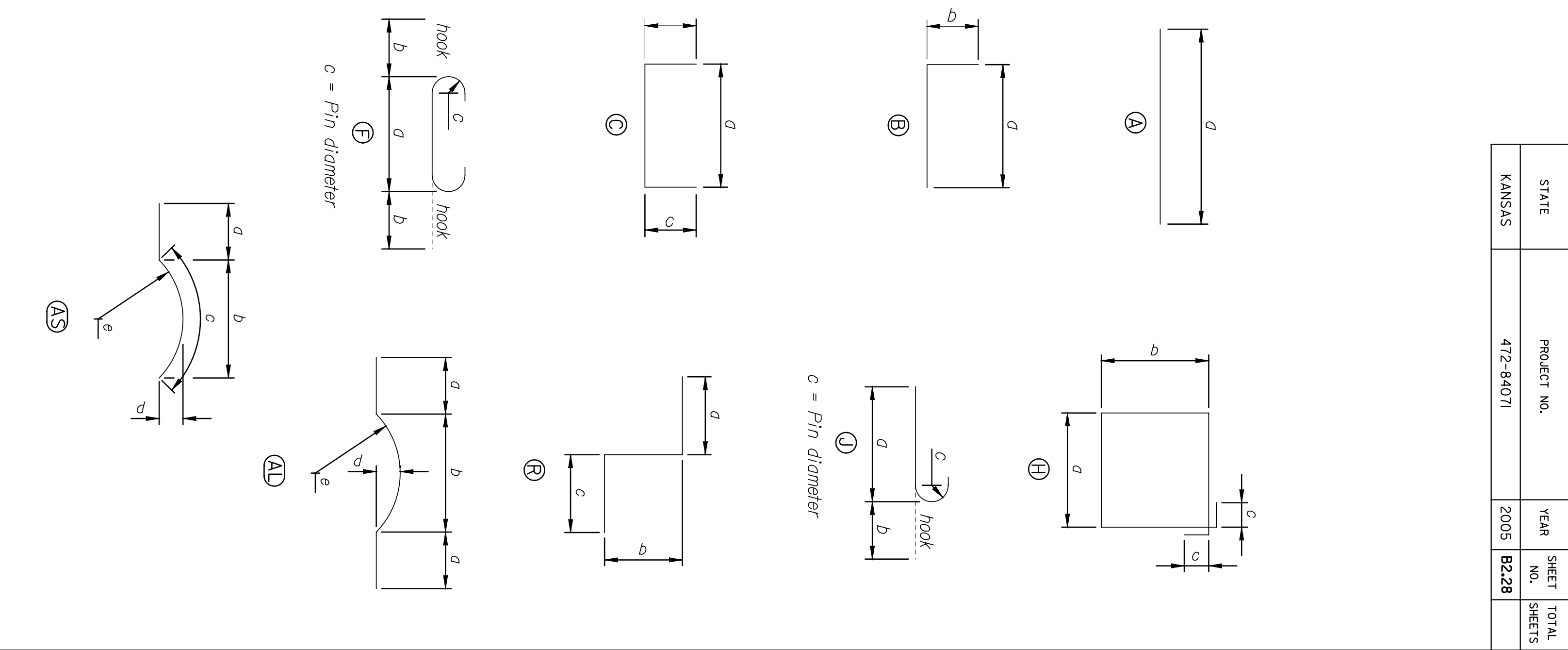


BY	DATE

EPOXY COATED	DESIGN MARK	BENDING MARK	SIZE	NO.	LENGTH	DIMENSIONS					
						d	b	c	d	e	f
	5F01	C	5	333	4'-4"	3'-4"	6"	6"			
	6F01	A	6	34	48'-3"	48'-3"					
	6F03	A	6	12	2'-11"	2'-11"					
X	6F04	A	6	20	3'-0"	3'-0"					
	6F05	A	6	1	1'-0"	1'-0"					
	6F08	B	6	2	8'-8"	5'-8"	3'-0"				
	6F09	A	6	19	3'-0"	3'-0"					
X	8F01	A	8	73	5'-0"	5'-0"					
	8F05	A	8	8	47'-6"	47'-6"					
	10F01	F	10	70	21'-0"	18'-2"	1'-5"	10 3/4"			
	10F05	J	10	21	11'-5"	10'-0"	1'-5"	10 3/4"			
	10F06	F	10	8	22'-0"	19'-2"	1'-5"	10 3/4"			
	11F01	J	11	81	22'-5"	20'-10"	1'-7"	1'-0"			
	11F02	J	11	40	13'-7"	12'-0"	1'-7"	1'-0"			
	11F03	A	11	79	18'-2"	18'-2"					
	11F04	A	11	12	19'-2"	19'-2"					
	5F01	C	5	207	4'-4"	3'-4"	6"	6"			
	6F02	A	6	34	29'-2"	29'-2"					
	6F03	A	6	8	2'-11"	2'-11"					
X	6F04	A	6	20	3'-0"	3'-0"					
	6F08	B	6	2	8'-8"	5'-8"	3'-0"				
	6F09	A	6	19	3'-0"	3'-0"					
X	8F01	A	8	45	5'-0"	5'-0"					
	8F04	A	8	8	29'-0"	29'-0"					
	10F01	F	10	43	21'-0"	18'-2"	1'-5"	10 3/4"			
	10F05	J	10	15	11'-5"	10'-0"	1'-5"	10 3/4"			
	10F06	F	10	8	22'-0"	19'-2"	1'-5"	10 3/4"			
	11F01	J	11	49	22'-5"	20'-10"	1'-7"	1'-0"			
	11F02	J	11	24	13'-7"	12'-0"	1'-7"	1'-0"			
	11F03	A	11	47	18'-2"	18'-2"					
	11F04	A	11	12	19'-2"	19'-2"					
	4A01	C	4	6	5'-9"	3'-9"	1'-0"	1'-0"			
	4A02	C	4	4	5'-1"	3'-1"	1'-0"	1'-0"			
	4A03	C	4	5	4'-4"	2'-4"	1'-0"	1'-0"			
X	4A04	C	4	30	5'-8"	3'-8"	1'-0"	1'-0"			
	4A30	C	4	4	6'-0"	3'-8"	1'-8"	1'-8"			
	4A31	A	4	5	1'-10"	1'-10"					
	5A01	A	5	10	42'-9"	42'-9"					
	5A03	A	5	4	8'-3"	8'-3"					
	5A04	A	5	4	1'-8"	1'-8"					
	5A05	A	5	4	6'-8"	6'-8"					
X	5A06	AL	5	18	15'-0"	2'-10"	2'-10"	11 7/8"	10'-10 1/8"		
X	5A07	AL	5	36	15'-0"	2'-10"	2'-10"	11 7/8"	10'-10 1/8"		
	5A08	A	5	18	42'-9"	42'-9"					
	5A09	AS	5	18	5'-4"	2'-10"	2'-4"	9 3/8"	10'-10 1/8"		
X	5A13	AL	5	30	16'-0"	3'-4"	3'-4"	11 7/8"	10'-10 1/8"		
	5A14	A	5	3	15'-8"	15'-8"					
X	5A15	B	5	18	7'-1"	6'-3"	10"				
	5A16	A	5	2	5'-7"	5'-7"					
X	5A30	B	5	10	3'-9"	2'-11"	10"				

EPOXY COATED	DESIGN MARK	BENDING MARK	SIZE	NO.	LENGTH	DIMENSIONS					
						d	b	c	d	e	f
	5A31	A	5	5	5'-0"	5'-0"					
	5A32	B	5	10	5'-10"	5'-0"	10"				
	6A01	A	6	5	43'-3"	43'-3"					
	6A02	C	6	41	3'-2"	1'-2"	1'-0"	1'-0"			
	6A04	C	6	41	6'-8"	4'-8"	1'-0"	1'-0"			
X	6A05	A	6	37	17'-0"	17'-0"					
	6A07	A	6	41	10'-2"	10'-2"					
X	6A09	A	6	20	28'-3"	28'-3"					
	6A10	A	6	19	28'-3"	28'-3"					
	6A32	C	6	6	4'-11"	2'-11"	1'-0"	1'-0"			
	6A33	A	6	18	7'-11"	7'-11"					
	8A01	A	8	41	10'-2"	10'-2"					
	8A02	B	8	23	7'-5"	6'-1"	1'-4"				
X	9A01	B	9	39	17'-3"	15'-8"	1'-7"				



This sheet designed by:



ARCHITECTS ENGINEERS PLANNERS

LOCATION: RANSF BRG 201A	SCALE: AS NOTED
DESIGNED: GAB	SCALE: AS NOTED
DRAWN: SALS	SCALE: AS NOTED
CHECKED: GAB	SCALE: AS NOTED
APPROVED: GAB	SCALE: AS NOTED

REVISIONS		BY	APP'D
NO.	DATE		
1			
2			
3			

CITY OF WICHITA  
 13TH STREET  
 ABUTMENT NO. 2 REINFORCING DETAILS

STATE: KANSAS	PROJECT NO.: 472-84071	YEAR: 2005	SHEET NO.: B228	TOTAL SHEETS: 2
---------------	------------------------	------------	-----------------	-----------------