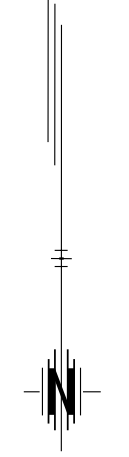
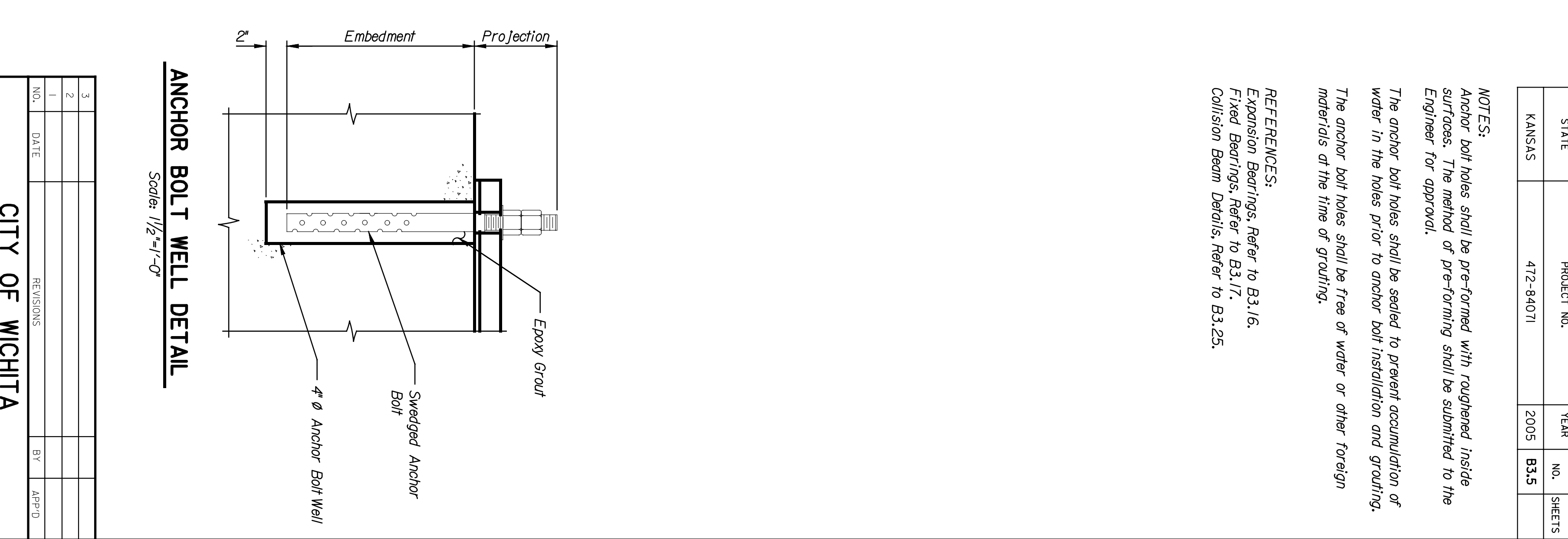
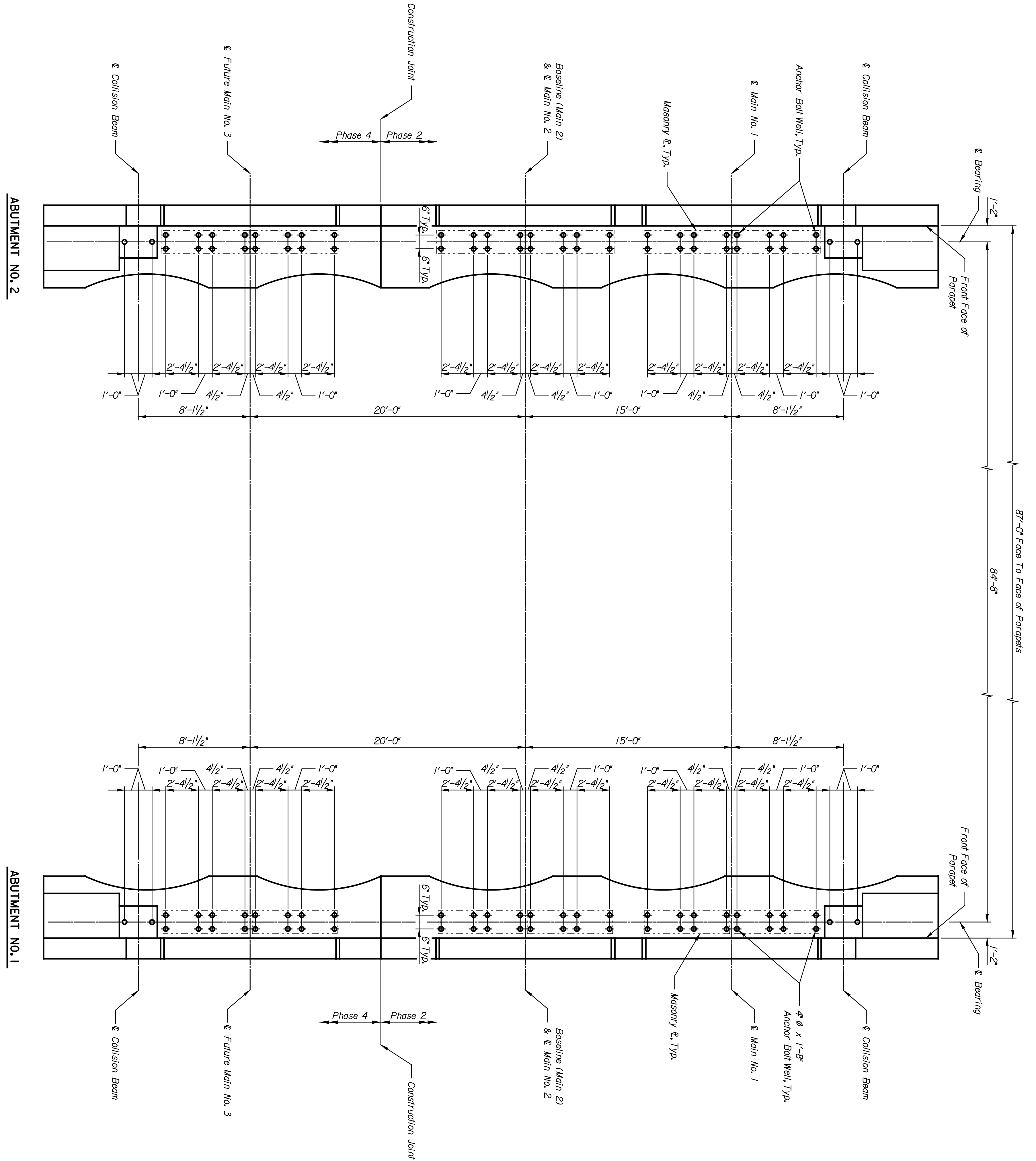


	BY	DATE



HNTEB
 ARCHITECTS ENGINEERS PLANNERS

This sheet designed by:



NOTES:
 Anchor bolt holes shall be pre-formed with roughened inside surfaces. The method of pre-forming shall be submitted to the Engineer for approval.
 The anchor bolt holes shall be sealed to prevent accumulation of water in the holes prior to anchor bolt installation and grouting.
 The anchor bolt holes shall be free of water or other foreign materials at the time of grouting.

REFERENCES:
 Expansion Bearings, Refer to B3.16.
 Fixed Bearings, Refer to B3.17.
 Collision Beam Details, Refer to B3.25.

STATE	PROJECT NO.	YEAR	SHEET NO.	TOTAL SHEETS
KANSAS	472-84071	2005	B3.5	

LOCATION: RNSF BR 2115 WICHITA, KS

LINE SEGMENT: 7400

SHEET NO.	OF	SCALE	AS NOTED	APP'D.
DESIGNED	GAP	DETAILED	QUANTITIES	DRAWN
DESIGN CR.	SAS	DETAIL CR.	SMITH	QUANCKEN

CITY OF WICHITA
MURDOCK
ANCHOR BOLT LAYOUT

NO.	DATE	REVISIONS	BY	APP'D.
3				
2				
1				

ANCHOR BOLT LAYOUT
 Scale: 1/4" = 1'-0"

ABUTMENT NO. 2

ABUTMENT NO. 1

ANCHOR BOLT WELL DETAIL
 Scale: 1/2" = 1'-0"