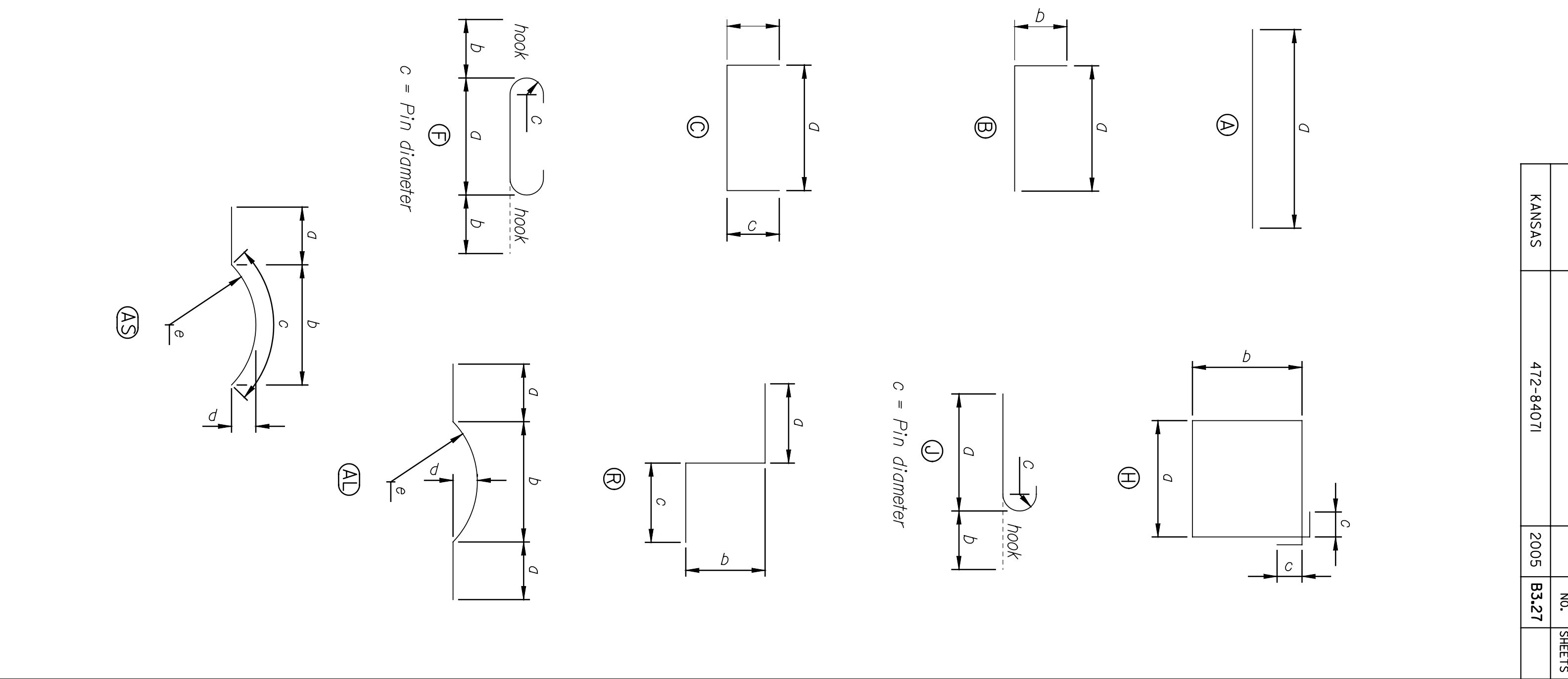


BY	DATE

EPOXY COATED	DESIGN MARK	BENDING MARK	SIZE	NO.	LENGTH	DIMENSIONS					
						d	b	c	d	e	f
	5F01	C	5	333	4'-4"	3'-4"	6"	6"			
	6F01	A	6	16	47'-11"	47'-11"					
	6F03	A	6	12	2'-11"	2'-11"					
X	6F04	A	6	38	3'-0"	3'-0"					
	6F05	A	6	1	1'-0"	1'-0"					
	6F06	J	6	19	48'-7"	47'-11"	8"	21/4"			
	6F08	B	6	2	8'-2"	5'-8"	2'-6"				
	6F10	A	6	19	3'-0"	3'-0"					
X	8F01	A	8	73	5'-0"	5'-0"					
	8F05	A	8	8	47'-6"	47'-6"					
	10F02	F	10	70	21'-6"	18'-8"	1'-5"	10 3/4"			
	10F03	F	10	8	22'-0"	19'-2"	1'-5"	10 3/4"			
	11F01	A	11	79	18'-8"	18'-8"					
	11F02	A	11	12	19'-2"	19'-2"					
	11F03	J	11	81	22'-1"	20'-6"	1'-7"	1'-0"			
	11F04	J	11	40	13'-1"	11'-6"	1'-7"	1'-0"			
	5F01	C	5	207	4'-4"	3'-4"	6"	6"			
	6F02	A	6	35	29'-2"	29'-2"					
	6F03	A	6	8	2'-11"	2'-11"					
X	6F04	A	6	20	3'-0"	3'-0"					
	6F08	B	6	2	8'-2"	5'-8"	2'-6"				
	6F10	A	6	19	3'-0"	3'-0"					
X	8F01	A	8	45	5'-0"	5'-0"					
	8F04	A	8	8	29'-0"	29'-0"					
	10F02	F	10	43	21'-6"	18'-8"	1'-5"	10 3/4"			
	10F03	F	10	8	22'-0"	19'-2"	1'-5"	10 3/4"			
	11F01	A	11	47	18'-8"	18'-8"					
	11F02	A	11	12	19'-2"	19'-2"					
	11F03	J	11	49	22'-1"	20'-6"	1'-7"	1'-0"			
	11F04	J	11	24	13'-1"	11'-6"	1'-7"	1'-0"			
	4A01	C	4	6	5'-9"	3'-9"	1'-0"	1'-0"			
	4A02	C	4	4	5'-1"	3'-1"	1'-0"	1'-0"			
	4A03	C	4	5	4'-4"	2'-4"	1'-0"	1'-0"			
X	4A04	C	4	31	5'-8"	3'-8"	1'-0"	1'-0"			
	4A30	C	4	4	5'-8"	2'-8"	1'-6"	1'-6"			
	4A31	A	4	5	1'-10"	1'-10"					
	5A01	A	5	14	42'-9"	42'-9"					
	5A03	A	5	4	8'-3"	8'-3"					
	5A04	A	5	4	1'-8"	1'-8"					
	5A05	A	5	4	6'-8"	6'-8"					
X	5A06	AL	5	18	15'-0"	2'-10"	9'-0 1/8"	2'-10"	10'-10 1/8"		
X	5A07	AL	5	36	15'-0"	2'-10"	9'-0 1/8"	2'-10"	10'-10 1/8"		
	5A08	A	5	18	42'-9"	42'-9"					
X	5A09	AS	5	18	5'-4"	2'-10"	2'-4"	2'-6"	9 3/8"	10'-10 1/8"	
X	5A13	AL	5	31	16'-0"	3'-4"	9'-0 1/8"	3'-4"	10'-10 1/8"		
	5A14	A	5	3	15'-8"	15'-8"					
X	5A15	B	5	18	7'-1"	6'-3"	10"				
	5A16	A	5	2	5'-7"	5'-7"					
	5A30	A	5	12	3'-9"	2'-11"	10"				

EPOXY COATED	DESIGN MARK	BENDING MARK	SIZE	NO.	LENGTH	DIMENSIONS					
						d	b	c	d	e	f
	5A31	A	5	5	5'-0"	5'-0"					
	5A32	B	5	12	5'-10"	5'-0"	10"				
	6A01	A	6	5	43'-3"	43'-3"					
	6A02	C	6	41	3'-2"	1'-2"	1'-0"	1'-0"			
	6A03	A	6	41	10'-10"	10'-10"					
	6A04	C	6	41	6'-8"	4'-8"	1'-0"	1'-0"			
X	6A05	A	6	37	16'-9"	16'-9"					
	6A09	A	6	20	29'-3"	29'-3"					
	6A10	A	6	19	29'-3"	29'-3"					
	6A32	C	6	6	4'-11"	2'-11"	1'-0"	1'-0"			
	6A33	A	6	18	9'-0"	9'-0"					
	8A01	A	8	41	10'-10"	10'-10"					
	8A02	B	8	25	7'-5"	6'-1"	1'-4"				
X	9A01	B	9	40	17'-3"	15'-8"	1'-7"				
	4A01	C	4	6	5'-9"	3'-9"	1'-0"	1'-0"			
	4A02	C	4	4	5'-1"	3'-1"	1'-0"	1'-0"			
	4A03	C	4	5	4'-4"	2'-4"	1'-0"	1'-0"			
X	4A04	C	4	31	5'-8"	3'-8"	1'-0"	1'-0"			
	4A30	C	4	4	5'-8"	2'-8"	1'-6"	1'-6"			
	4A31	A	4	5	1'-10"	1'-10"					
	5A03	A	5	4	8'-3"	8'-3"					
X	5A06	AL	5	18	15'-0"	2'-10"	9'-0 1/8"	2'-10"	10'-10 1/8"		
X	5A10	AS	5	18	11'-11"	2'-10"	8'-9 1/2"	9'-0 1/8"	10'-10 1/8"		
	5A11	A	5	14	24'-2"	24'-2"					
	5A12	A	5	18	24'-2"	24'-2"					
X	5A13	AL	5	31	16'-0"	3'-4"	9'-0 1/8"	3'-4"	11 7/8"	10'-10 1/8"	
	5A14	A	5	3	15'-8"	15'-8"					
	5A15	B	5	5	7'-1"	6'-3"	10"				
	5A16	A	5	2	5'-7"	5'-7"					
	5A30	A	5	6	2'-11"	2'-11"					
	5A31	A	5	5	5'-0"	5'-0"					
	6A02	C	6	25	3'-2"	1'-2"	1'-0"	1'-0"			
	6A03	A	6	25	10'-10"	10'-10"					
	6A04	C	6	25	6'-8"	4'-8"	1'-0"	1'-0"			
X	6A05	A	6	23	16'-9"	16'-9"					
	6A06	A	6	5	24'-2"	24'-2"					
X	6A09	A	6	20	29'-3"	29'-3"					
	6A10	A	6	19	29'-3"	29'-3"					
	6A32	C	6	6	4'-0"	2'-10"	7"	7"			
	6A33	A	6	18	6'-8"	6'-8"					
	8A01	A	8	25	10'-10"	10'-10"					
	8A02	B	8	25	7'-5"	6'-1"	1'-4"				
X	9A01	B	9	40	17'-3"	15'-8"	1'-7"				



Note:  
 Bar dimensions are out-to-out.

This sheet designed by:  
**PNTE**  
 ARCHITECTS ENGINEERS PLANNERS

DESIGNED BY: GAB	SCALE: OF	APPROVED BY: DMH
DRAWN BY: SJS	DATE: 01/04/05	TRACED BY: DMH
CHECKED BY: EDI	QUANTITIES BY: DMH	DATE: 01/04/05
DESIGN GR. BY: SJS	DETAIL GR. BY: EDI	DATE: 01/04/05

CITY OF WICHITA	
MURDOCK	
ABUTMENT NO. 2 REINFORCING DETAILS	
NO.	REVISIONS
1	
2	
3	

STATE: KANSAS	PROJECT NO.: 472-84071	YEAR: 2005	SHEET NO.: B327	TOTAL SHEETS: 3
---------------	------------------------	------------	-----------------	-----------------