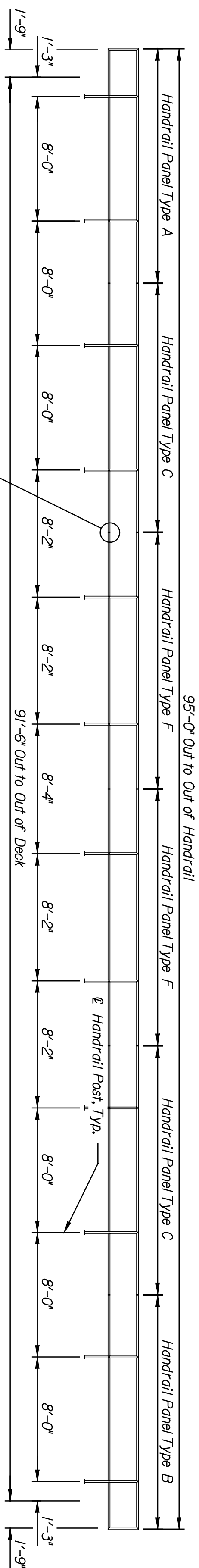
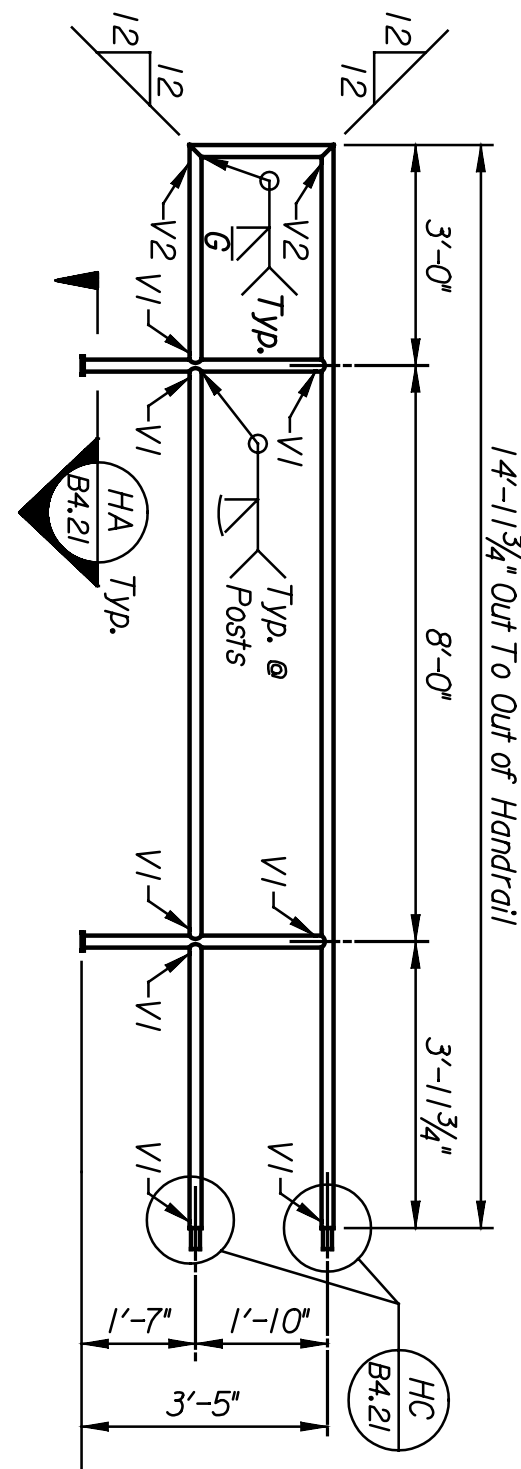


DATE	BY

Plotted on: 04-JAN-2005 13:14
 Plot Queue: #queue#
 Plot Scale: #scale# Pen Table: #pentables
 Design Filename: k:\b29049\brldgesDec2004\Base Bld\Central\drawings\c20.dgn

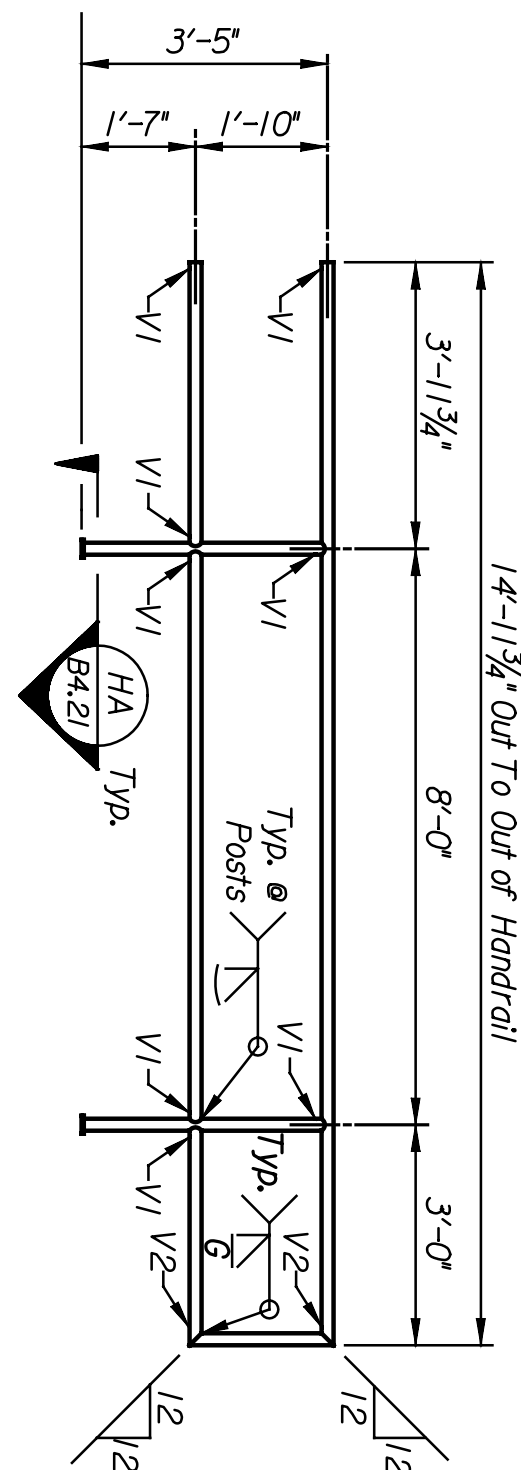


HANDRAIL ELEVATION (Type 2)
 Scale: 3/16" = 1'-0"



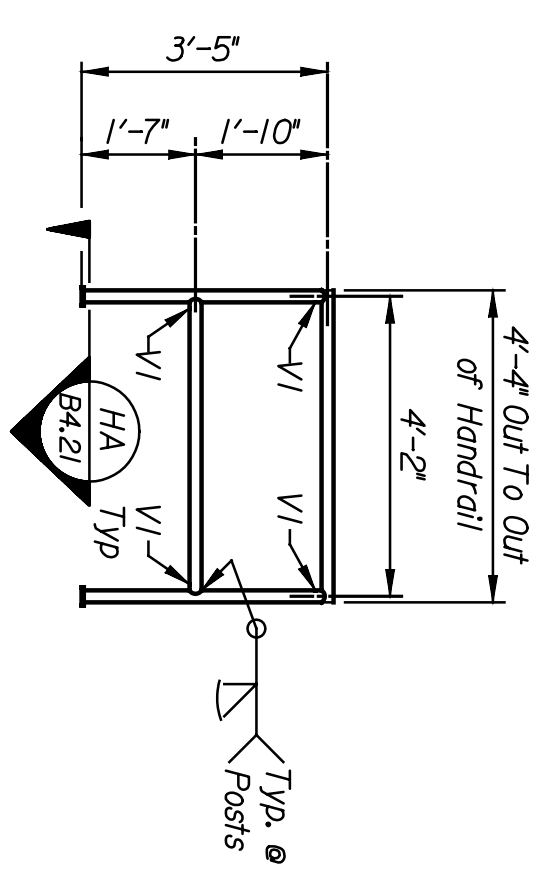
HANDRAIL PANEL TYPE A

No. Required = 1
 Weight = 105 Lbs. Each
 Handrail Panels are to be fabricated using
 1/2" Dia. std. Black Pipe.
 (Galvanize after fabrication)
 Scale: 3/8" = 1'-0"



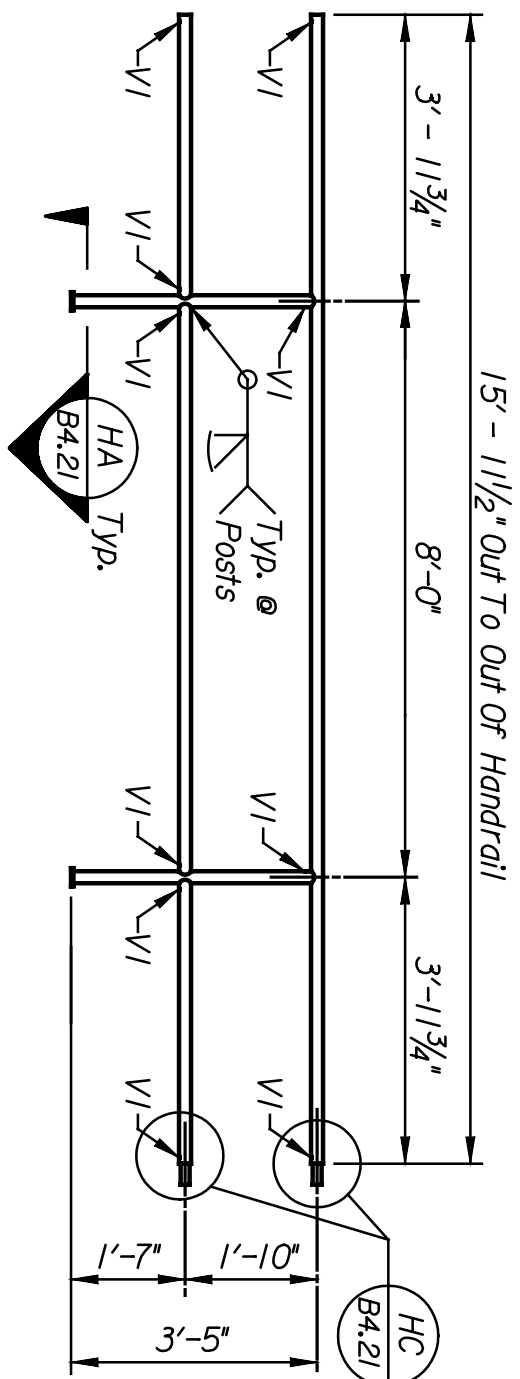
HANDRAIL PANEL TYPE B

No. Required = 1
 Weight = 105 Lbs. Each
 Handrail Panels are to be fabricated using
 1/2" Dia. std. Black Pipe.
 (Galvanize after fabrication)
 Scale: 3/8" = 1'-0"



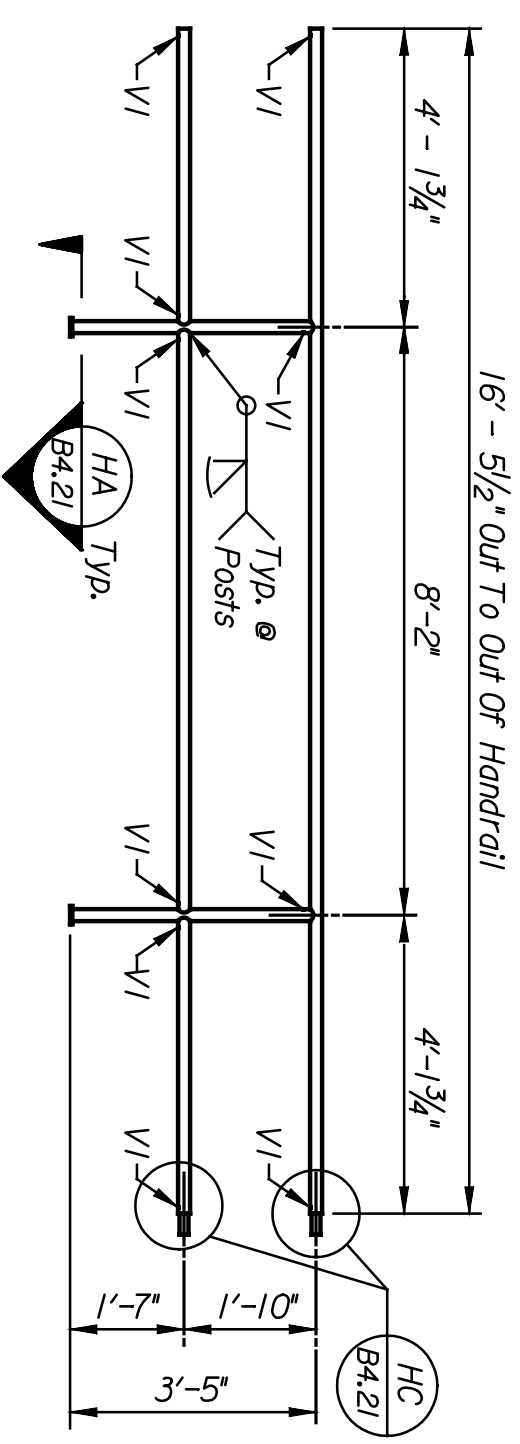
HANDRAIL PANEL (Type 2A)

No. Required = 4
 Weight = 41 Lbs. Each
 Handrail Panels are to be fabricated using
 1/2" Dia. std. Black Pipe.
 (Galvanize after fabrication)
 Scale: 3/8" = 1'-0"



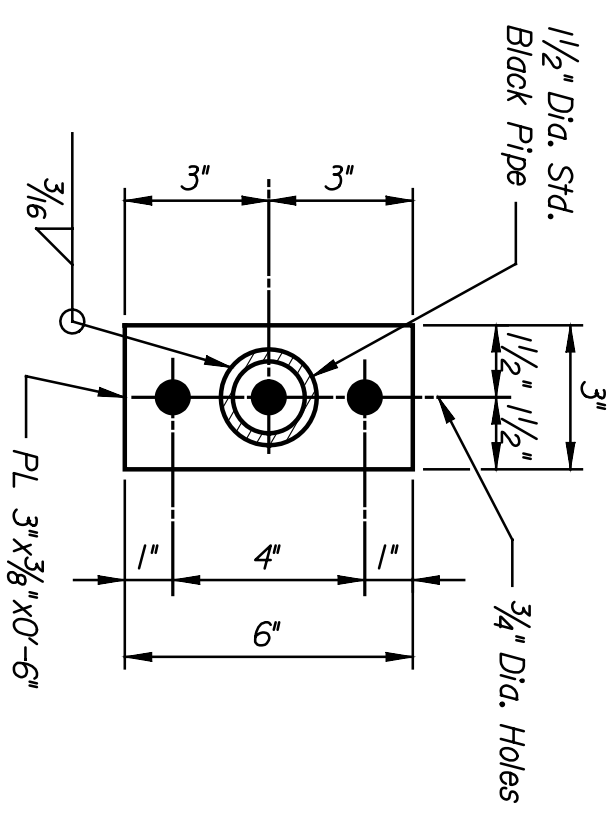
HANDRAIL PANEL TYPE C

No. Required = 2
 Weight = 106 Lbs. Each
 Handrail Panels are to be fabricated using
 1/2" Dia. std. Black Pipe.
 (Galvanize after fabrication)
 Scale: 3/8" = 1'-0"



HANDRAIL PANEL TYPE F

No. Required = 2
 Weight = 108 Lbs. Each
 Handrail Panels are to be fabricated using
 1/2" Dia. std. Black Pipe.
 (Galvanize after fabrication)

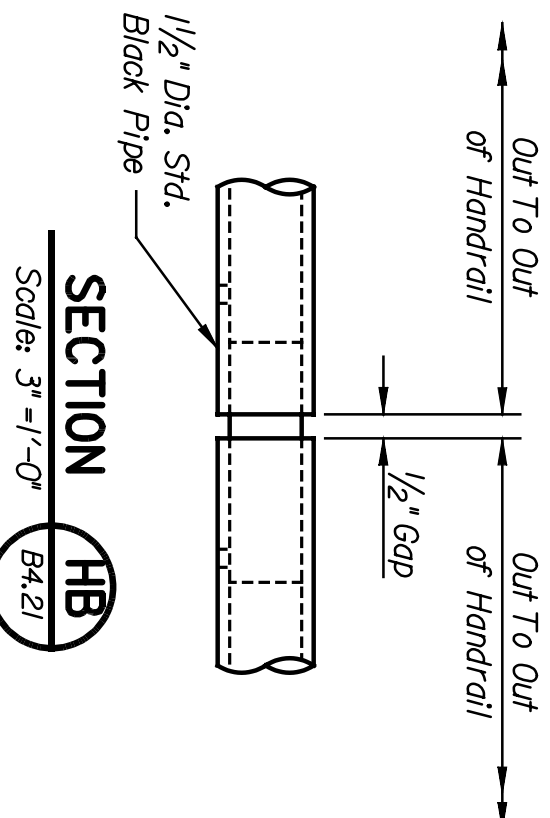


SECTION HA
 Scale: 3" = 1'-0"

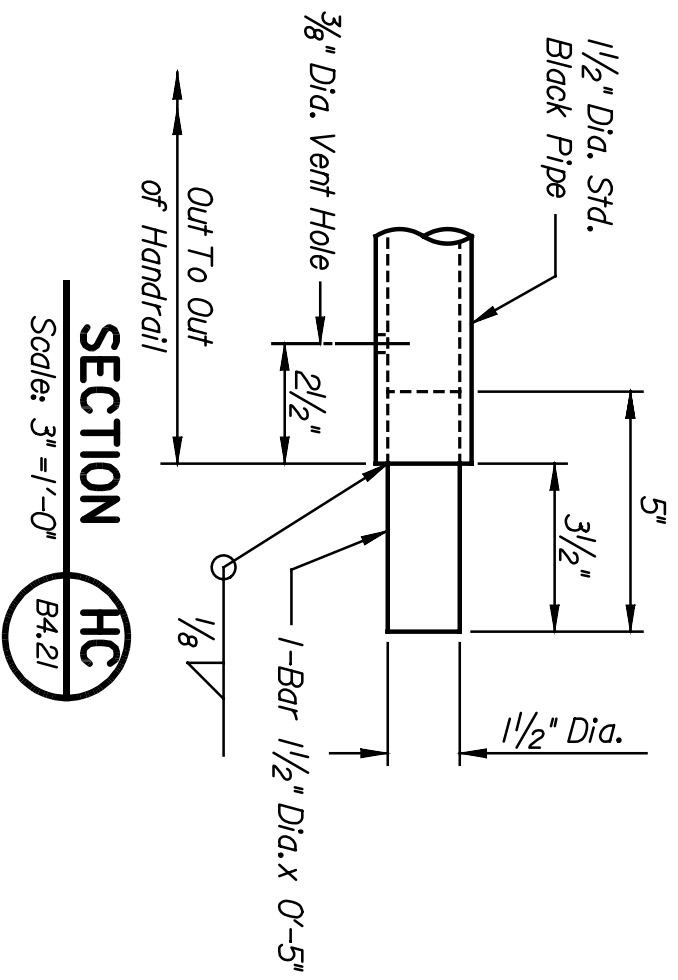
This sheet designed by:



ARCHITECTS ENGINEERS PLANNERS



SECTION HB
 Scale: 3" = 1'-0"



SECTION HC
 Scale: 3" = 1'-0"

STATE	PROJECT NO.	YEAR	SHEET NO.	TOTAL SHEETS
KANSAS	472-84071	2005	B4.21	

NOTES:
 Welding shall conform to the AREMA Manual for Railway Engineering and the Bridge Welding Code AWS D1.5M/D1.5. All weld metal shall be equivalent to the base metal in strength, corrosion resistance and painted appearance.
 All pipe welds shall be made with the MIG process.
 All steel pipes shall be uncoated and conform to ASTM A53. All structural steel shall conform to ASTM A36 or A709, Gr. 50. Concrete anchors for Handrail Type 2A shall be approved by the Engineer.
 Handrails, hardware and appurtenances shall be galvanized in accordance with ASTM A123 or A153 after fabrication.
 After galvanizing, all elements shall be free of fins, abrasions, rough or sharp edges and other surface defects.

LOCATION: RMSF BR 218	SCALE AS NOTED	APPD.	DESIGNED BY: KJH	DATE	QUANTITIES	DRAWN BY: DWH	TRACED BY: DWH	DUL																				
CITY OF WICHITA																												
WICHITA CENTRAL CORRIDOR																												
CENTRAL																												
BRIDGE HANDRAIL (TYPE 2, 2A)																												
<table border="1"> <thead> <tr> <th>NO.</th> <th>DATE</th> <th>REVISIONS</th> <th>BY</th> <th>APPD.</th> </tr> </thead> <tbody> <tr> <td>3</td> <td></td> <td></td> <td></td> <td></td> </tr> <tr> <td>2</td> <td></td> <td></td> <td></td> <td></td> </tr> <tr> <td>1</td> <td></td> <td></td> <td></td> <td></td> </tr> </tbody> </table>									NO.	DATE	REVISIONS	BY	APPD.	3					2					1				
NO.	DATE	REVISIONS	BY	APPD.																								
3																												
2																												
1																												