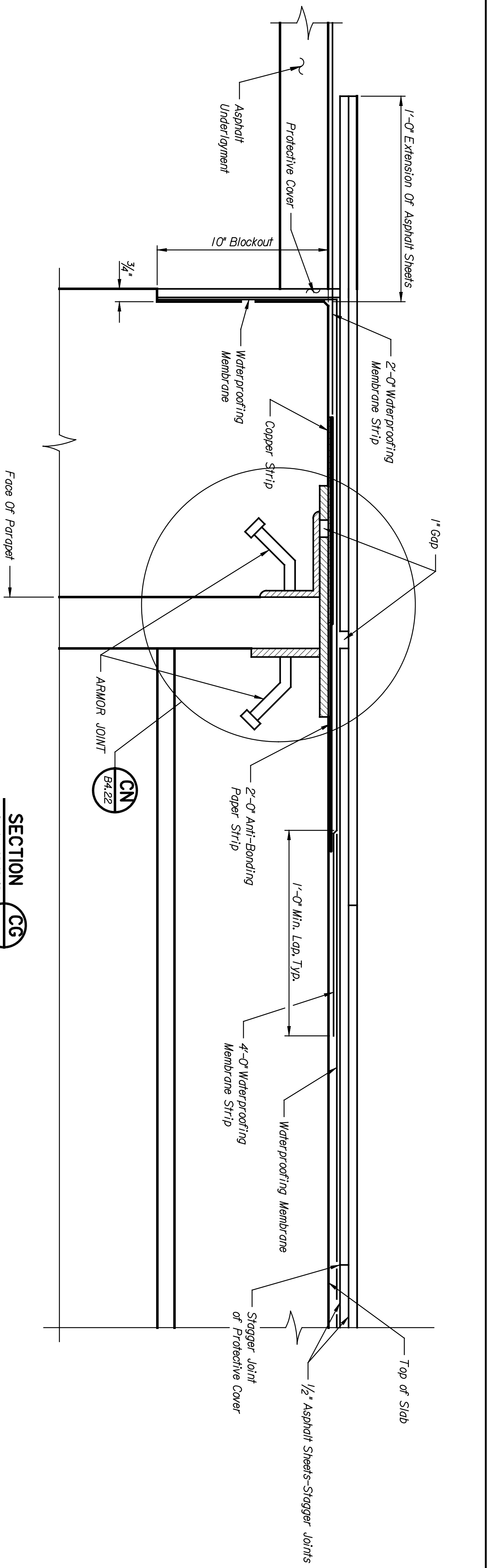
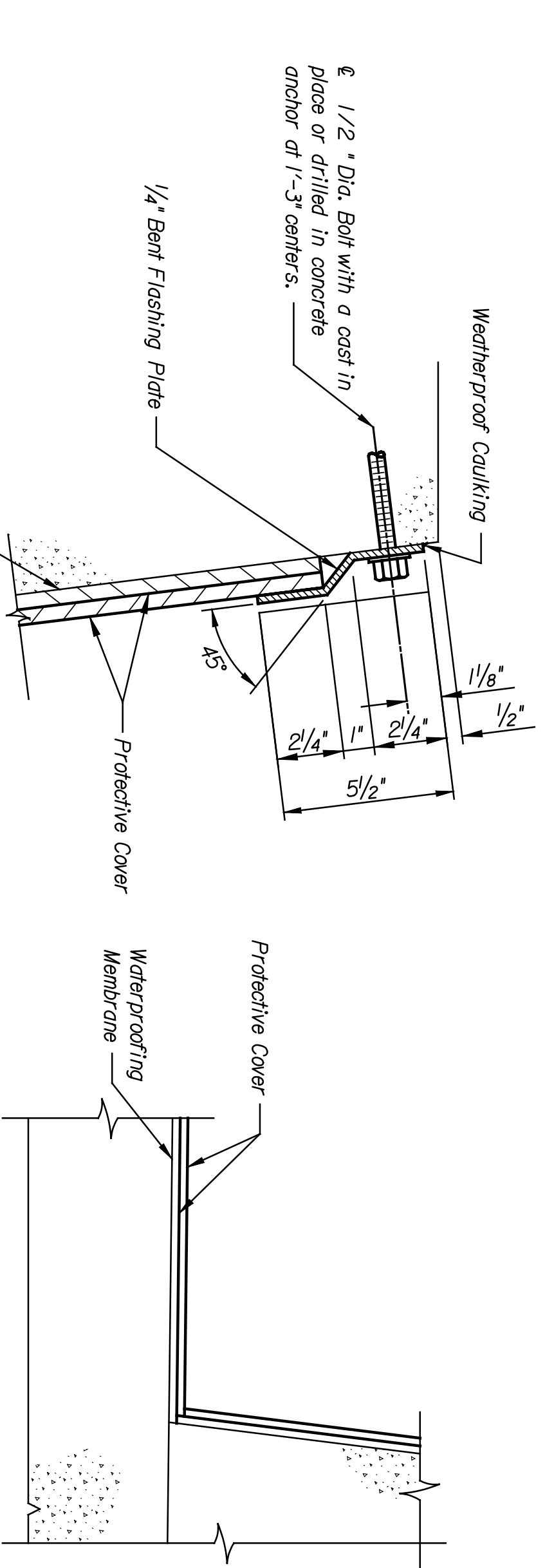
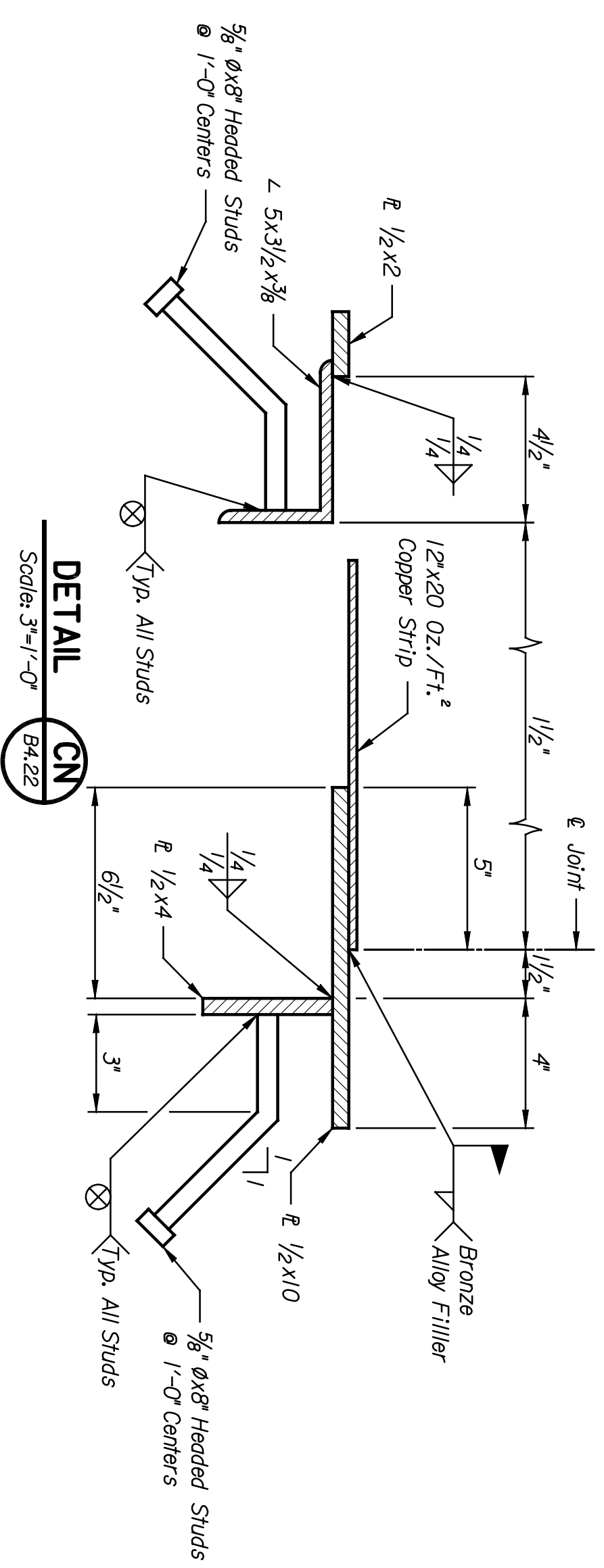


DATE	BY

Plotted on: 04-JAN-2005 13:14 \*time\$  
 djmlison Plot Queue: #queue\$  
 Plot Scale: #scale\$ Pen Table: #pentables\$  
 Design Filename: k:\b29049\brldgesDec2004\Base Bld\Central\drawings\c22.dgn.



**SECTION CG**  
 Scale: 3/8"=1'-0"  
 B4.7  
 B4.10  
 B4.18



**DETAIL CH**  
 Not To Scale  
 B4.19

**DETAIL CJ**  
 Not To Scale  
 B4.19

This sheet designed by:

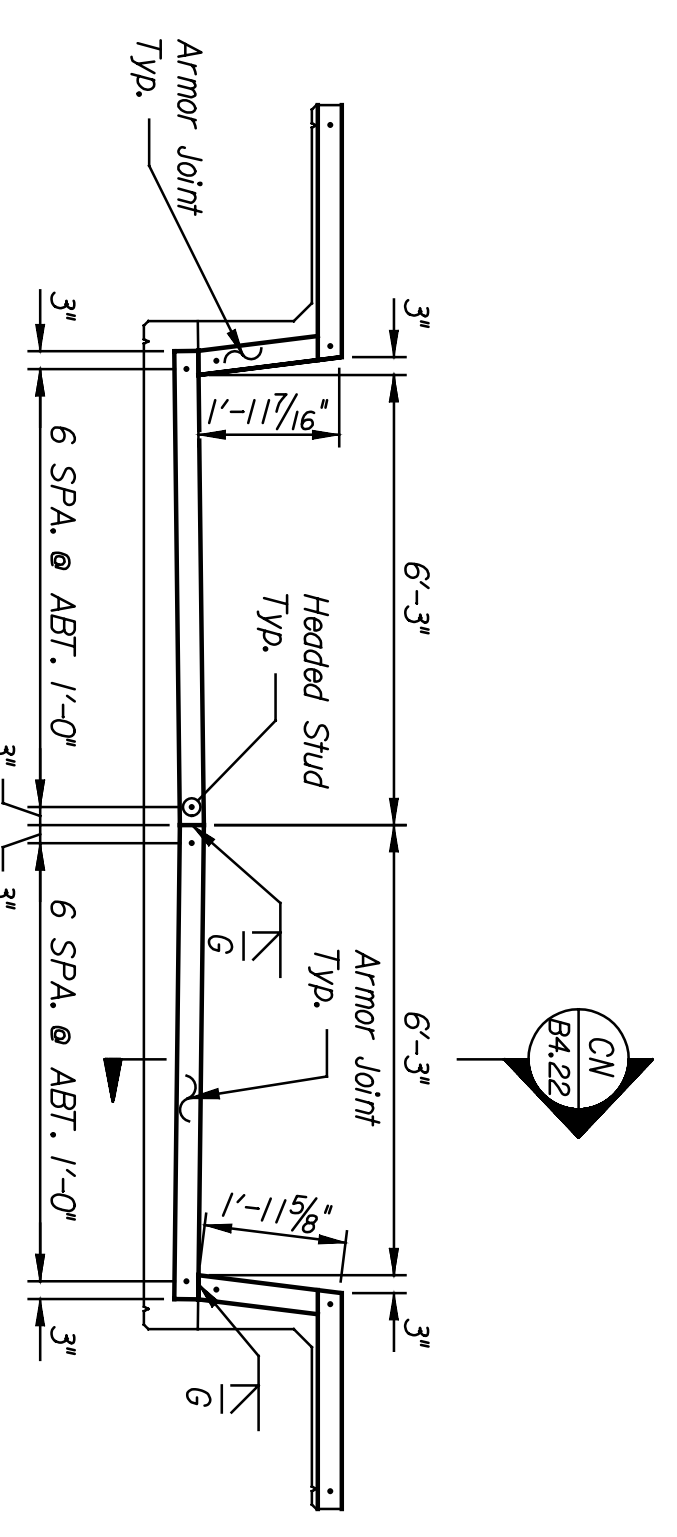


ARCHITECTS ENGINEERS PLANNERS

STATE	PROJECT NO.	YEAR	TOTAL SHEETS
KANSAS	472-84071	2005	B4.22

**NOTES:**

Waterproofing materials, accessories and construction shall conform to the requirements of the AEMA Manual of Railway Engineering, Chapter 29-Waterproofing, unless noted otherwise.  
 Waterproofing shall consist of 0.060-inch thick elastomeric sheets of butyl (IIR) or ethylene propylene diene terpolymer (EPDM), or a 0.100-inch thick cold, spray-applied waterproofing membrane.  
 A protective cover placed over the waterproofing membrane shall consist of two layers of asphalt planks or asphaltic panels conforming to and placed in accordance with the specifications.  
 Anti-bonding paper shall be impervious to bituminous materials and have a minimum mass of 5 lbs per 100 SF (0.25kg/m<sup>2</sup>).  
 Concrete anchors for flashing plates shall be stainless steel, cast-in-place or drilled anchors.  
 Flashing plates shall conform to ASTM A36, ASTM A709, Gr. 36 or better and shall be hot-dipped galvanized, in accordance with ASTM A123, after fabrication.  
 Copper sheet or strip shall conform to ASTM B370.  
 Armor joint plates and angles shall conform to ASTM A36, ASTM A709 Gr. 36 or better and shall be hot-dipped galvanized in accordance with ASTM A123 after fabrication.



**ARMOR JOINT DETAIL/ELEVATION**  
 Scale: 3/8"=1'-0"  
 B4.22

NO.	DATE	REVISIONS	BY	APP'D.
3				
2				
1				

CITY OF WICHITA  
 CENTRAL CORRIDOR  
 WATERPROOFING & DRAINAGE DETAILS

LOCATION:	WICHITA, KS
DESIGNER:	PMSF BR. 2118
SCALE:	AS NOTED
DESIGNED BY:	END
DRAWN BY:	DWH
CHECKED BY:	JWH
DATE:	
APPROVED BY:	