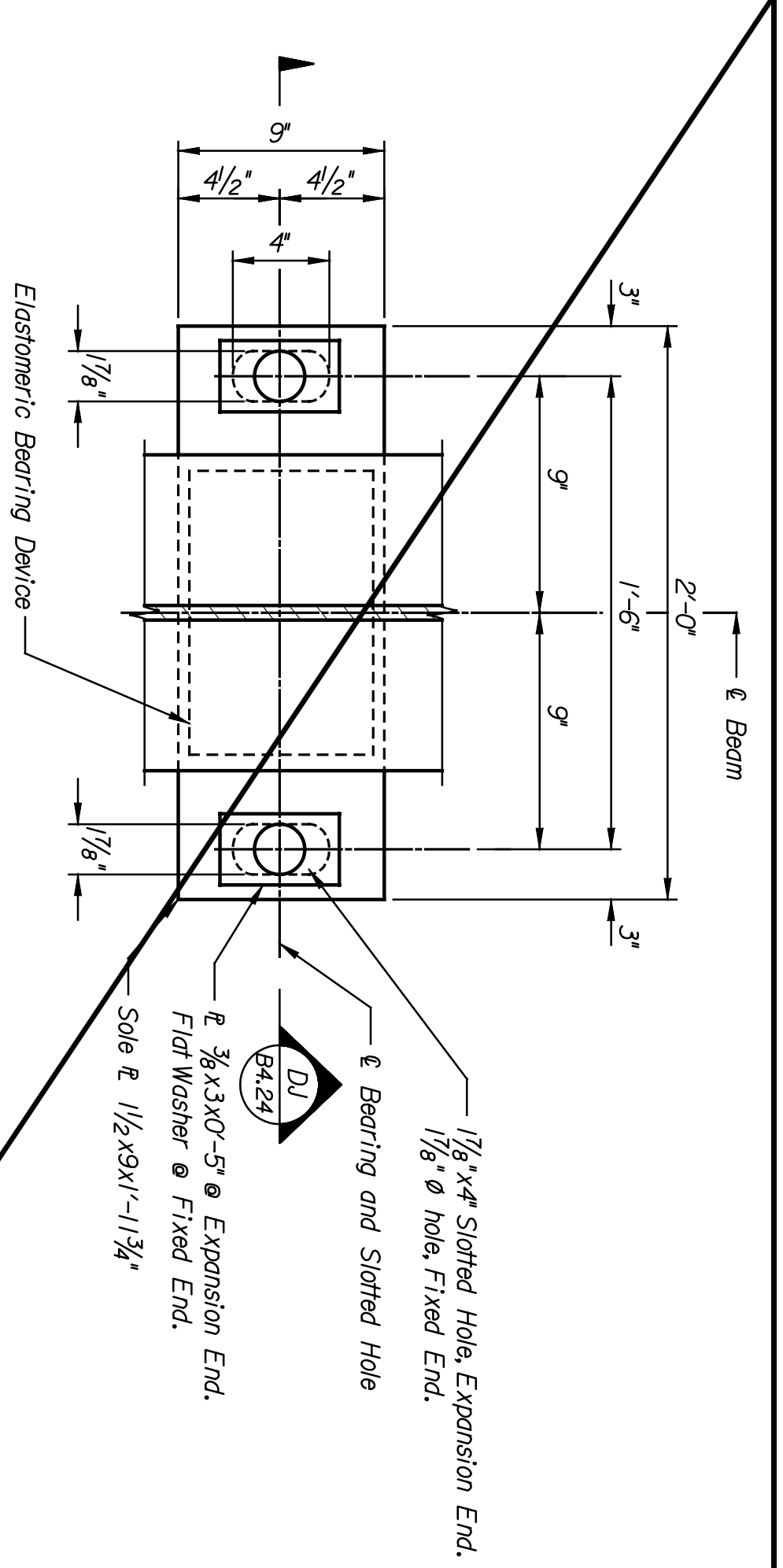
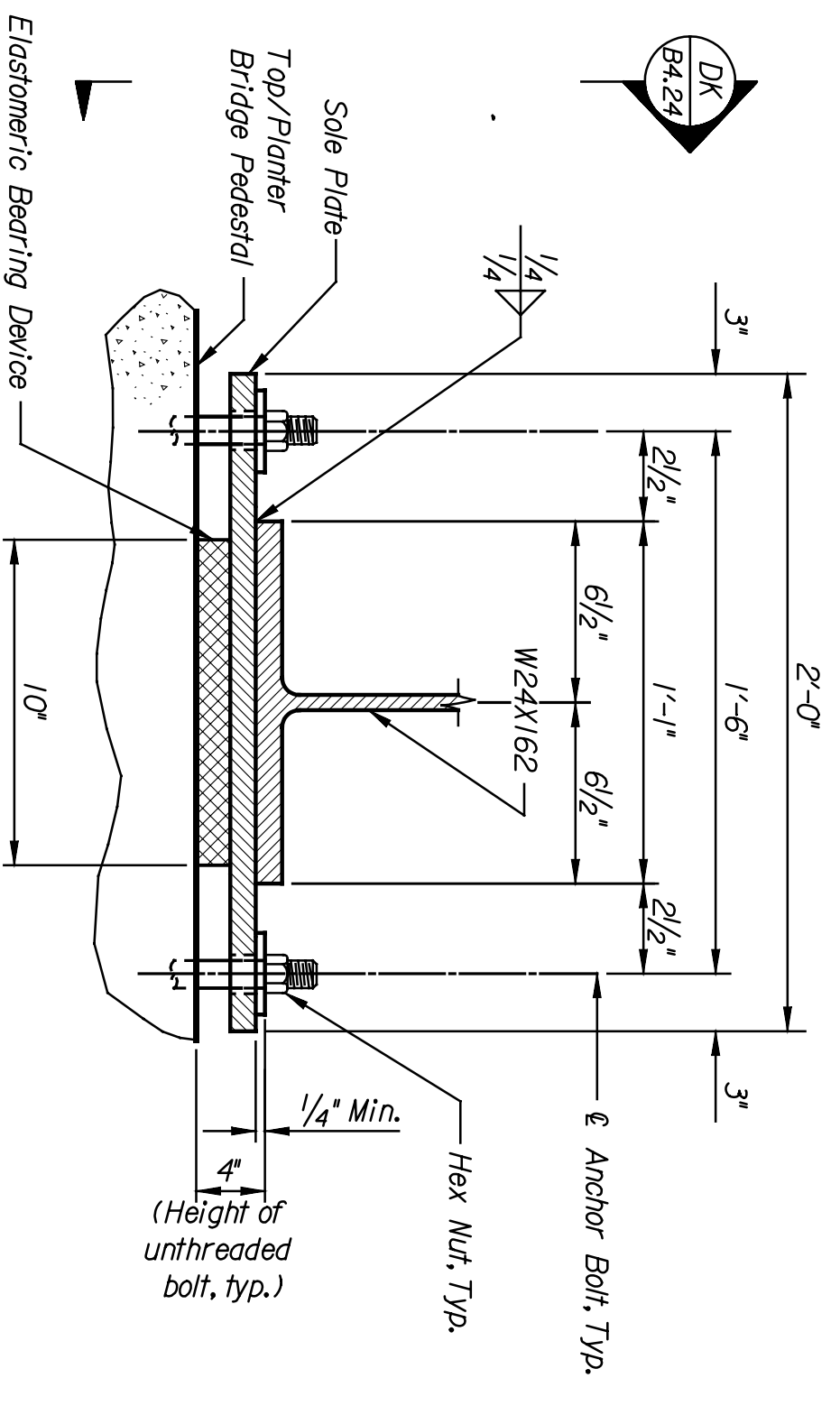


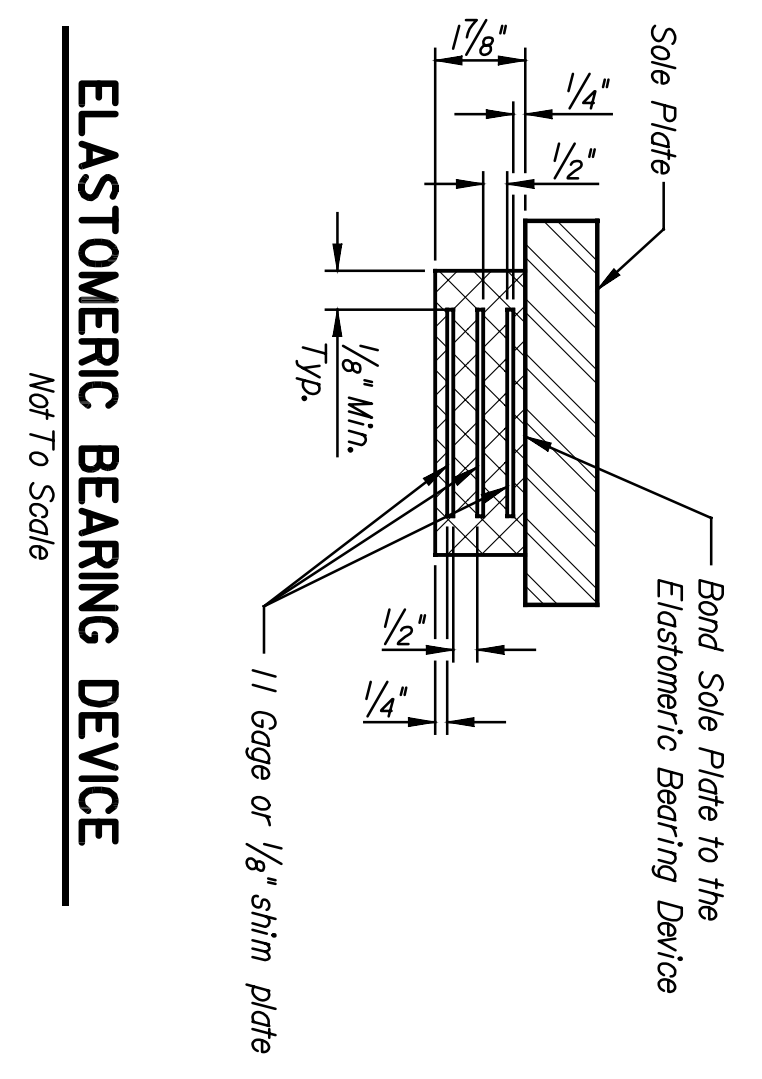
BY	DATE



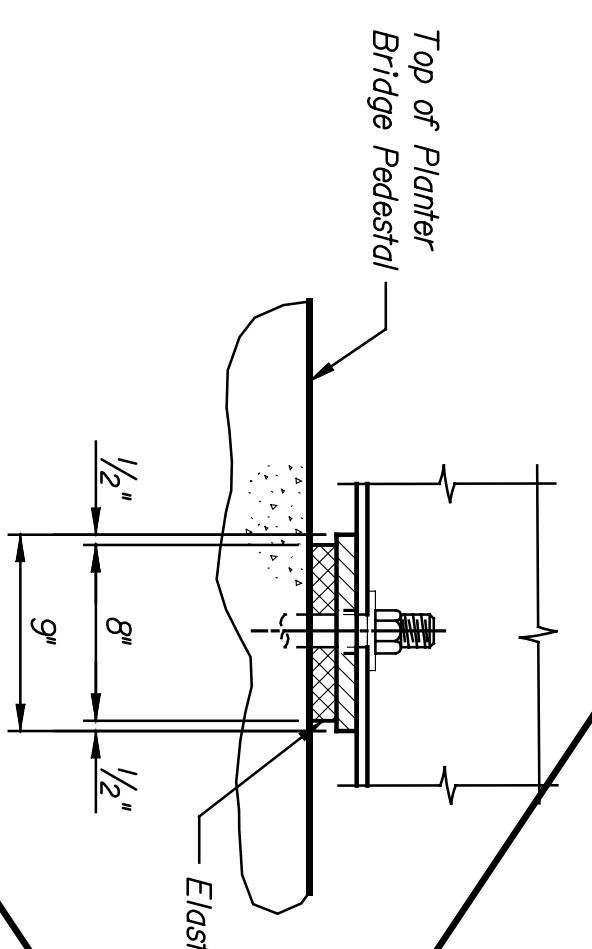
**SECTION DH**  
 Not To Scale  
 B4.23



**SECTION DK**  
 Not To Scale  
 B4.24

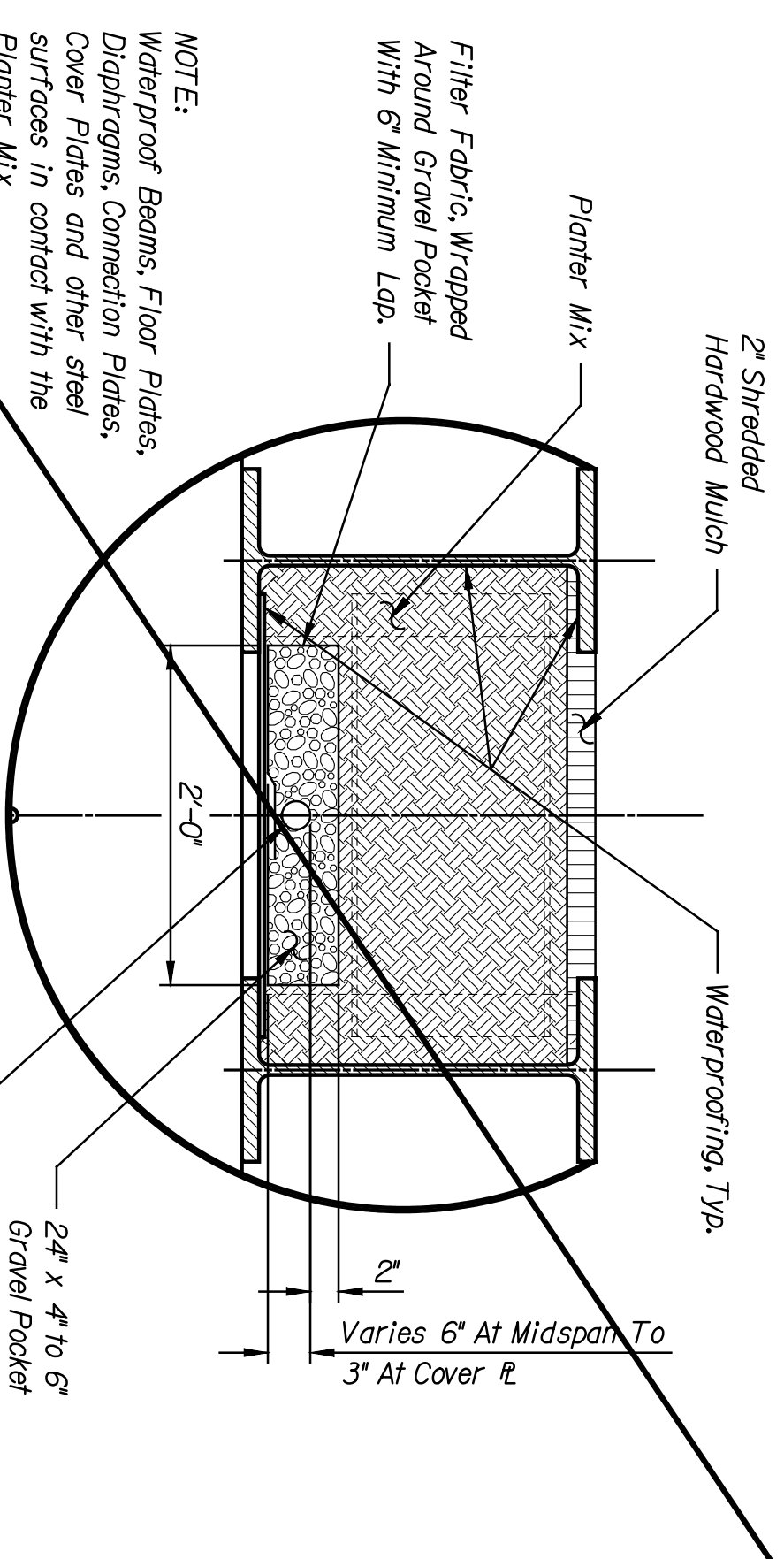


**ELASTOMERIC BEARING DEVICE**  
 Not To Scale

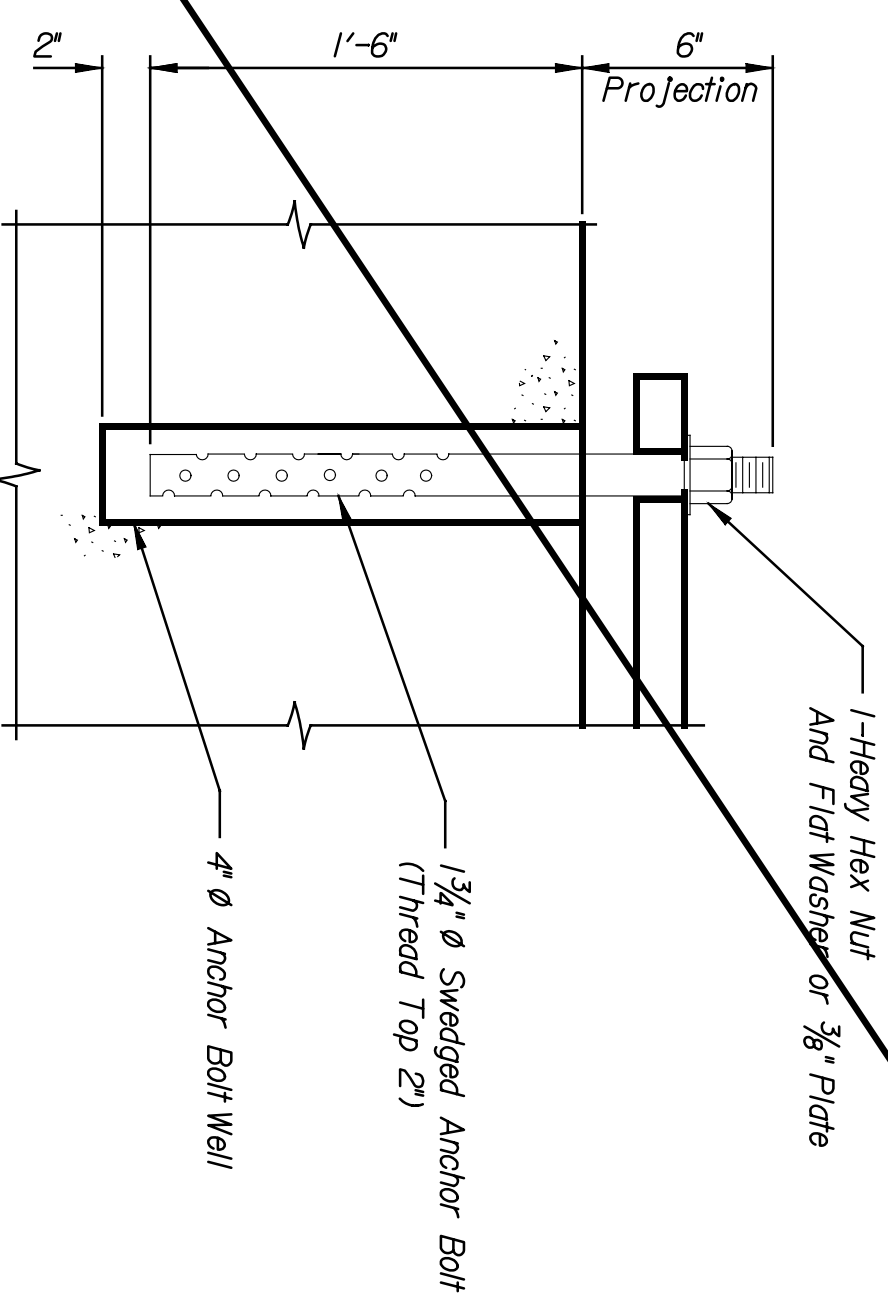


**SECTION BK**  
 Not To Scale  
 B4.24

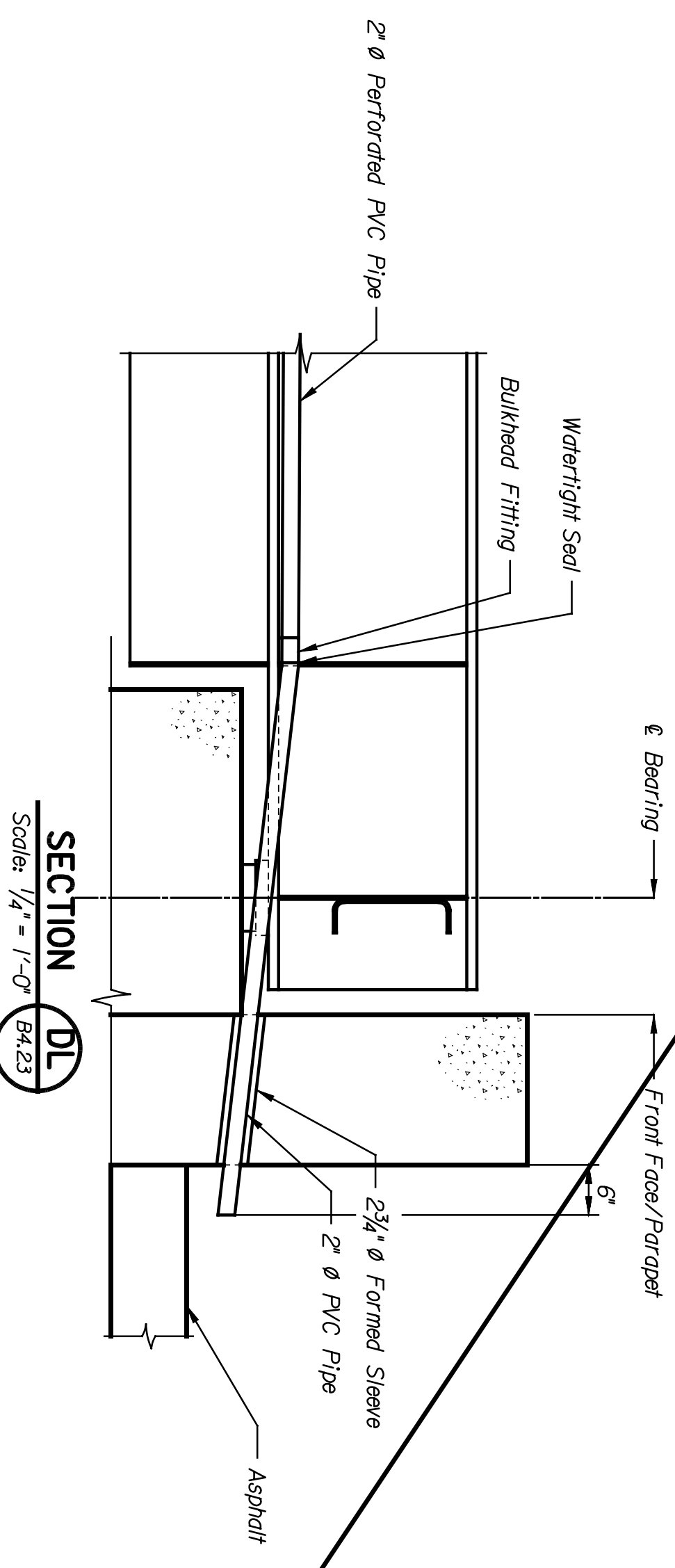
NOTE:  
 Waterproof Beams, Floor Plates, Diaphragms, Connection Plates, Cover Plates and other steel surfaces in contact with the Planter Mix.



**SECTION DG**  
 Scale: 1" = 1'-0"  
 B4.23



**ANCHOR BOLT WELL DETAIL**  
 Scale: 1 1/2" = 1'-0"



**SECTION DL**  
 Scale: 3/4" = 1'-0"  
 B4.23

Hardwood Mulch, Planter Mix, Filter Fabric, and Gravel Pocket Not Shown For Clarity.

STATE	PROJECT NO.	YEAR	SHEET NO.	TOTAL SHEETS
KANSAS	472-84071	2005	B4.24	

NOTES:  
 Anchor bolts for the expansion end shall be of the size shown and composed of steel conforming to ASTM F1554, Grade 105, Class 1A or 2A, with Supplementary Requirement S3, each with one rectangular plate washer of the size shown and one Heavy Hex Nut ASTM A563, Grade DH.  
 All holes for anchor bolts will be 3/8" larger than the nominal anchor bolt diameter, unless noted otherwise.  
 All holes through main structural members shall be drilled full-size or shall be sub-drilled 1/4" less than full diameter and reamed to full-size.  
 All washers shall be located under the turned element.  
 The materials, fabrication and installation of the Elastomeric Bearing Devices shall conform to the specifications.  
 The elastomeric bearing devices shall be bonded to the sole plate by vulcanization.  
 The waterproofing for the interior of the planter bridge shall consist of a 0.100-inch thick cold-spray-applied waterproofing membrane applied to all surfaces in contact with the planter mix, as indicated in the plans and specifications.  
 The underdrain for the planter bridge shall consist of a geocomposite drain, perforated and non-perforated PVC pipe, Schedule 40, with fittings and clean gravel fill conforming to the specifications.  
 The planter mix shall be as specified on the Planting Plans, Planting Details and Specifications.  
 Refer to Planter Bridge Details I for additional notes.

REFERENCES:  
 Anchor Bolt Layout, Refer to B4.5.  
 Irrigation Plan, Refer to L3.12.  
 Planting Plan, Refer to L2.12

**CH2B**  
 ARCHITECTS ENGINEERS PLANNERS

This sheet designed by:

LOCATION:	WICHITA, KS		
LINE SEGMENT:	7400		
SHEET NO.	05		
SCALE AS NOTED	APPD.		
DESIGNED BY	EDJ		
DETAILS BY	EDJ		
DESIGN CK.	DMH		
DETAIL CK.	EDJ		
QUANTITIES BY	DMH		
TRACED BY	DMH		
DATE			
REVISIONS			
NO.	DATE	BY	APPD.
1			
2			
3			

**CITY OF WICHITA**  
**CENTRAL CORRIDOR**  
**PLANTER BRIDGE DETAILS**