

BY	DATE

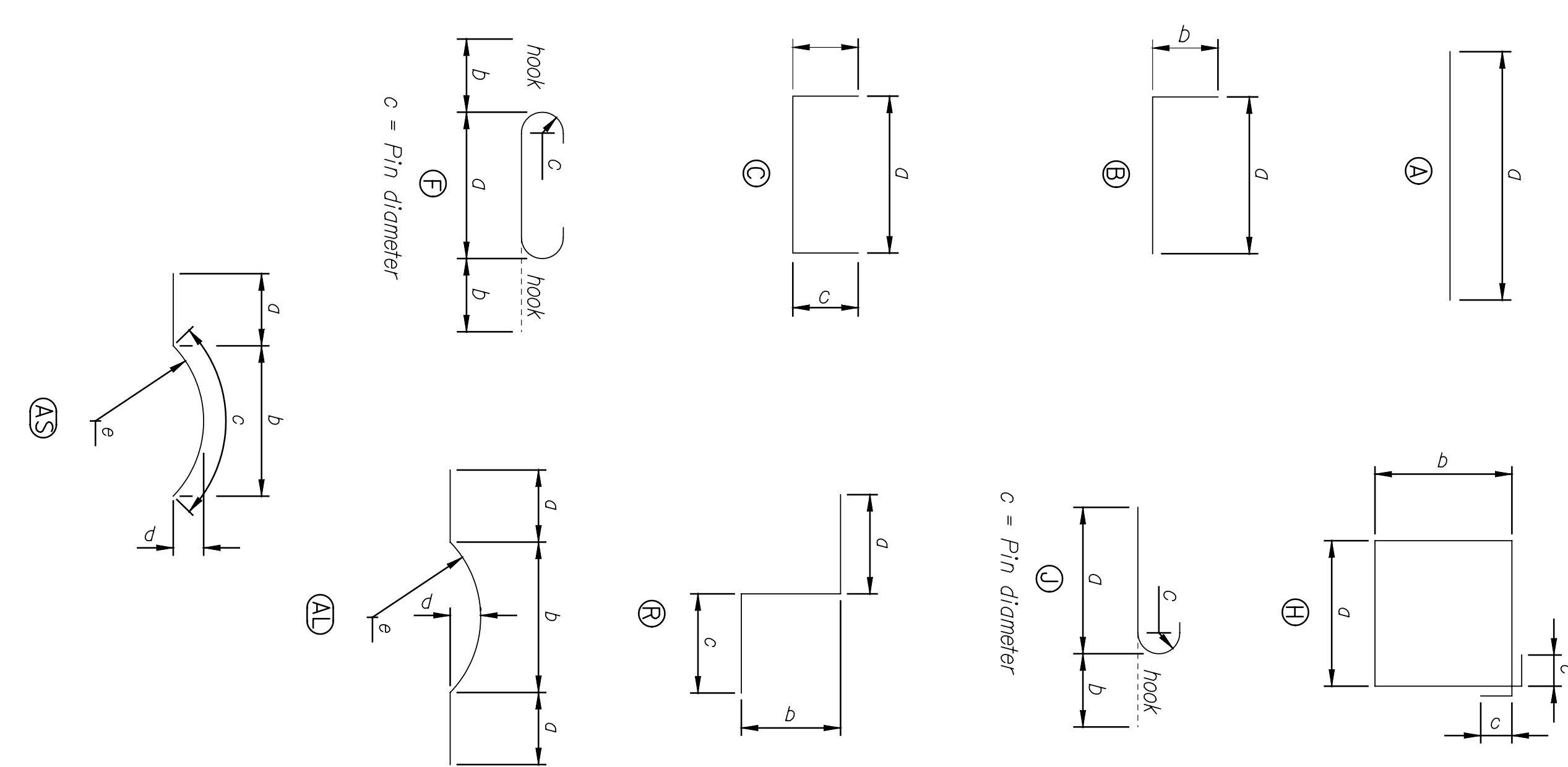
EPOXY COATED	DESIGN MARK	BENDING MARK	SIZE	NO.	LENGTH	DIMENSIONS						
						d	b	c	d	e	f	
	5F01	C	5	215	4'-4"	3'-4"	6"	6"				
	6F01	A	6	30	48'-3"	48'-3"						
	6F03	A	6	12	2'-11"	2'-11"						
X	6F04	A	6	20	3'-0"	3'-0"						
	6F05	A	6	1	1'-0"	1'-0"						
	6F08	B	6	2	10'-8"	5'-8"	5'-0"					
	6F09	A	6	4	5'-8"	5'-8"						
	6F10	A	6	19	3'-0"	3'-0"						
X	8F01	A	8	73	5'-0"	5'-0"						
	8F05	A	8	8	47'-6"	47'-6"						
	9F01	A	9	79	16'-2"	16'-2"						
	9F02	A	9	12	19'-2"	19'-2"						
	10F01	F	10	70	19'-0"	16'-2"	1'-5"	10 3/4"				
	10F02	J	10	81	22'-3"	20'-10"	1'-5"	10 3/4"				
	10F03	J	10	40	11'-11"	10'-6"	1'-5"	10 3/4"				
	10F04	F	10	8	22'-0"	19'-2"	1'-5"	10 3/4"				
	5F01	C	5	133	4'-4"	3'-4"	6"	6"				
	6F02	A	6	30	29'-2"	29'-2"						
	6F03	A	6	8	2'-11"	2'-11"						
X	6F04	A	6	20	3'-0"	3'-0"						
	6F08	B	6	2	10'-8"	5'-8"	5'-0"					
	6F09	A	6	4	5'-8"	5'-8"						
	6F10	A	6	19	3'-0"	3'-0"						
X	8F01	A	8	45	5'-0"	5'-0"						
	8F04	A	8	8	29'-0"	29'-0"						
	9F01	A	9	47	16'-2"	16'-2"						
	9F02	A	9	12	19'-2"	19'-2"						
	10F01	F	10	43	19'-0"	16'-2"	1'-5"	10 3/4"				
	10F02	J	10	49	22'-3"	20'-10"	1'-5"	10 3/4"				
	10F03	J	10	24	11'-11"	10'-6"	1'-5"	10 3/4"				
	10F04	F	10	8	22'-0"	19'-2"	1'-5"	10 3/4"				
	4A01	C	4	6	5'-9"	3'-9"	1'-0"	1'-0"				
	4A02	C	4	4	5'-1"	3'-1"	1'-0"	1'-0"				
	4A03	C	4	5	4'-4"	2'-4"	1'-0"	1'-0"				
X	4A04	C	4	31	5'-8"	3'-8"	1'-0"	1'-0"				
	4A30	C	4	4	5'-10"	2'-8"	1'-7"	1'-7"				
	4A31	A	4	5	1'-10"	1'-10"						
	5A01	A	5	14	42'-9"	42'-9"						
	5A03	A	5	4	8'-3"	8'-3"						
	5A04	A	5	4	1'-8"	1'-8"						
	5A05	A	5	4	6'-8"	6'-8"						
X	5A06	AL	5	18	15'-0"	2'-10"	11 7/8"	10'-10 1/8"				
X	5A07	AL	5	36	15'-0"	2'-10"	11 7/8"	10'-10 1/8"				
X	5A08	A	5	18	42'-9"	42'-9"						
X	5A09	AS	5	18	5'-4"	2'-10"	2'-4"	2'-6"	9 3/8"	10'-10 1/8"		
X	5A13	AL	5	31	16'-0"	3'-4"	9'-0 7/8"	3'-4"	11 7/8"	10'-10 1/8"		
	5A14	A	5	3	15'-8"	15'-8"						
X	5A15	B	5	18	7'-1"	6'-3"	10"					
	5A16	A	5	2	5'-7"	5'-7"						

EPOXY COATED	DESIGN MARK	BENDING MARK	SIZE	NO.	LENGTH	DIMENSIONS						
						d	b	c	d	e	f	
	5A30	B	5	12	3'-9"	2'-11"	10"					
	5A31	A	5	5	5'-0"	5'-0"						
	5A32	B	5	12	5'-10"	5'-0"	10"					
	6A01	A	6	5	43'-3"	43'-3"						
	6A02	C	6	41	3'-2"	1'-2"	1'-0"	1'-0"				
	6A03	A	6	122	10'-10"	10'-10"						
	6A04	C	6	41	6'-8"	4'-8"	1'-0"	1'-0"				
X	6A05	A	6	37	17'-1"	17'-1"						
X	6A09	A	6	20	29'-6"	29'-6"						
	6A10	A	6	19	29'-6"	29'-6"						
	6A32	C	6	6	4'-11"	2'-11"	1'-0"	1'-0"				
	6A33	A	6	18	9'-2"	9'-2"						
X	8A01	B	8	25	7'-5"	6'-1"	1'-4"					
	9A01	B	9	40	17'-3"	15'-8"	1'-7"					
	4A01	C	4	6	5'-9"	3'-9"	1'-0"	1'-0"				
	4A02	C	4	4	5'-1"	3'-1"	1'-0"	1'-0"				
	4A03	C	4	5	4'-4"	2'-4"	1'-0"	1'-0"				
X	4A04	C	4	31	5'-8"	3'-8"	1'-0"	1'-0"				
	4A30	C	4	4	5'-10"	2'-8"	1'-7"	1'-7"				
	4A31	A	4	5	1'-10"	1'-10"						
	5A03	A	5	4	8'-3"	8'-3"						
X	5A06	AL	5	18	15'-0"	2'-10"	9'-0 7/8"	2'-10"	11 7/8"	10'-10 1/8"		
X	5A10	AS	5	18	11'-11"	2'-10"	8'-9 1/2"	9'-0 3/8"	3 3/8"	10'-10 1/8"		
	5A11	A	5	14	24'-2"	24'-2"						
	5A12	A	5	18	24'-2"	24'-2"						
X	5A13	AL	5	31	16'-0"	3'-4"	9'-0 7/8"	3'-4"	11 7/8"	10'-10 1/8"		
	5A14	A	5	3	15'-8"	15'-8"						
X	5A15	B	5	18	7'-1"	6'-3"	10"					
	5A16	A	5	2	5'-7"	5'-7"						
	5A30	B	5	12	3'-9"	2'-11"	10"					
	5A31	A	5	5	5'-0"	5'-0"						
	5A32	B	5	12	5'-10"	5'-0"	10"					
	6A02	C	6	25	3'-2"	1'-2"	1'-0"	1'-0"				
	6A03	A	6	74	10'-10"	10'-10"						
	6A04	C	6	25	6'-8"	4'-8"	1'-0"	1'-0"				
X	6A05	A	6	23	17'-1"	17'-1"						
	6A06	A	6	5	24'-2"	24'-2"						
X	6A09	A	6	20	29'-6"	29'-6"						
	6A10	A	6	19	29'-6"	29'-6"						
	6A32	C	6	6	4'-11"	2'-11"	1'-0"	1'-0"				
	6A33	A	6	18	9'-2"	9'-2"						
X	8A01	B	8	25	7'-5"	6'-1"	1'-4"					

LOCATION: RWSF BR 2018
 WICHITA, KS
 SCALE: AS NOTED
 SHEET NO. OF
 DESIGNED: EKD
 CHECKED: GMS
 DRAWN: DMH
 DATE: 12/15/04
 REVISIONS: BY: APP'D:

CITY OF WICHITA
 CENTRAL CORRIDOR
 ABUTMENT NO. 1 REINFORCING DETAILS

Note:
 Bar dimensions are out-to-out.



STATE	PROJECT NO.	YEAR	SHEET NO.	TOTAL SHEETS
KANSAS	472-84071	2005	BA-26	