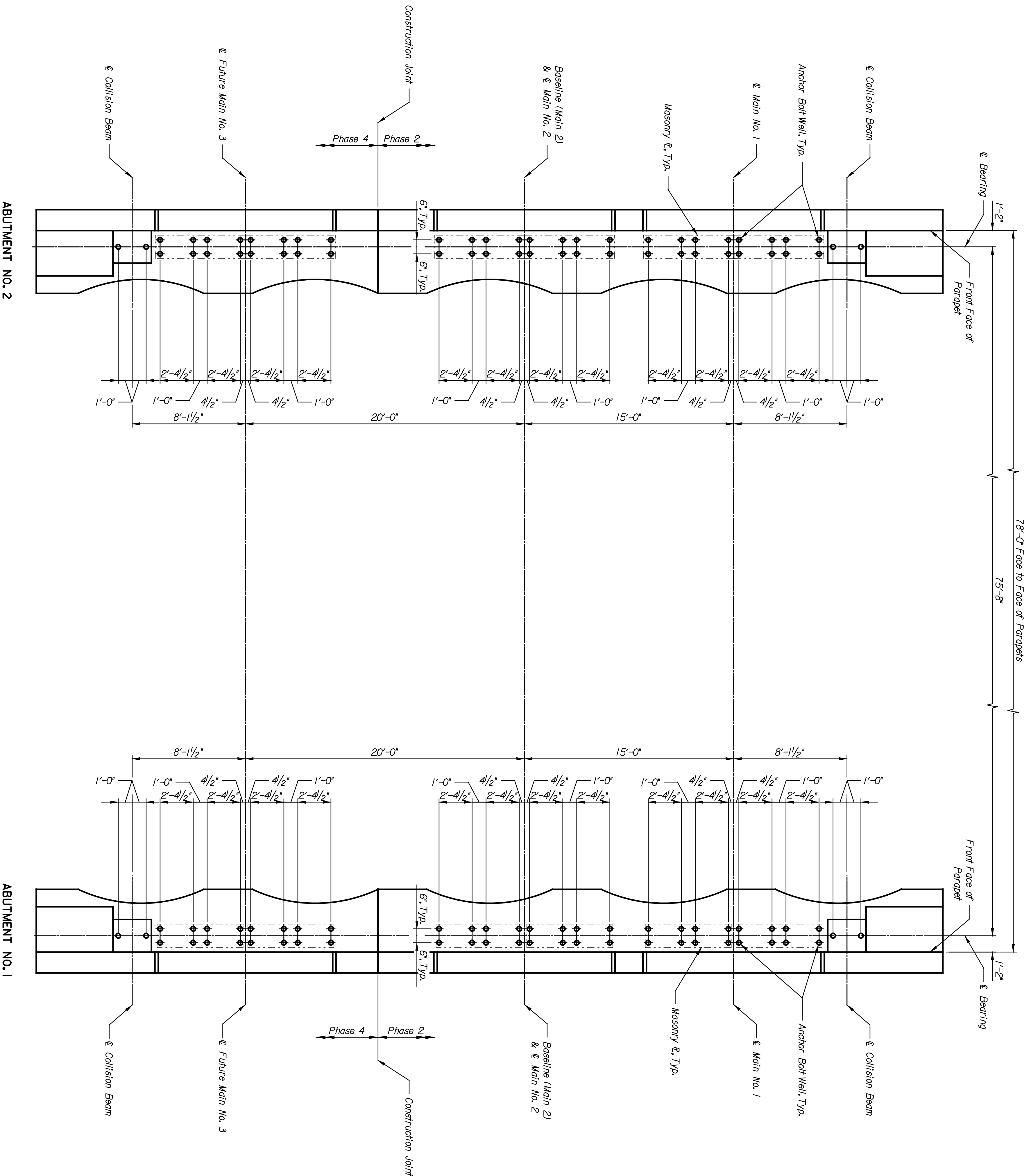
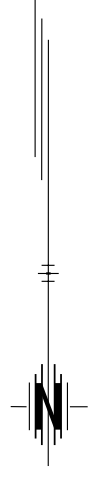


	BY	DATE



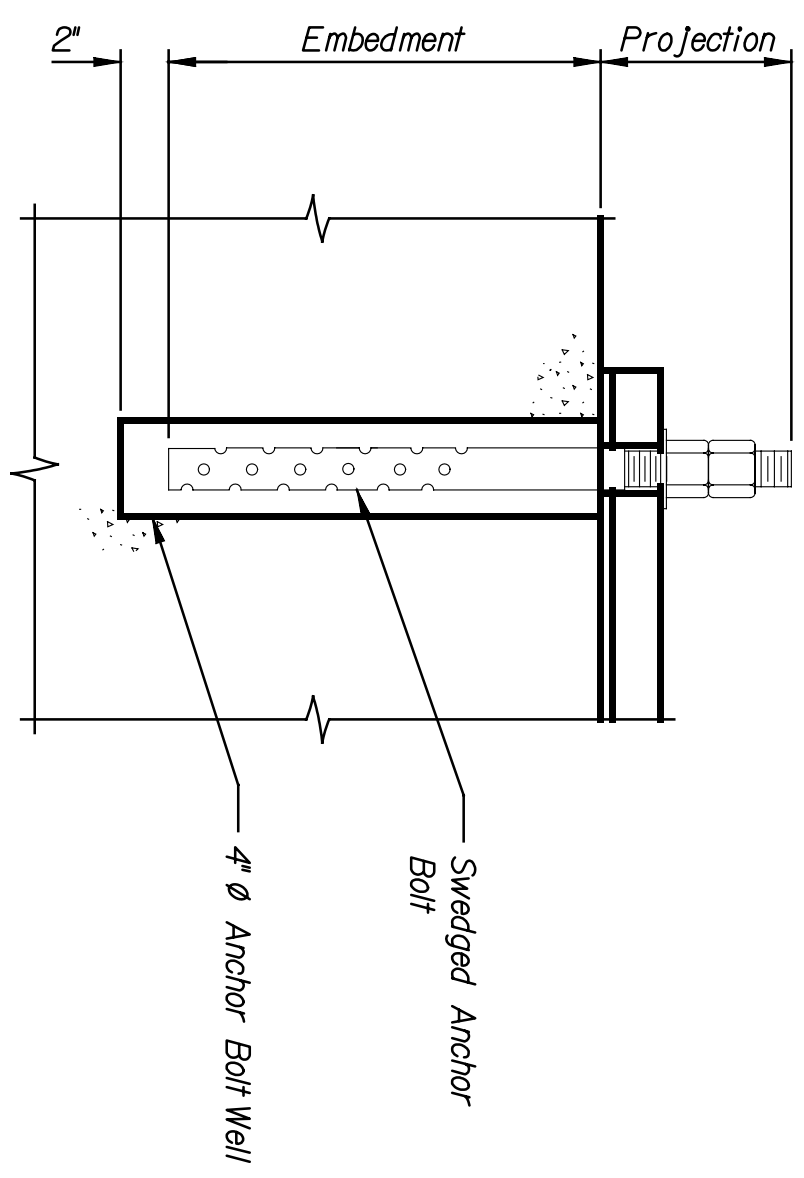
78'-0" Face to Face of Parapets
75'-8"

Front Face of Parapet
1'-2" & Bearing

STATE	PROJECT NO.	YEAR	SHEET NO.	TOTAL SHEETS
KANSAS	472-84071	2005	B5.5	

NOTES:
 Anchor bolt holes shall be pre-formed with roughened inside surfaces. The method of pre-forming shall be submitted to the Engineer for approval.
 The anchor bolt holes shall be sealed to prevent accumulation of water in the holes prior to anchor bolt installation and grouting.
 The anchor bolt holes shall be free of water or other foreign materials at the time of grouting.

REFERENCES:
 Expansion Bearings, Refer to BS.16.
 Fixed Bearings, Refer to BS.17.
 Collision Beam Details, Refer to BS.25.



ANCHOR BOLT WELL DETAIL
 Scale: 1/2"=1'-0"

REVISIONS		BY	APP'D.
NO.	DATE		
3			
2			
1			

CITY OF WICHITA
WICHITA CENTRAL CORRIDOR
2ND STREET
ANCHOR BOLT LAYOUT

DESIGNED	CHKD	SCALE	AS NOTED	APP'D.	LOCATION
DESIGN GR.	DWH	DETAIL	QUANTITIES	DWH	RMSF BR. 20.0
DATE					WICHITA, KS
					LINE SEGMENT 7400

PNTB
 ARCHITECTS ENGINEERS PLANNERS

This sheet designed by:

ANCHOR BOLT LAYOUT
 Scale: 1/4"=1'-0"

ABUTMENT NO. 2

ABUTMENT NO. 1