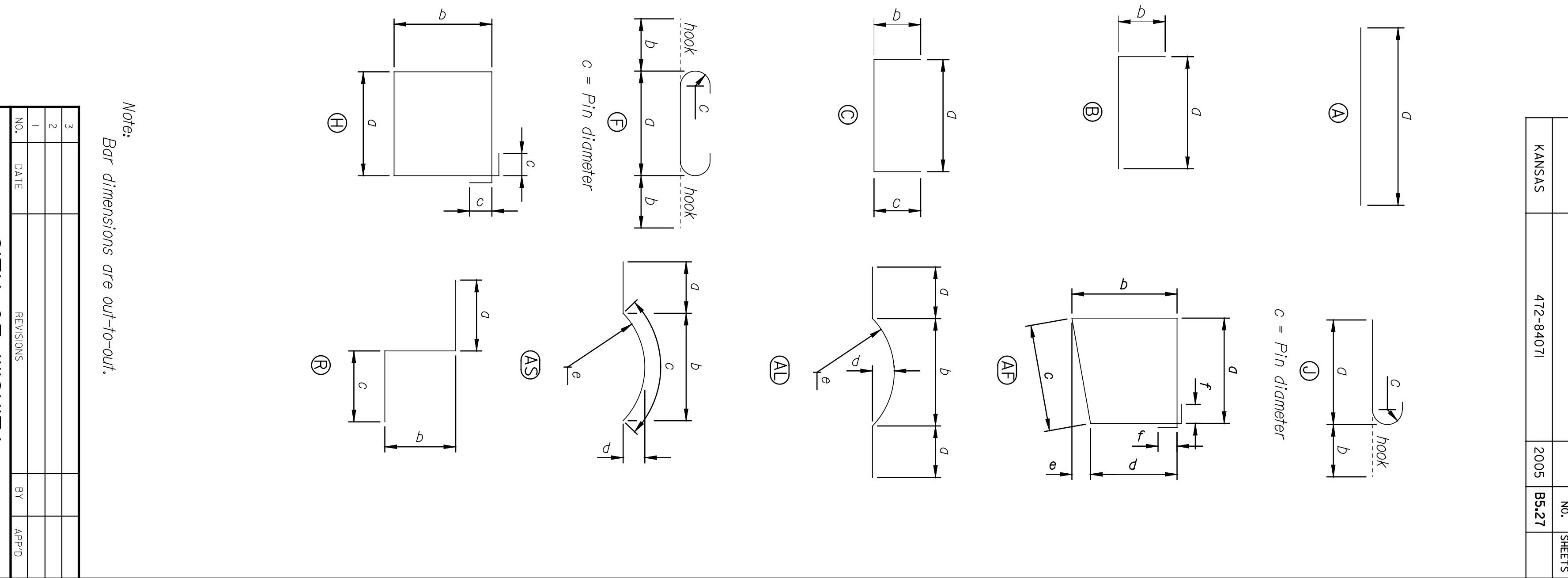


BY	DATE

EPOXY COATED	DESIGN MARK	BENDING MARK	SIZE	NO.	LENGTH	DIMENSIONS					
						d	b	c	d	e	f
	5F01	C	5	333	4'-4"	3'-4"	6"	6"			
	6F01	A	6	34	48'-3"	48'-3"					
	6F03	A	6	12	2'-11"	2'-11"					
X	6F04	A	6	20	3'-0"	3'-0"					
	6F05	A	6	1	1'-0"	1'-0"					
	6F08	B	6	2	8'-5"	5'-8"	2'-9"				
	6F10	A	6	19	3'-0"	3'-0"					
X	8F01	A	8	73	5'-0"	5'-0"					
	8F05	A	8	8	47'-6"	47'-6"					
	10F01	F	10	70	21'-3"	18'-5"	1'-5"	10 3/4"			
	10F03	F	10	8	22'-0"	19'-2"	1'-5"	10 3/4"			
	11F01	A	11	79	18'-5"	18'-5"					
	11F02	A	11	12	19'-2"	19'-2"					
	11F03	J	11	40	13'-7"	12'-0"	1'-7"	1'-0"			
	11F05	J	11	81	23'-5"	21'-10"	1'-7"	1'-0"			
	5F01	C	5	186	4'-4"	3'-4"	6"	6"			
	6F02	A	6	34	24'-2"	24'-2"					
	6F03	A	6	6	2'-11"	2'-11"					
	6F05	A	6	1	2'-4"	2'-4"					
X	8F01	A	8	45	5'-0"	5'-0"					
	8F04	A	8	8	24'-2"	24'-2"					
	10F01	F	10	43	21'-3"	18'-5"	1'-5"	10 3/4"			
	11F01	A	11	49	18'-5"	18'-5"					
	11F03	J	11	24	13'-7"	12'-0"	1'-7"	1'-0"			
	11F05	J	11	49	23'-5"	21'-10"	1'-7"	1'-0"			
	4A01	C	4	6	5'-9"	3'-9"	1'-0"	1'-0"			
	4A02	C	4	4	5'-1"	3'-1"	1'-0"	1'-0"			
	4A03	C	4	5	4'-4"	2'-4"	1'-0"	1'-0"			
X	4A04	C	4	31	5'-8"	3'-8"	1'-0"	1'-0"			
	4A30	C	4	4	5'-6"	2'-8"	1'-5"	1'-5"			
	4A31	A	4	5	1'-10"	1'-10"					
	5A01	A	5	14	24'-9"	24'-9"					
	5A03	A	5	4	8'-3"	8'-3"					
	5A04	A	5	4	1'-8"	1'-8"					
	5A05	A	5	4	6'-8"	6'-8"					
X	5A06	AL	5	19	15'-0"	2'-10"	9'-0 7/8"	10'-10 1/8"			
X	5A07	AL	5	38	15'-0"	2'-10"	9'-0 7/8"	10'-10 1/8"			
X	5A08	A	5	19	42'-9"	42'-9"					
X	5A09	AS	5	19	5'-4"	2'-10"	2'-4"	2'-6"	9 3/8"	10'-10 1/8"	
X	5A13	AL	5	31	16'-0"	3'-4"	9'-0 7/8"	10'-10 1/8"			
X	5A14	A	5	3	15'-8"	15'-8"					
X	5A15	B	5	19	7'-1"	6'-3"	10"				
X	5A16	A	5	2	5'-7"	5'-7"					
	5A30	A	5	6	3'-9"	2'-11"	10"				
	5A31	A	5	11	5'-0"	5'-0"					
	5A32	B	5	6	5'-10"	5'-0"					
	6A01	A	6	5	43'-3"	43'-3"					
	6A02	C	6	41	3'-2"	1'-2"					

EPOXY COATED	DESIGN MARK	BENDING MARK	SIZE	NO.	LENGTH	DIMENSIONS					
						d	b	c	d	e	f
	6A04	C	6	41	6'-8"	4'-8"	1'-0"	1'-0"			
X	6A05	A	6	37	18'-1"	18'-1"					
	6A07	A	6	122	10'-8"	10'-8"					
X	6A09	A	6	20	30'-3"	30'-3"					
	6A10	A	6	19	30'-3"	30'-3"					
	6A32	C	6	6	4'-11"	2'-11"	1'-0"	1'-0"			
	6A33	A	6	18	8'-10"	8'-10"					
	8A01	B	8	26	7'-5"	6'-1"	1'-4"				
X	9A01	B	9	41	17'-3"	15'-8"	1'-7"				
	4A30	C	4	4	5'-6"	2'-8"	1'-5"	1'-5"			
	4A31	A	4	5	1'-10"	1'-10"					
X	5A03	A	5	4	8'-3"	8'-3"					
	5A06	AL	5	19	15'-0"	2'-10"	9'-0 7/8"	10'-10 1/8"			
	5A10	AS	5	19	11'-11"	2'-10"	8'-9 1/2"	9'-0 3/8"	11 7/8"	10'-10 1/8"	
	5A11	A	5	14	24'-2"	24'-2"			3 3/8"	10'-10 1/8"	
	5A12	A	5	19	24'-2"	24'-2"					
	5A30	B	5	6	3'-9"	2'-11"	10"				
	5A31	A	5	11	5'-0"	5'-0"					
	5A32	B	5	6	5'-10"	5'-0"	10"				
	5A33	A	5	12	12'-0"	12'-0"					
	5A34	B	5	27	4'-0"	3'-2"	10"				
	5A35	A	5	2	6'-7"	6'-7"					
	5A36	A	5	1	12'-0"	12'-0"					
	5A37	AF	5	13	14'-2"	1'-2"	5'-7"	1'-3"	5'-2"	5"	
	6A02	C	6	25	3'-2"	1'-2"	1'-0"	1'-0"			
	6A04	C	6	25	6'-8"	4'-8"	1'-0"	1'-0"			
X	6A05	A	6	23	18'-1"	18'-1"					
	6A06	A	6	5	24'-2"	24'-2"					
	6A07	A	6	74	10'-8"	10'-8"					
	6A32	C	6	6	4'-11"	2'-11"	1'-0"	1'-0"			
	6A33	A	6	18	8'-10"	8'-10"					



PNTEB
 ARCHITECTS ENGINEERS PLANNERS

This sheet designed by:

DESIGNED	CHKD	SCALE	AS NOTED	APP'D
DESIGNER	ENR	DATE	QUANTITIES	DUL
DATE	DWH	DATE	DWH	DATE

LOCATION: RNSF BR 20.0
 WICHITA, KS

CITY OF WICHITA
 2ND STREET
 ABUTMENT NO. 2 REINFORCING DETAILS

STATE	PROJECT NO.	YEAR	SHEET NO.	TOTAL SHEETS
KANSAS	472-84071	2005	BS-27	