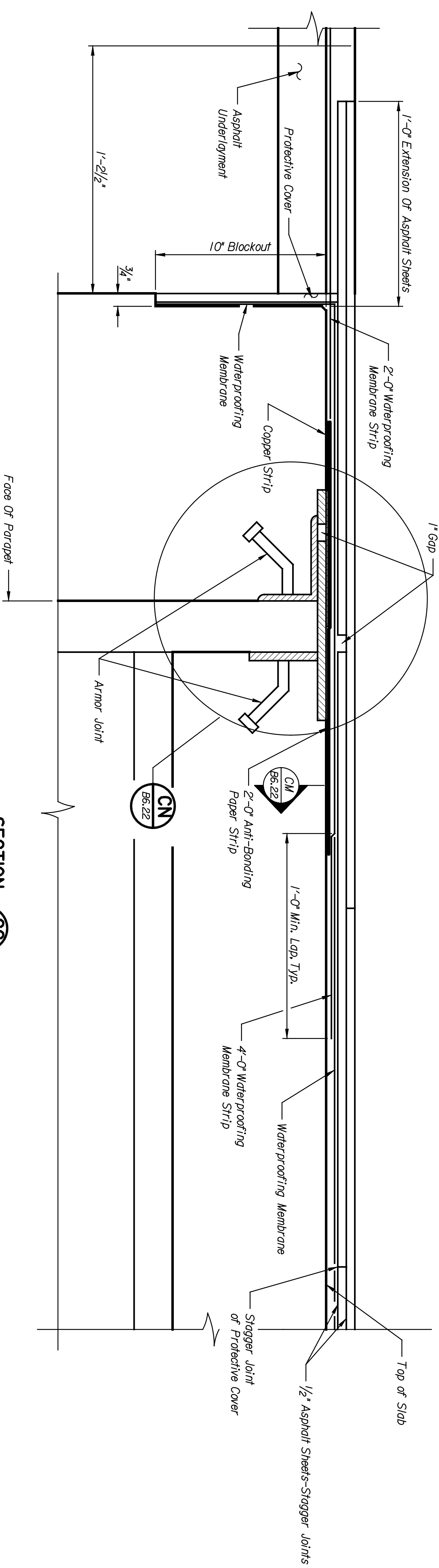
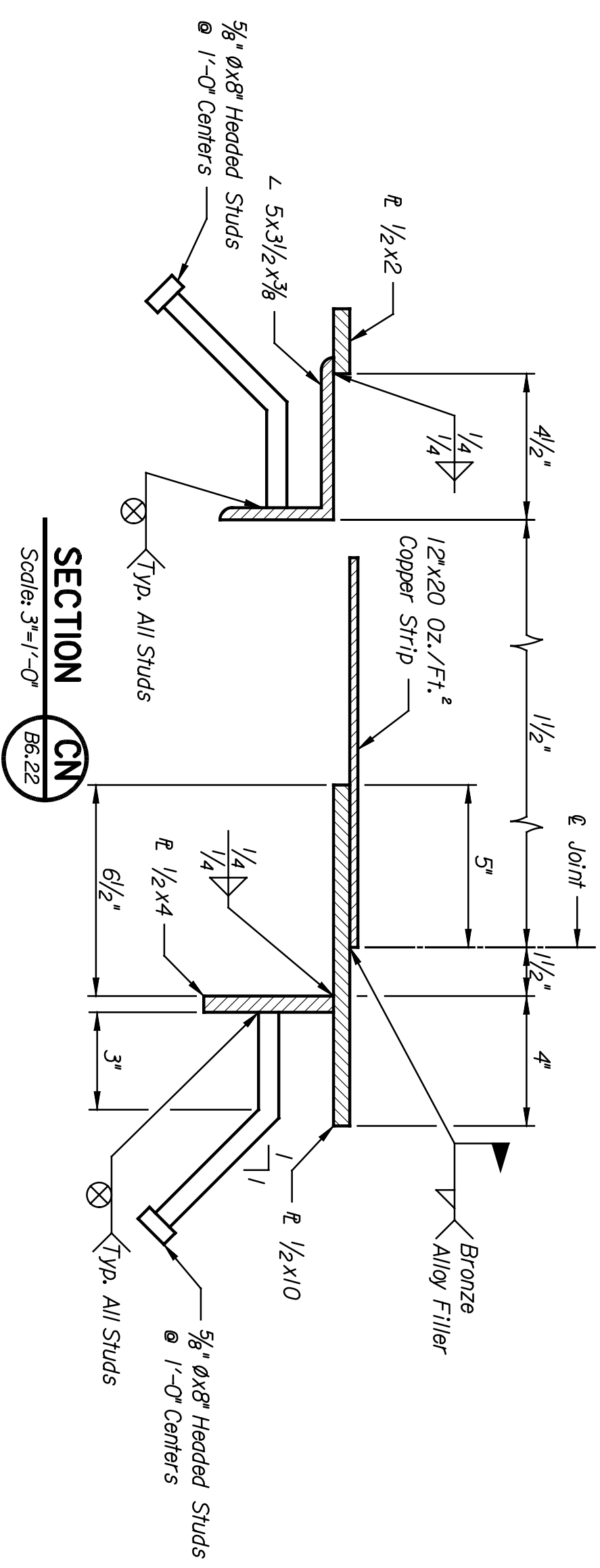


DATE	BY

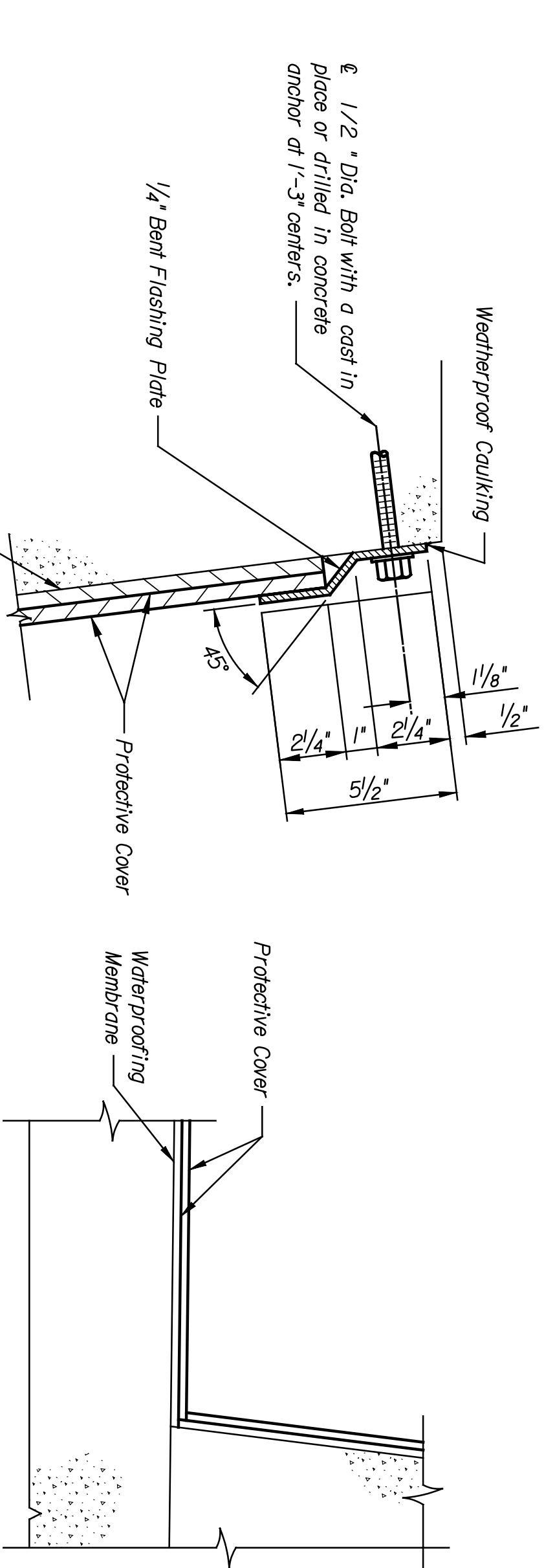
Plotted on: 04-JAN-2005 13:28 *time\$
 djmlison Plot Queue: \$queue\$
 Plot Scale: \$scale\$ Pen Table: \$pentables\$
 Design Filename: k:\b29049\BridgesDec2004\Base Bid\01s+Street\drawings\22.dgn.



SECTION CG
 Scale: 3/8"=1'-0"
 B6.10
 B6.7



SECTION CN
 Scale: 3/8"=1'-0"
 B6.22



DETAIL CH
 Not To Scale
 B6.19



DETAIL CJ
 Not To Scale
 B6.19

STATE	PROJECT NO.	YEAR	TOTAL SHEETS
KANSAS	472-84071	2005	B6.22

NOTES:

Waterproofing materials, accessories and construction shall conform to the requirements of the AEMMA Manual of Railway Engineering, Chapter 29-Waterproofing, unless noted otherwise.

Waterproofing shall consist of 0.060-inch thick elastomeric sheets of butyl (I/P) or ethylene propylene diene terpolymer (EPDM), or a 0.100-inch thick cold, spray-applied waterproofing membrane.

A protective cover placed over the waterproofing membrane shall consist of two layers of asphalt planks or asphaltic panels conforming to and placed in accordance with the specifications.

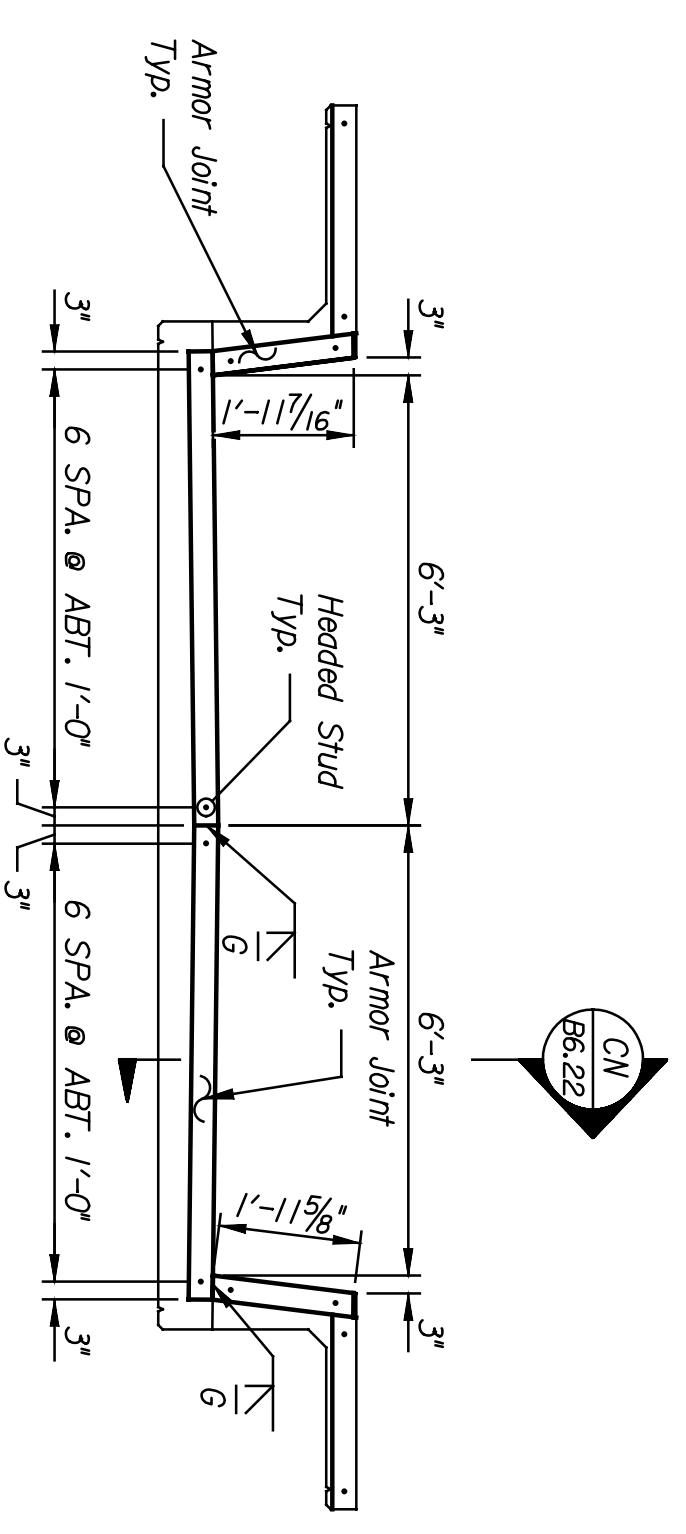
Anti-bonding paper shall be impervious to bituminous materials and have a minimum mass of 5 lbs per 100 SF (0.25kg/m²).

Concrete anchors for flashing plates shall be stainless steel, cast-in-place or drilled anchors.

Flashing plates shall conform to ASTM A36 or ASTM A709 and shall be hot-dipped galvanized, in accordance with ASTM A123, after fabrication.

Copper sheet or strip shall conform to ASTM B370.

Armor joint plates and angles shall conform to ASTM A36 or ASTM A709 and shall be hot-dipped galvanized in accordance with ASTM A123 after fabrication.



ARMOR JOINT DETAIL/ELEVATION
 Scale: 3/8"=1'-0"

NO.	DATE	REVISIONS	BY	APP'D.
3				
2				
1				

CITY OF WICHITA
1ST STREET
WATERPROOFING & DRAINAGE DETAILS

SHEET NO.	OF	SCALE	AS NOTED	APP'D.
DESIGNED	ENR	DETAILED	DUL	QUANTITIES
DESIGN	CR.	DWH	JWH	DWH
TRACED	CR.	DWH		

PNTB
 ARCHITECTS ENGINEERS PLANNERS

This sheet designed by: