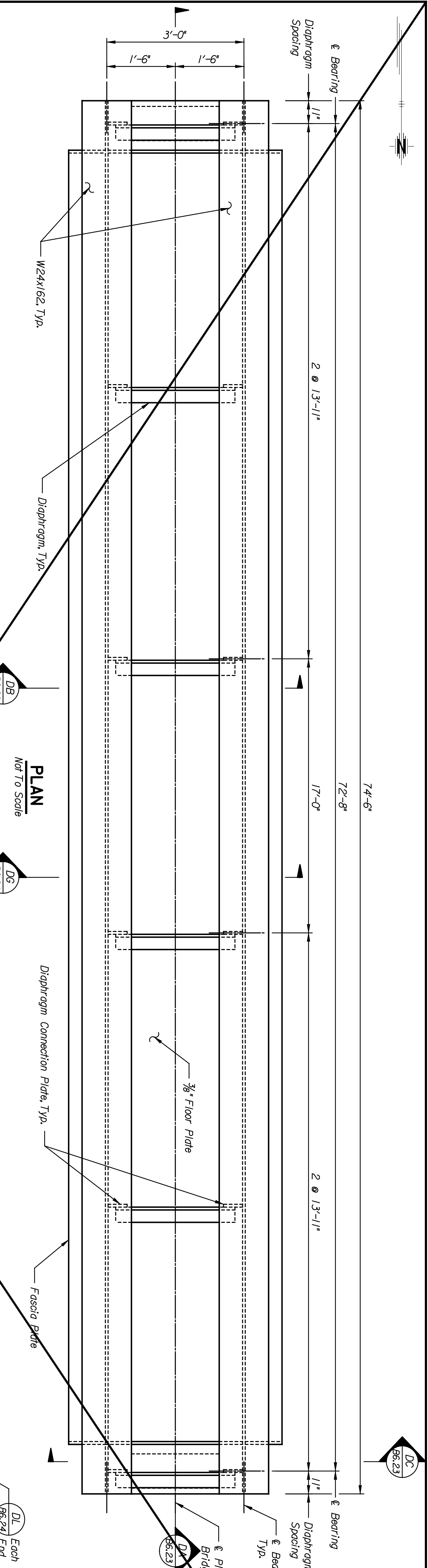


BY	DATE

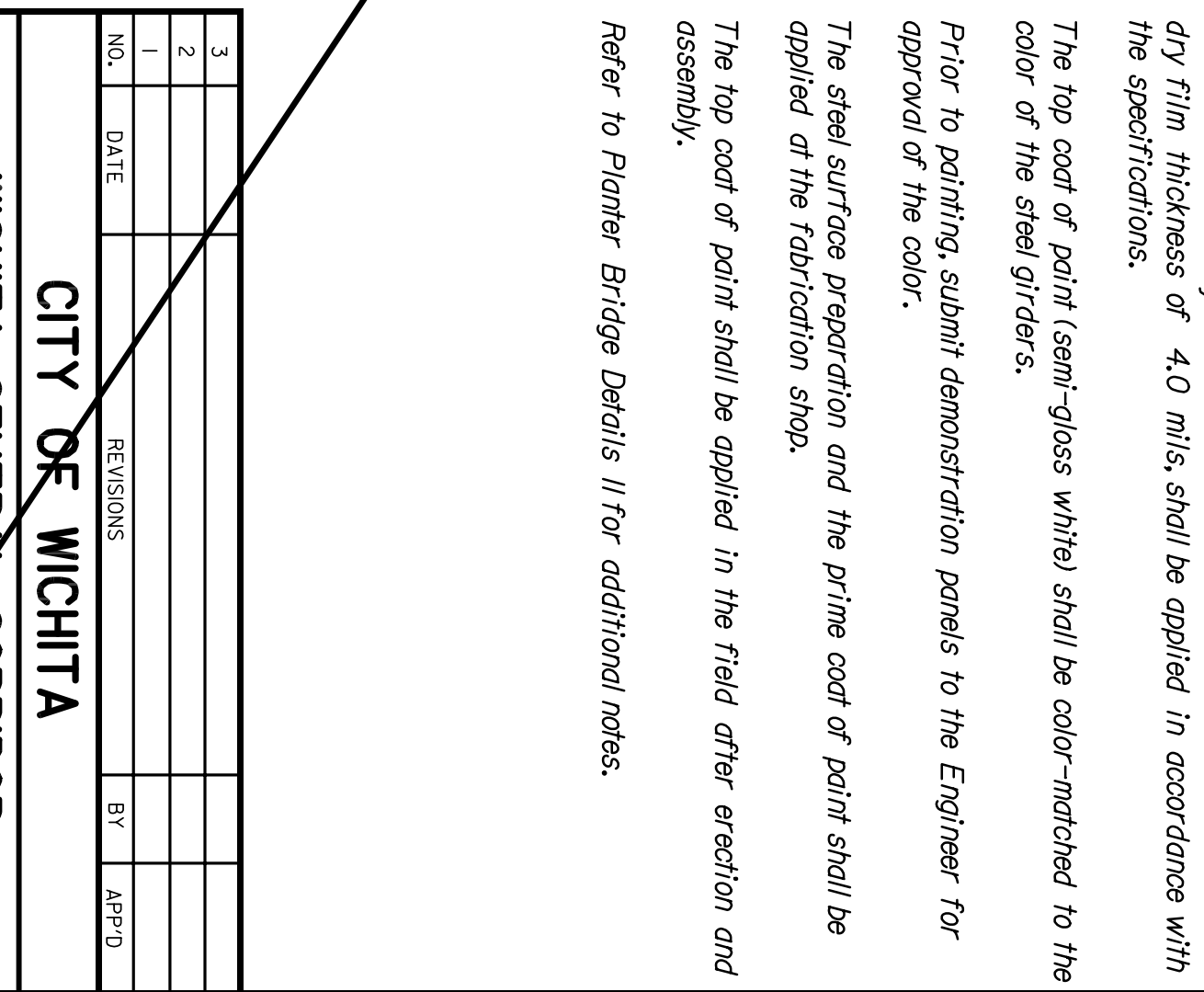
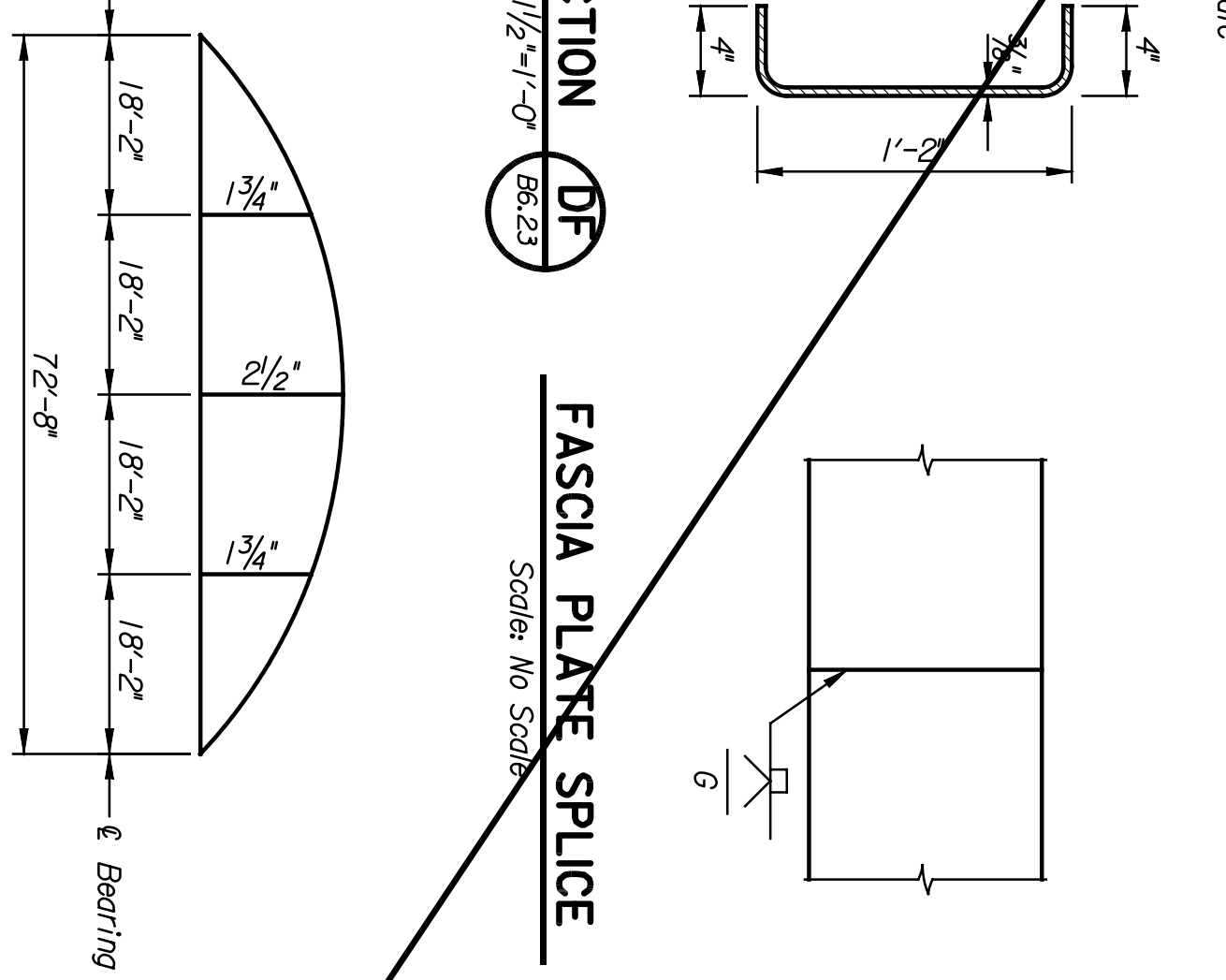
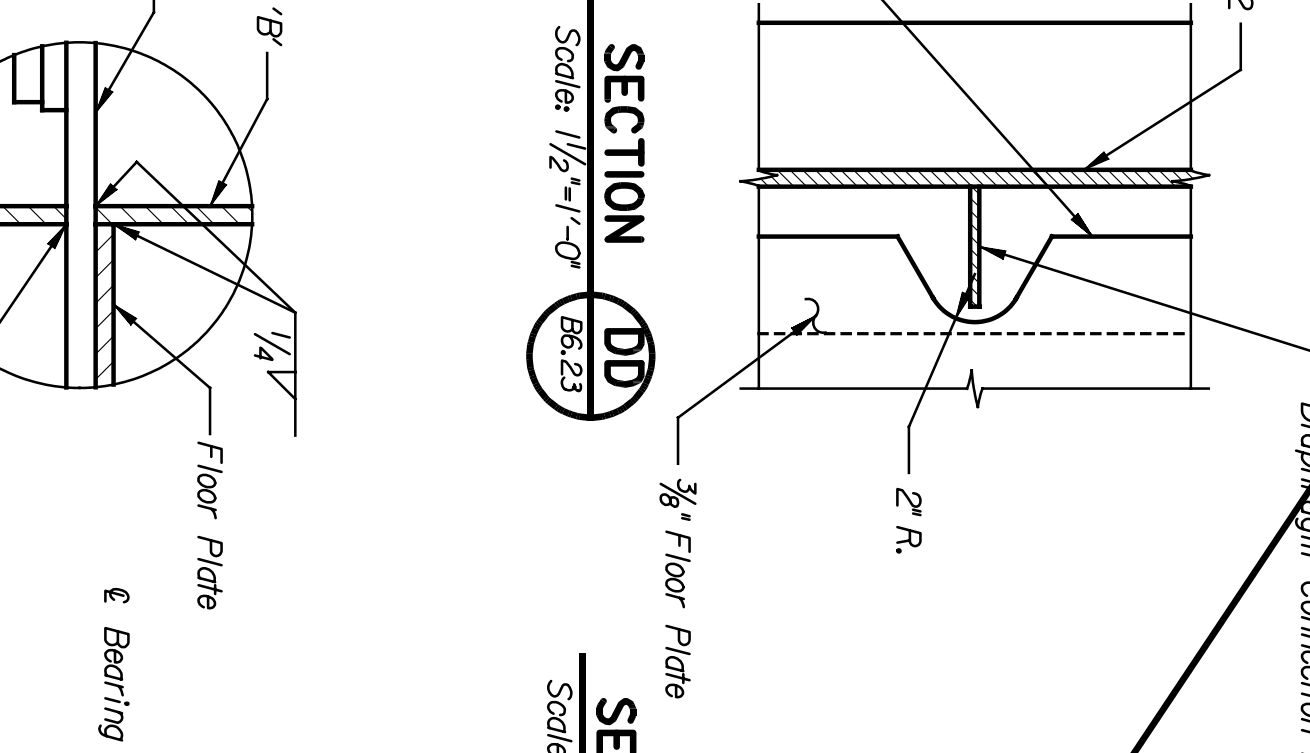
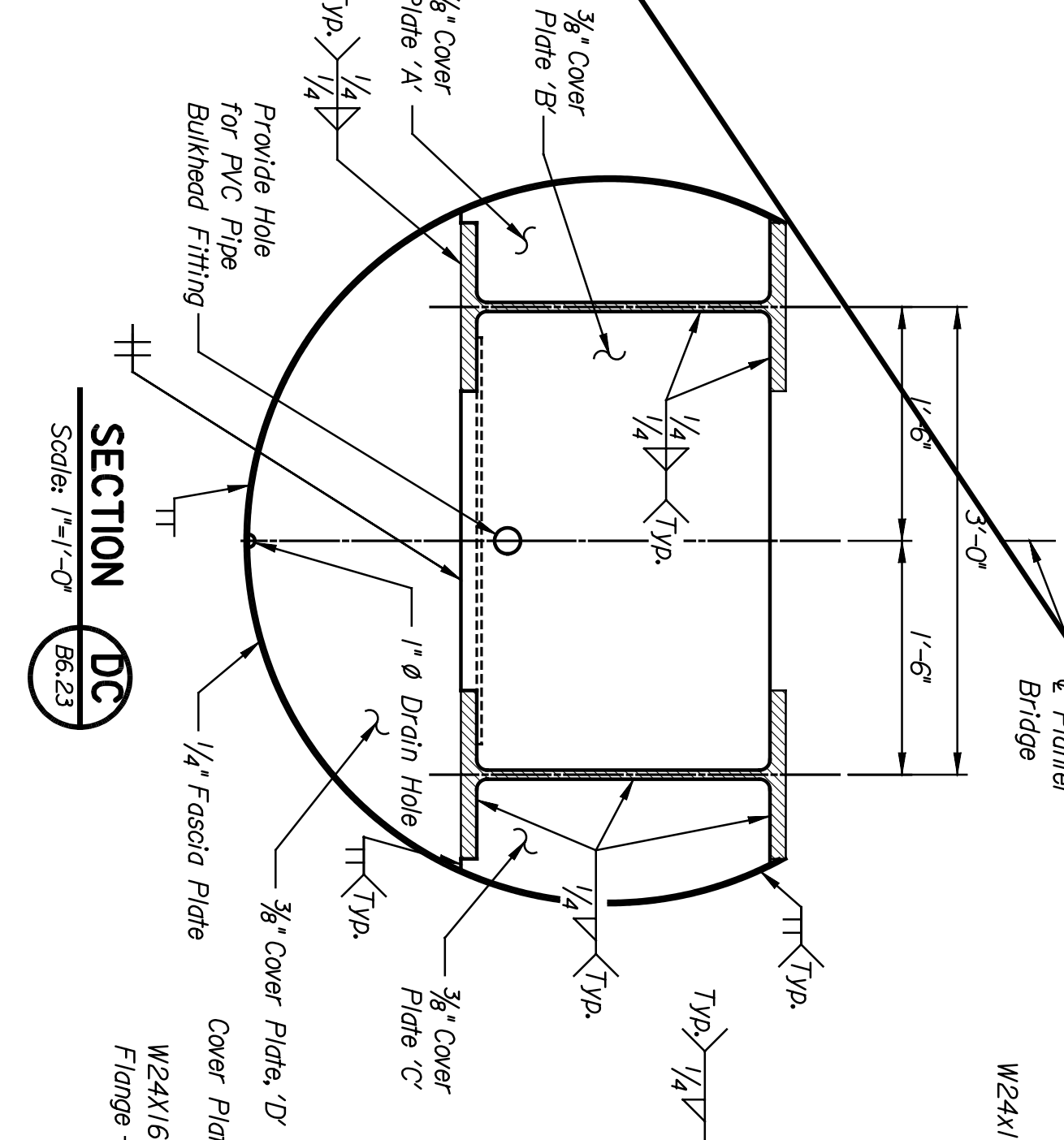
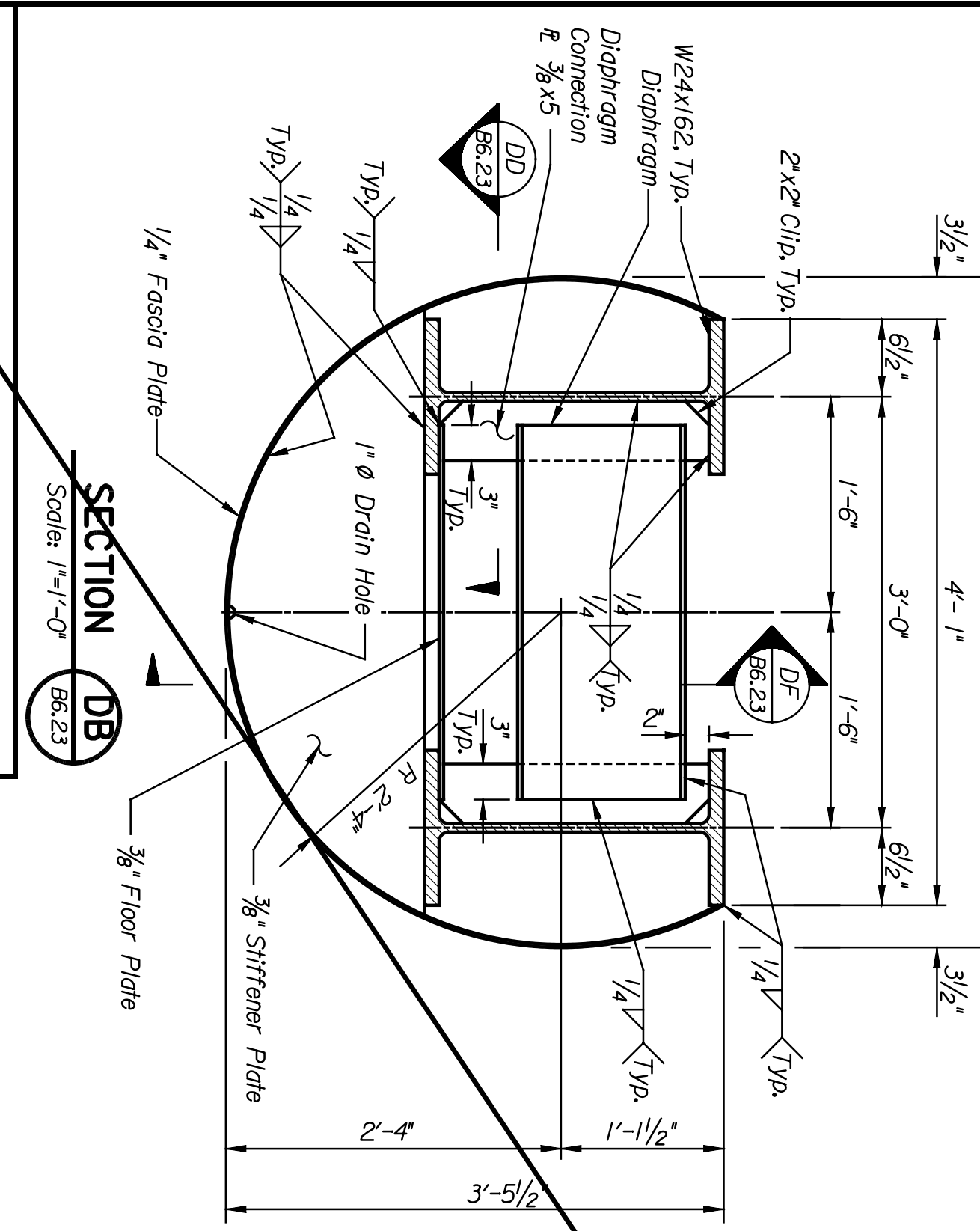
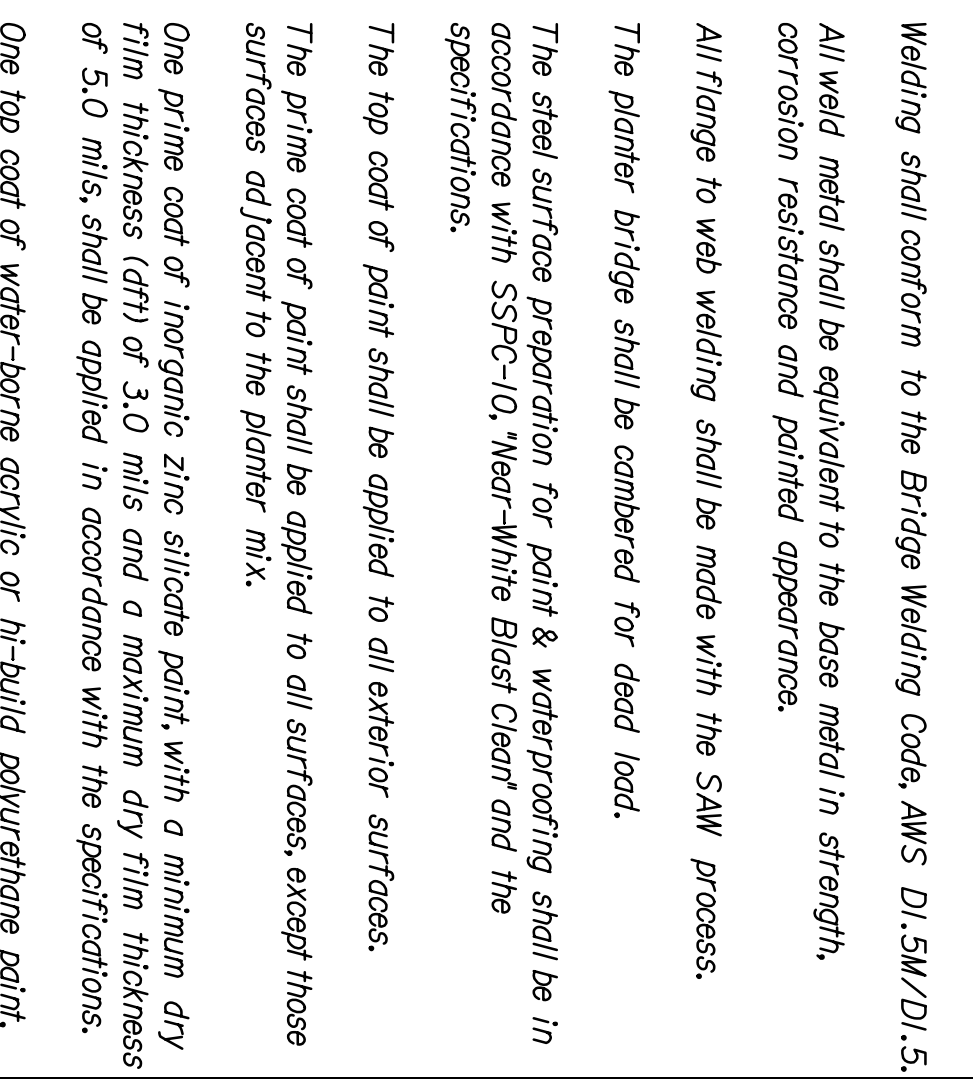
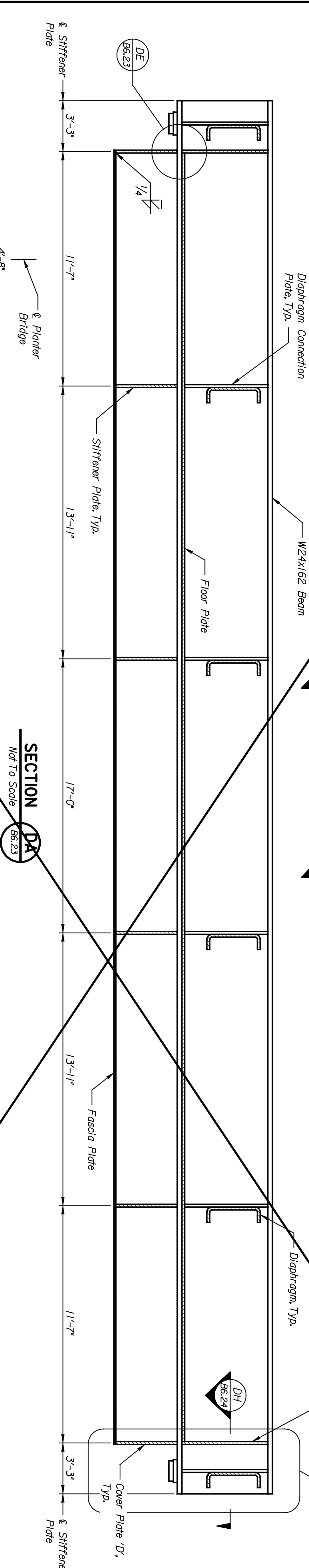
Plotted on: 04-JAN-2005 13:28 *time\$
 djmlson Plot Queue: #queue\$
 Plot Scale: #scale\$ Pen Table: #pentable\$
 Design Filename: K:\b29049\BridgesDec2004\Base Bld\01stStreet\drawings\fl3a.dgn.



STATE	PROJECT NO.	YEAR	SHEET NO.	TOTAL SHEETS
KANSAS	472-84071	2005	166.23	

NOTES:
 PLANTER BRIDGE DESIGN SPECIFICATIONS:
 Standard Specifications for Structural Supports for Highways
 Signs, Luminaires and Traffic Signals, 4th Edition with Interims
 through 2002, American Association of State Highway and
 Transportation Officials, 2002.

PLANTER BRIDGE DESIGN LOADS:
 Dead Load: 150 pcf
 Unit Weight of Concrete,
 Unit Weight of Steel, 490 pcf
 Live Load: Unit Weight of Planter Mix Soil, 120 pcf
 Live Loads: None
 Ice: 3.0 psf
 Seismic: Site Coefficient, 1.0
 Temperature: Design Temperature, 60 degrees F
 Design Temperature Range, 50 degrees F
 Rise, Fall, 50 degrees F
 Minimum Service Temperature Zone, Zone 2
 Other Loads: As specified in AASHTO.
 All structural steel shall conform to ASTM A709, Grade 50T2, unless noted otherwise.
 Welding shall conform to the Bridge Welding Code, AWS D1.5M/D1.5.
 All weld metal shall be equivalent to the base metal in strength, corrosion resistance and painted appearance.
 All flange to web welding shall be made with the SAW process.
 The planter bridge shall be cambered for dead load.
 The steel surface preparation for paint & waterproofing shall be in accordance with SSPC-10, Near-White Blast Clean and the specifications.
 The top coat of paint shall be applied to all exterior surfaces.
 The prime coat of paint shall be applied to all surfaces, except those surfaces adjacent to the planter mix.
 One prime coat of inorganic zinc silicate paint, with a minimum dry film thickness (dft) of 3.0 mils and a maximum dry film thickness of 5.0 mils, shall be applied in accordance with the specifications.
 One top coat of water-borne acrylic or hi-build polyurethane paint, with a minimum dry film thickness of 3.0 mils and a maximum dry film thickness of 4.0 mils, shall be applied in accordance with the specifications.
 The top coat of paint (semi-gloss white) shall be color-matched to the color of the steel girders.
 Prior to painting, submit demonstration panels to the Engineer for approval of the color.
 The steel surface preparation and the prime coat of paint shall be applied at the fabrication shop.
 The top coat of paint shall be applied in the field after erection and assembly.
 Refer to Planter Bridge Details II for additional notes.



CH2M HILL
 ARCHITECTS ENGINEERS PLANNERS

WICHITA CENTRAL CORRIDOR
 1ST STREET
 PLANTER BRIDGE DETAILS I

SHEET NO.	OF	SCALE AS NOTED	APPD.	DESIGNED	CWS	DETAILS	LDJ	QUANTITIES	DLL	TARGET	DLL
1	3			DESIGNED	CK	DETAIL	CK	LDJ	QUANTITIES	DLL	TARGET
NO.	DATE	REVISIONS	BY	APPD.							

LOCATION: RNSF BR 202
 WICHITA, KS
 LINE SEGMENT 7400