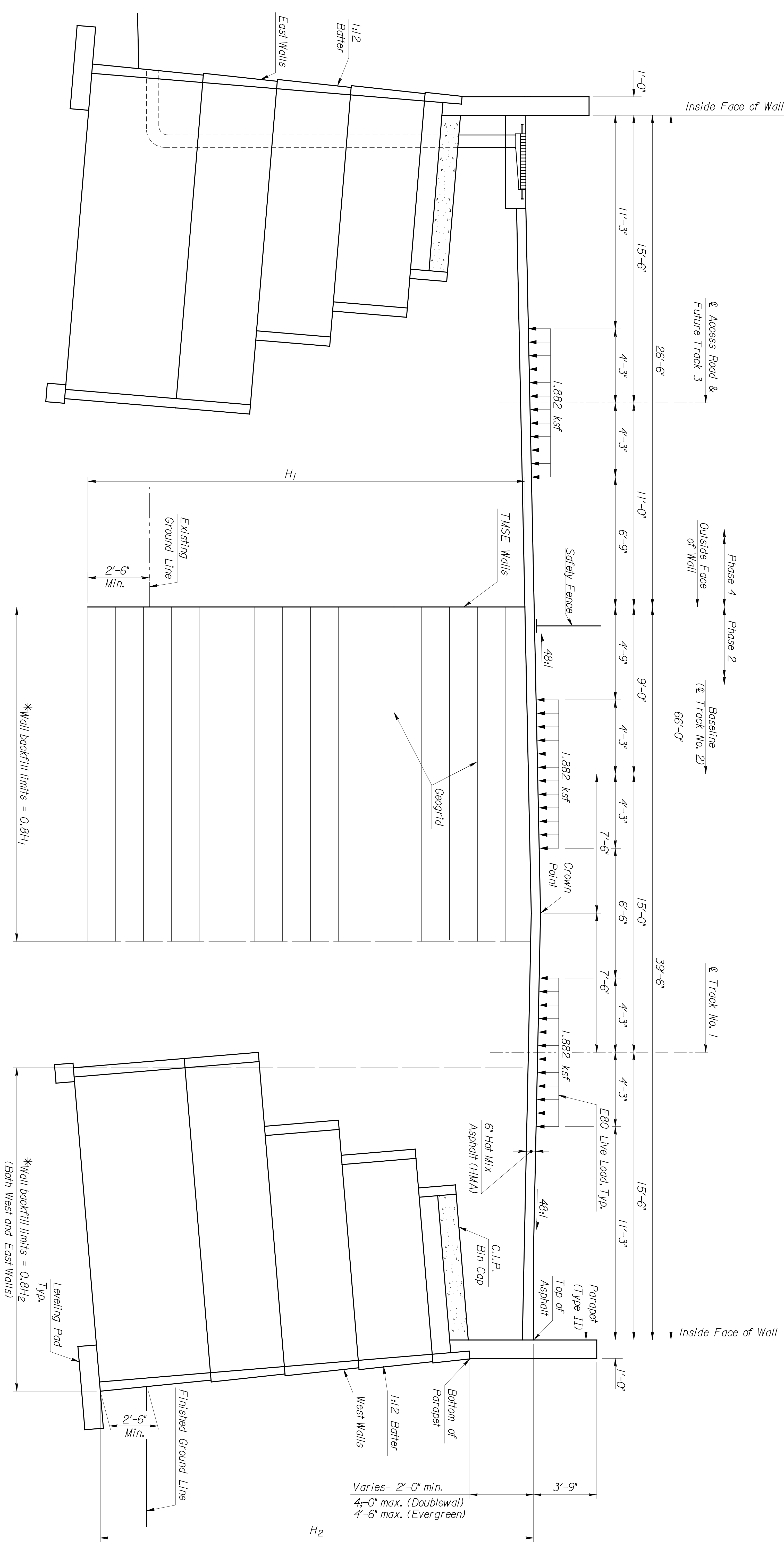


BY	DATE



*Wall backfill limits = $0.8H_1$

*Wall backfill limits = $0.8H_2$
 (Both West and East Walls)

TYPICAL SECTION
 (Looking South)

This sheet designed by:



ARCHITECTS ENGINEERS PLANNERS

STATE	PROJECT NO.	YEAR	SHEET NO.	TOTAL SHEETS
KANSAS	472-94071	2005	W14	

SHEET NO. OF		SCALE		APPD.	
DESIGNED	DATE	DETAILED	DATE	ENR	QUANTITIES
DESIGN	CR.	DETAIL	CR.	CHK	QUANT.

CITY OF WICHITA
 WICHITA CENTRAL CORRIDOR
 CONCRETE BIN WALL ALTERNATIVE
 (DOUBLEWAL OR EVERGREEN)
 TYPICAL SECTION

Notes:
 *Embankment quantities were calculated assuming all backfill material within the limits of 0.8 times the wall height (H_1 or H_2) as shown in the plans is included in the price bid for the retaining wall.
 H_1 = plan height of TMSE wall, measured from top of wall to base of wall
 H_2 = plan height of Concrete Bin wall, measured from top of asphalt to top of concrete leveling pad