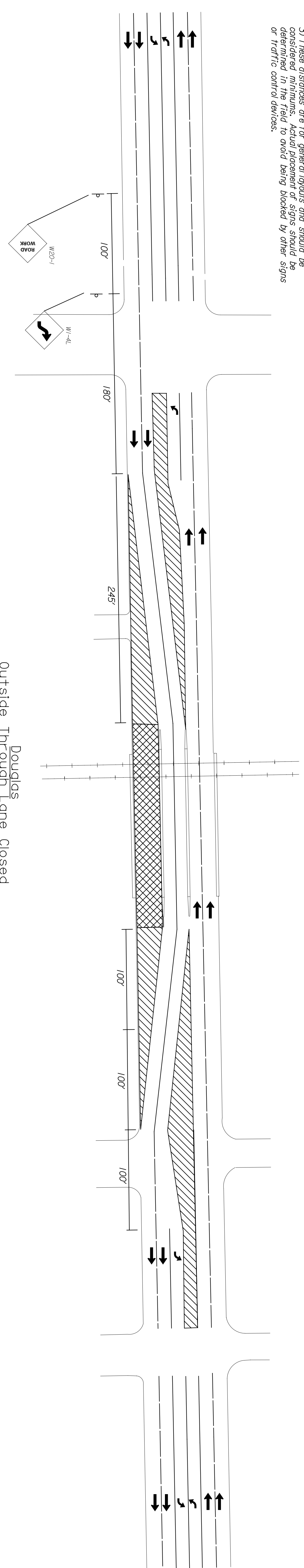


STATE	PROJECT NO.	YEAR	SHEET NO.	TOTAL SHEETS
KANSAS	472-84071	2005	514.6	

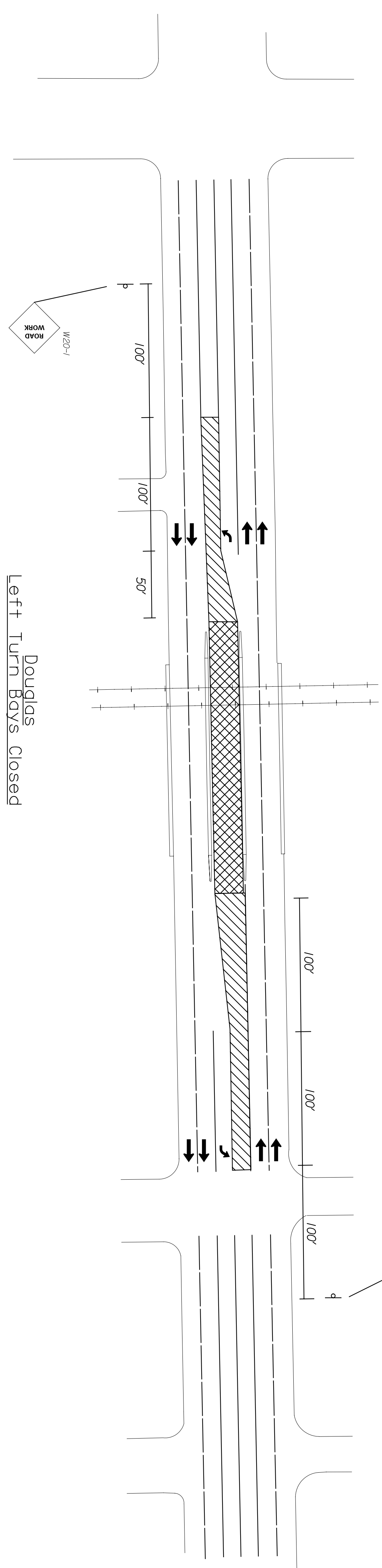
TRAFFIC CONTROL NOTES:

1. If roadway will be under reduced lane configuration for longer than one week concrete barricades should be used to protect the work zone.
- 2) All distances are from the Manual for Uniform Traffic Control Devices (MUTCD). The contractor has the ability to propose alternate methods, however they must conform to this manual.
- 3) These distances are for general layouts and should be considered minimums. Actual placement of signs should be determined in the field to avoid being blocked by other signs or traffic control devices.

DATE	BY



Douglas
Outside Through Lane Closed



Douglas
Left Turn Bays Closed

LEGEND

	Work Zone
	Protected Area
	Channelizers

This sheet designed by:



3				
2				
1				
NO.	DATE	REVISIONS	BY	APP'D.

CITY OF WICHITA
WICHITA CENTRAL CORRIDOR
TRAFFIC CONTROL
DOUGLAS

SHEET NO.	OF	SCALE	APP'D.	TRAFFIC
DESIGNED		DETAILED	QUANTITIES	TRACED
DESIGN OK.		DETAIL OK.	QUAN. OK.	TRACE OK.