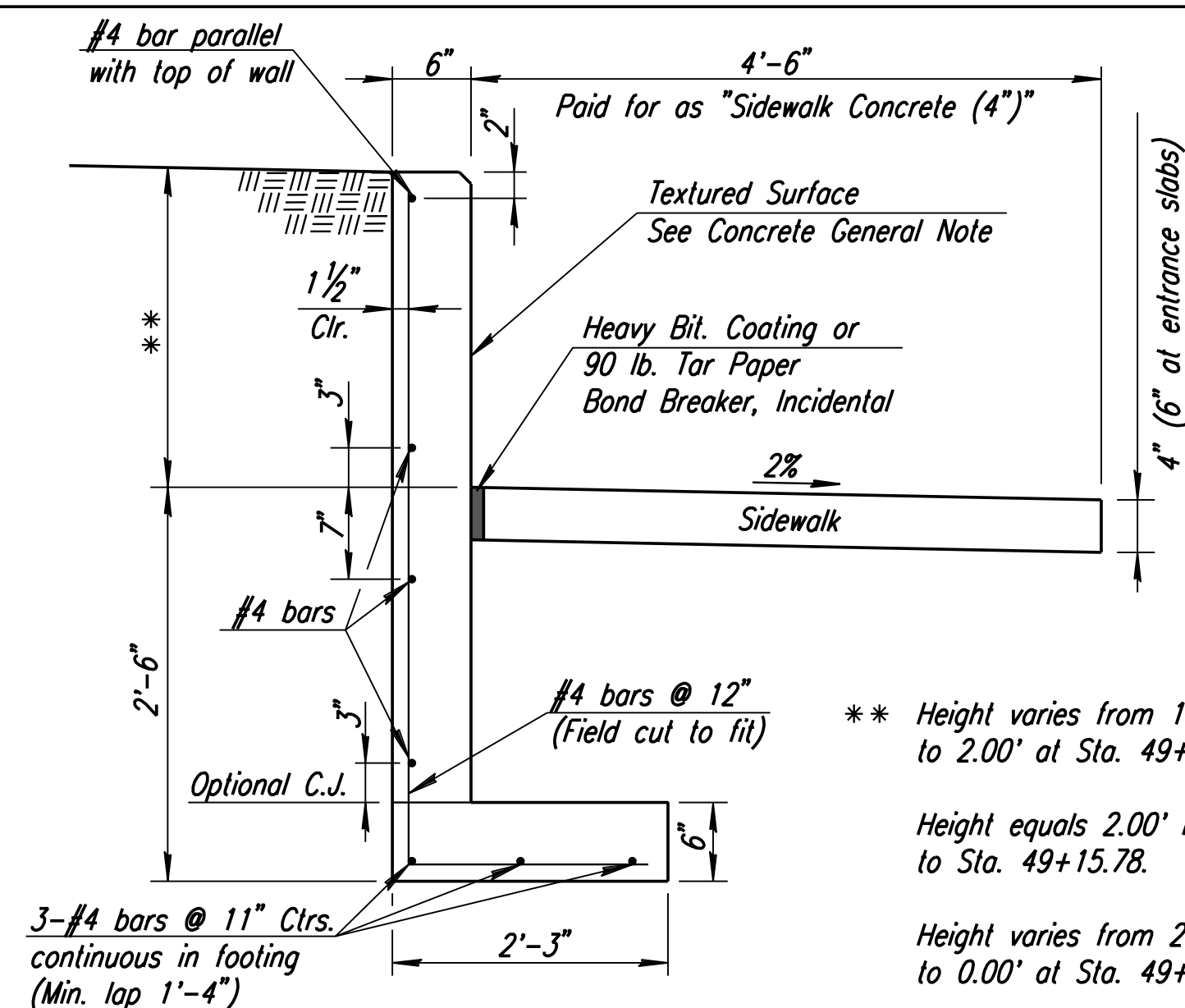
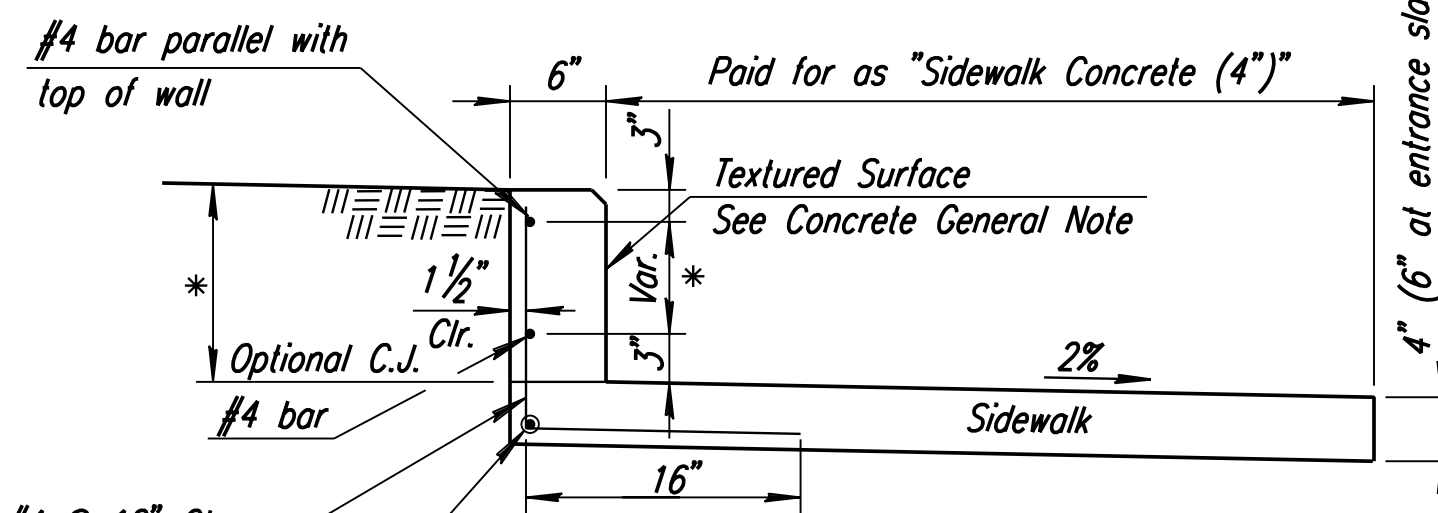


### RETAINING WALL DETAILS



TYPE II WALL SECTION



TYPE I WALL SECTION

Note: Contraction and Expansion joints in Wall Type I shall match the joints in the sidewalk. Expansion joints to be spaced at 90' maximum. Reinforcing steel in Retaining Wall Type I to run continuous thru contraction joints.

\* Height varies from 0' to 1' Max. The Contractor shall field adjust wall height to match existing ground as directed by the engineer.

\*\* Height varies from 1.00' at Sta. 48+38.93 (Min. lap 1'-4") to 2.00' at Sta. 49+00.

Height equals 2.00' from Sta. 49+00 to Sta. 49+15.78.

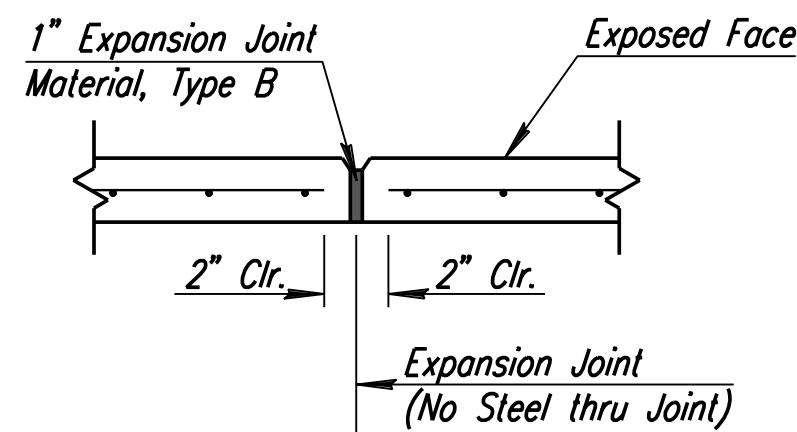
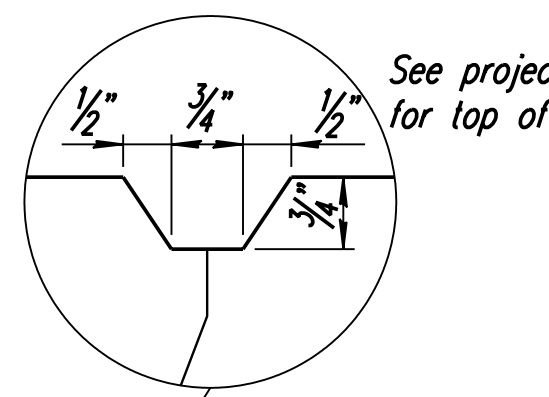
Height varies from 2.00' at Sta. 49+15.78 to 0.00' at Sta. 49+22.78

3-#4 bars @ 11" Ctrs. continuous in footing (Min. lap 1'-4")

Height equals 2.00' from Sta. 49+00 to Sta. 49+15.78.

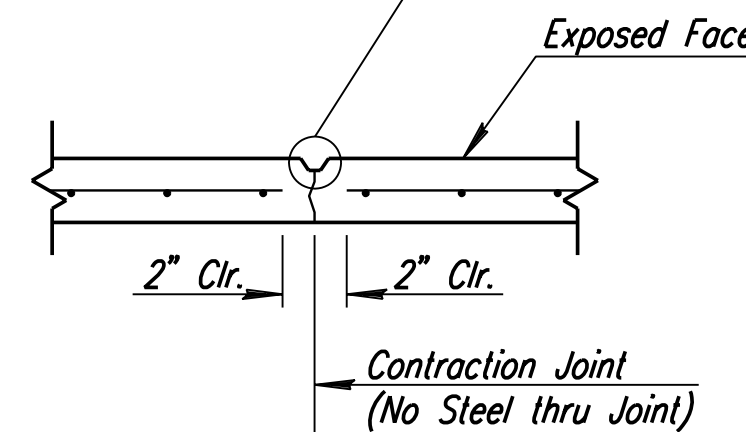
Height varies from 2.00' at Sta. 49+15.78 to 0.00' at Sta. 49+22.78

See project profile sheets for top of wall elevations.



EXPANSION JOINT DETAIL

Walls Type I & Type II (Spacing=90'-0" max.)



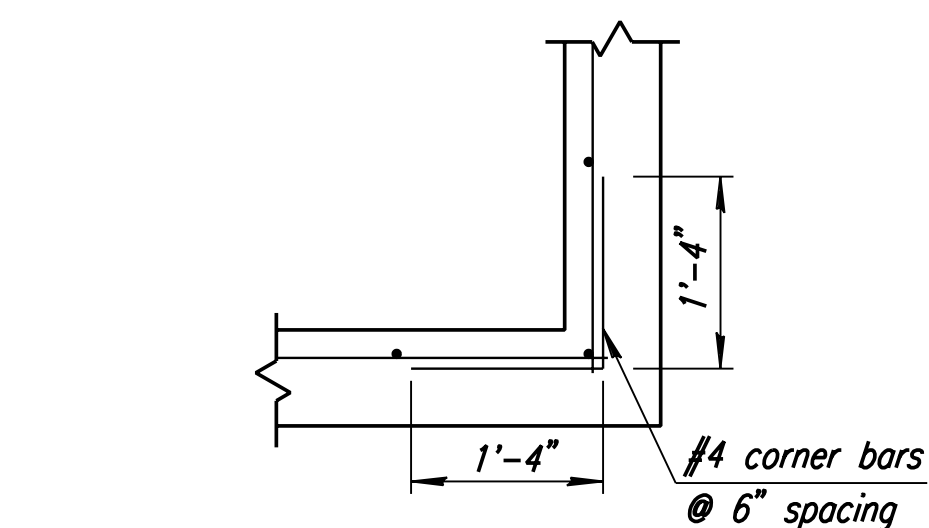
CONTRACTION JOINT DETAIL

Wall Type II Only (Spacing=30'-0" max.)

### GENERAL NOTES

CONCRETE: Bevel all exposed edges with a 3/4 inch triangular mounding. Exposed surfaces shall have a textured surface. The pattern shall be verified & approved by the engineer. The pattern is (pattern 16991 Medium Sandblast Graylastic) by Fitzgerald Formliners or approved equal. All Cost associated with surface texturing shall be Subsidiary to LF to Retaining wall " Bid item.

REINFORCING: All dimensions relative to reinforcing steel shall be to centerline of bar unless otherwise noted. Bar clearances shall be 1 1/2 inches unless otherwise noted. Retaining Walls shall be paid for at the contract unit price bid per Lineal Foot as measured along the exposed face for each type of wall. This payment shall be considered full compensation for all excavation, backfilling, materials, labor, equipment, tools, and incidentals necessary to complete the work. The work shall be performed in accordance with City of Wichita standard specifications.

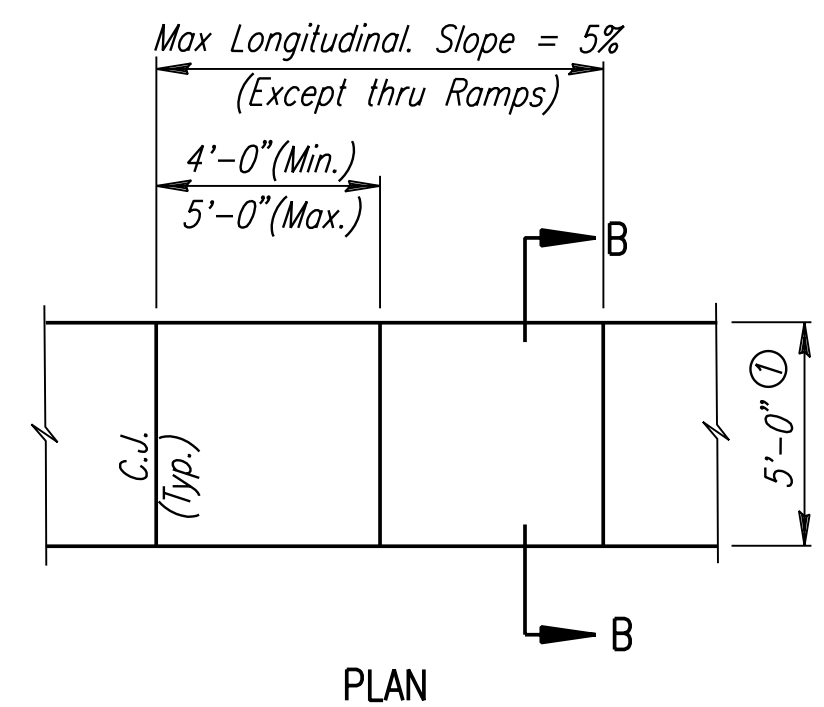


TYPICAL CORNER DETAIL

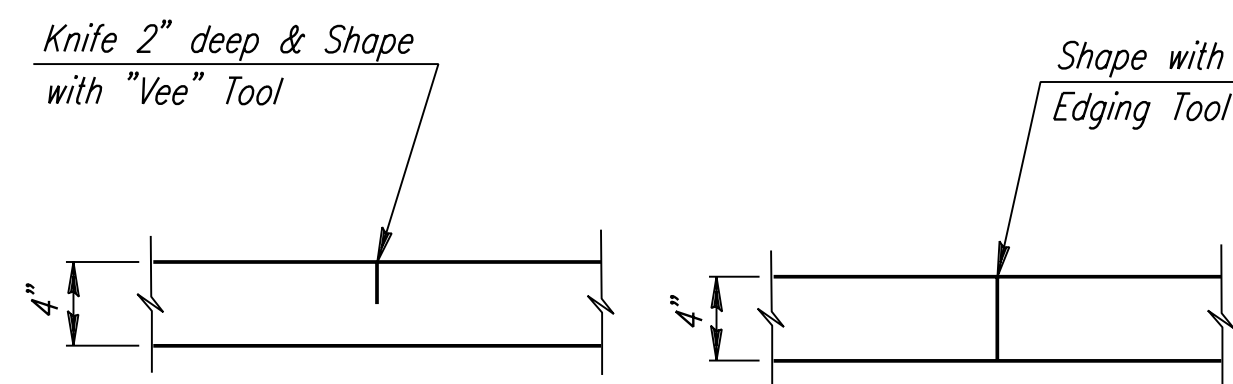
(Plan View)

Retaining Wall			TYPE (I)	TYPE (II)
Road	Side	Sta. to Sta.	Length (L.F.)	Length (L.F.)
Murdock	Rt.	47+95.22 49+31.10	135.88	
Murdock	Lt.	48+95.65 49+09.19	13.54	
Murdock	Lt.	51+21.28 52+10.00	88.72	
Santa Fe	Rt.	114+41.78 114+58.78	17.00	
Central	Rt.	48+38.93 49+22.78		83.85
Central	Lt.	50+92.00 51+92.20	100.20	
Central	Lt.	52+05.15 52+30.00	24.85 **	

\*\* Proposed Wall Surface Shall Match Existing Adjacent Wall Surface

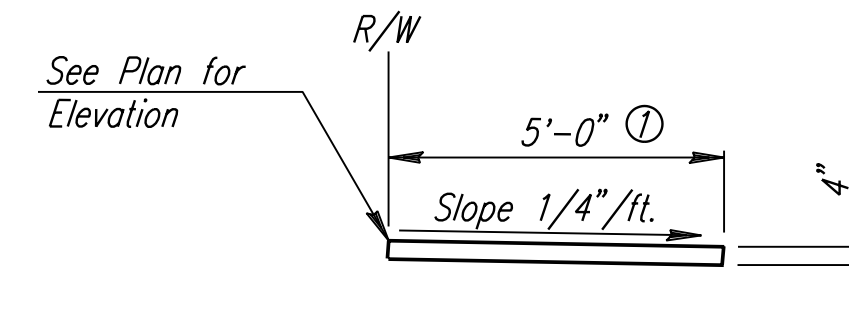


PLAN



CONTRACTION JOINT

CONSTRUCTION JOINT

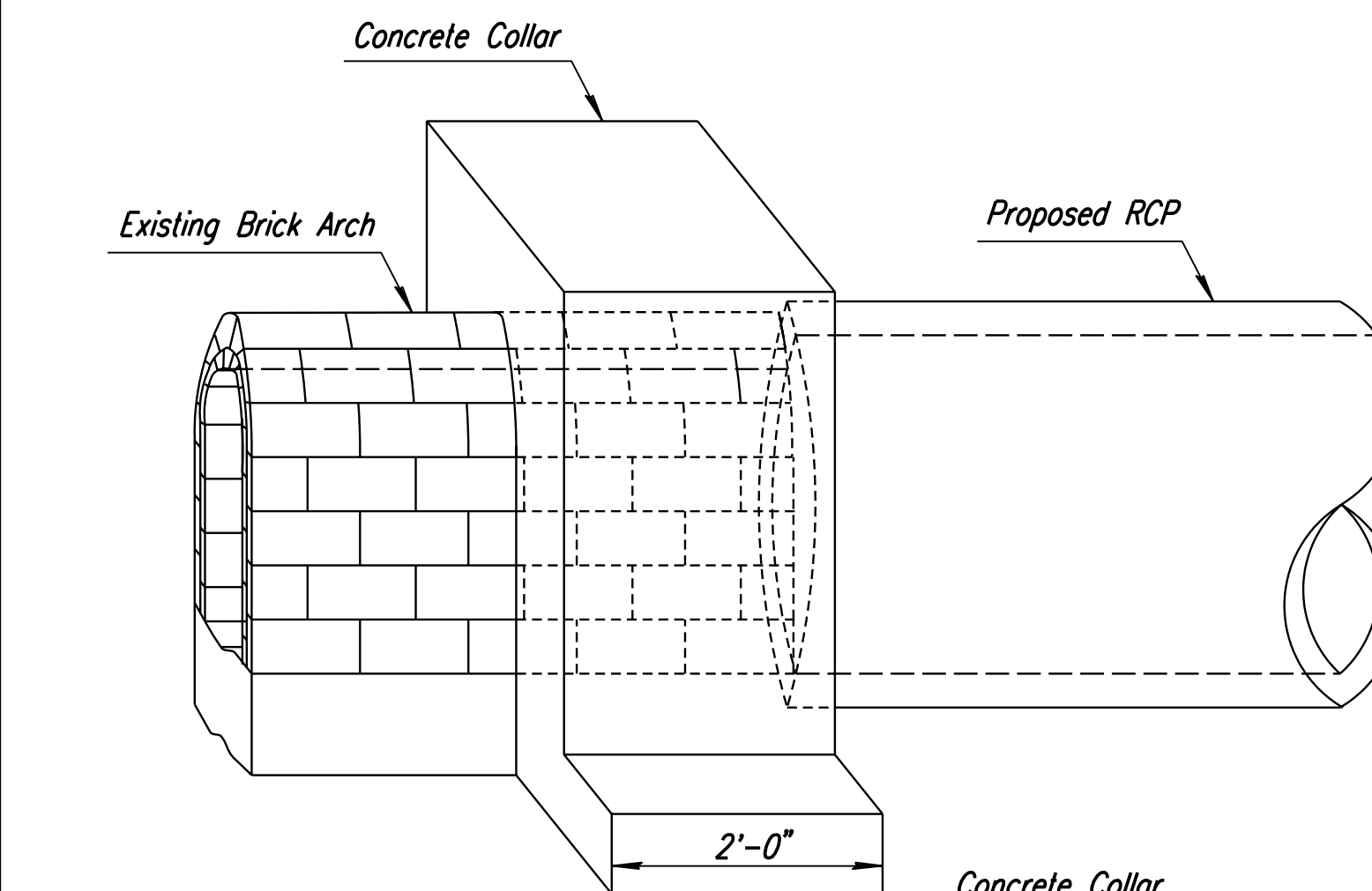


SECTION B-B

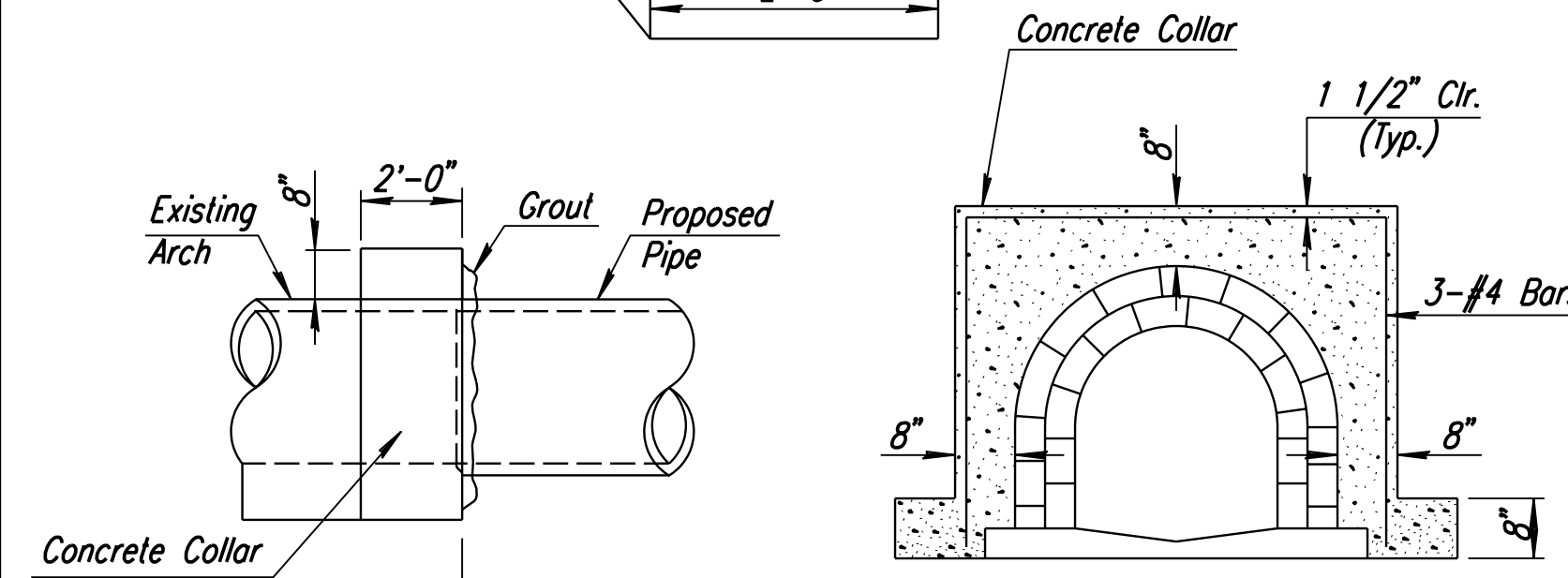
### 4" WALK DETAILS

See Sh. S6.5 for Standard Wheel Chair Ramp Detail 1

⊙ 6'-0" on 13th Street



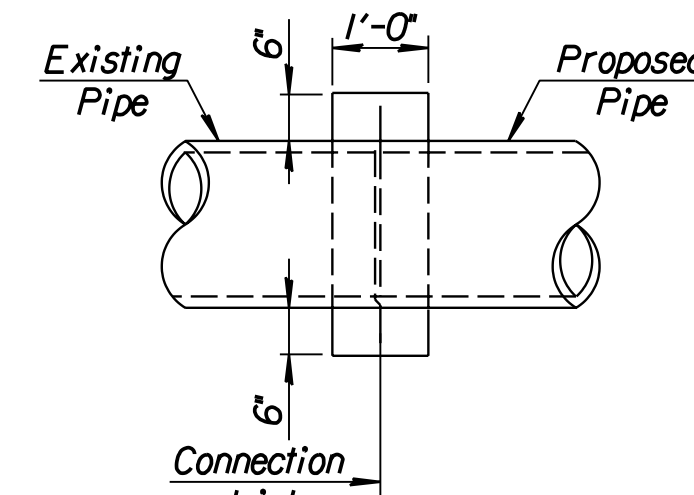
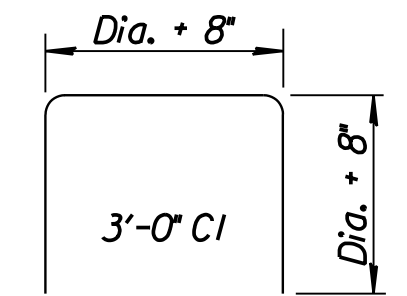
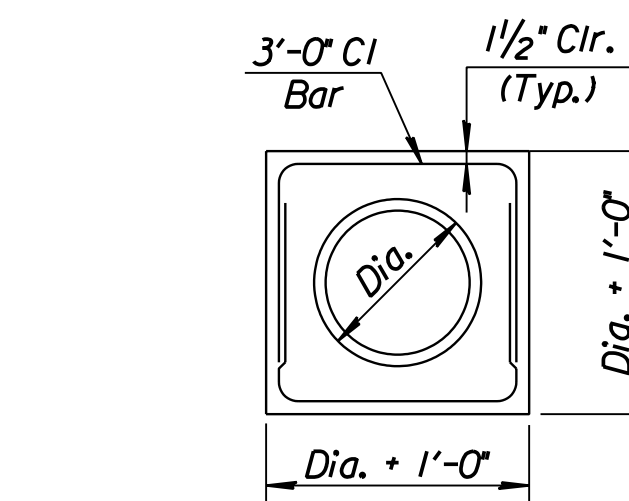
Grout Pipe to Collar. Use a complete Pipe section against Collars. Maintain Bell on Pipe for future connection.



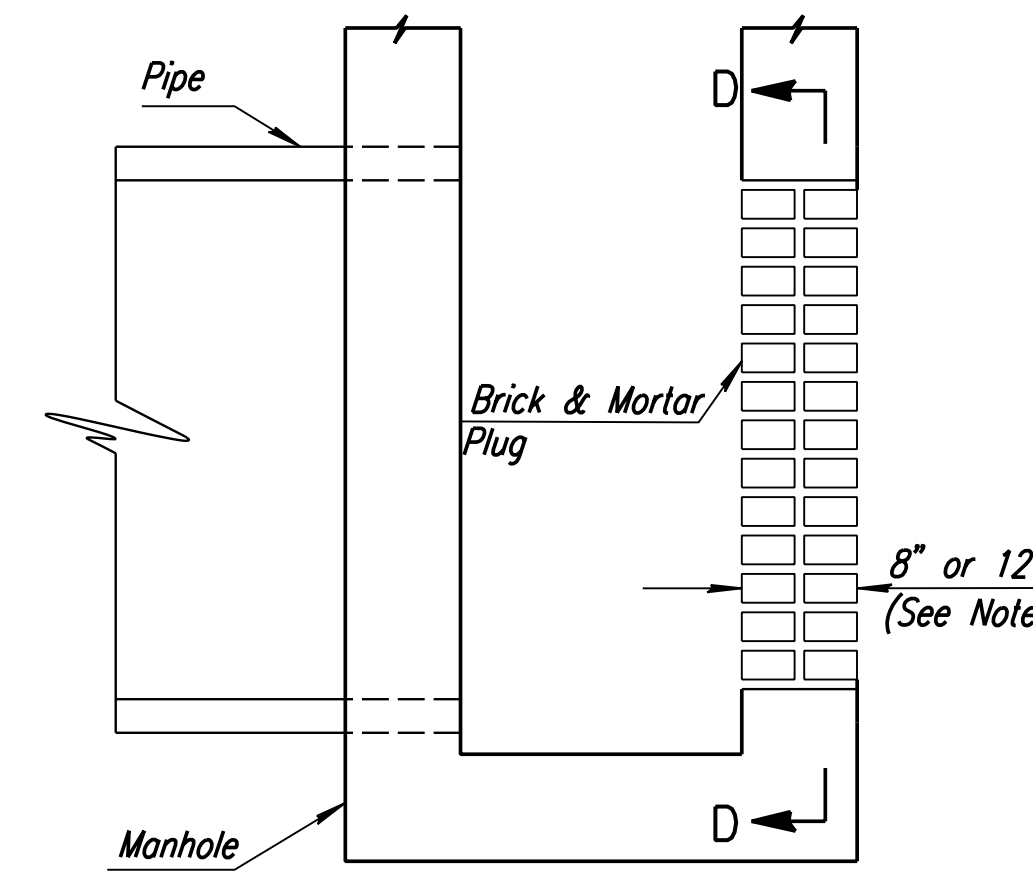
BRICK ARCH to RCP

CONCRETE COLLAR DETAIL

Concrete collars shall be provided at connection to existing conduits where, in the opinion of the Engineer, a collar is required for a satisfactory connection. Class A Concrete or the mix used in concrete pavement shall be used throughout. Concrete collars will not be paid for directly, but shall be considered Subsidiary to the various pipes involved.

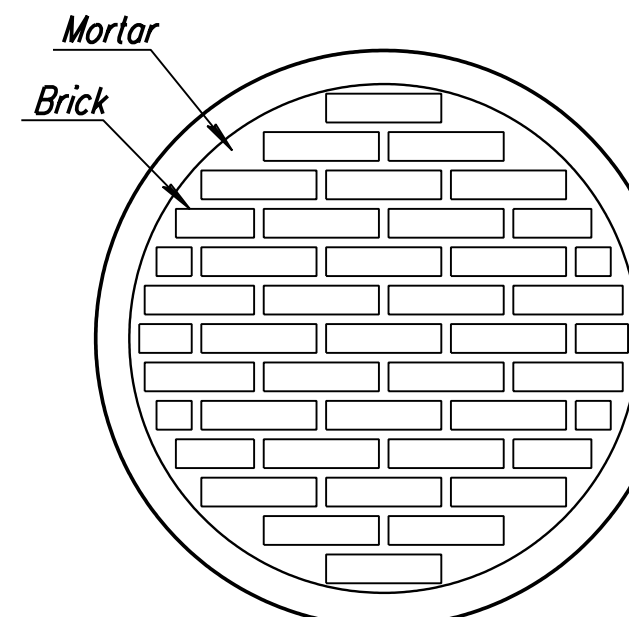


RCP to RCP



PIPE PLUGGING DETAIL

Note: Pipe Plugs shall be constructed of Brick Masonry, with construction requirements and materials conforming to the same requirements as specified for Manhole Construction. Pipes having diameters of 18" or smaller shall be plugged with 8" thick Plugs. Pipes having diameters larger than 18" shall be plugged with 12" thick Plugs. The Construction of Pipe Plugs shall not be paid for directly, but shall be considered Subsidiary to other bid items.



SECTION D-D

		<b>MISCELLANEOUS DETAILS</b>	
CITY ENGINEER'S OFFICE CITY HALL - SEVENTH FLOOR 455 NORTH MAIN STREET WICHITA, KANSAS 67202 (316) 268-4501 (316) 268-4114 FAX		PROJECT NUMBER 472-84071	INDEX CODE 715235
DATE JUNE 2002			

DSNR: RWM OPER: DRP SCALE: 1/1999/99189/BID SET 3/SHEETS/S6.4\_MISC DETAILS.DGN 11-05-2002 11:27:53 LAST REV: 4-22-2003 BY: drp