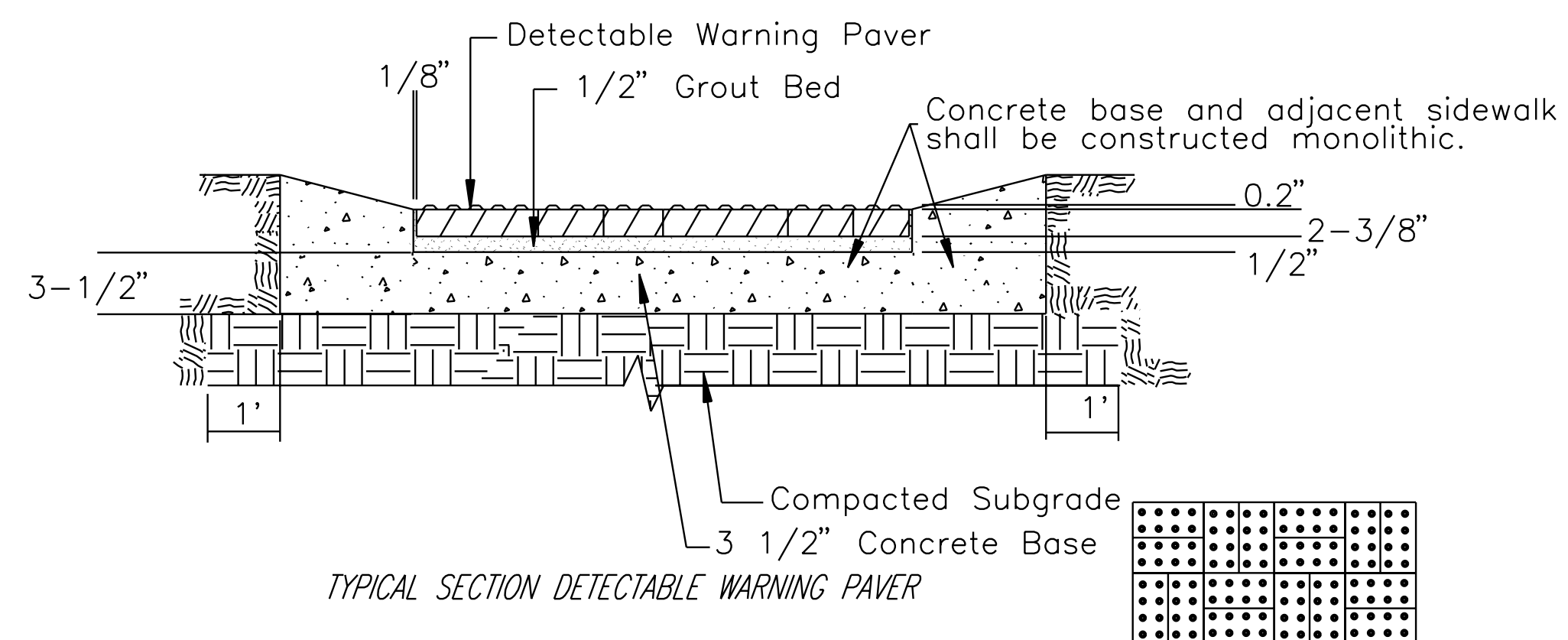
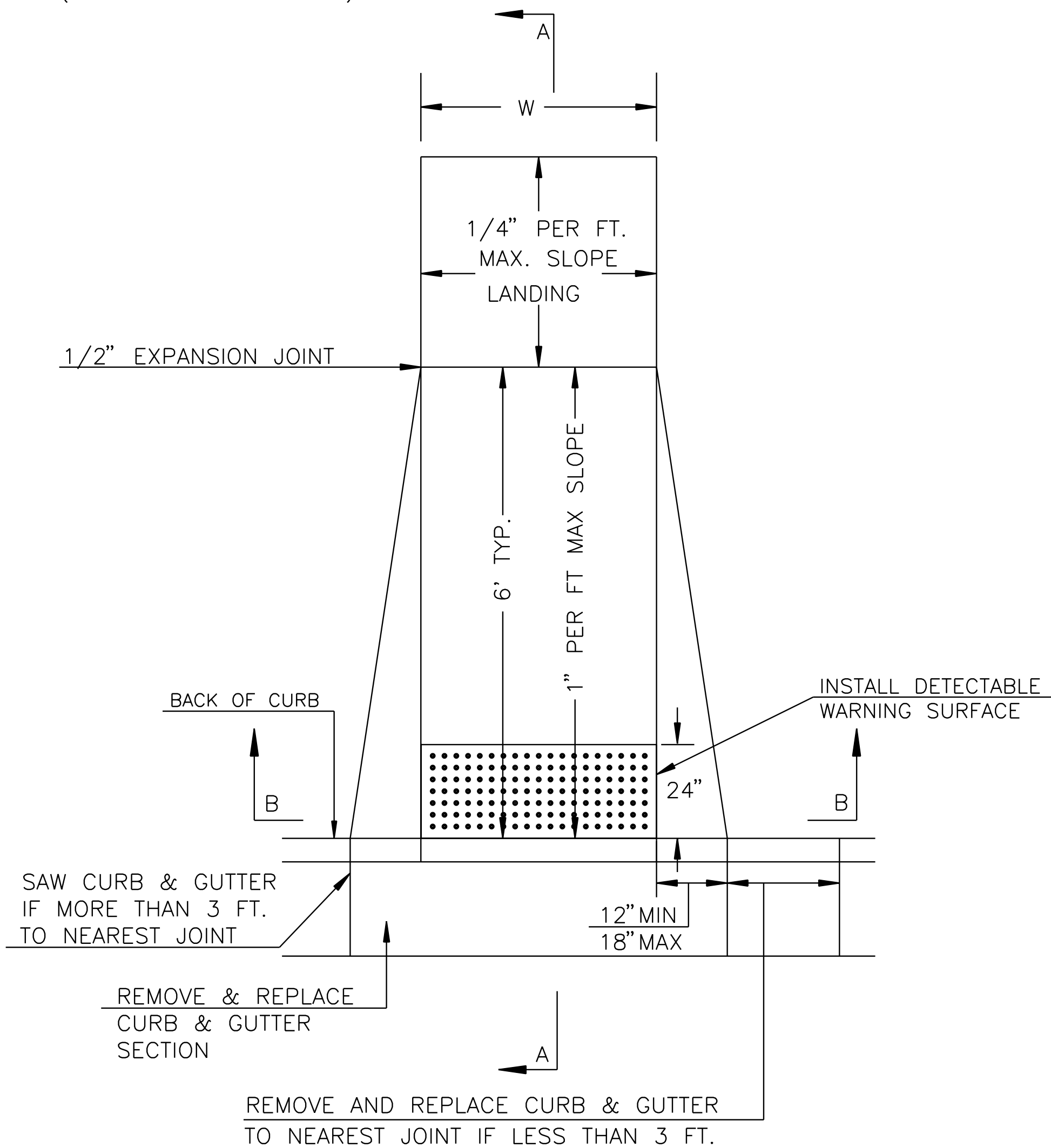


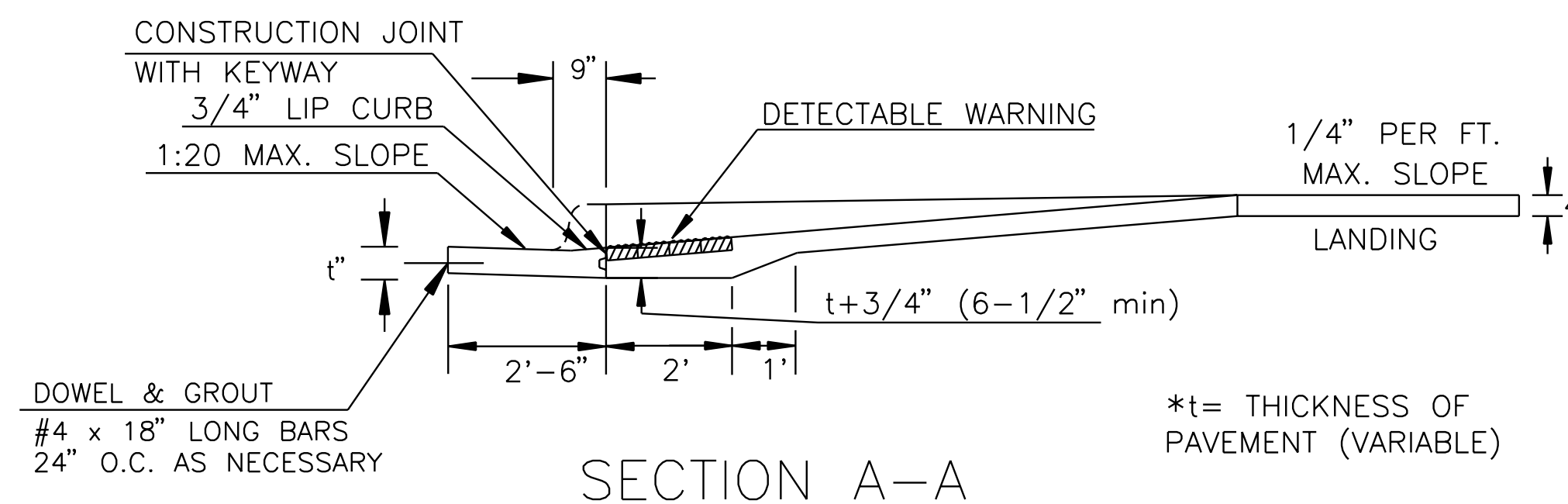
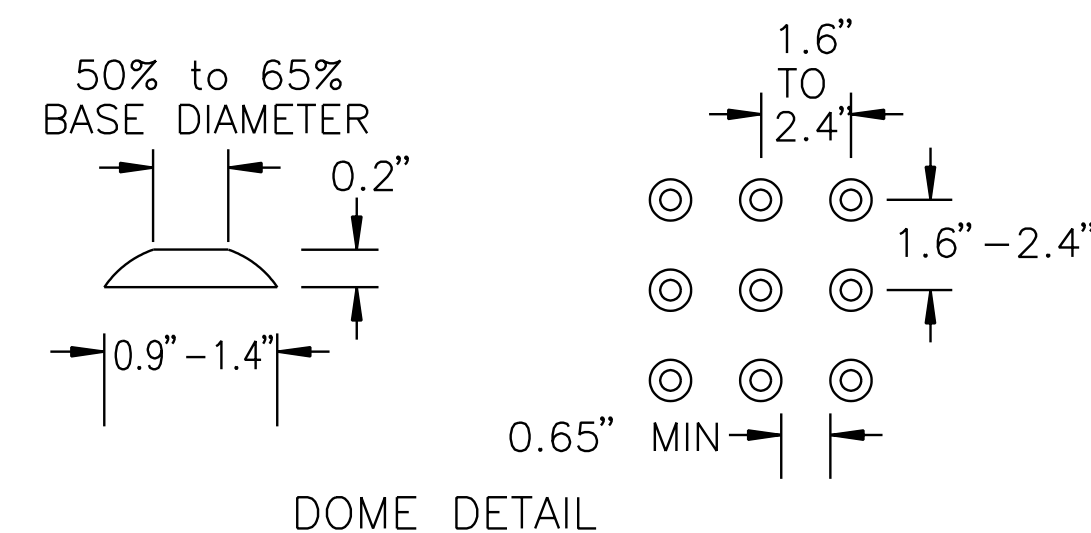
(TYPE A)
 STANDARD WHEELCHAIR RAMP
 WITH DETECTABLE WARNING
 CONSTRUCTION DETAIL FOR STREETS
 WITH COMBINED CURB & GUTTER

W= 4'0" FOR STANDARD RAMP
 W= 5'0" FOR RAMPS AT SCHOOL CROSSWALKS
 (OR TO MATCH EXISTING)



NOTE: RAMPS TO COMPLY WITH LATEST ADAAG GUIDELINES. PAVESTONE DETECTABLE WARNING PAVERS (OR AN APPROVED EQUAL) SHALL BE USED IN ALL WHEELCHAIR RAMPS. THE RED PAVER SHALL BE INSTALLED USING A BASKET WEAVE/PARQUET PATTERN. OTHER PATTERNS MAY BE USED WITH APPROVAL OF ENGINEER. SAND FILL JOINTS. ALIGN DOMES IN THE DIRECTION OF PEDESTRIAN TRAVEL.

SECTION B-B



SECTION A-A

AUGUST 4, 2003

DSNR: CITY OF WICHITA OPER: *URFJ*U SCALE: 1=1.00
 I:1999/99189/Bld Set 3/Sheets/56_5_WCR with Detects.dgn 8-4-2003

		WHEELCHAIR RAMP DETAILS	
		CITY ENGINEER NEIL CABLE, P.E.	
PROJECT NUMBER 472-84071	OCA NUMBER 715235	DATE 07/03	DESIGN City
CITY ENGINEER'S OFFICE CITY HALL - SEVENTH FLOOR 455 NORTH MAIN STREET WICHITA, KANSAS 67202-1620 (316) 268-4501 (316) 268-4114 FAX		DRAWN City	SHEET __ OF __