

@ Central, Sta. 52+27.83, 12.61' Lt. = Sta. 0+00.00  
Existing MH 5548-522  
Install new 24" pipe. Seal new 24" pipe to MH with approved waterstop gasket and quick-set hydraulic cement. Construct a minimum of 3' reinforced concrete encasement from MH wall. Reshape invert to provide smooth flow. This work shall be considered subsidiary to SS Pipe 24"

@ Central, Sta. 51+65.20, 21.44' Lt. = Sta. 0+63.25, SS Line No. 1  
MH 1  
Construct Standard Type "P" Manhole Diameter= 5'  
Top Elev.= 1300.2, Floor Elev.= 1292.86  
See Sheets S9.4 & S9.5

**CAUTION!!!**  
6" Waterline (City of Wichita)  
Contractor shall verify depth & location of existing waterline at proposed sanitary sewer crossing. Adjust as necessary to get waterline above sanitary sewer (1' clear min.).

@ Central, Sta. 49+67.00, 21.52' Lt. = Sta. 2+61.45, SS Line No. 1  
MH 2  
Construct Standard Type "P" Manhole Diameter= 5'  
Top Elev.= 1299.9, Floor Elev.= 1292.99  
See Sheets S9.4 & S9.5

**CAUTION!!!**  
20" C.I. Waterline (City of Wichita) to be abandoned  
1 1/4" Gas Main (Aquila Network)

@ Central, Sta. 49+48.65 45.24' Lt. = Sta. 2+91.44, SS Line No. 1  
Existing MH 5548-524  
Remove & replace existing MH.  
MH 3  
Construct Standard Type "P" Manhole Diameter= 5'  
Top Elev.= 1300.0, Floor Elev.= 1293.24  
See Sheets S9.4 & S9.5

@ Central, Sta. 49+49.07, 120.24' Lt. = Sta. 3+66.44, SS Line No. 1  
MH 4  
Construct Standard Type "P" Manhole over existing 24" VCP pipe. \* Diameter= 5'  
Top Elev.= 1301.4, Floor Elev.= 1293.25  
Remove 24" VCP pipe thru MH. Shape invert to provide smooth flow.  
See Sheets S9.4 & S9.5

Remove Existing 20" Waterline as needed to construct Sanitary Sewer. Cap any open ends that will remain in the ground. See sheet S10.1 for cap or plug locations and the extents of the existing waterline to be abandoned.

Remove and replace 63 L.F. Concrete pavement.

Install 63.25 L.F. Excavatable-Flowable Fill to Elev. 1297.8  
Sand fill, flood, and vibrate

Install 63.25 L.F. SS Pipe 24"

Note: Connected 6" Sanitary Sewer service line from Hiland Dairy  
Sta. 1+05 to Sta. 1+26  
Construct 21 L.F. Reinforced Concrete Encasement on 24" Pipe. 10' (min.) each way from crossing.

Install 120.75 L.F. Excavatable-Flowable Fill to Elev. 1298.1  
Sand fill, flood, and vibrate

Remove and replace 121 L.F. Concrete pavement.

Not installed  
Sta. 1+94 to Sta. 2+59  
Install 75 L.F. Steel Casing Bored & Jacked. (36" ID-min.)

Install 29.99 L.F. Excavatable-Flowable Fill to Elev. 1297.9  
Sand fill, flood, and vibrate

Install 29.99 L.F. SS Pipe 24"

Remove and replace 30 L.F. Concrete pavement.

Remove and replace 73 L.F. Concrete pavement.

Install 75.00 L.F. Excavatable-Flowable Fill to Elev. 1298.0  
Sand fill, flood, and vibrate

\* PRIOR TO BEGINNING CONSTRUCTION, THE CONTRACTOR SHALL EXCAVATE THE EXISTING 24" VCP AT SANITARY SEWER STATION 3+71.11 TO VERIFY ITS HORIZONTAL AND VERTICAL LOCATION. THE PIPE LOCATION SHALL BE REPORTED TO THE ENGINEER SO THAT ANY NECESSARY PLAN MODIFICATIONS CAN BE MADE. ANY ADDITIONAL LABOR OR MATERIALS NECESSARY TO COMPLETE THE CONNECTION SHALL BE CONSIDERED SUBSIDIARY TO THE PROJECT.

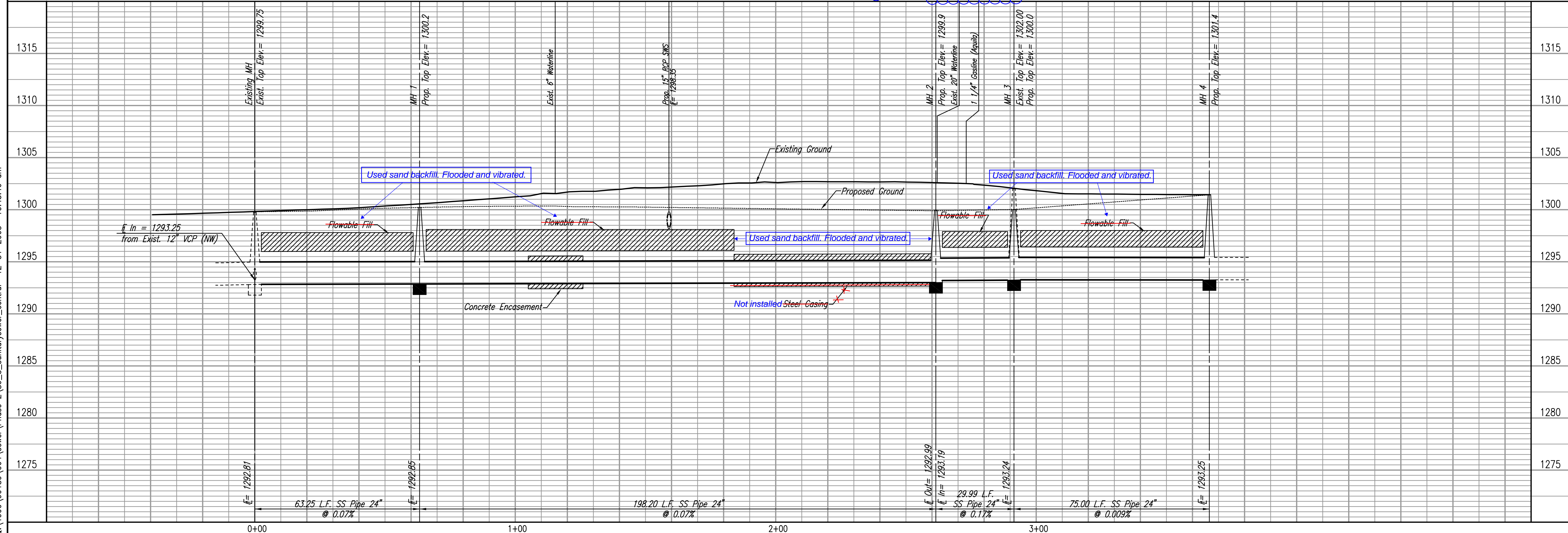
SANITARY SEWER LINE NO. 1

□ - Denotes Caps or Plugs to be Installed  
X - Denotes Sanitary Sewer to be Abandoned.

DATE	
BY	
CHECKED	
CHECKED	
PLAN	

DATE	
BY	
CHECKED	
CHECKED	
PROFILE	

DSNR: MDK OPER: JLM SCALE: 1=20.00  
Q:\1999\99189\004\sewer\Phase 2\S9\_3\_sanitarysewer\_central 12-31-2003 10:43:46 am



CITY OF WICHITA, KANSAS  
NEIL D. CABLE, P.E. - CITY ENGINEER  
CENTRAL RAIL CORRIDOR  
**SANITARY SEWER PLAN**  
CENTRAL AVENUE  
LINE NO. 1  
CITY OF WICHITA PROJECT NO. 472-84071

Professional Engineering Consultants, P.A.  
303 S. TOPEKA • WICHITA, KANSAS 67202  
316-262-2691 • FAX 316-262-3003

Designed By: MDK  
Drawn By: GJR, JLM  
Job No.: 34-99189-4  
Date: September, 2002

Sheet S9.3 of

