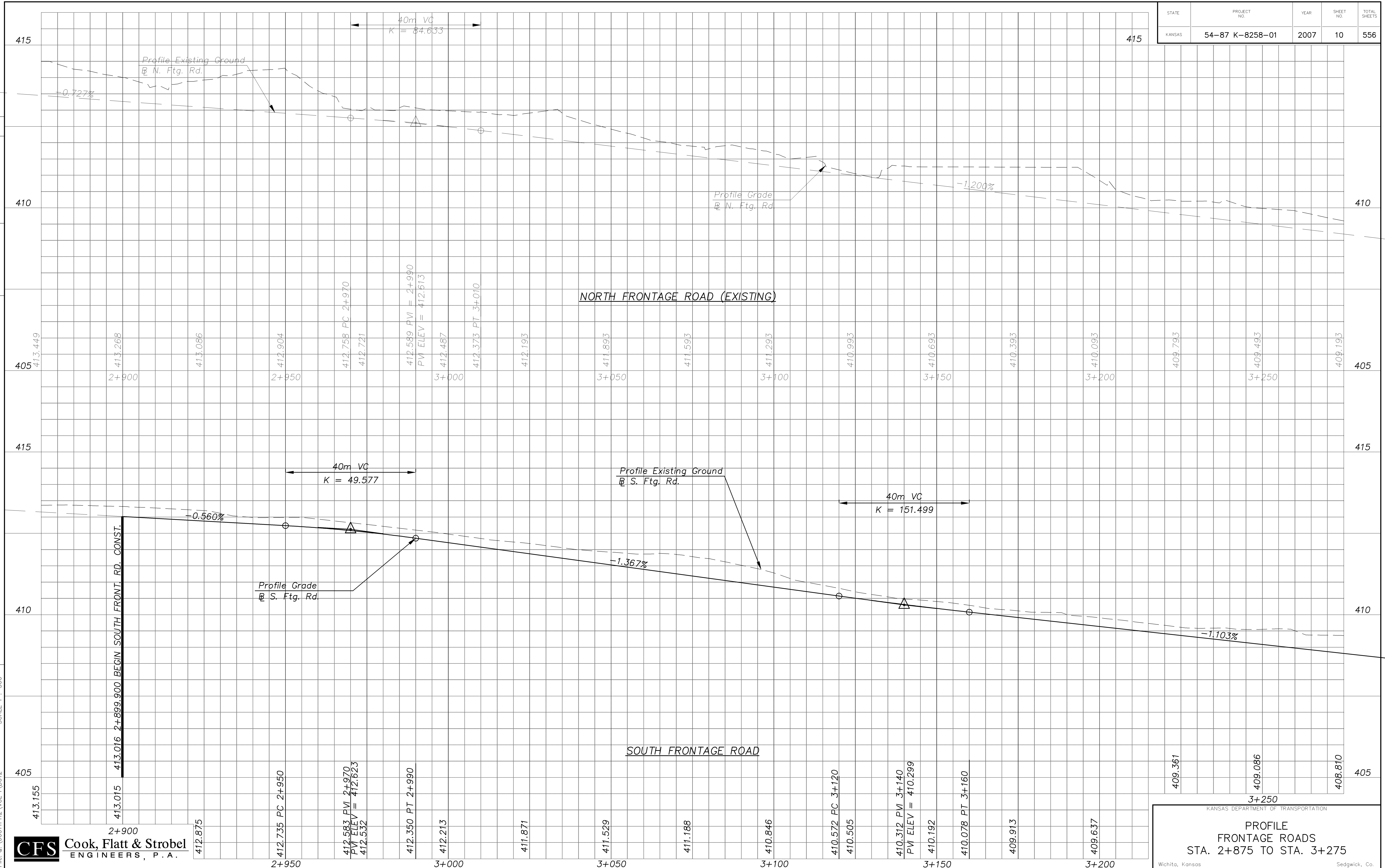


|        |                 |      |           |              |
|--------|-----------------|------|-----------|--------------|
| STATE  | PROJECT NO.     | YEAR | SHEET NO. | TOTAL SHEETS |
| KANSAS | 54-87 K-8258-01 | 2007 | 10        | 556          |

|                   |      |
|-------------------|------|
| BY                | DATE |
|                   |      |
| REFERENCE NOTED   |      |
| REFERENCE CHECKED |      |



**CFS** Cook, Flatt & Strobel  
ENGINEERS, P.A.

KANSAS DEPARTMENT OF TRANSPORTATION  
Wichita, Kansas

**PROFILE FRONTAGE ROADS**  
STA. 2+875 TO STA. 3+275

Sedgwick, Co.