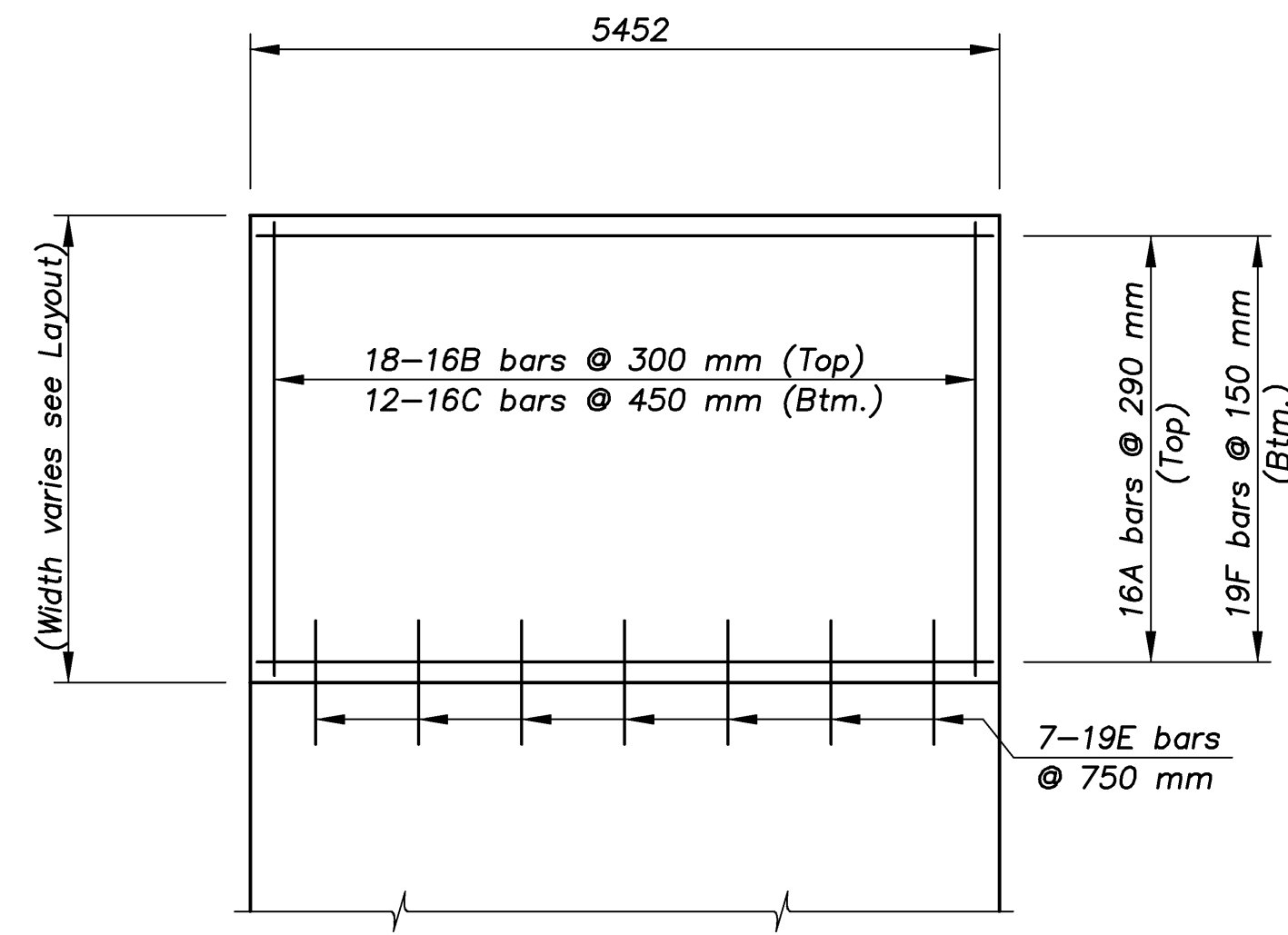
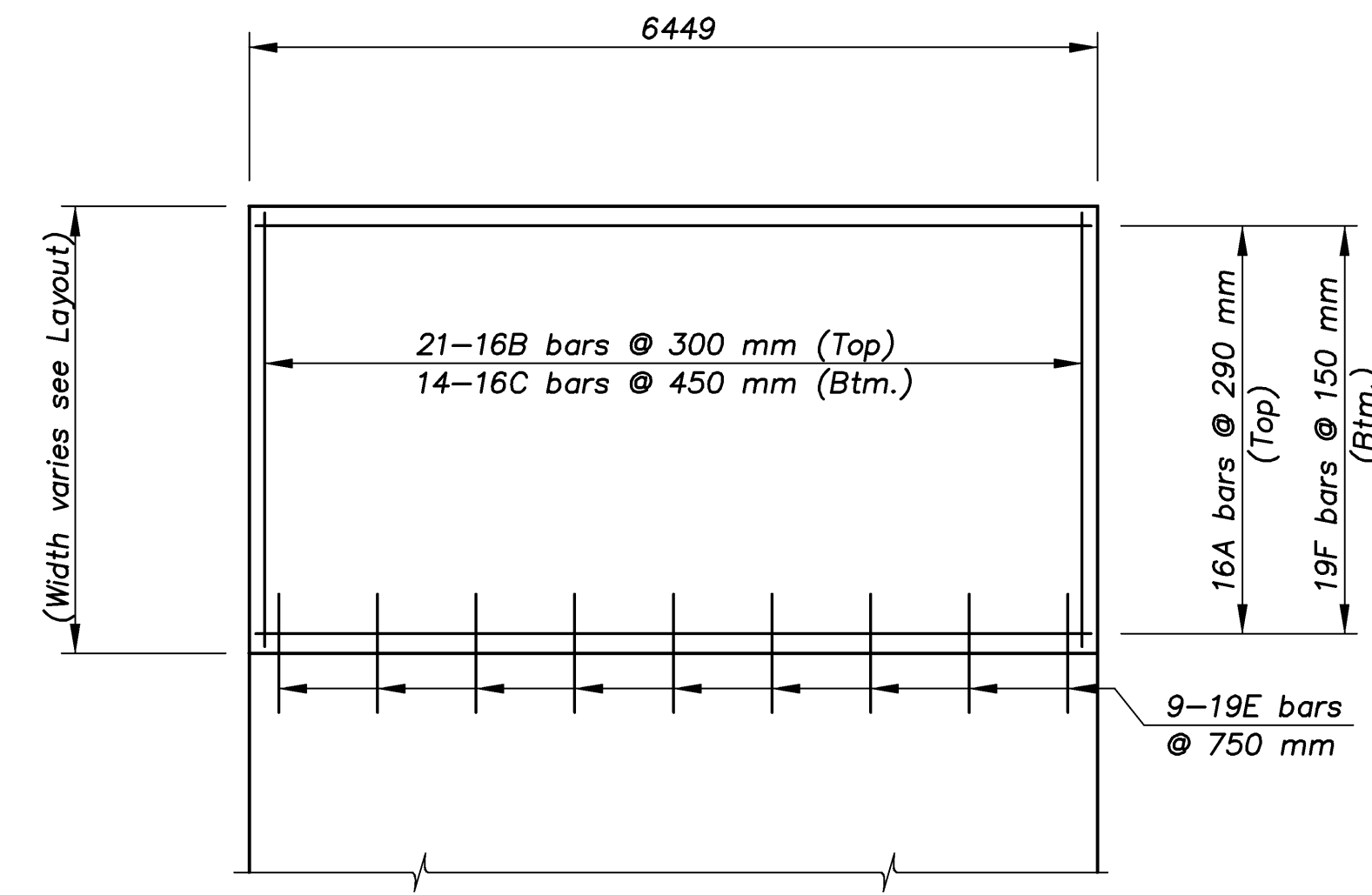


E.F. INDICATES EACH FACE.
 N.F. INDICATES NEAR FACE.
 F.F. INDICATES FAR FACE.

STATE	PROJECT NO.	YEAR	SHEET NO.	TOTAL SHEETS
KANSAS	54-87 K-8258-01	2007	70	556

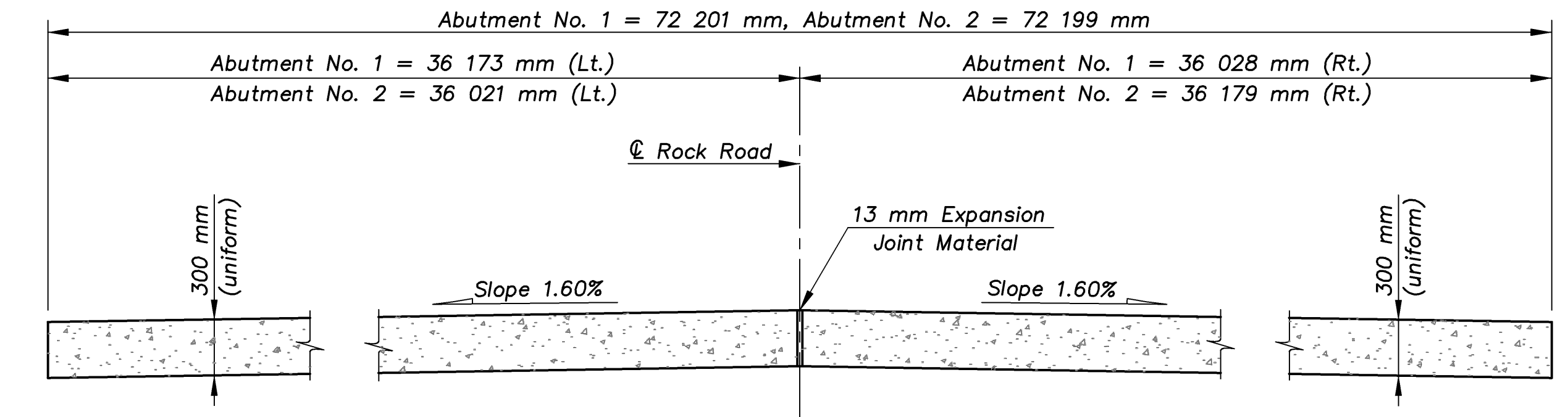


ABUTMENT NO. 1 APPROACH SLAB



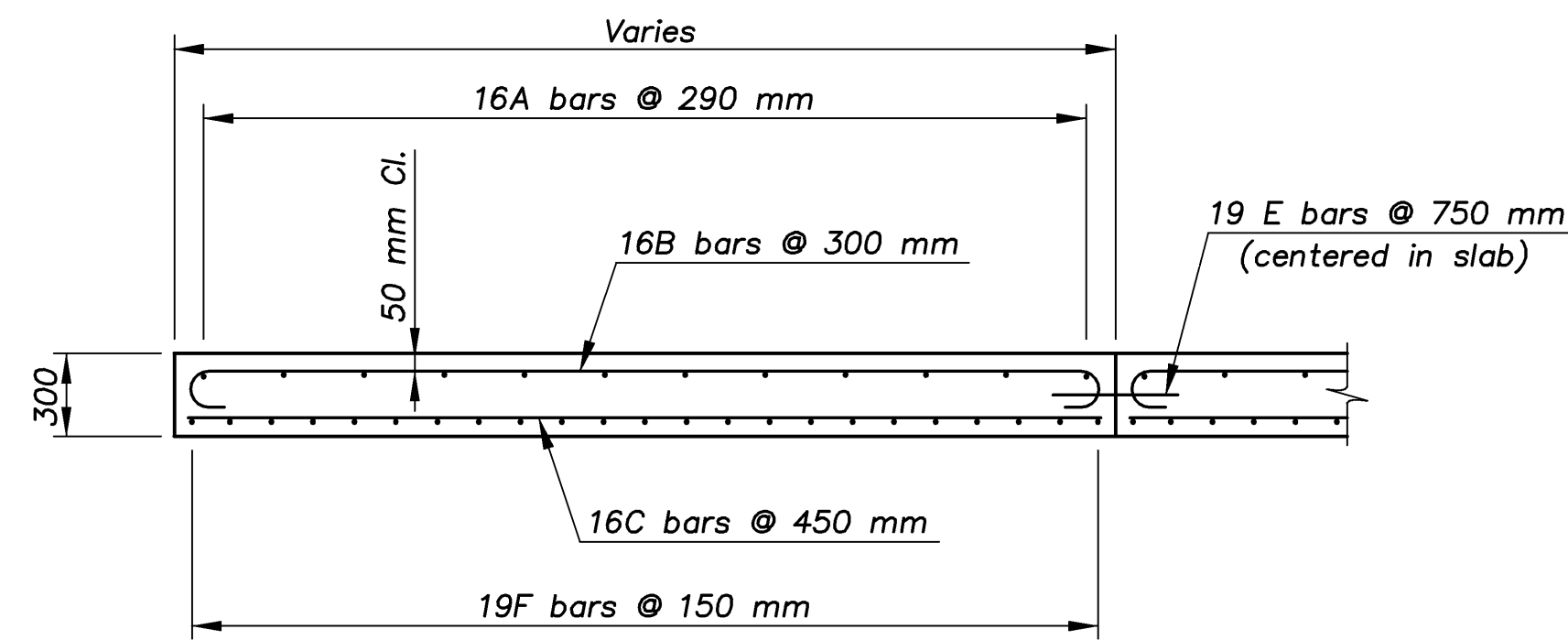
ABUTMENT NO. 2 APPROACH SLAB

PARTIAL PLAN SHOWING APPROACH SLAB REINFORCEMENT



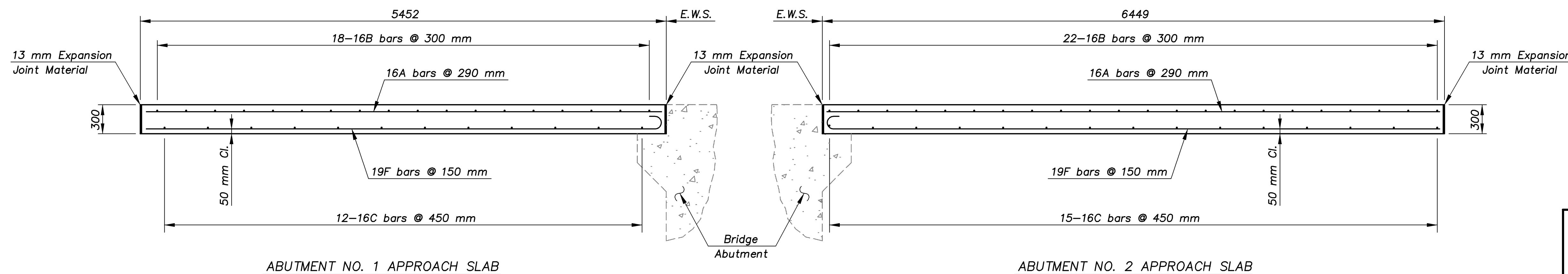
TYPICAL TRANSVERSE SECTION

NOTE: In the longitudinal joint at the the centerline of Rock Road install 13 mm Expansion Joint Material and use a 19 mm dia smooth bars in lieu of 19E1 bars at 750 mm centers. The 19E2 (smooth bars) shall be 900 mm long, epoxy coated and greased.



PARTIAL TRANSVERSE SECTION

		TABLE OF REINFORCING STEEL PER UNIT				
UNIT DIMENSION	UNITS REQ'D.	TOP REINFORCEMENT		BOTTOM REINFORCEMENT		
		Transverse Bars @ 300 mm ctrs.	Longitudinal Bars @ 290 mm ctrs.	Transverse Bars @ 450 mm ctrs.	Longitudinal Bars @ 150 mm ctrs.	
Abutment No. 1	3900 x 5452 mm	2	18-16B1	14-16A1	12-16C1	26-19F1
	3400 x 5452 mm	16	18-16B2	12-16A1	12-16C2	23-19F1
	3136 x 5452 mm	1	18-16B3	11-16A1	12-16C3	21-19F1
	3010 x 5452 mm	1	18-16B4	11-16A1	12-16C4	20-19F1
	1937 x 5452 mm	1	18-16B5	7-16A1	12-16C5	13-19F1
Abutment No. 2	3900 x 6449 mm	2	22-16B1	14-16A2	15-16C1	26-19F2
	3400 x 6449 mm	16	22-16B2	12-16A2	15-16C2	23-19F2
	3141 x 6449 mm	1	22-16B3	11-16A2	15-16C3	21-19F2
	3003 x 6449 mm	1	22-16B4	11-16A2	15-16C4	20-19F2
	1937 x 6449 mm	1	22-16B5	7-16A2	15-16C5	13-19F2



ABUTMENT NO. 1 APPROACH SLAB

ABUTMENT NO. 2 APPROACH SLAB

LONGITUDINAL SECTIONS THRU APPROACH SLABS

ROCK/APPROACH 1:100

KANSAS DEPARTMENT OF TRANSPORTATION		CFS	
BR. NO. 54-87-31.12(702)	STA. 3+877.518	Cook, Flatt & Strobel ENGINEERS, P. A.	
SPECIAL CONCRETE APPROACH PAVEMENT		DESIGNED R.S.C.	SCALE
ROCK ROAD OVER KELLOGG AVENUE		DETAILED T.R.G.	DATE
Proj. No. 54-87 K-8258-01	SEDGWICK COUNTY	QUANTITIES T.R.G.	SHEET 3 OF 5