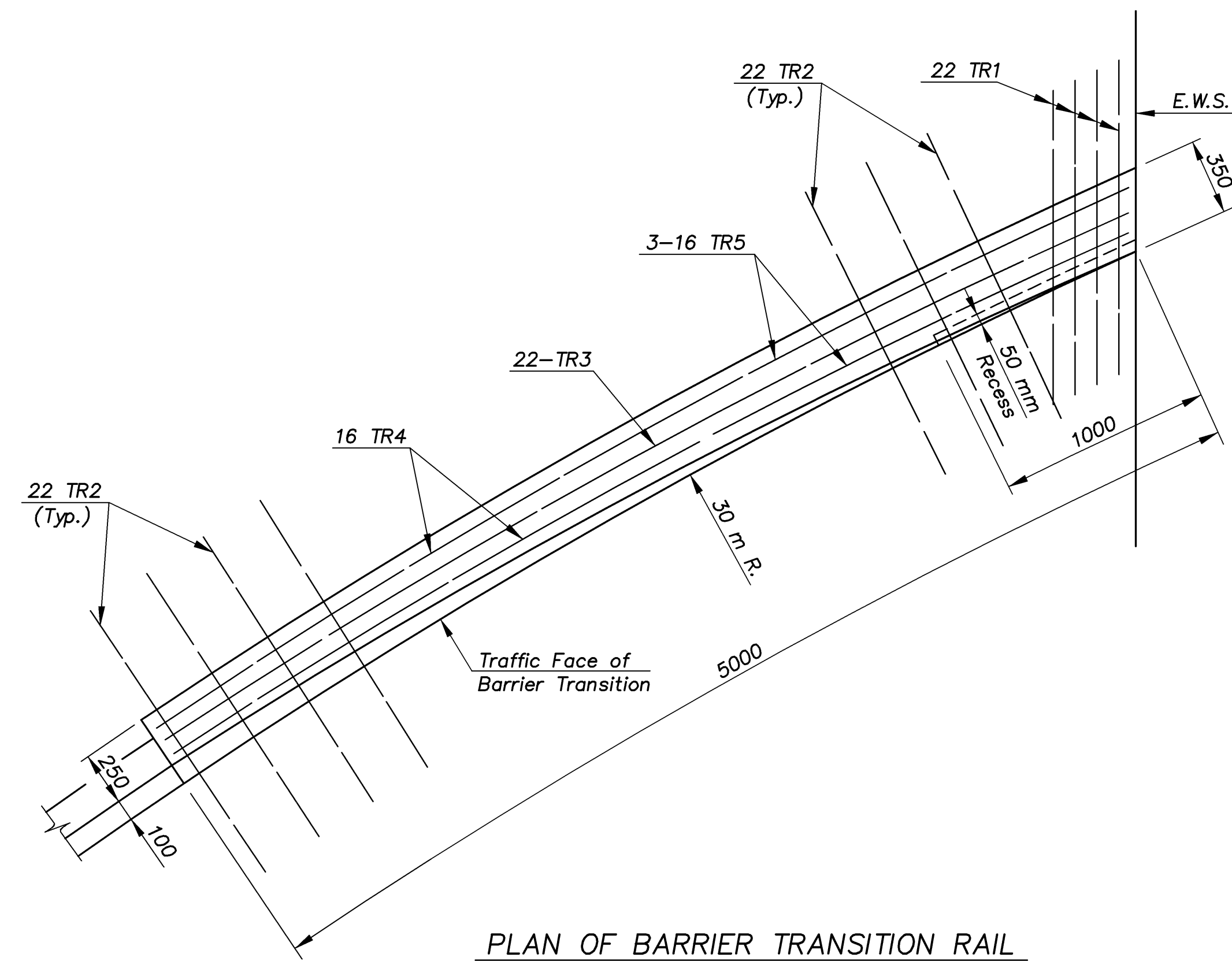
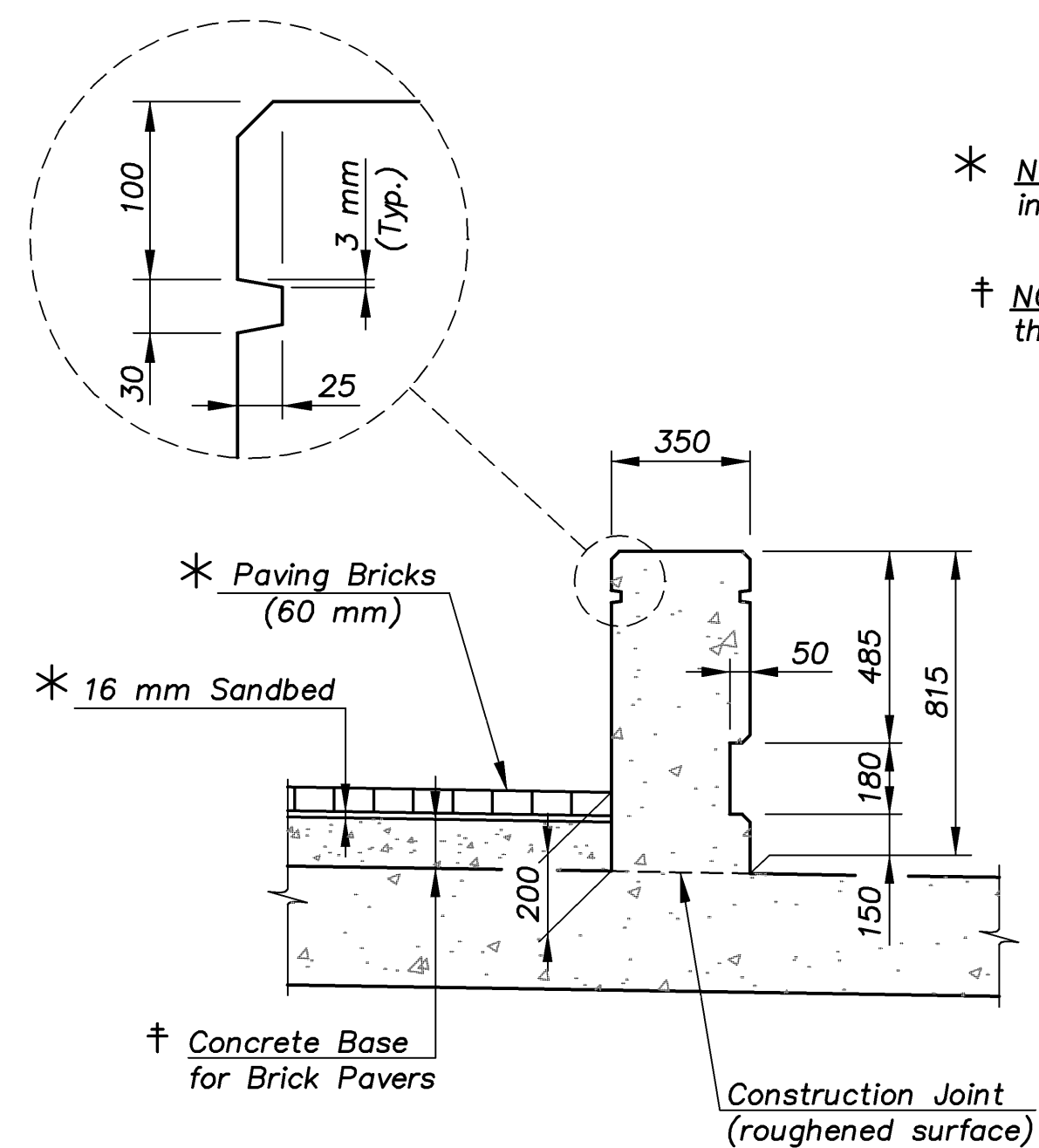


E.F. INDICATES EACH FACE.
 N.F. INDICATES NEAR FACE.
 F.F. INDICATES FAR FACE.

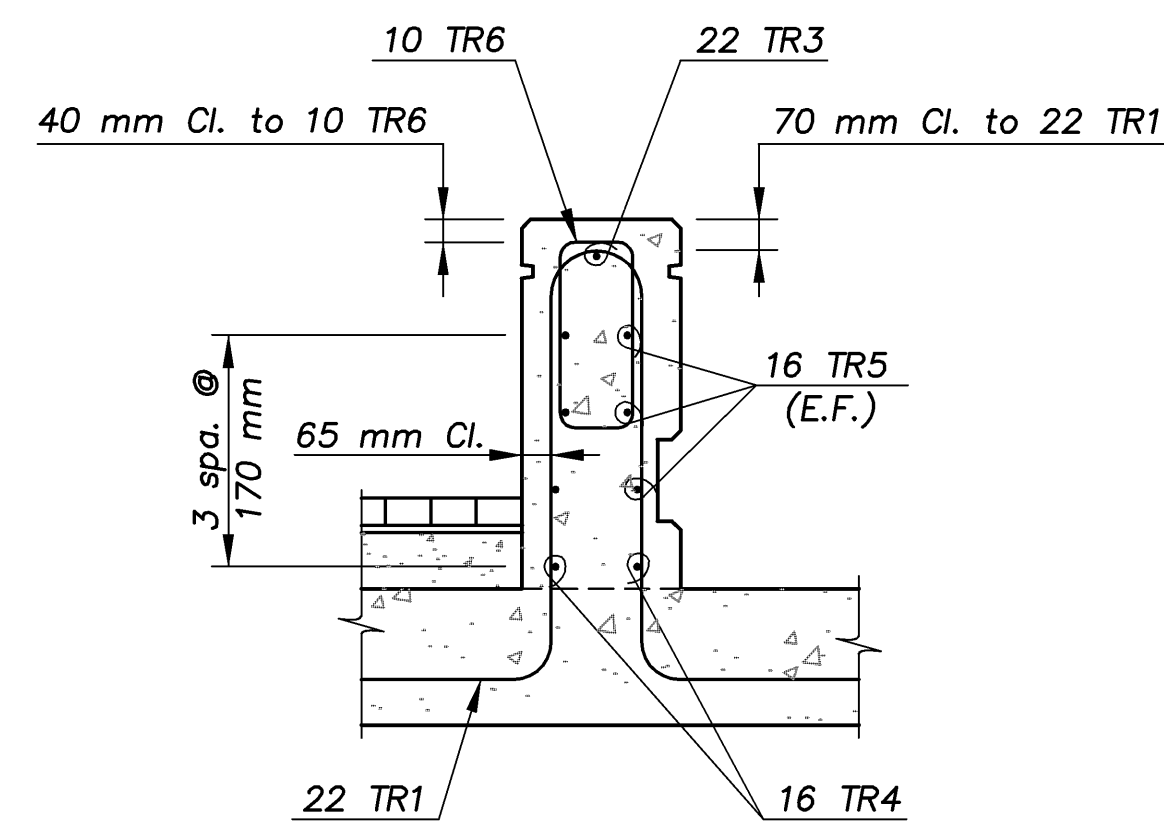
STATE	PROJECT NO.	YEAR	SHEET NO.	TOTAL SHEETS
KANSAS	54-87 K-8258-01	2007	71	556



PLAN OF BARRIER TRANSITION RAIL

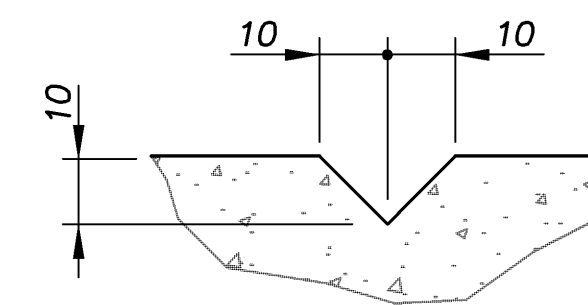


SECTION A-A
 (Without Reinforcing Steel)

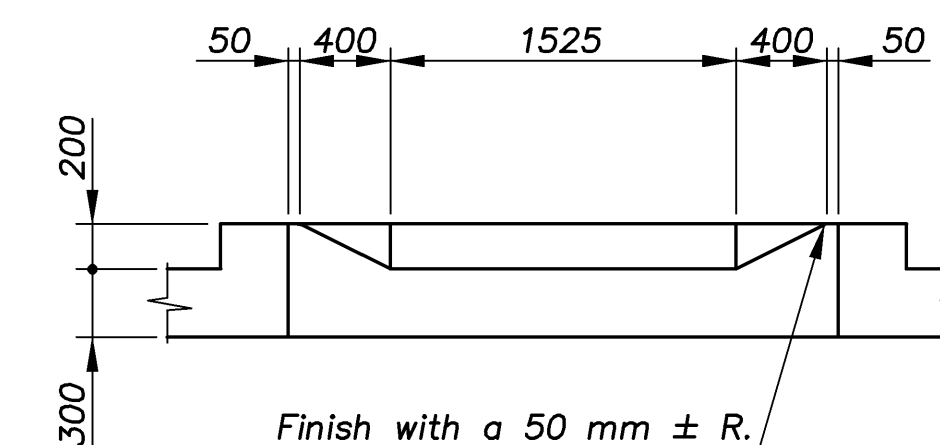


SECTION A-A
 (With Reinforcing Steel)

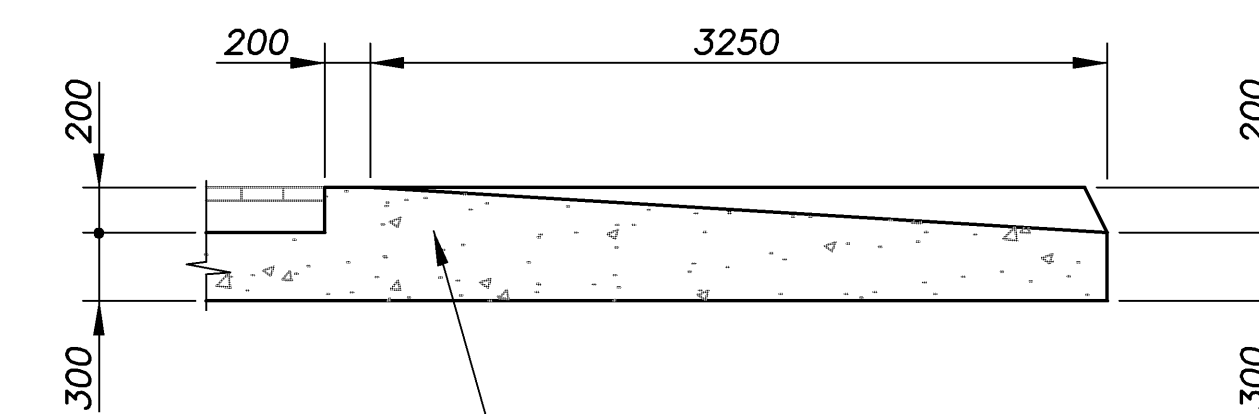
* NOTE: Paving Bricks and 16 mm Sandbed shall be included in the Roadway Quantities for payment.
 † NOTE: Concrete Base for Brick Pavers is included in the Concrete (Grade 31) (AE) Quantities for payment.



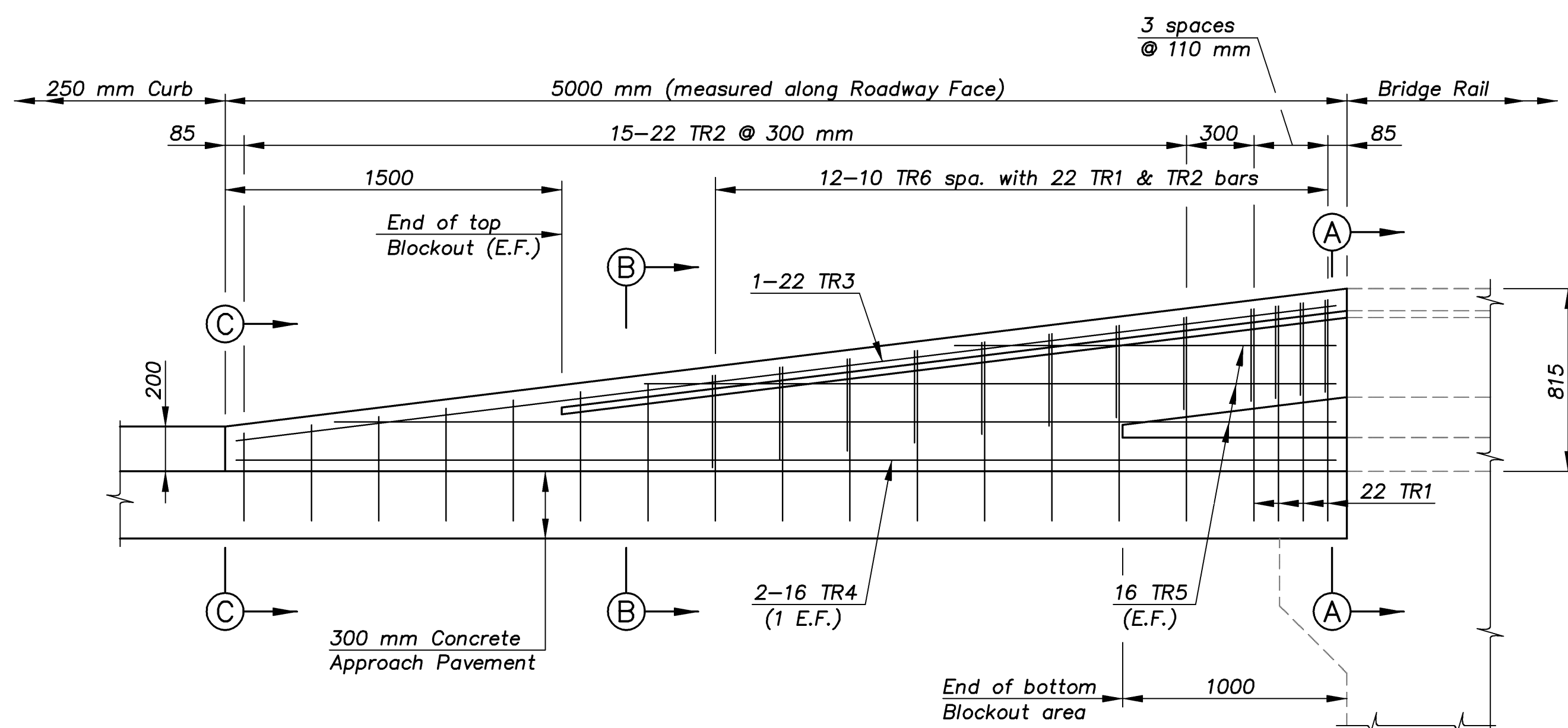
GROOVE DETAIL



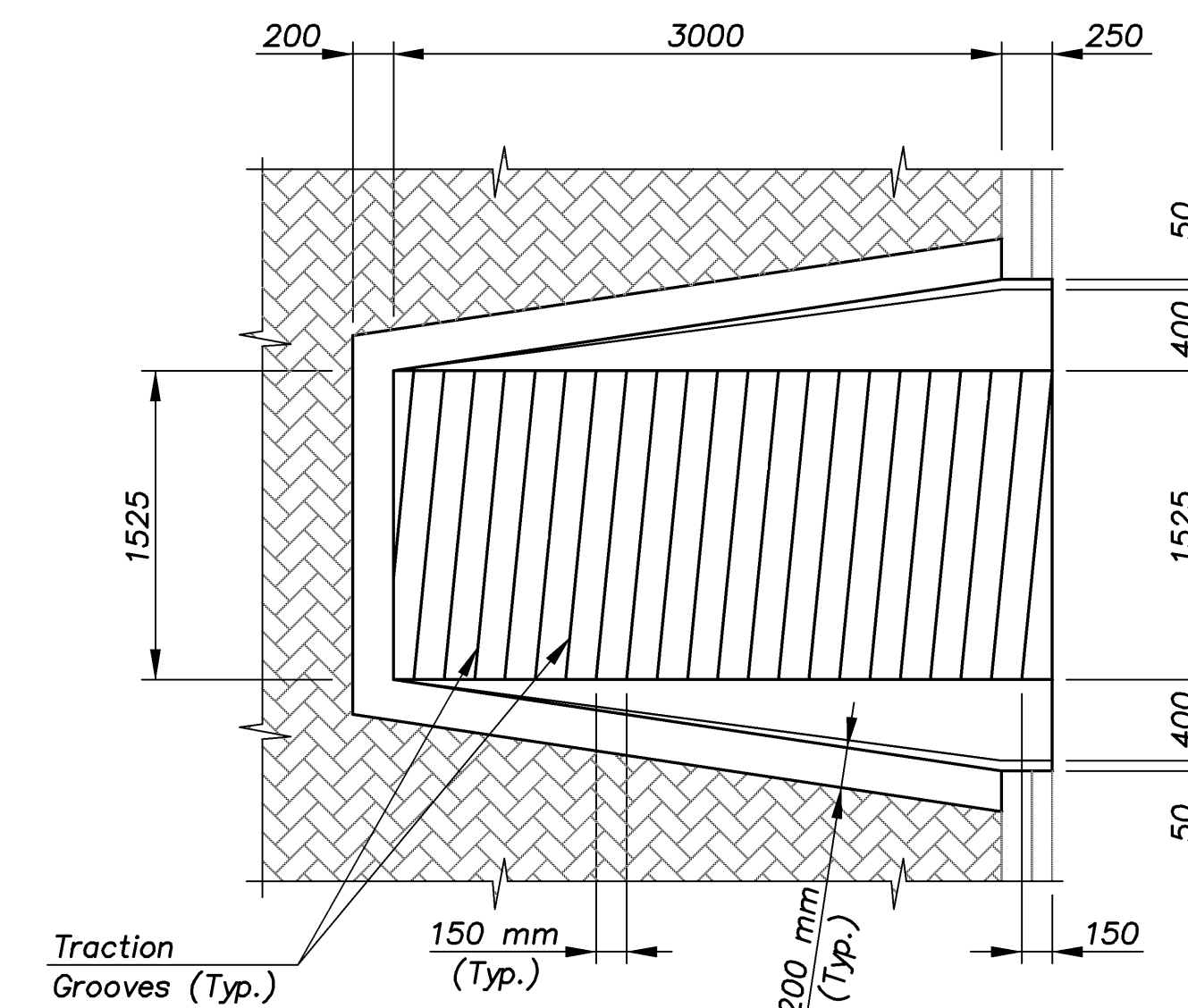
END ELEVATION



TYPICAL SECTION

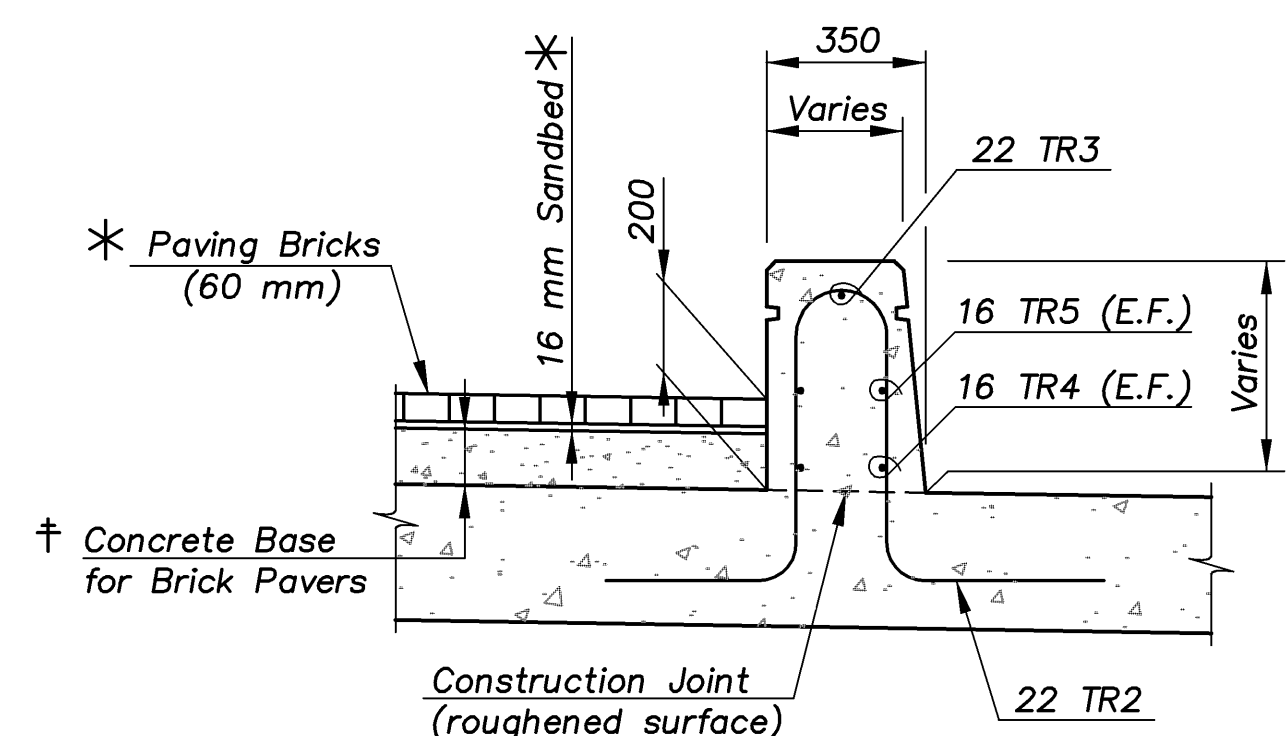


DEVELOPED ELEVATION OF BARRIER TRANSITION RAIL

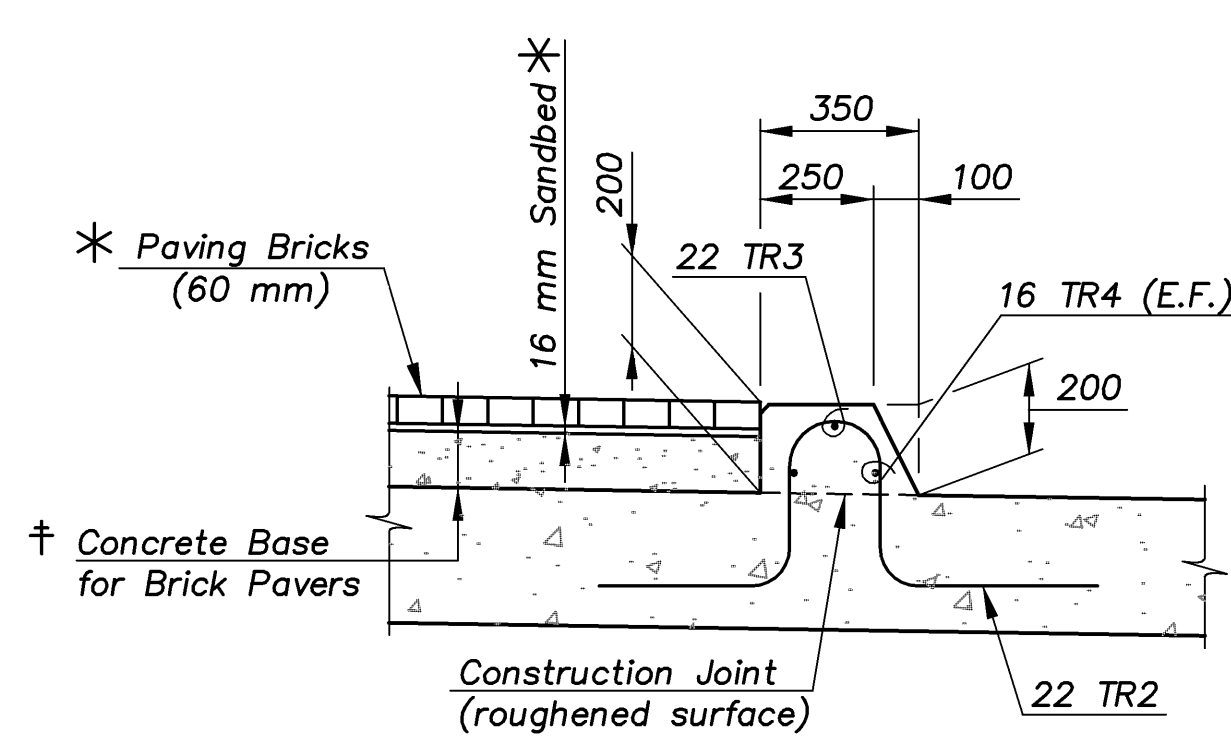


PLAN VIEW

WHEELCHAIR RAMP DETAILS



SECTION B-B



SECTION C-C

1:100
 ROCK/APPROACH

KANSAS DEPARTMENT OF TRANSPORTATION	
BR. NO. 54-87-31.12(702)	STA. 3+877.518
SPECIAL CONCRETE APPROACH PAVEMENT	
ROCK ROAD OVER KELLOGG AVENUE	
Proj. No. 54-87 K-8258-01	SEDGWICK COUNTY



Cook, Flatt & Strobel
 ENGINEERS, P. A.

DESIGNED	R.S.C.	SCALE
DATE	T.R.G.	DATE
QUANTITIES	T.R.G.	SHEET 4 OF 5