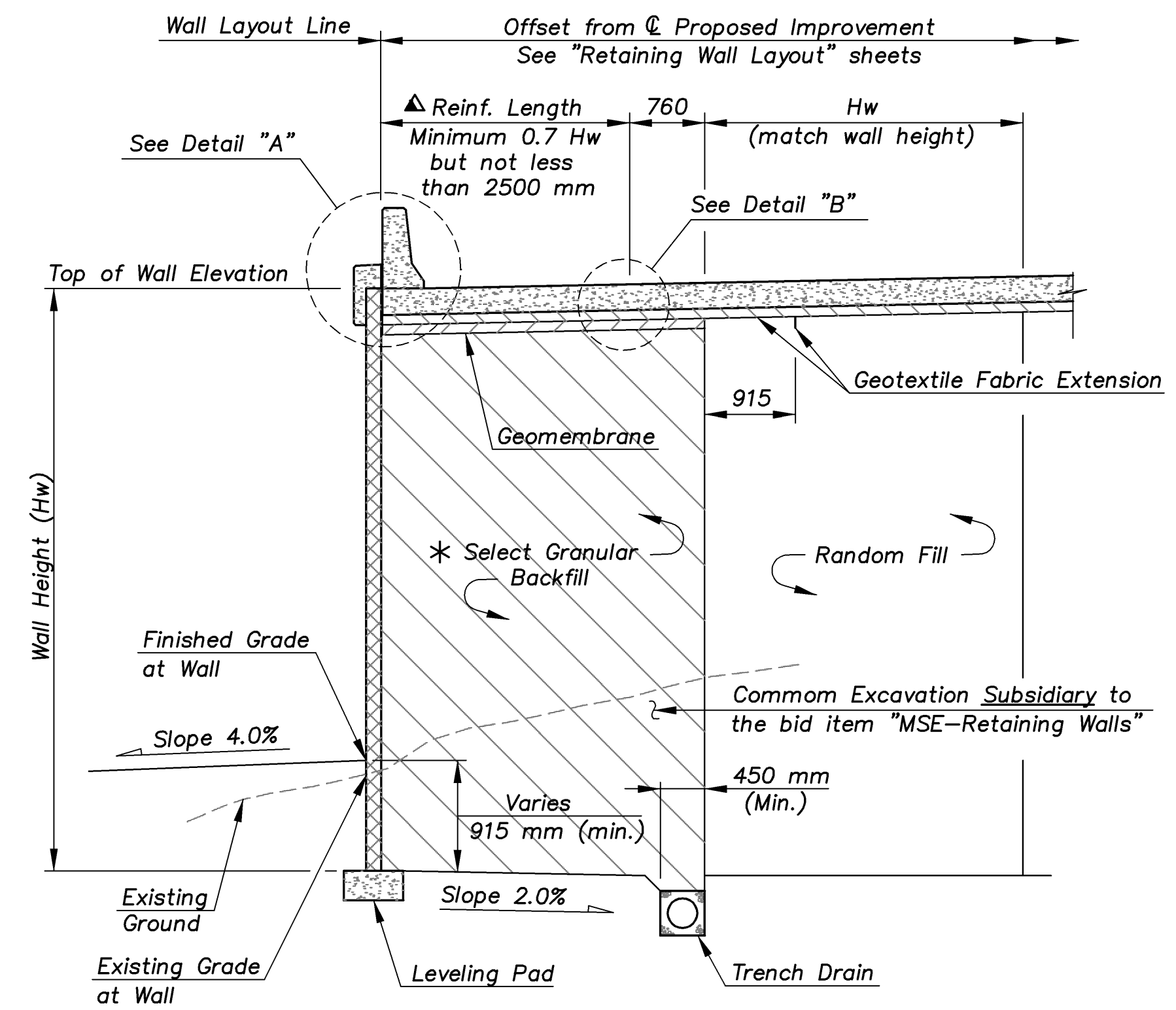


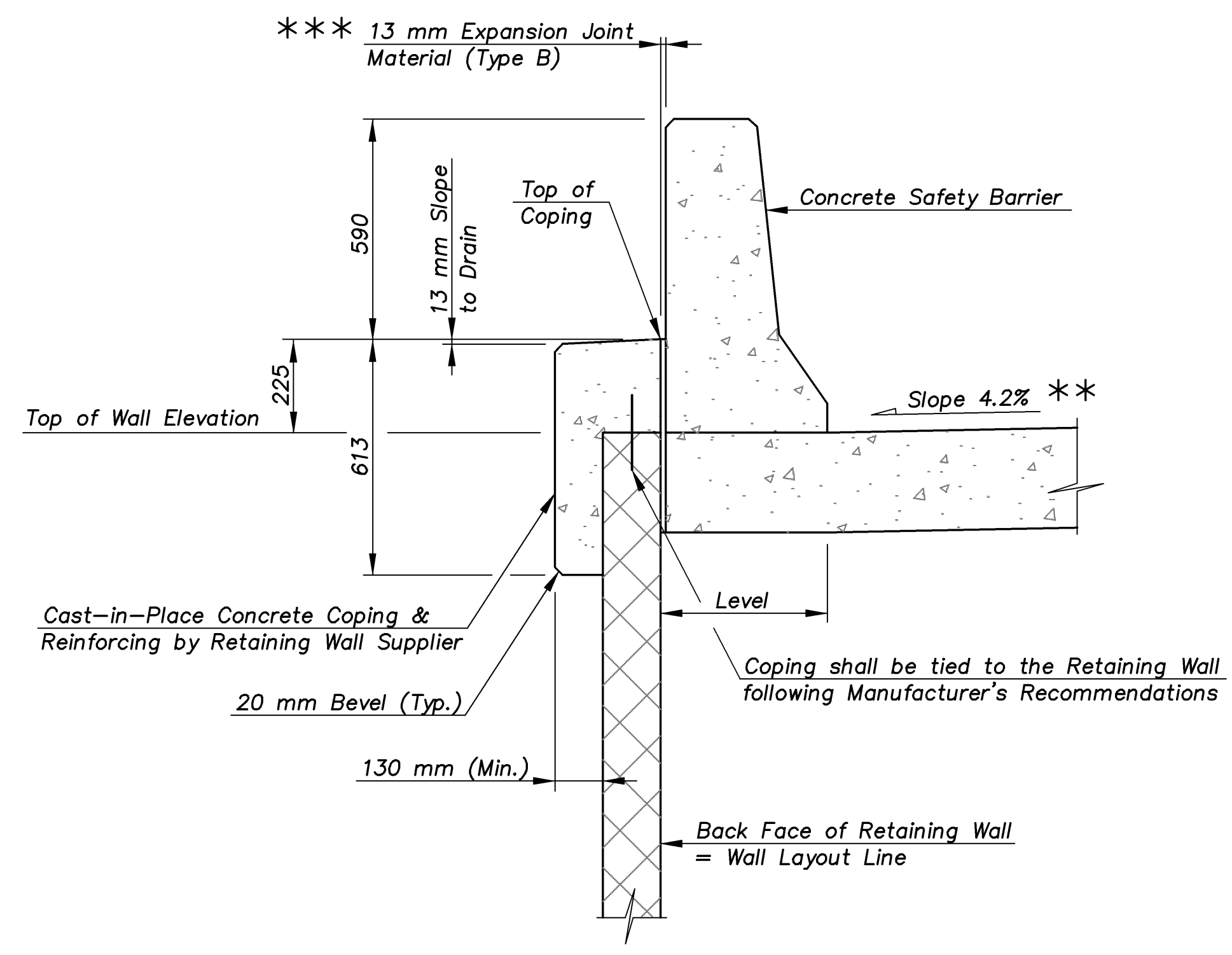
STATE	PROJECT NO.	YEAR	SHEET NO.	TOTAL SHEETS
KANSAS	54-87 K-8258-01	2007	169	556

E.F. INDICATES EACH FACE.  
N.F. INDICATES NEAR FACE.  
F.F. INDICATES FAR FACE.

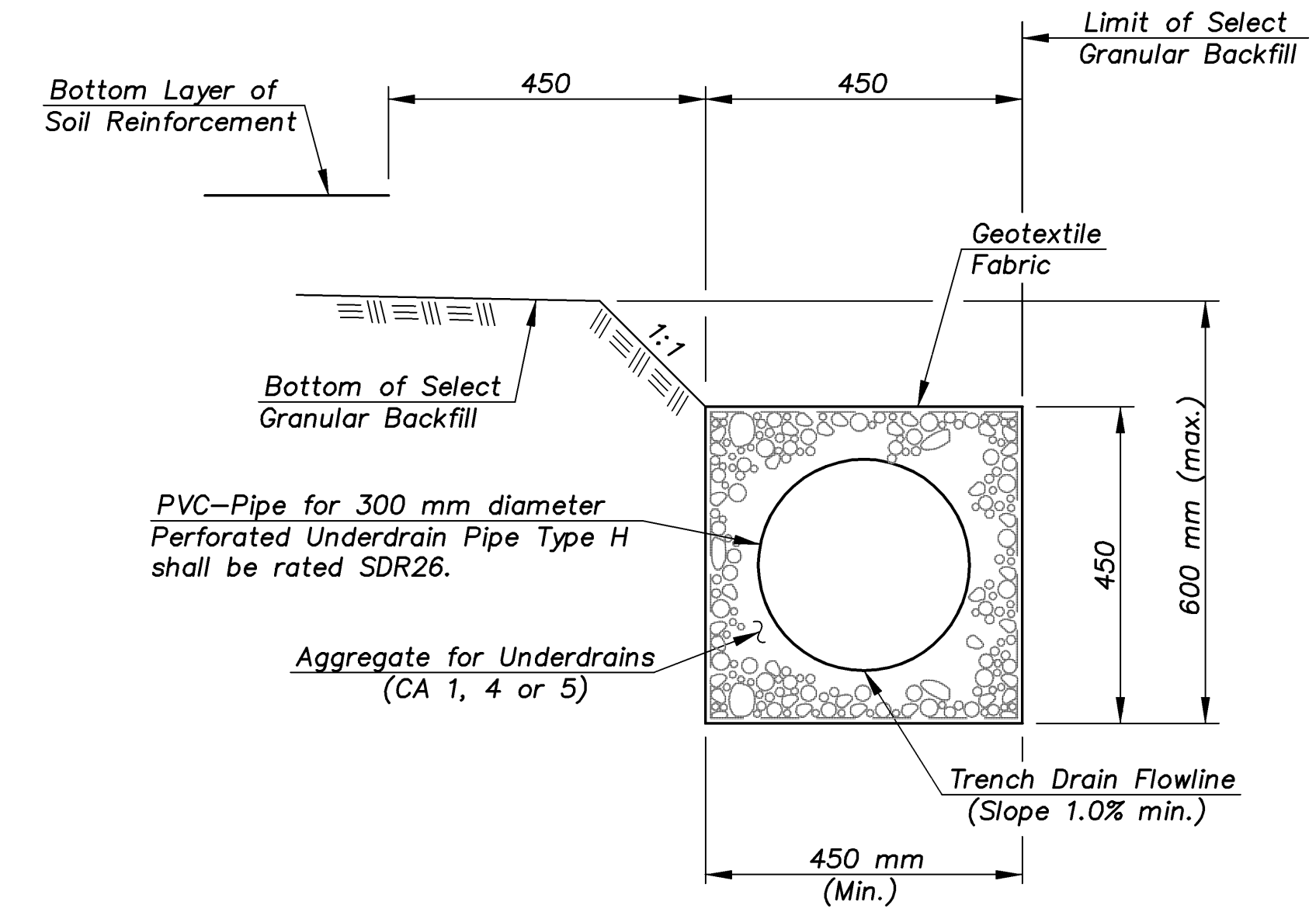


TYPICAL RETAINING WALL SECTION

- \* Provide 150 mm minimum layer of Select Granular Backfill above the top layer of soil reinforcement.
- ▲ Widths may vary according to Retaining Wall Manufacturer's details.
- \*\* Shoulder cross slope transitions from 4.2% to 2.0% through the Concrete Bridge Approach Slab.
- \*\*\* Cap with Silicone Sealant.

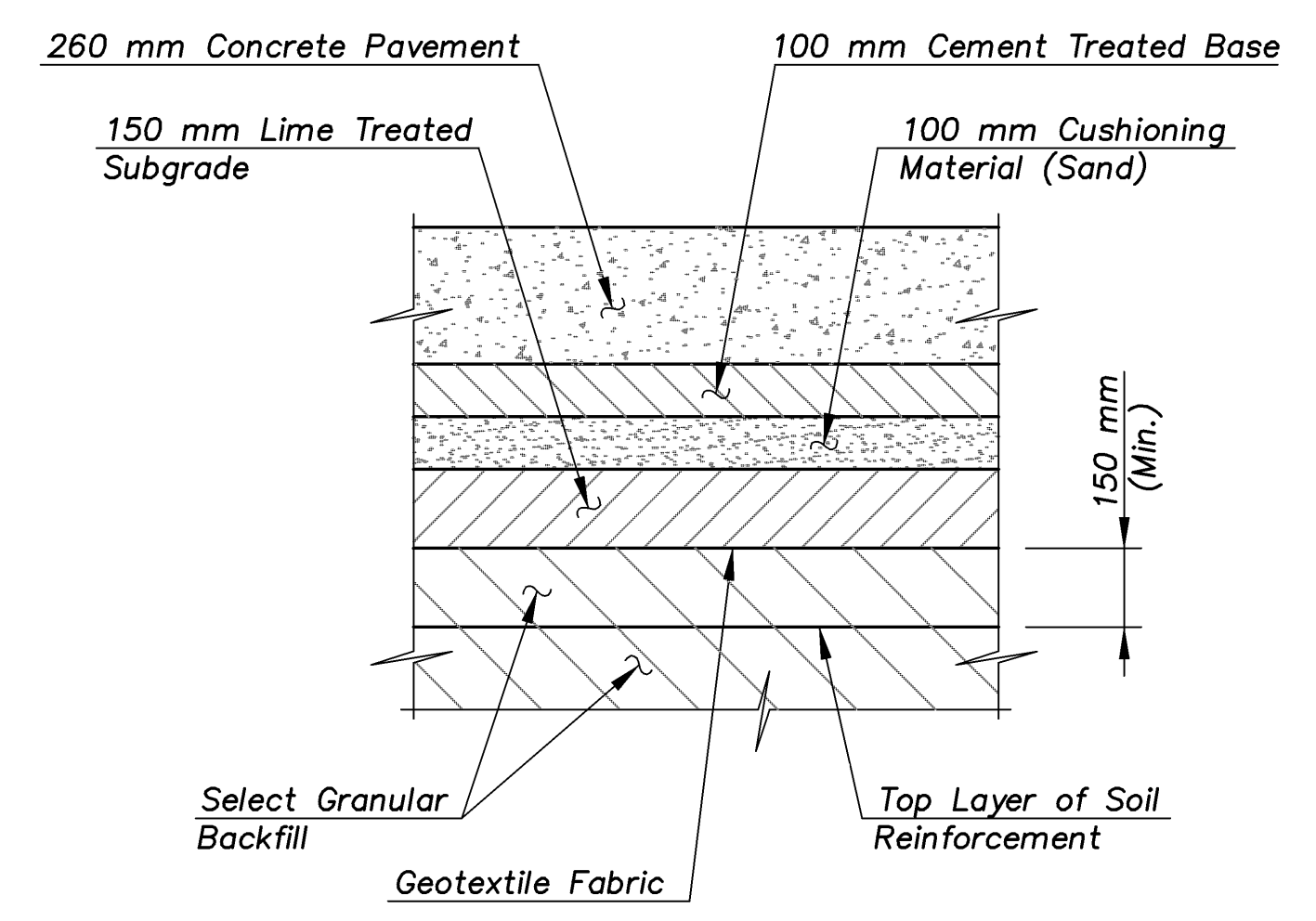


DETAIL "A"

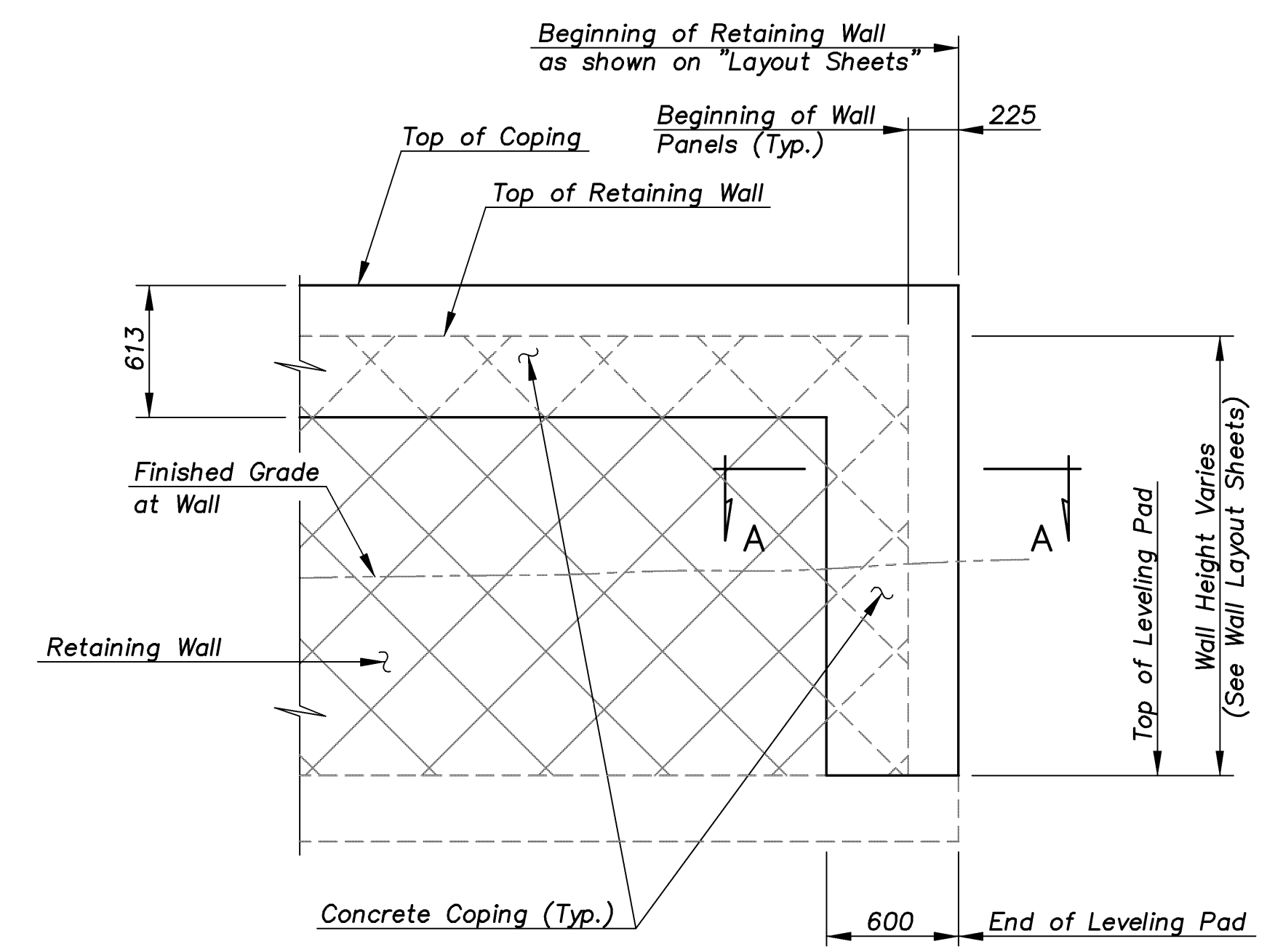


TRENCH DRAIN DETAILS

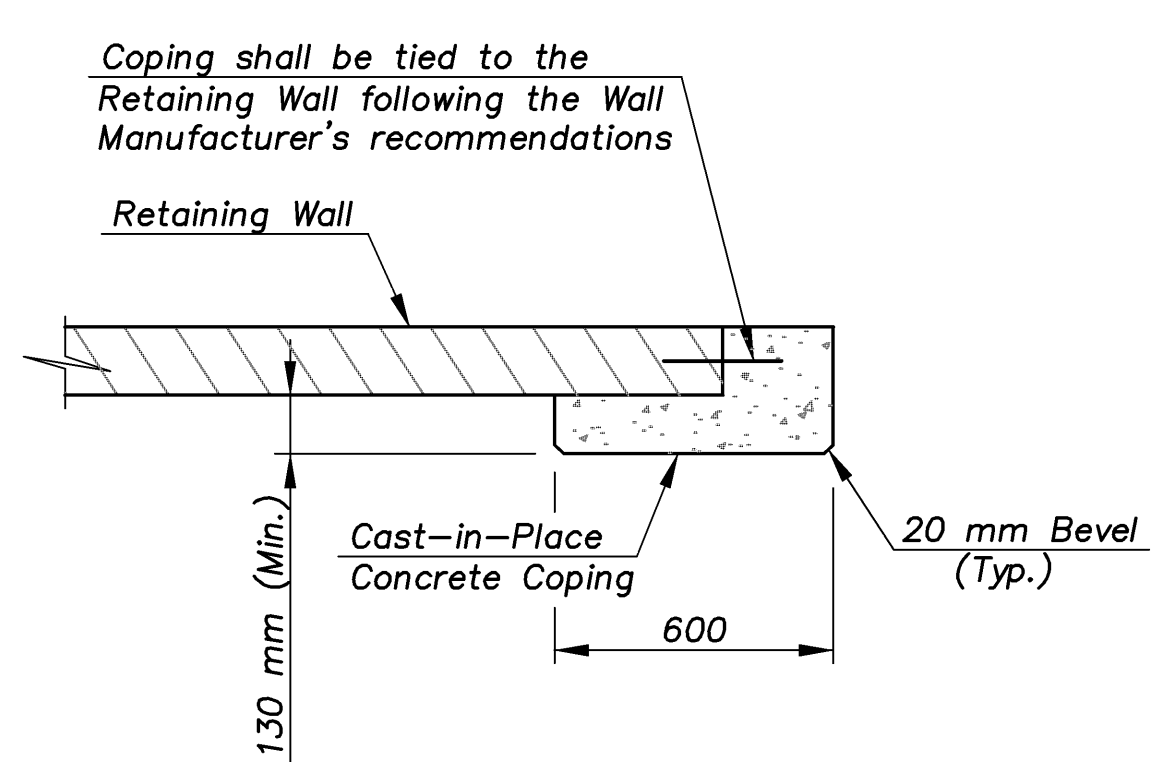
NOTES: The Geotextile Fabric for the trench drains shall conform to the requirements of the Standard Specifications. The aggregate shall be CA-1, 4 or 5. Construction of trench drains including the outlet pipes, flapgates and guide posts shall not be paid for directly, but shall be considered Subsidiary to the bid item "MSE-Retaining Walls".



DETAIL "B"



ELEVATION AT BEGINNING OF WALL



SECTION A-A

MSE-WALL/DETAILS 1:100

KANSAS DEPARTMENT OF TRANSPORTATION		 <b>Cook, Flatt &amp; Strobel</b> ENGINEERS, P. A.	
MSE-RETAINING WALL DETAILS (ARMOUR ROAD BRIDGE)			
DESIGNED	R.S.C.	SCALE	Varies
DETAILED	T.R.G.	DATE	
Proj. No. 54-87 K-8258-01		SEDGWICK COUNTY	QUANTITIES T.R.G. SHEET 2 OF 8