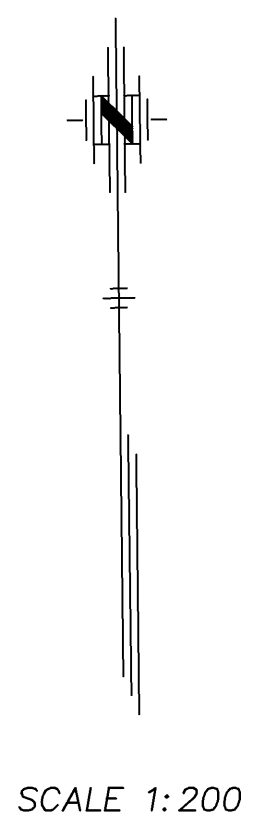
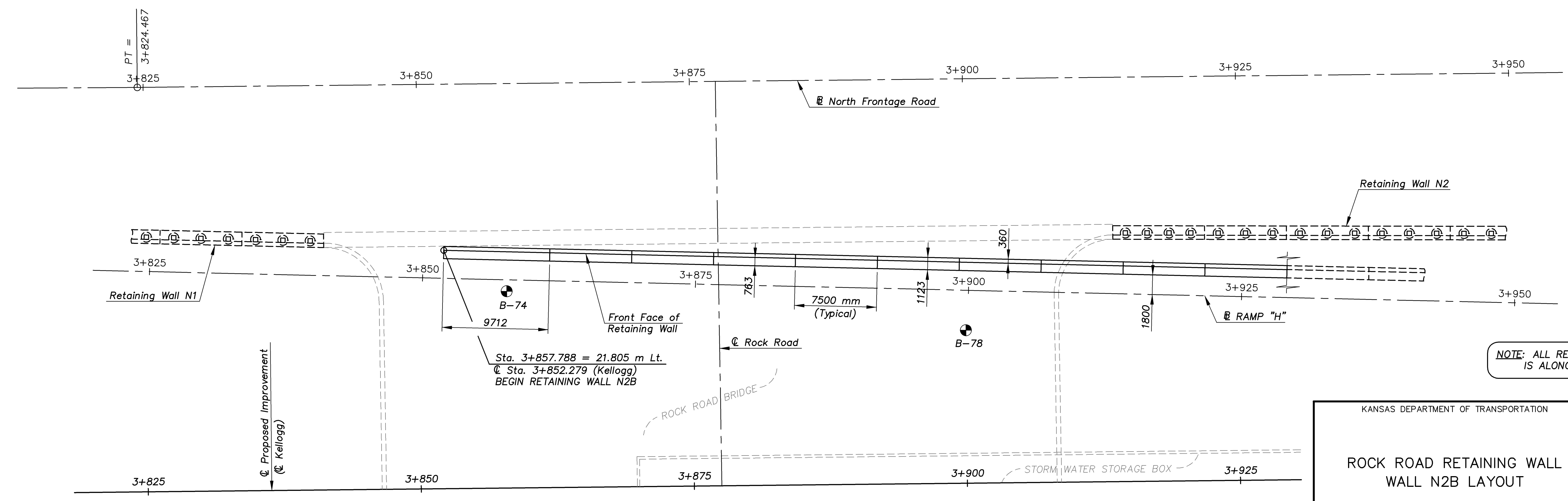
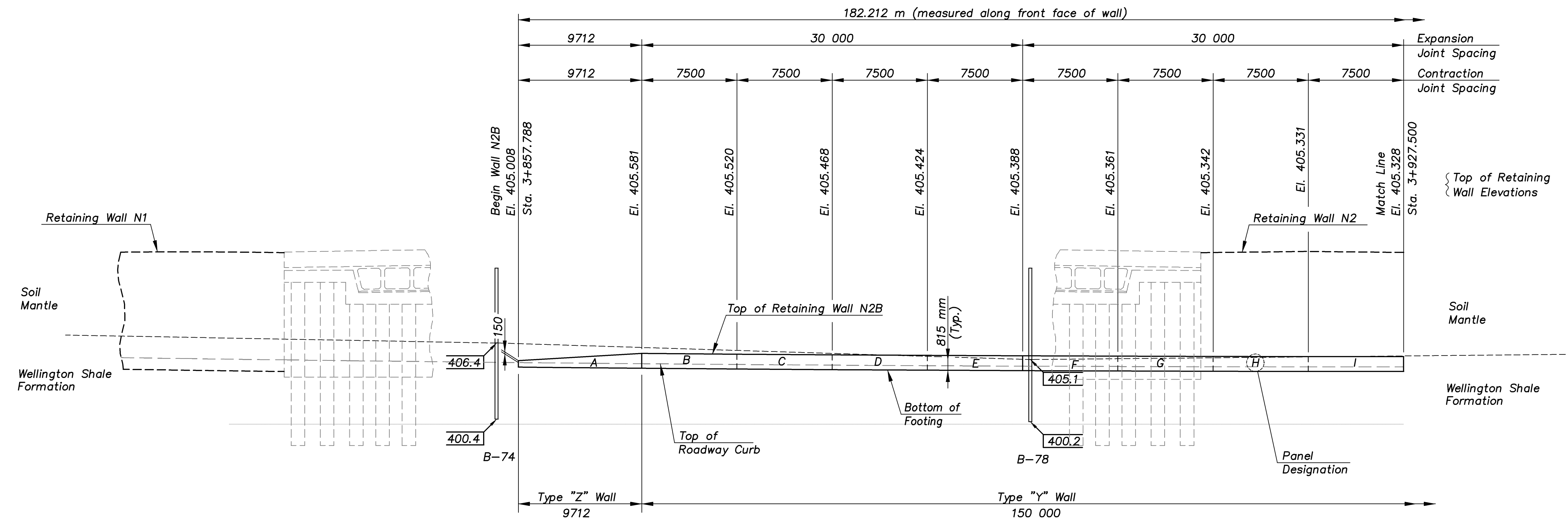


STATE	PROJECT NO.	YEAR	SHEET NO.	TOTAL SHEETS
KANSAS	54-87 K-8258-01	2007	226	556



NOTE: ALL RETAINING WALL STATIONING IS ALONG THE FACE OF THE WALL.

KANSAS DEPARTMENT OF TRANSPORTATION

CFS
Cook, Flatt & Strobel
ENGINEERS, P. A.

ROCK ROAD RETAINING WALL WALL N2B LAYOUT

DESIGNED R.S.C. SCALE Noted
 DETAILED T.R.G. DATE
 QUANTITIES T.R.G. SHEET 7 OF 27

Proj. No. 54-87 K-8258-01 SEDGWICK COUNTY

RET WALL/LAYOUT 1:200