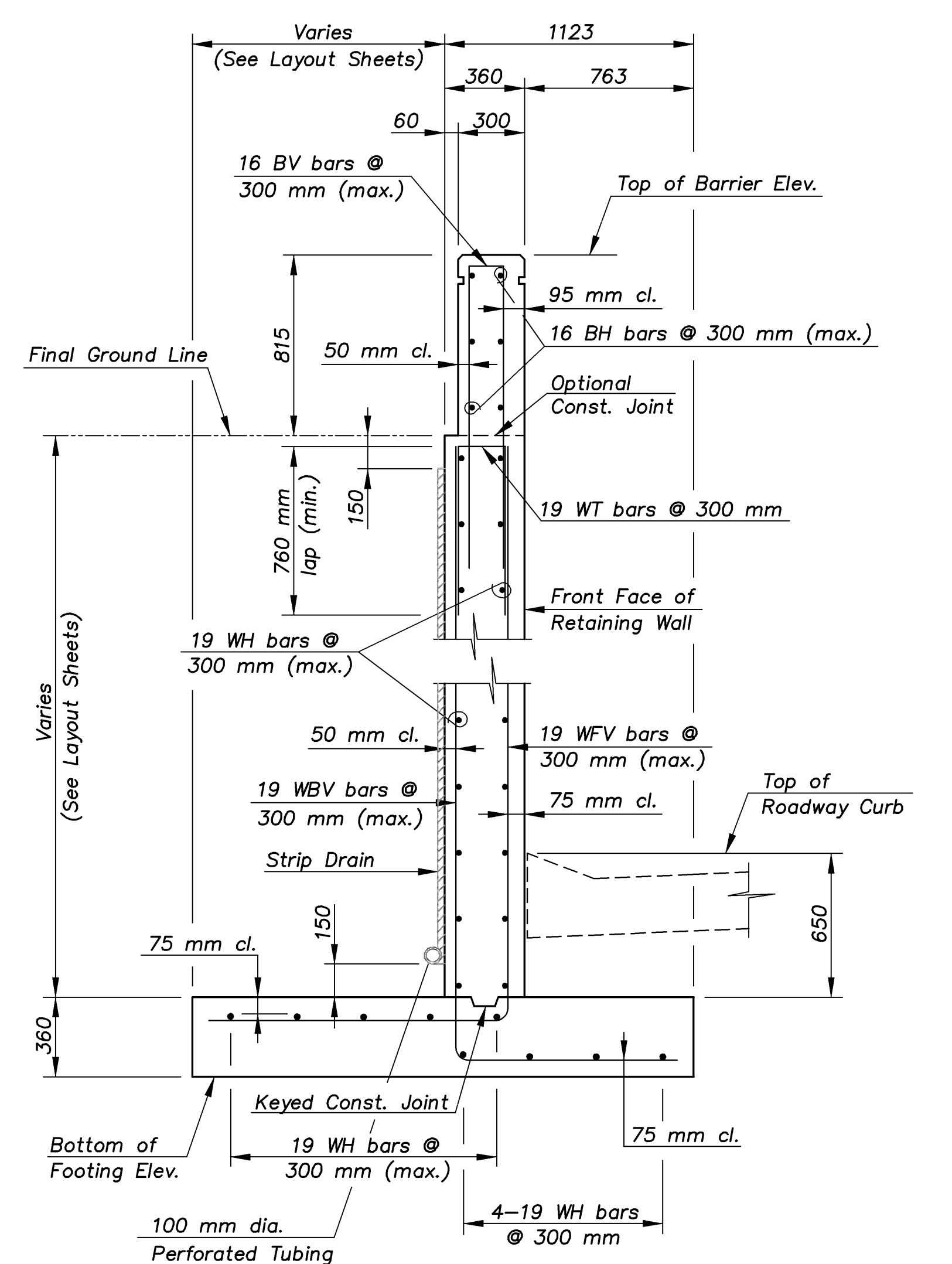


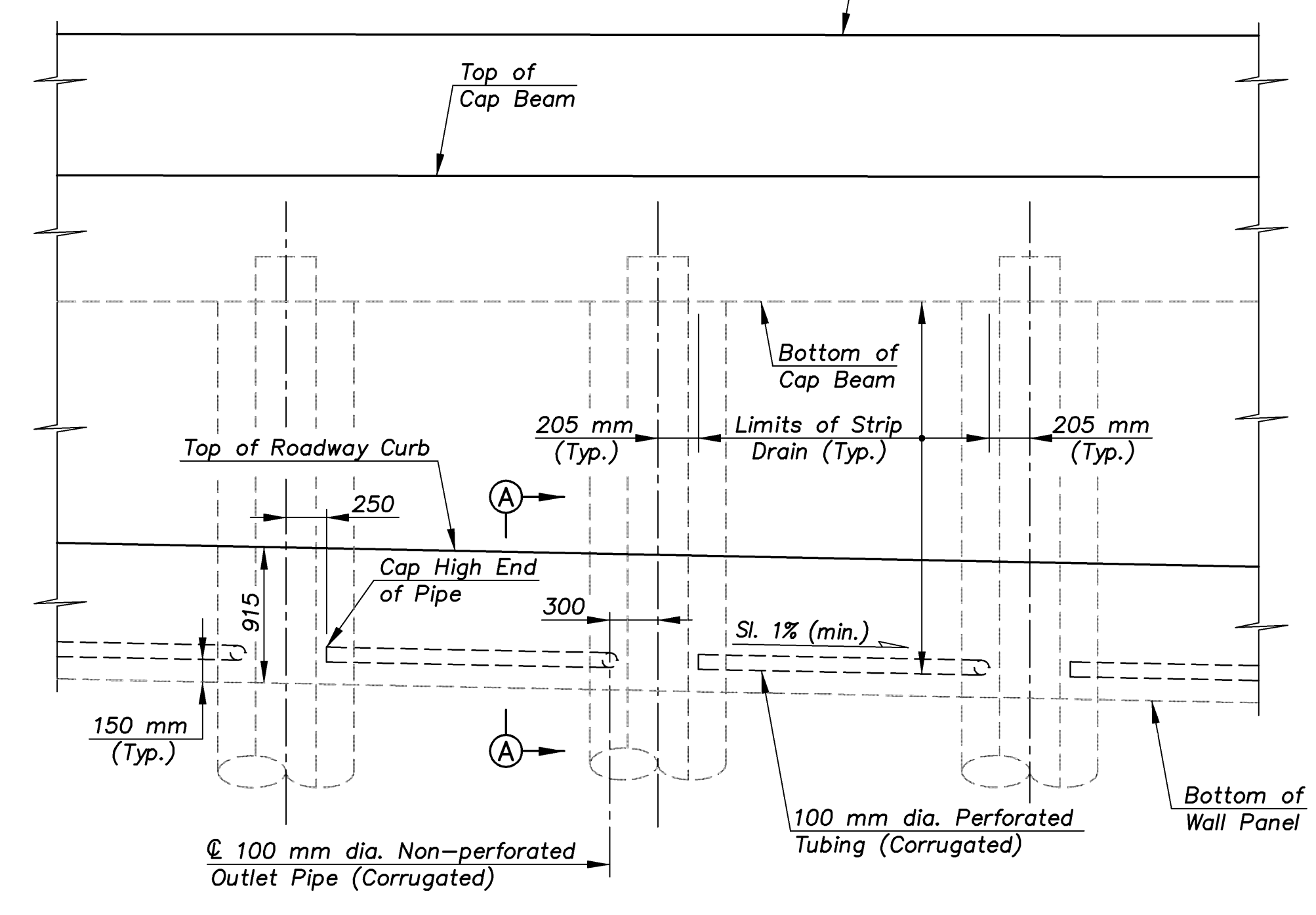
E.F. INDICATES EACH FACE.
 N.F. INDICATES NEAR FACE.
 F.F. INDICATES FAR FACE.

STATE	PROJECT NO.	YEAR	SHEET NO.	TOTAL SHEETS
KANSAS	54-87 K-8258-01	2007	237	556



TYPICAL RETAINING WALL SECTION

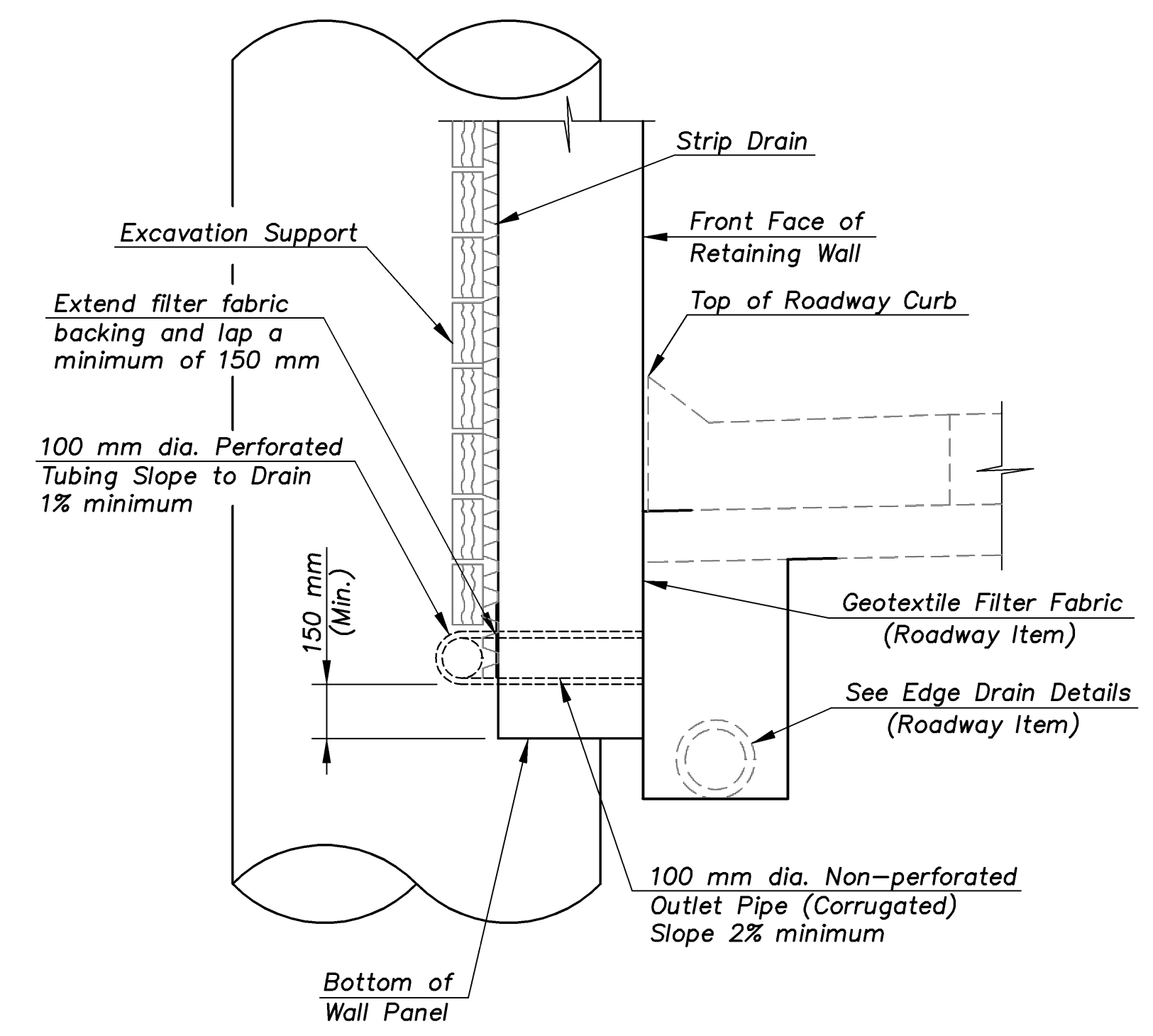
WALL N1 (PANELS CC THRU FF)
 WALL N2A (PANELS Y THRU AA)
 WALL S1 (PANELS Y THRU EE)
 WALL S2 (PANELS LL THRU QQ)



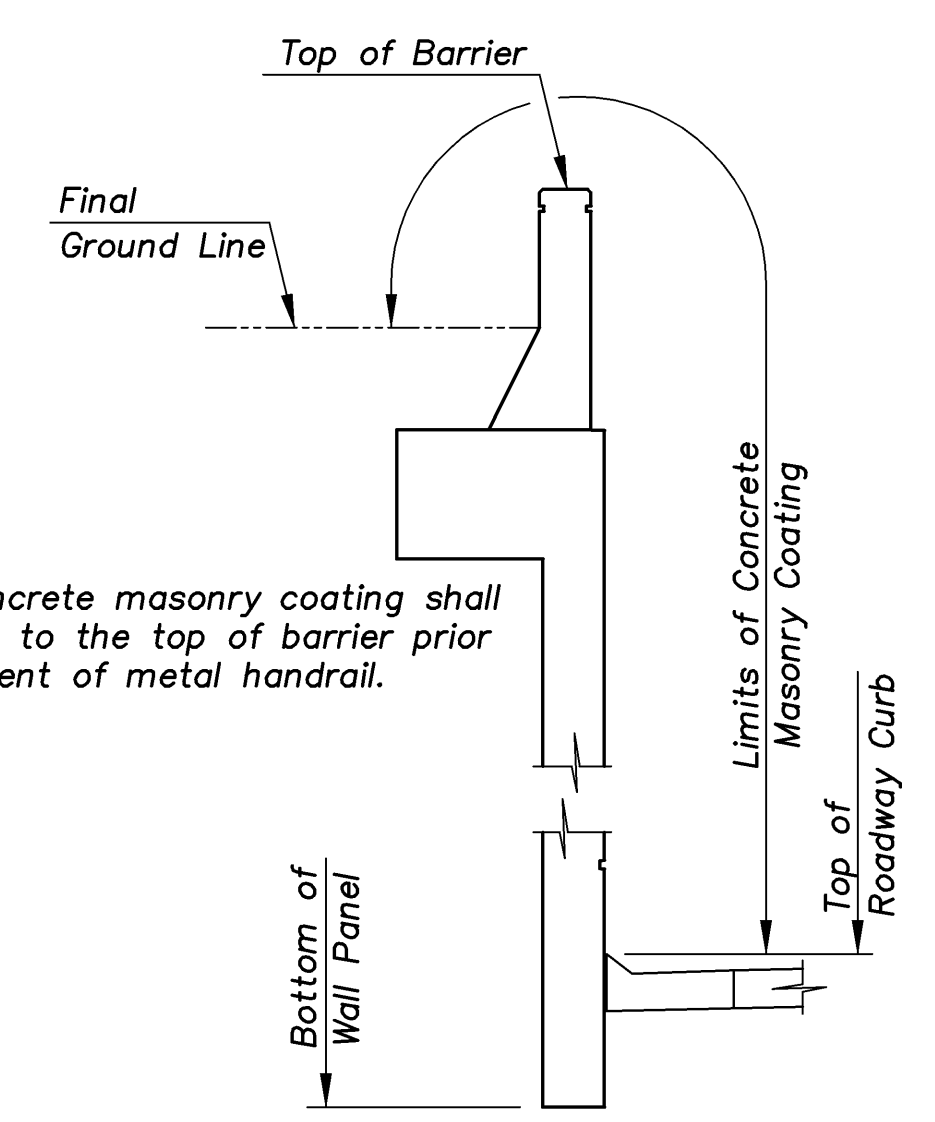
TYPICAL RETAINING WALL DRAINAGE

WALL DRAINAGE NOTES:

The Wall Contractor shall place the strip drain against the excavation support and place the perforated pipe and the outlet pipe. Perforated pipe shall be placed next to the strip drain. Non-perforated pipe shall be used for the outlet pipes. Care shall be taken to enclose the perforated pipe with the extension of the filter fabric. The Strip Drain material shall meet the requirements of the Special Provisions. Perforated pipe and non-perforated outlet pipe shall be corrugated polyethylene tubing and shall meet the requirements of KDOT Specifications. Any overexcavation below the perforated pipe shall be backfilled with cohesive soil, Type C compaction. Strip drain, perforated pipes, outlet pipes, and overexcavation backfill shall be included in the price bid for "Retaining Walls". Adjust outlet pipe locations, as required, to miss inlets. For locations of inlets see Storm Sewer Detail Sheets.



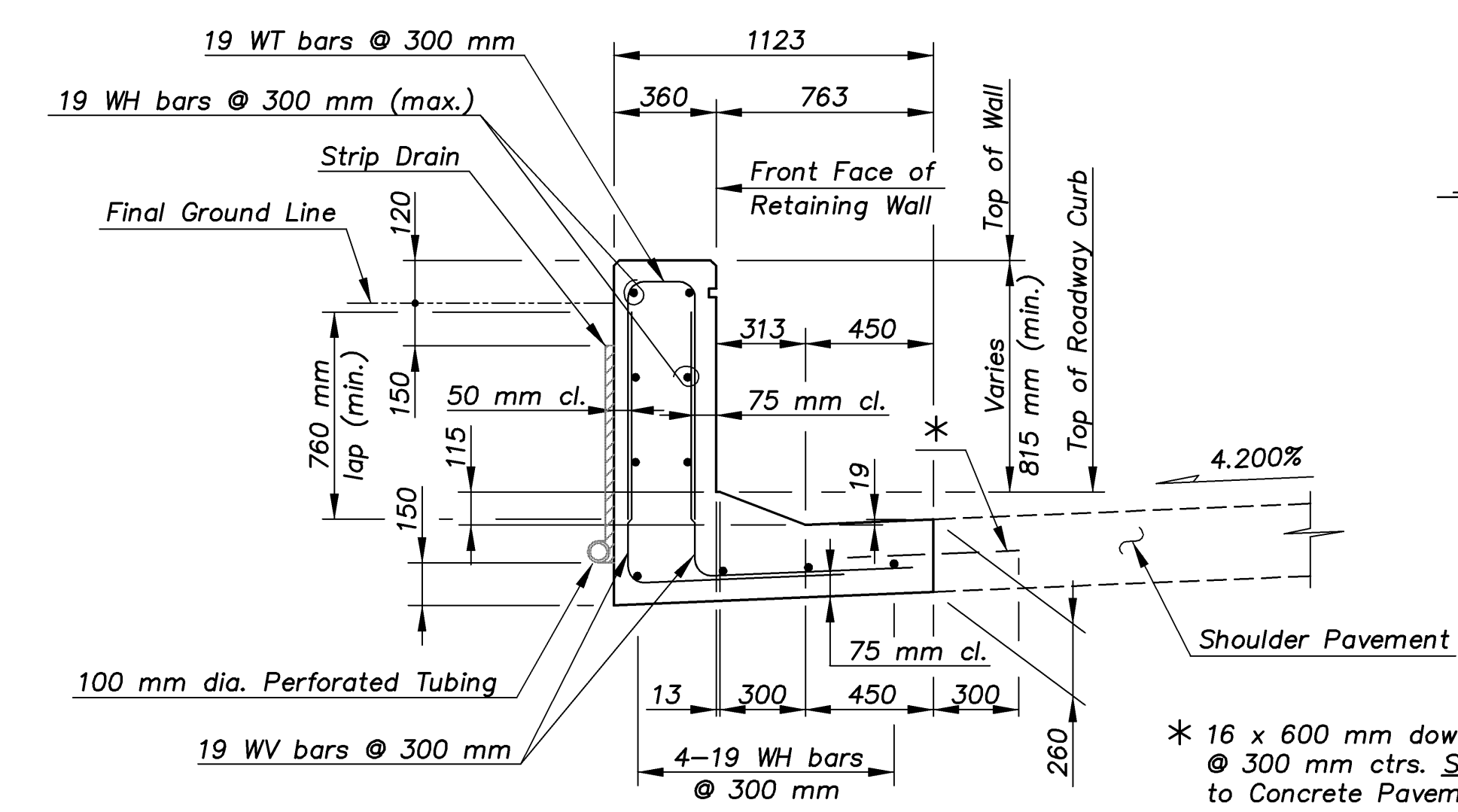
SECTION A-A



NOTE: Concrete masonry coating shall be applied to the top of barrier prior to placement of metal handrail.

LIMITS OF CONCRETE MASONRY COATING

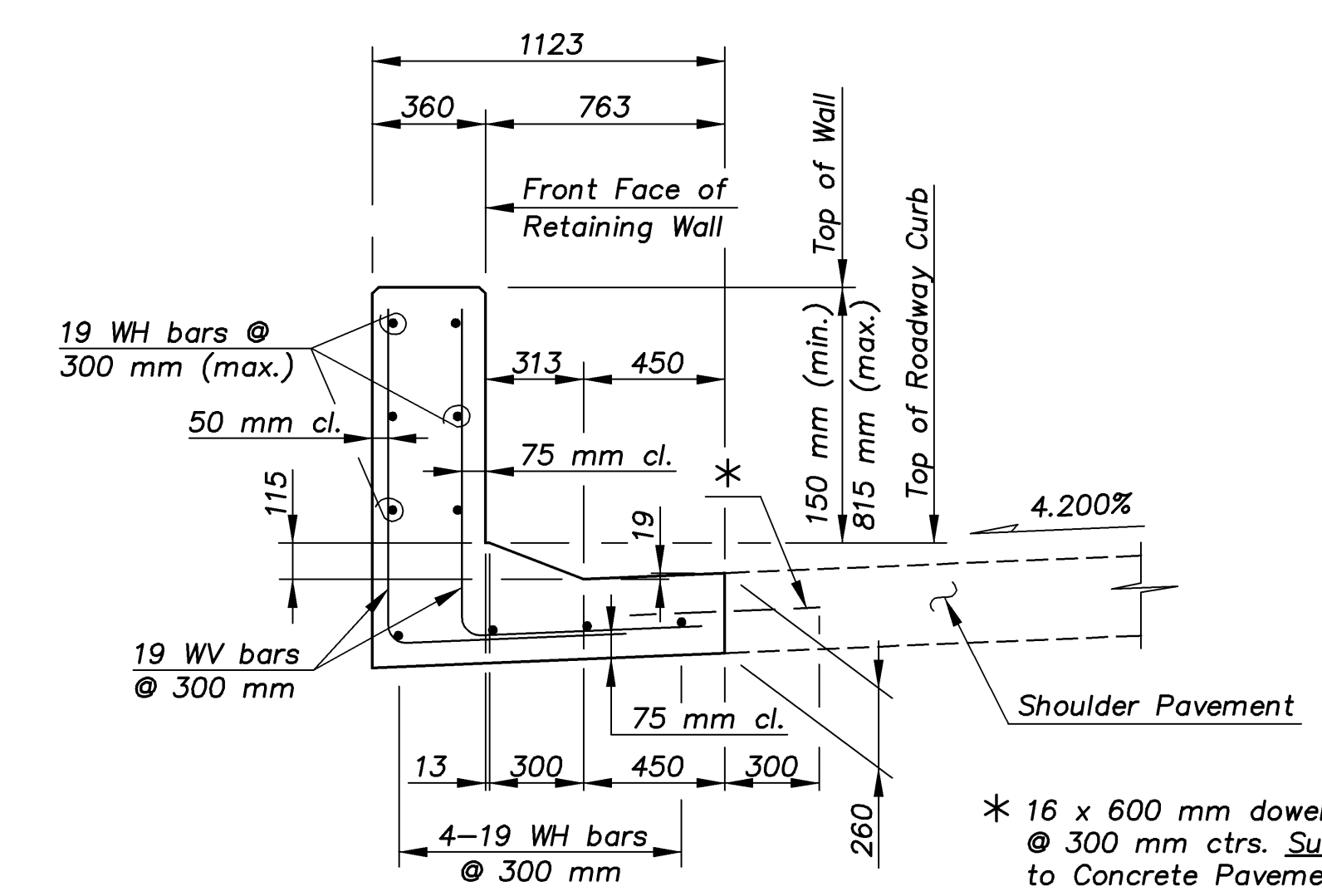
(Limits of concrete masonry coating are similar on each type of retaining wall. Metal handrail not shown.)



TYPICAL RETAINING WALL SECTION

WALL N2B (PANELS B THRU U)

* 16 x 600 mm dowel bars @ 300 mm ctrs. Subsidiary to Concrete Pavement.



TYPICAL RETAINING WALL SECTION

WALL N2B (PANEL A)

* 16 x 600 mm dowel bars @ 300 mm ctrs. Subsidiary to Concrete Pavement.

CONSTRUCTION METHOD:
 Construction for the Retaining Walls shall be cast-in-place as detailed in the plans. Precast construction will not be allowed for the retaining walls.

KANSAS DEPARTMENT OF TRANSPORTATION

ROCK ROAD RETAINING WALLS
 TYPICAL SECTIONS

CFS
 Cook, Flatt & Strobel
 ENGINEERS, P. A.

DESIGNED R.S.C.	SCALE Noted
DETAILED T.R.G.	DATE
QUANTITIES T.R.G.	SHEET 18 OF 27

Proj. No. 54-87 K-8258-01 SEDGWICK COUNTY

1:200 RET WALL/DETAILS