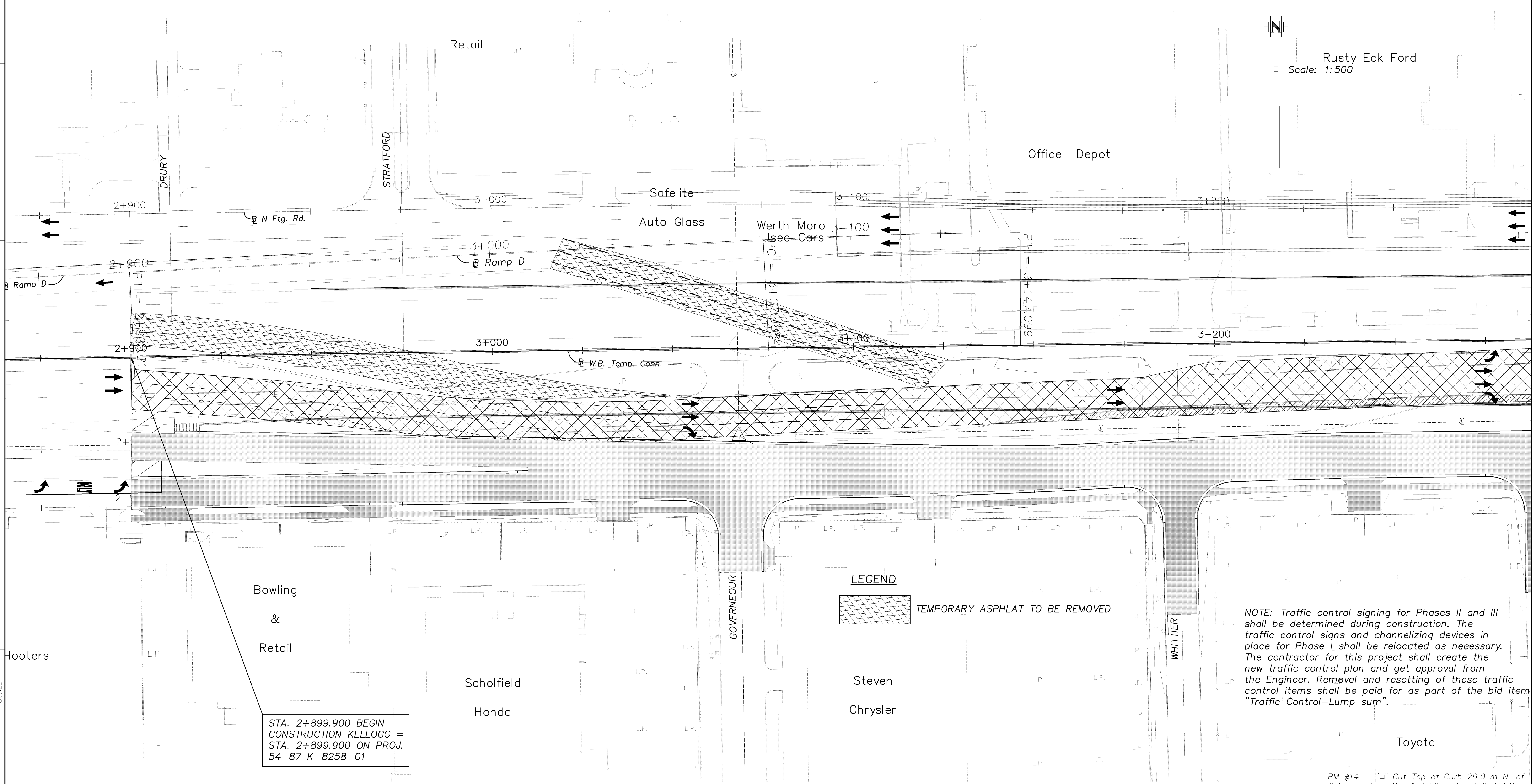


STATE	PROJECT NO.	YEAR	SHEET NO.	TOTAL SHEETS
KANSAS	54-87 K-8258-01	2007	489	556

SW 1/4 SEC. 19 , T27S, R 2E

DATE	BY

REFERENCE NOTED	REFERENCE CHECKED



Rusty Eck Ford
Scale: 1:500

LEGEND
 TEMPORARY ASPHALT TO BE REMOVED

NOTE: Traffic control signing for Phases II and III shall be determined during construction. The traffic control signs and channelizing devices in place for Phase I shall be relocated as necessary. The contractor for this project shall create the new traffic control plan and get approval from the Engineer. Removal and resetting of these traffic control items shall be paid for as part of the bid item "Traffic Control-Lump sum".

STA. 2+899.900 BEGIN CONSTRUCTION KELLOGG = STA. 2+899.900 ON PROJ. 54-87 K-8258-01

BM #14 - "□" Cut Top of Curb 29.0 m N. of Q. N. Frontage Rd. & 13.8 m E. of Q. Whittier 29.3 m Lt. Q. Sta. 3+202.6 Elev. = 410.659

NW 1/4 SEC. 30 , T27S, R 2E

TRAFFIC CONTROL PHASE II
EAST KELLOGG
 STA. 2+875 TO STA. 3+275

CFS Cook, Flatt & Strobel
 ENGINEERS, P.A.

BM #10 - "□" Cut Top of Curb 24.0 m N. & 3.1 m E. of Q. of Intersection Mission Rd. & N. Frontage Rd. 17.4 m Lt. Q. Sta. 2+803.0 Elev. = 414.209

BM #11 - "□" Cut Top of Curb 23.0 m N. & 3.1 m W. of Q. of Intersection Drury Ln. & N. Frontage Rd. 16.6 m Lt. Q. Sta. 2+908.3 Elev. = 413.639

BM #12 - "□" Cut Top of Curb 15.0 m N. & 3.1 m E. of Q. of Intersection N.B. Lane Stafford & N. Frontage Rd. 9.2 m Lt. Q. Sta. 2+983.6 Elev. = 412.959

BM #13 - "□" Cut Top of Curb 25.7 m N. of Q. N. Frontage Rd. & 0.6 m E. of Q. Gouverneur 25.7 m Lt. Q. Sta. 3+068.5 Elev. = 411.962