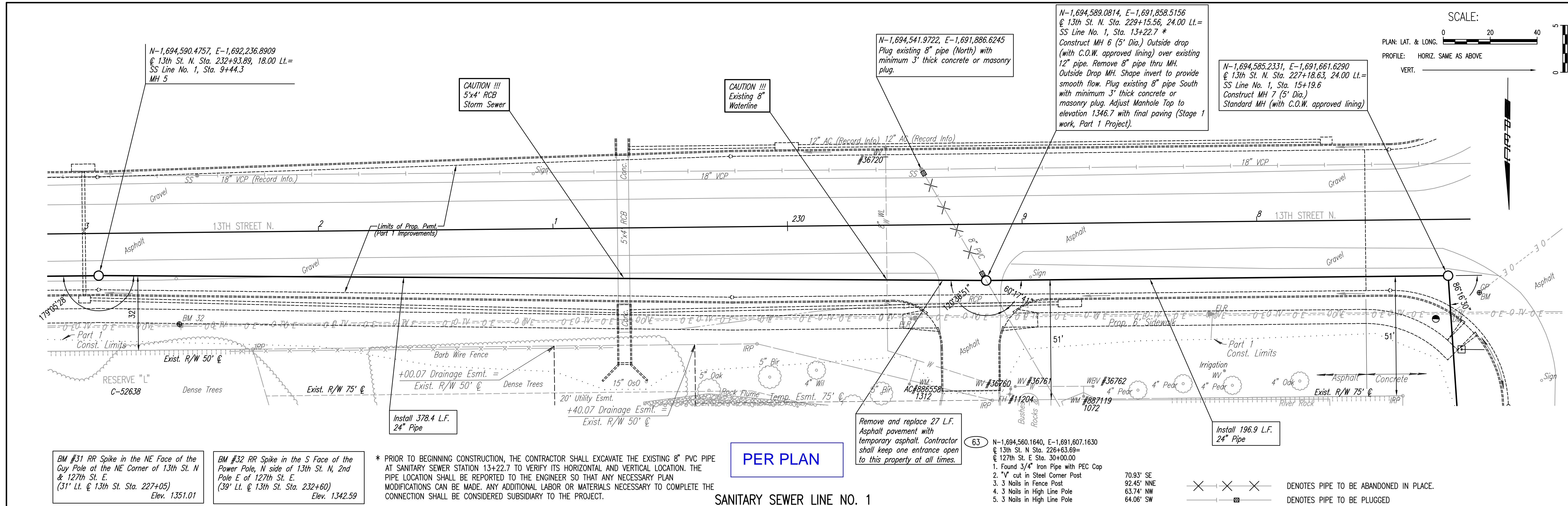


DATE	
BY	
CHECKED	
PLAN	

DATE	
BY	
CHECKED	
PROFILE	

Saved: 03-09-2006 3:57:24 PM by RFT
 Plot Scale: 1:20 03-09-2006 5:15:18 PM by RFT
 J:\SENTOU\2000\00310\2006-03-09 to City\Sanitary Sewer\05-Line01



BM #31 RR Spike in the NE Face of the Guy Pole at the NE Corner of 13th St. N & 127th St. E. (31' Lt. @ 13th St. Sta. 227+05) Elev. 1351.01

BM #32 RR Spike in the S Face of the Power Pole, N side of 13th St. N, 2nd Pole E of 127th St. E. (39' Lt. @ 13th St. Sta. 232+60) Elev. 1342.59

* PRIOR TO BEGINNING CONSTRUCTION, THE CONTRACTOR SHALL EXCAVATE THE EXISTING 8" PVC PIPE AT SANITARY STATION 13+22.7 TO VERIFY ITS HORIZONTAL AND VERTICAL LOCATION. THE PIPE LOCATION SHALL BE REPORTED TO THE ENGINEER SO THAT ANY NECESSARY PLAN MODIFICATIONS CAN BE MADE. ANY ADDITIONAL LABOR OR MATERIALS NECESSARY TO COMPLETE THE CONNECTION SHALL BE CONSIDERED SUBSIDIARY TO THE PROJECT.

PER PLAN

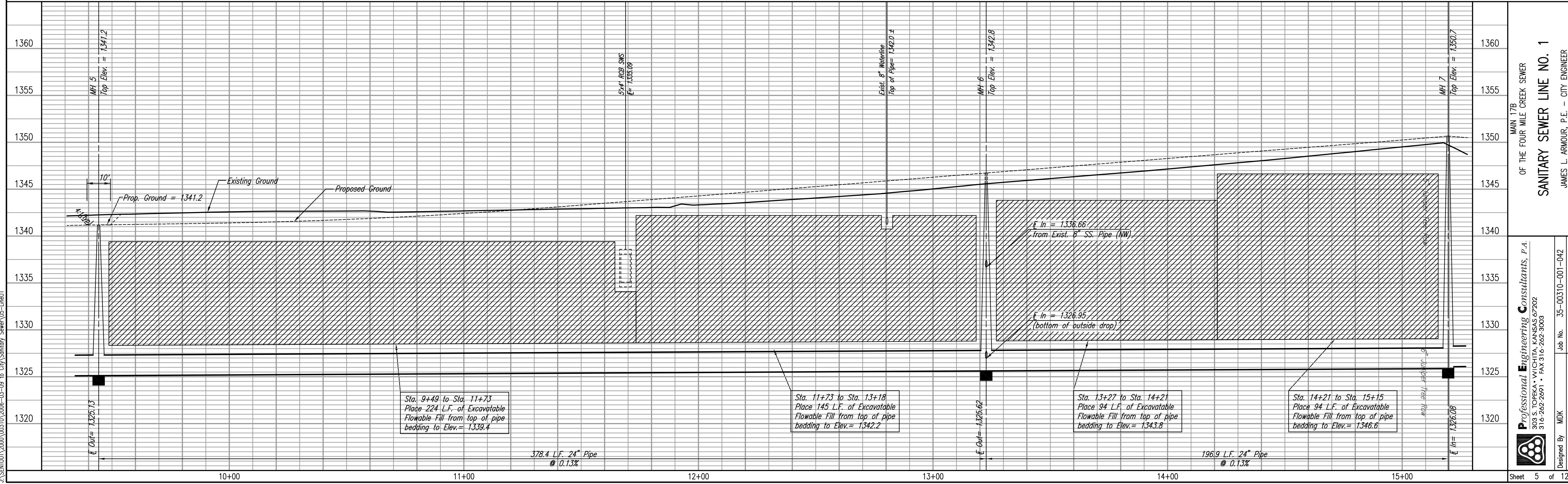
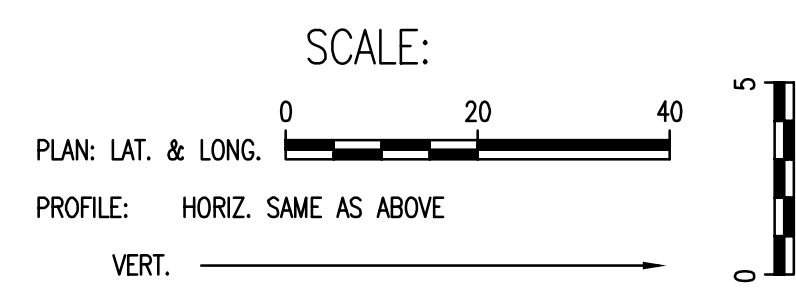
SANITARY SEWER LINE NO. 1

Remove and replace 27 L.F. Asphalt pavement with temporary asphalt. Contractor shall keep one entrance open to this property at all times.

- 63 N-1,694,560.1640, E-1,691,607.1630
 @ 13th St. N. Sta. 226+63.69=
 @ 127th St. E. Sta. 30+00.00
1. Found 3/4" Iron Pipe with PEC Cap
 2. "V" cut in Steel Corner Post
 3. 3 Nails in Fence Post
 4. 3 Nails in High Line Pole
 5. 3 Nails in High Line Pole

70.93' SE
 92.45' NNE
 63.74' NW
 64.06' SW

✕ ✕ ✕ DENOTES PIPE TO BE ABANDONED IN PLACE.
 □ DENOTES PIPE TO BE PLUGGED



Professional Engineering Consultants, P.A.
 803 E. TOPICKA AVENUE, KANSAS CITY, MO 64108
 316.262.2691 • FAX 316.262.3003

Job No. 35-00310-001-042
 Date November 2005

Designed By MDK
 Drawn By AEE

Professional Engineering Consultants, P.A.
 OF THE FOUR MILE CREEK SEWER
SANITARY SEWER LINE NO. 1
 JAMES L. ARMOUR, P.E. - CITY ENGINEER
 CITY OF WICHITA PROJECT NO. 468-84136

Sheet 5 of 12