

BROMILLOW'S
ADDITION
SOUTH BROADWAY
SEDGWICK COUNTY KANSAS

State of Kansas } 35-
County of Sedgewick } ss: I, Clyde M. Broughman, County Surveyor in and for said county and state of hereby certify that the surveys and platted Bromillow's South Broadway, Add. Sedgewick County, Kansas, and that the accompanying plat is a true and correct exhibit of the property as surveyed, described as follows: Beginning at the northeast corner of the northeast quarter of section 8, Twp. 28 South, Range 1 East of the 6th Principal Meridian, thence west 33 1/2 rods, thence south 48 rods, thence east 33 1/2 rods to section line, thence north 48 rods to the place of beginning, and also beginning 48 rods south of the northeast corner of the northeast quarter of section 8, Twp. 28 South, Range 1 East of the 6th Principal Meridian, thence west 30 rods, thence south 16 rods, thence west 50 rods to section line, thence north 16 rods to the place of beginning.

Know all men by these presents that I, Laura A. Bromilow, a widow, has caused the land described in the surveys certificate to be added into lots and streets and avenues to be known as Bromillow's South Broadway, Add., Sedgewick County, Kansas, on a plat heretofore granted on the 10th day of June 1919, and for the general location and maintenance of all public utilities. The streets and avenues hereby dedicated to and for the use of the public.

State of Kansas } 35-
County of Sedgewick } ss:

It is remembered that on this 1st day of April, 1931, before me a notary public in and for said county and state, came Laura A. Bromilow a widow, to me personally known to be the same person who executed the foregoing instrument of writing and duly acknowledged the execution of the same as her voluntary act and deed.

My commission expires Feb. 8, 1932. *Delphine J. Mettler, Notary Public*

This plat of Bromillow's South Broadway Add., Sedgewick County, Kansas, has been submitted to and considered by the City Planning Commission of the City of Wichita, Kansas, and is hereby transmitted to the Board of City Commissioners of the City of Wichita, Kansas, with the recommendation that such plat be approved as proposed.

Dated this 21st day of April, 1931.

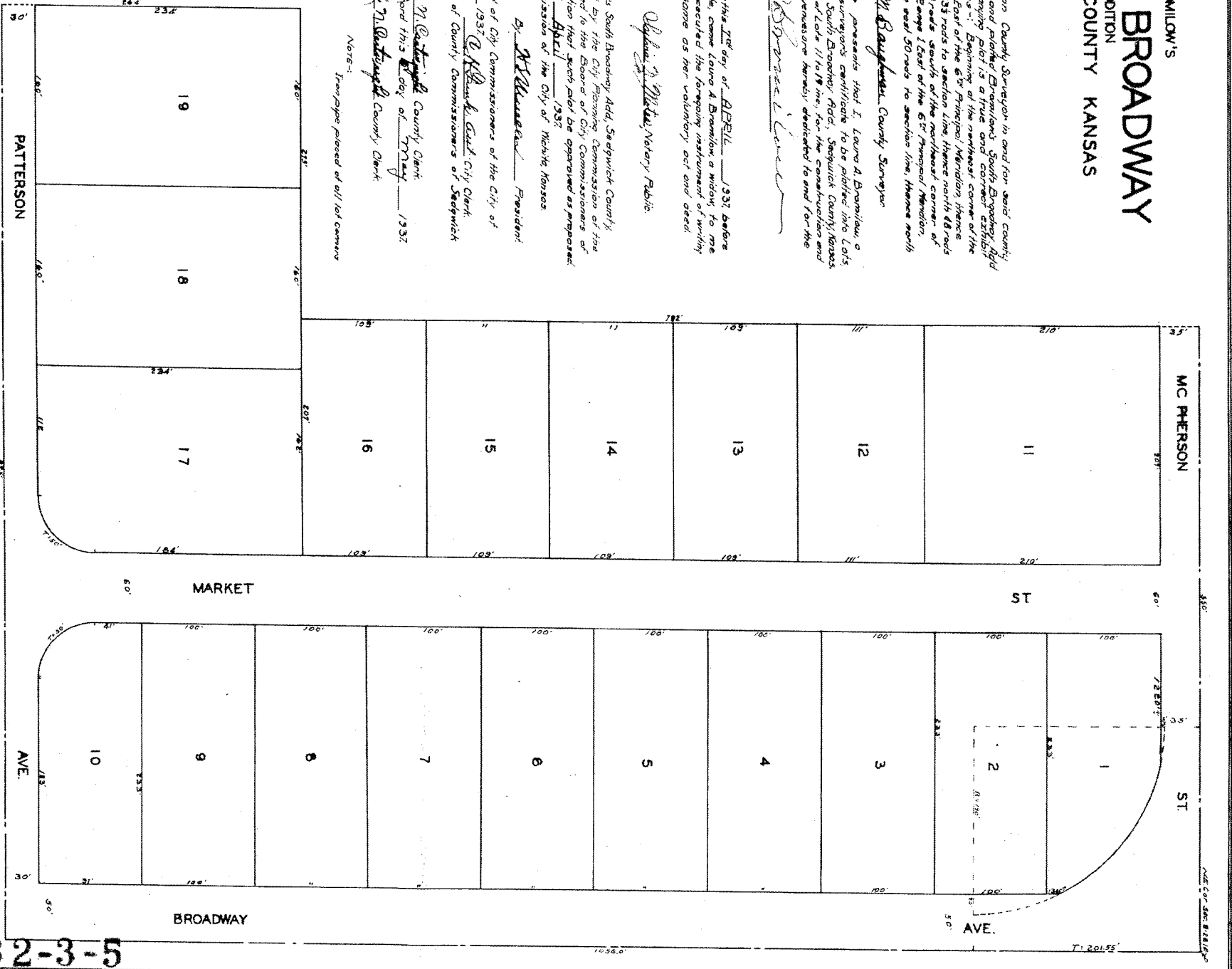
The City Planning Commission of the City of Wichita, Kansas,
By: *W. H. Kline*, President

Approved by the Board of City Commissioners of the City of Wichita, Kansas, this 21 day of April, 1931. *D. H. Kline, City Clerk*

Approved by the Board of County Commissioners of Sedgewick County, this 5 day of May, 1931. *Clayton M. Dunnington, County Clerk*

State of Kansas } 35-
County of Sedgewick } ss: This is to certify that this instrument was filed for record in the Register of Deeds office on the 6 day of May, 1931, at 11:00 A.M. and is duly recorded.

Frank C. Meitz,
Register of Deeds



This digital plat record accurately reproduces in all details the original plat filed with the Sedgewick County Register of Deeds. It is a true and correct copy of the original as filed with the Sedgewick County Geographic Information Systems.

Bill Meek, Register of Deeds
Deputy Register of Deeds

