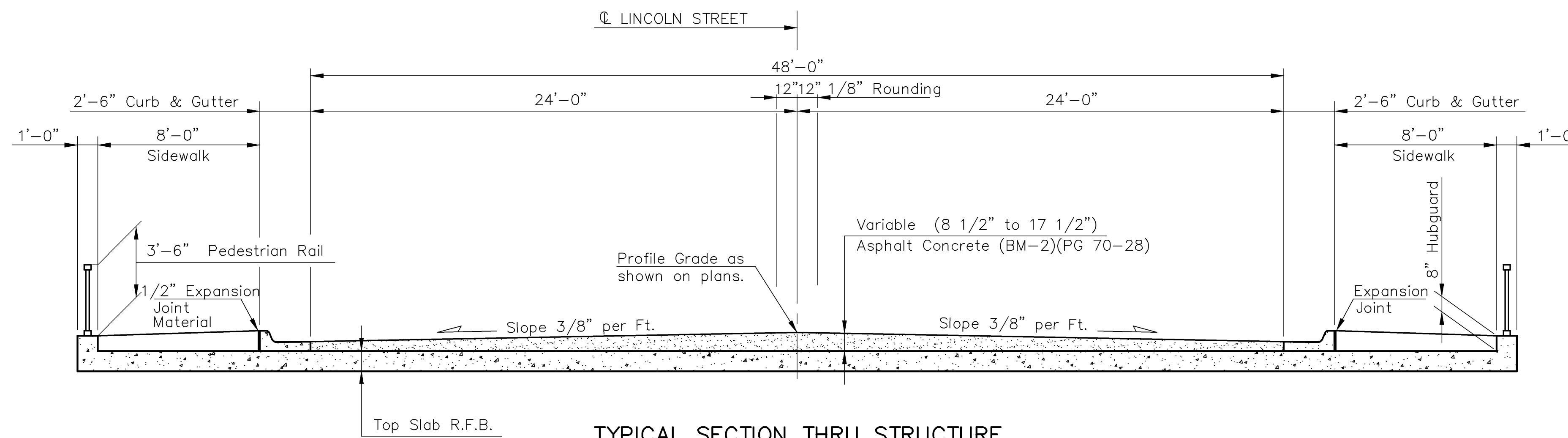
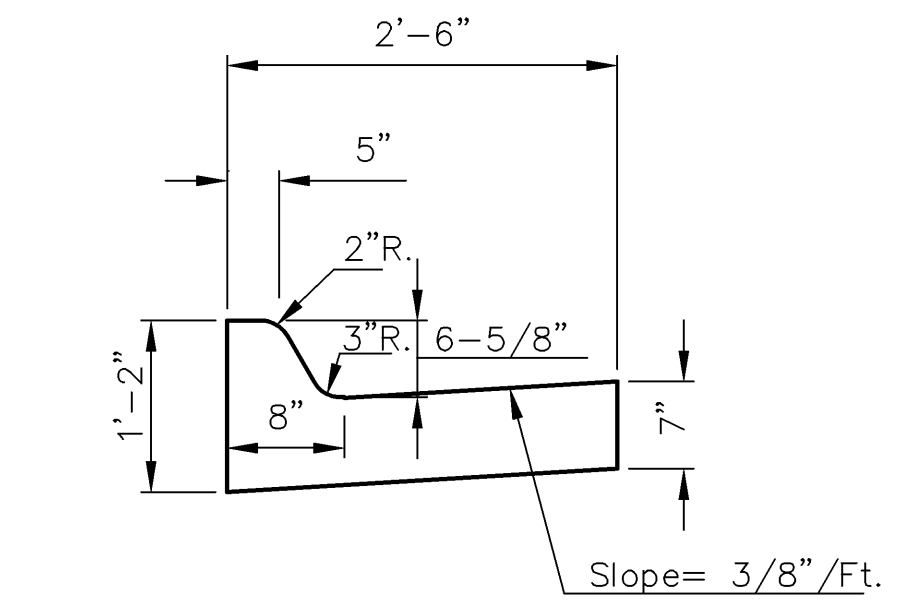


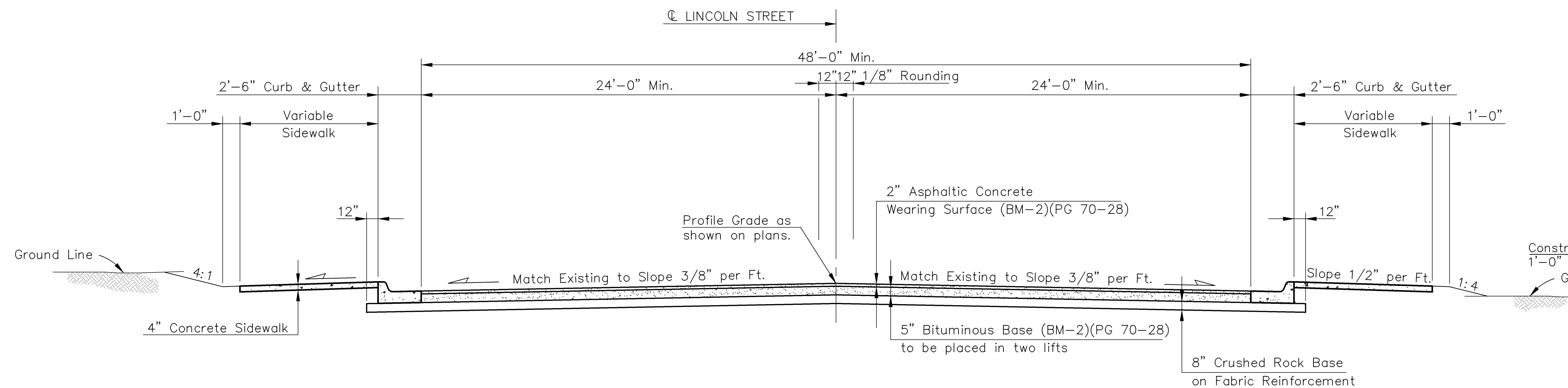
F.H.W.A. REGION NO.	STATE	PROJECT NO.	YEAR	SHEET NO.	TOTAL SHEETS
7	KANSAS	472-84703	2010	2	36



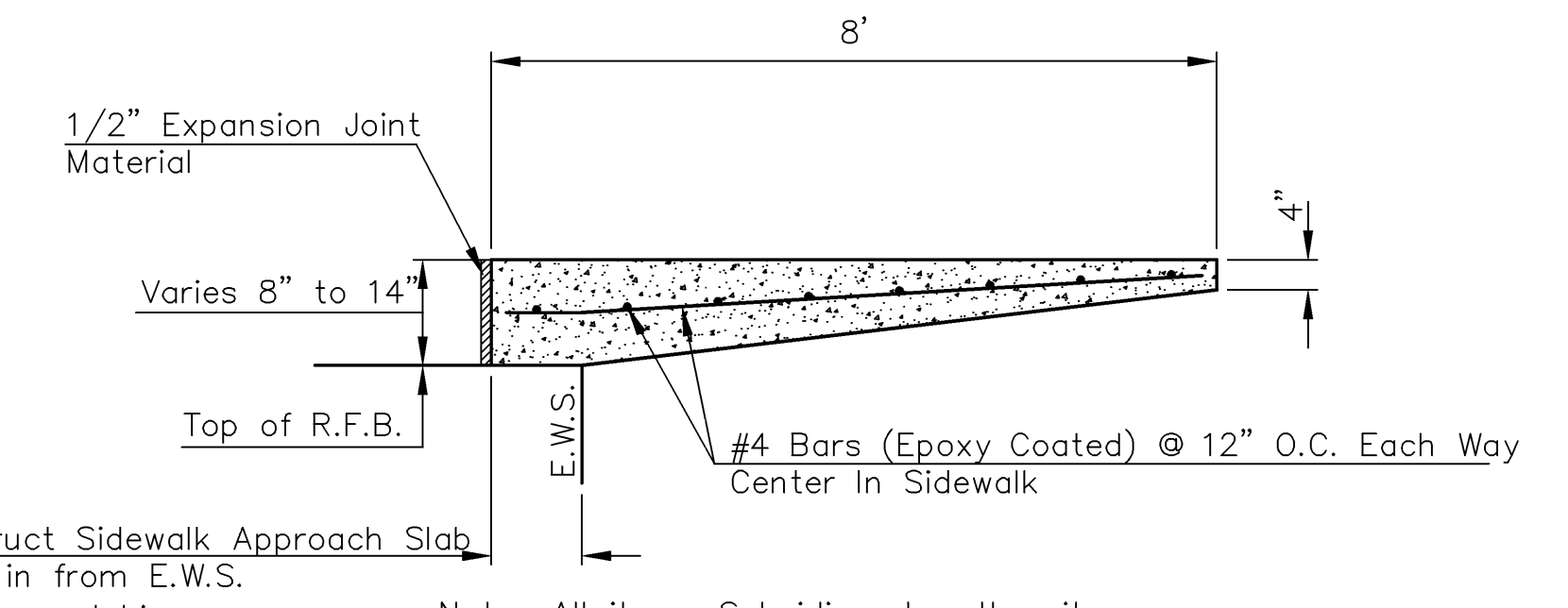
**TYPICAL SECTION THRU STRUCTURE
LINCOLN STREET**
Sta. 20+47.37 to Sta. 20+86.63



COMBINED CURB & GUTTER



**TYPICAL SECTION
LINCOLN STREET**
Sta. 20+27.22 to Sta. 20+47.37 &
Sta. 20+86.63 to Sta. 21+07.43



**SIDEWALK APPROACH SLAB & REINFORCEMENT
DETAIL AT E.W.S. OF R.F.B.**

GENERAL NOTES

PUBLIC AND PRIVATE UTILITY FACILITIES SHALL BE MOVED OR ADJUSTED AS NECESSARY BY THE OWNERS TO FIT THE NEW CONSTRUCTION UNLESS OTHERWISE NOTED ON THE PLANS OR IN THE PROPOSAL.

ALL SAW CUTS SHOWN ON THE PLANS SHALL NOT BE PAID FOR DIRECTLY, BUT SHALL BE CONSIDERED SUBSIDIARY TO OTHER ITEMS OF THE CONTRACT. THE DEPTH OF THE CUT SHALL BE FULL DEPTH.

ALL EASEMENTS, AND ADDITIONAL RIGHT-OF-WAY SHALL BE FURNISHED BY THE CITY.

EXCAVATION SHOWN TO BE WASTED SHALL BE WASTED ON SITES PROVIDED BY THE CONTRACTOR. THESE SITES SHALL BE APPROVED BY THE ENGINEER AS TO SUITABILITY, APPEARANCE, AND SITE LOCATION. LOCATIONS THAT, IN THE OPINION OF THE ENGINEER, WILL LEAVE AN UNSIGHTLY APPEARANCE WILL NOT BE APPROVED.

ALL DISPOSAL SITES MUST BE APPROVED BY THE KANSAS DEPARTMENT OF HEALTH AND ENVIRONMENT. MATERIAL EITHER STOCKPILED OR DISPOSED OF IN A FLOOD PLAIN WOULD REQUIRE A KANSAS STATE BOARD OF AGRICULTURE PERMIT. ANY MATERIAL DUMPED IN WATERS OF THE UNITED STATES OR WETLANDS IS SUBJECT TO U.S. CORPS OF ENGINEERS PERMITTING REGULATIONS.

ANY MATERIAL BURIED OR STOCKPILED BEYOND APPROVED CONSTRUCTION LIMITS WOULD REQUIRE ADDITIONAL ARCHEOLOGICAL INVESTIGATIONS UNLESS BURIED IN A PREVIOUSLY APPROVED BORROW LOCATION.

EXISTING PAVEMENT (CONCRETE AND ASPHALT) EXCAVATED AS PART OF THIS PROJECT SHALL BECOME THE PROPERTY OF THE CONTRACTOR AND BE DISPOSED OF ON SITES APPROVED BY THE ENGINEER.

FABRIC BASE REINFORCEMENT SHALL BE B X 1100 GEOGRID AS MANUFACTURED BY TENSAR CORPORATION OR APPROVED EQUAL. FABRIC BASE REINFORCEMENT SHALL BE INSTALLED IN ACCORDANCE WITH MANUFACTURER'S RECOMMENDATIONS. CRUSHED ROCK SHALL BE UNIFORMLY GRADED FROM 1-1/2" MAXIMUM SIZE TO NOT MORE THAN 10% PASSING A NO. 200 SIEVE. ROCK QUALITY SHALL BE THE SAME AS SPECIFIED FOR COARSE AGGREGATE FOR CONCRETE MIXES.

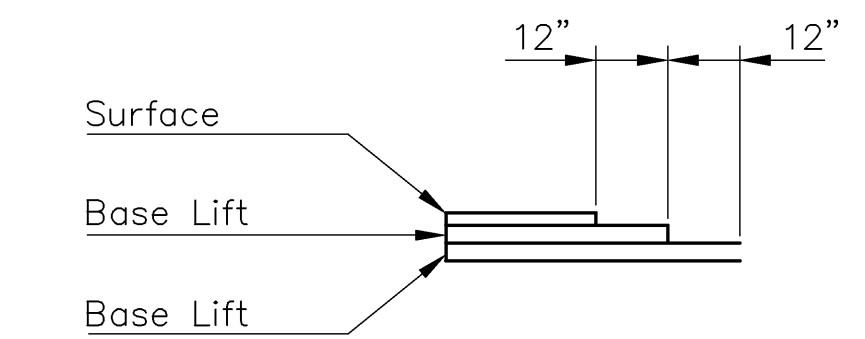
ROCK BASE IS TO BE COMPACTED AND SMOOTHED WITH A STEEL FACED ROLLER PRIOR TO PLACEMENT OF ASPHALT. TACK COAT WILL NOT BE APPLIED TO ROCK BASE.

A TACK COAT OF EMULSIFIED ASPHALT (SC-1H OR CSS-1H) SHALL BE APPLIED AT AN APPROXIMATE RATE OF 0.05 GALLONS PER SQUARE YARD BETWEEN EACH LIFT OF ASPHALTIC MATERIAL.

BITUMINOUS BASE AND ASPHALTIC CONCRETE WEARING SURFACE SHALL BE PLACED WITH A LAYDOWN MACHINE HAVING AUTOMATIC CONTROLS FOR LINE AND GRADE.

CONSTRUCTION JOINTS IN EACH LIFT SHALL BE STAGGERED A MINIMUM DISTANCE OF ONE (1) FOOT FROM JOINTS IN PRECEDING LIFTS AND PLACED SO THAT A JOINT WILL BE CONSTRUCTED ON THE CENTERLINE OF THE TOP LIFT.

THE ASPHALTIC CONCRETE PAVEMENT BETWEEN THE COMBINED CURB AND GUTTER SHALL BE PAID AS SQUARE YARDS OF 7" ASPHALTIC CONCRETE (BM-2)(PG 70-28)(5" BITUMINOUS BASE.)



TRANSVERSE CONSTRUCTION JOINTS

Transverse construction joints shall be constructed in flexible base pavements at locations where pavement joins existing flexible base pavement as shown by the details. All costs associated with the construction of the transverse joint shall be included in the bid price for Square Yards 7" ASPHALTIC CONCRETE (5" BITUMINOUS BASE)

CITY OF WICHITA		CFS Cook, Flatt & Strobel ENGINEERS, P. A.
ARMOUR BRANCH GYPSUM CREEK LINCOLN STREET OVER TYPICAL SECTIONS		
DESIGNED	SCALE NO SCALE	City of Wichita
DETAILED	DATE 12/12/08	
QUANTITIES	SHEET OF	Proj. No. 472-84703

J:\2008Proj\08566\DWGS\typical.dwg 7/20/2010 - 7:25am Imartin