

Ref. Ctr. Cor. Sec. 30-T27S-R2E = Sta. 10+00  
 Fnd. 1/2" Iron Pipe & 40d Nail  
 1. "x" Cut Cor. Sdkw. 68.92' NE  
 2. "x" Cut Cor. Sdkw. 68.80' SE  
 3. "x" Cut Cor. Sdkw. 56.03' SW  
 4. "+" Cut Top Curb 41.10' NW  
 5. In @ E-W Asph. Rd.  
 6. @ S. Bnd. Lane Gouverneur 14.0' W

Ref. P.O.T. @ Sta. 15+17.37  
 Set 1/2" Rebar @ P.O.T.  
 1. "x" Cut Top Curb NE ECR Dr. 20.29' SSE  
 2. "x" Cut Top Curb NW ECR Dr. 26.78' SW  
 3. "x" Cut Top Curb SW ECR Dr. 27.09' NE

Ref. P.O.T. @ Sta. 25+42.77  
 Set 1/2" Rebar @ P.O.T.  
 1. "x" Cut Top Curb NW ECR 19.96' SSW  
 2. "x" Cut Top Curb NE ECR 36.52' ESE  
 3. "x" Cut Top Curb SE ECR 32.62' ENE

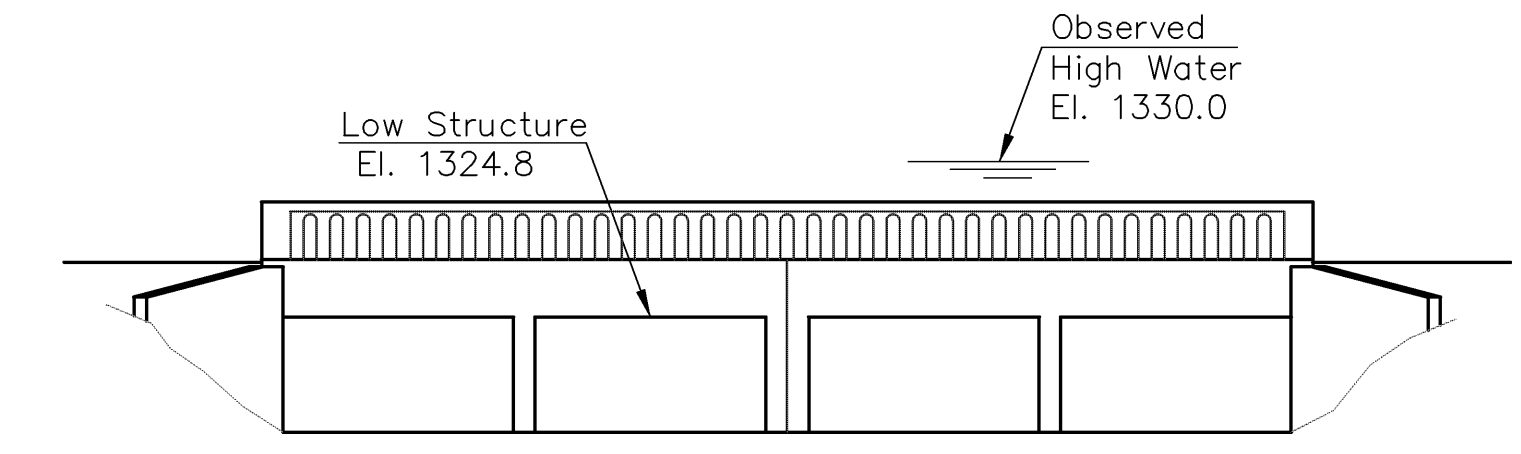
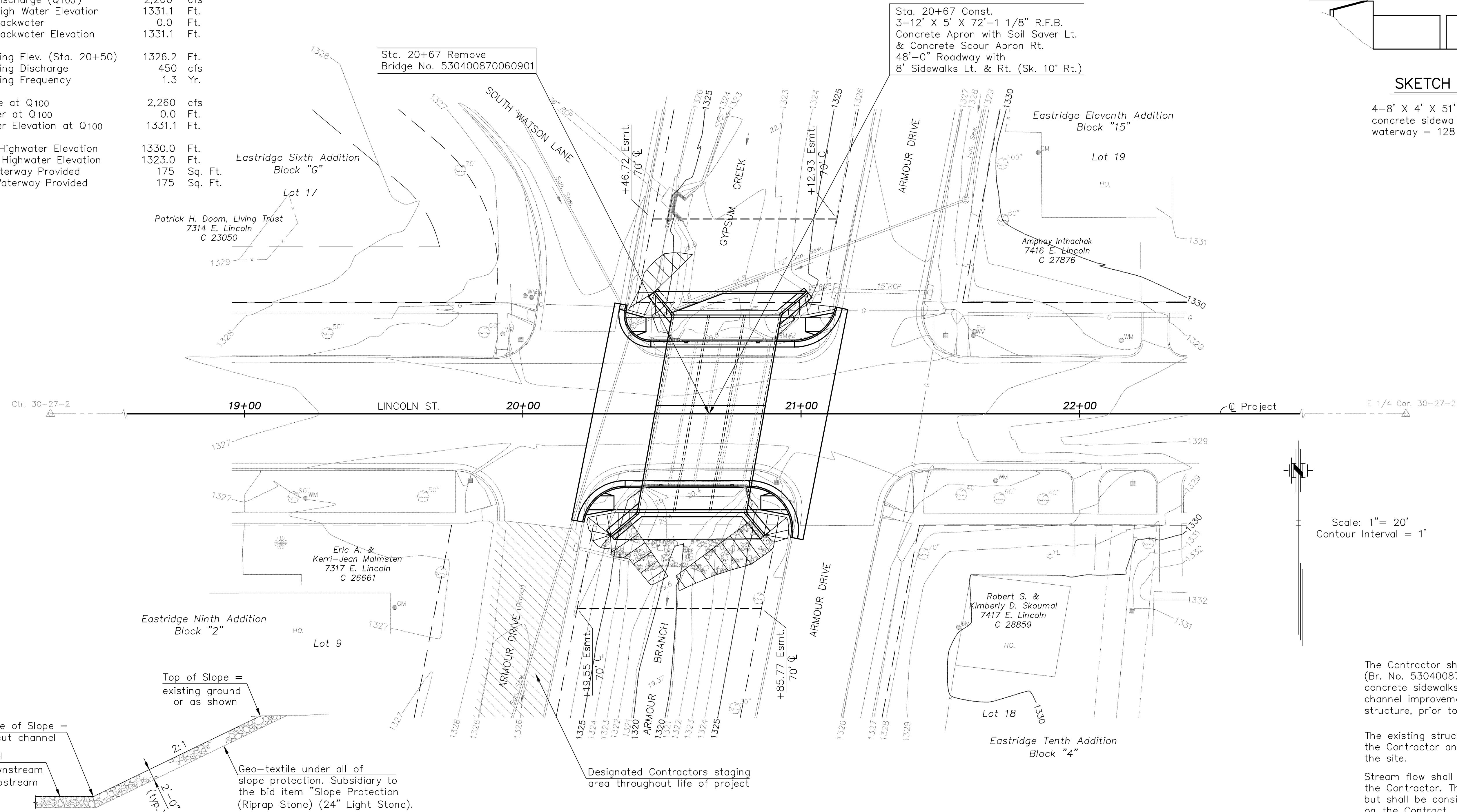
Ref. E 1/4 Cor. Sec. 30-T27S-R2E = Sta. 36+54.44  
 Fnd. 1/2" Iron Bar in Drill Hole In Conc.  
 1. In @ N-S Conc. Rd. (Rock Rd.)  
 2. In Line w/Asph. Rd. to W. (Lincoln Rd.)  
 3. "x" Cut Top Curb 68.10' NW  
 4. "x" Cut Top Curb 63.50' SW  
 5. "x" Cut Top Curb 32.75' E  
 6. "+" Cut NW Cor. Signal Pole Base 43.08' NE

STATE	PROJECT NO.	YEAR	SHEET NO.	TOTAL SHEETS
KANSAS	472-84703	2010	7	36

**DRAINAGE DATA**

Drainage Area	1.1	Sq. Mi.
Design Frequency	100	Yr.
Design Discharge (Q100)	2,260	cfs
Design High Water Elevation	1331.1	Ft.
Design Backwater	0.0	Ft.
Design Backwater Elevation	1331.1	Ft.
Overtopping Elev. (Sta. 20+50)	1326.2	Ft.
Overtopping Discharge	450	cfs
Overtopping Frequency	1.3	Yr.
Discharge at Q100	2,260	cfs
Backwater at Q100	0.0	Ft.
Backwater Elevation at Q100	1331.1	Ft.
Historic Highwater Elevation	1330.0	Ft.
Ordinary Highwater Elevation	1323.0	Ft.
Total Waterway Provided	175	Sq. Ft.
Design Waterway Provided	175	Sq. Ft.

**Sec. 30 T27S R2E**



**SKETCH OF EXISTING STRUCTURE**

4-8' X 4' X 51' R.C.B. with concrete curb & gutter, concrete sidewalks left & right and concrete rails. Existing waterway = 128 sq. ft. Bridge No. 530400870060901.

Scale: 1" = 20'  
 Contour Interval = 1'

The Contractor shall remove the existing structure (Br. No. 530400870060901) (4-8'x 4'x 51' RCB with concrete sidewalks and wingwalls, and excavate the channel improvements within the vicinity of the new structure, prior to its construction.

The existing structure shall become the property of the Contractor and shall be removed from the site.

Stream flow shall be carried through the project by the Contractor. This work shall not be paid for directly, but shall be considered Subsidiary to other items on the Contract.



**TYPICAL SECTION CHANNEL IMPROVEMENT**

(SHOWING SLOPE PROTECTION)  
 Note: The Contractor shall construct Slope Protection (Riprap Stone) (24" Light Stone) on the channel slopes as shown:  
 Downstream = 60 Sq. Yds.  
 Total = 60 Sq. Yds.

**Sec. 30 T27S R2E**

B.M. #1- "x" Cut Top Curb N. End Curb @ SW W. Side of Drive, 36.0' Lt. @ Sta. 16+00 Elev. 1335.21

B.M. #2- COW-BM Brass Cap Top NE Wingwall of 4-8'x4' RCB Stamped (City of Wichita Bench Mark 1325.56), 27.0' Lt. @ Sta. 20+90 Elev. 1326.29

PROJECT NO. 472-84703		<b>CFS</b> Cook, Flatt & Strobel ENGINEERS, P.A.
CONTOUR MAP		
LINCOLN STREET OVER ARMOUR BRANCH GYPSUM CREEK		DESIGNED KMB SCALE
STA. 20+67 CITY OF WICHITA		DETAILED DEG DATE
		QUANTITIES SHEET OF

J:\2008PROJ\08566\DWG\CONTR20 1"=20'