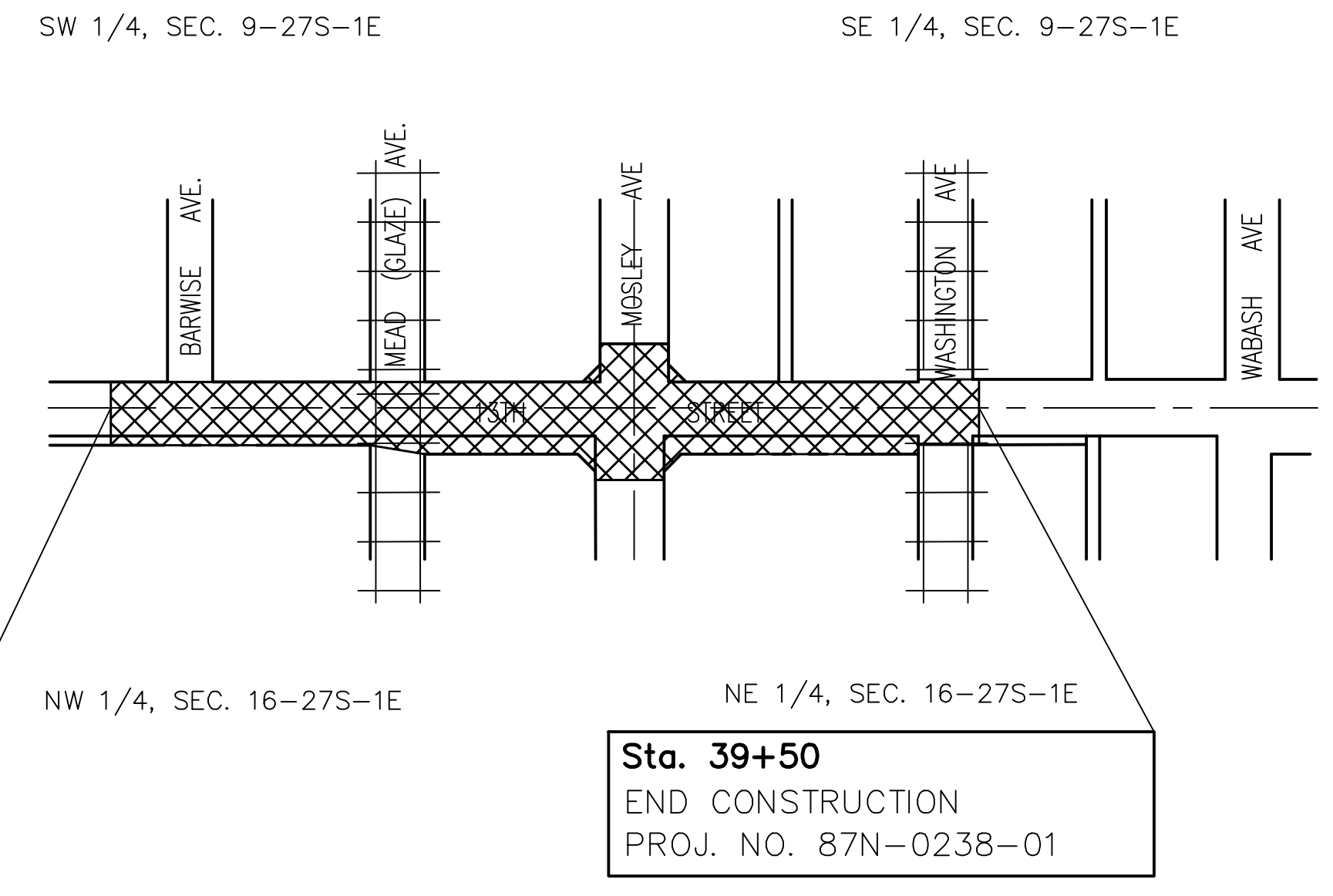
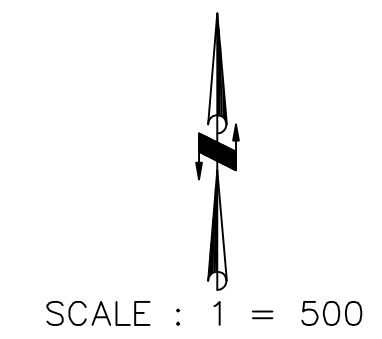


FHWA REG. NO.	STATE	PROJECT NO.:	YEAR	SHEET NUMBER	TOTAL SHEETS
7	KANSAS	87N-0238-01	2009	1	59

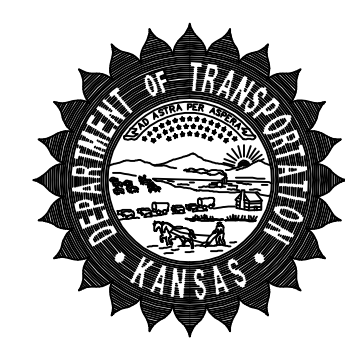
STP-N-23(801)

**GRADING
SURFACING
SIGNALIZATION**

ONE WAY TRAFFIC
TO BE MAINTAINED THROUGH
CONSTRUCTION. SEE SHEETS 43-46
FOR CONSTRUCTION TRAFFIC CONTROL PLAN.

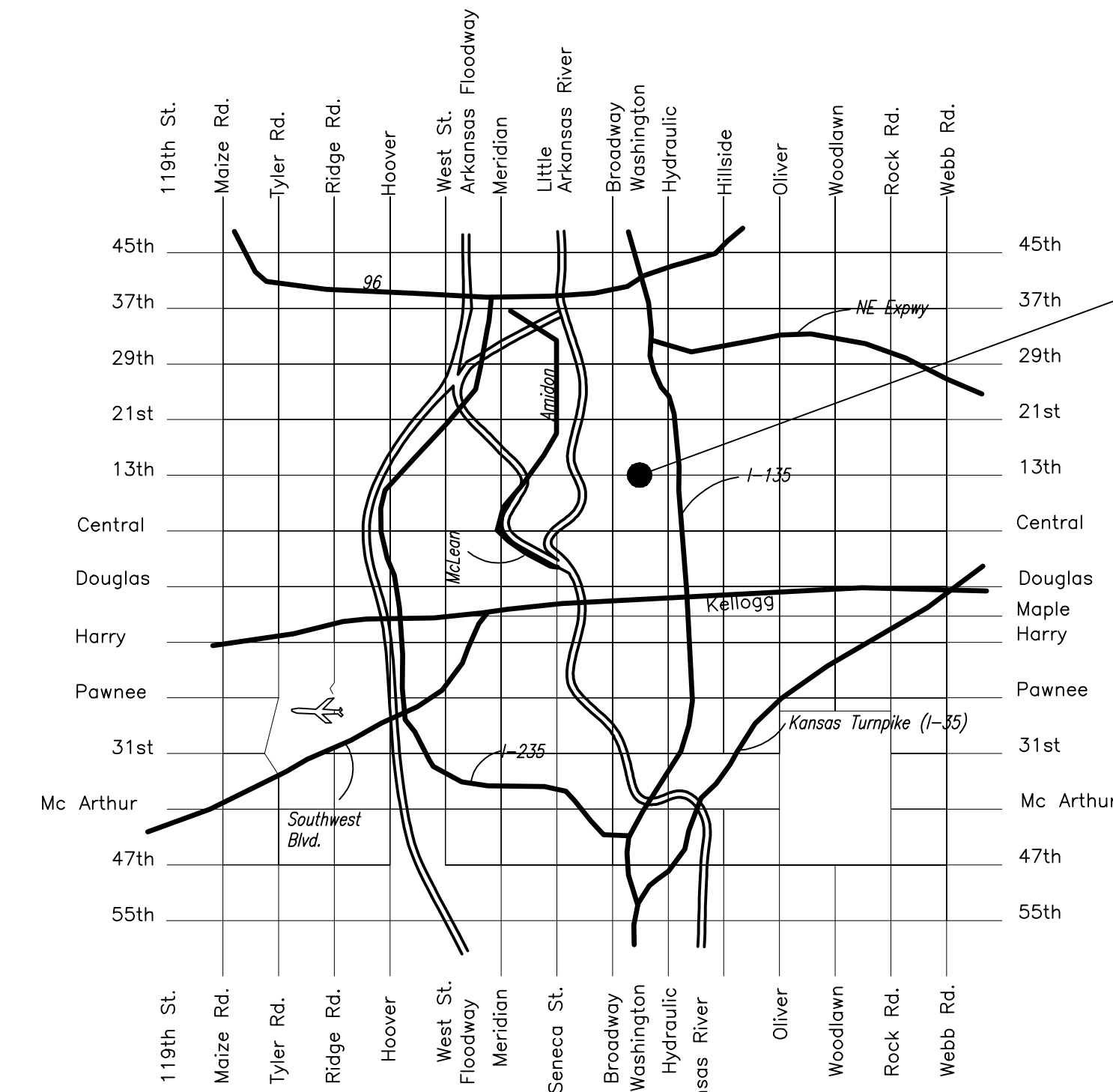


STATE OF KANSAS
DEPARTMENT OF TRANSPORTATION



PLAN AND PROFILE OF
FEDERAL AID PROJECT

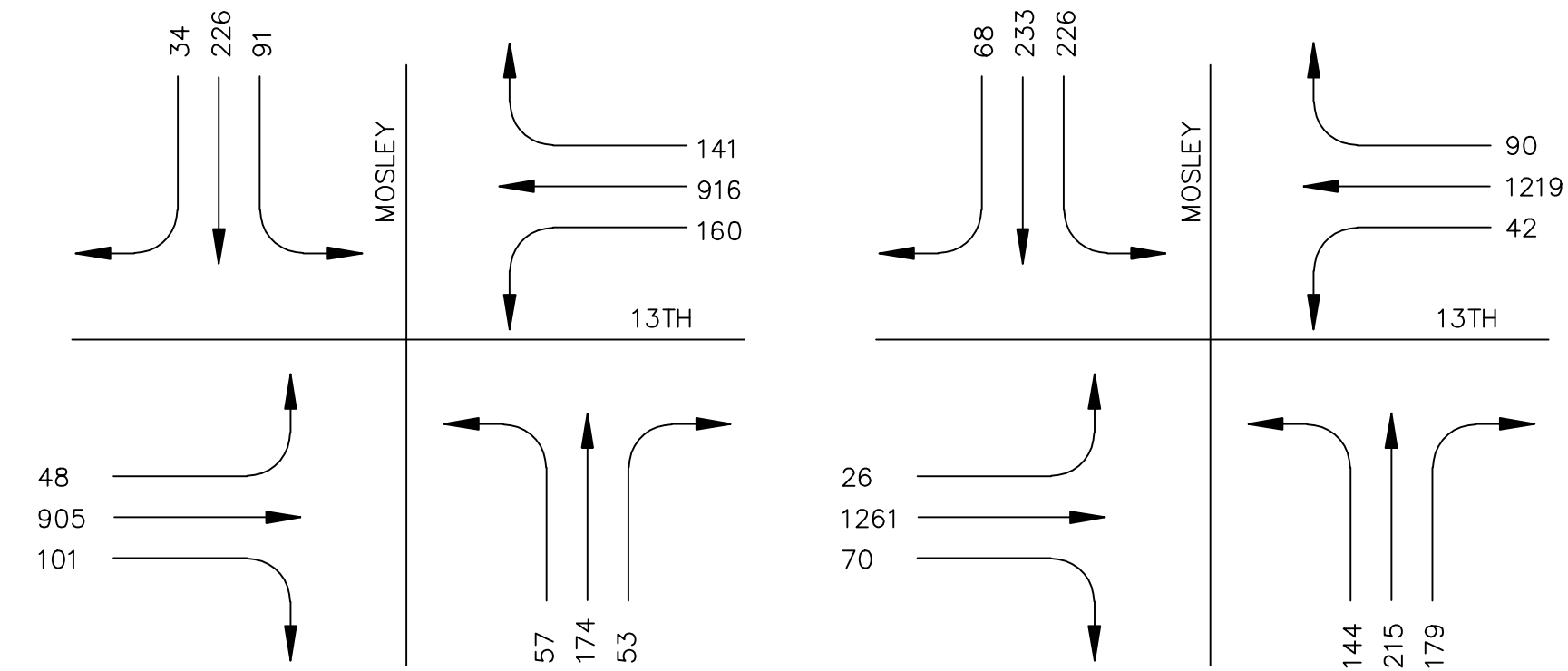
CITY OF WICHITA PROJECT #472-84269
OCA #706931/620544/636217
13TH & MOSLEY INTERSECTION
WICHITA, SEDGWICK COUNTY, KANSAS
POPULATION = 304,011



Sta. 26+99.15
BEGIN CONSTRUCTION
PROJ. NO. 87N-0238-01

DESIGN DESIGNATION

13TH & MOSLEY
AADT (2002) = 21,860
AADT (2030) = 30,750
T = 10 %
V = 35 M.P.H.
CLEAR ZONE = 6 Ft.



A.M. PEAK HOUR
7:00 A.M. TO 8:45 A.M.

P.M. PEAK HOUR
4:00 P.M. TO 5:45 P.M.

INDEX OF SHEETS

SHEET NUMBER	DESCRIPTION
1	TITLE SHEET
2	TYPICAL SECTION/GENERAL NOTES
3-5	PLAN SHEETS
6	JOINT PLAN
7-8	INTERSECTION DETAIL
9	STORM SEWER KEY MAP
10-11	STORM SEWER PLAN-PROFILE
12	SANITARY SEWER PLAN-PROFILE
13-15	WATER LINE PLANS-PROFILE
16	STANDARD TYPE "P" MANHOLES
17	STANDARD WATER DETAILS
18	C.O.W. STANDARD DRIVE ENTRANCE DETAIL
19	SUMMARY OF QUANTITIES
20	CONCRETE PAVEMENT DOWEL JOINTED NON-REINFORCED
21	RR X-INGS FOR NEW CONCRETE PAVEMENT
22	CURB, GUTTER, AND COMBINED CURB AND GUTTER
23	VALLEY GUTTER AND WHEELCHAIR RAMP DETAILS
24	SIDEWALK AND STEPS DETAIL
25	STANDARD TYPE I INLET
26-30	EROSION CONTROL-BEST MANAGEMENT PRACTICES
31	TRAFFIC SIGNAL PLAN
32	SIGNAL WIRING DIAGRAM
33	TRAFFIC SIGNAL QUANTITIES SHEET
34	SERVICE-JUNCTION BOX, CONTROLLER PAD CONSTRUCTION-INSTALLATION DETAILS
35	STEEL SIGNAL POLE ASSEMBLY DETAILS
36	TRAFFIC SIGNAL PEDESTAL-CONCRETE BASE DETAILS
37	PAVEMENT MARKING PLAN
38	TYPICAL MISC. PAVEMENT MARKING DETAILS
39	SUMMARY AND RECAPULATION OF PAVEMENT MARKING QUANTITIES
40	TRAFFIC CONTROL GENERAL NOTES
41-43	TEMPORARY SIGNALIZATION
44-47	TRAFFIC CONTROL PLANS
48	SUMMARY OF DEVICES AND RECAPULATION OF QUANTITIES
49	DESIGN DETAILS FOR BARRICADES, CHANNELIZING DEVICES AND SIGN MOUNTING LOCATIONS
50	TYPICAL TRAFFIC CONTROL SIGNS
51	COORDINATE POINTS LIST
52-59	CROSS SECTIONS

DATE	BY	SURVEY	CADD TECHNICIAN	DESIGNERS	SQUAD

LEGEND

	= Existing Fence		= Existing Gas Meter
	= Concrete		= Underground Electric
	= Guy Anchor		= Underground Telephone
	= Existing Traffic Signal		= Existing Power Pole
	= Existing Stone Wall		= Cedar
	= Existing Sign		= Shrub
	= Proposed Fire Hydrant		= Tree
	= Existing Fire Hydrant		= Water Valve
	= Existing Storm Water Sewer		= Existing Water Valve
	= Railroad Tracks		= Existing Gas Marker
	= Proposed Manhole		= Centerline
	= Overhead Electric		
	= Existing Sanitary Sewer		
	= Existing Water Line		
	= Existing Gas Line		
	= Existing Manhole		

GROSS LENGTH OF PROJECT	1,250.85 Ft.
EXCEPTIONS	0.00 Ft.
ADDITIONS	0.00 Ft.
NET LENGTH OF PROJECT	1,250.85 Ft.
NET LENGTH OF BRIDGES	0.00 Ft.
NET LENGTH OF ROAD	1,250.85 Ft.

Pavers, Inc. - Contractor
J. Westhoff - City of Wichita, Field Project Engineer
T. Anthis - City of Wichita, Inspector
As-built
Release Date: 8/23/2010
SS PDF: APRosas 8/5/2010
APRosas (WL)

APPROVED-DATE
JIM ARMOUR, P.E.
CITY ENGINEER
CITY OF WICHITA, SEDGWICK COUNTY, KANSAS

