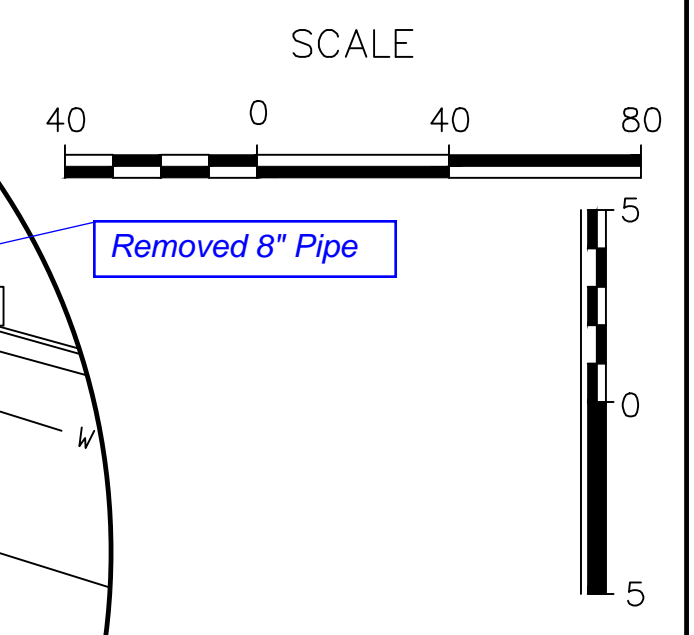
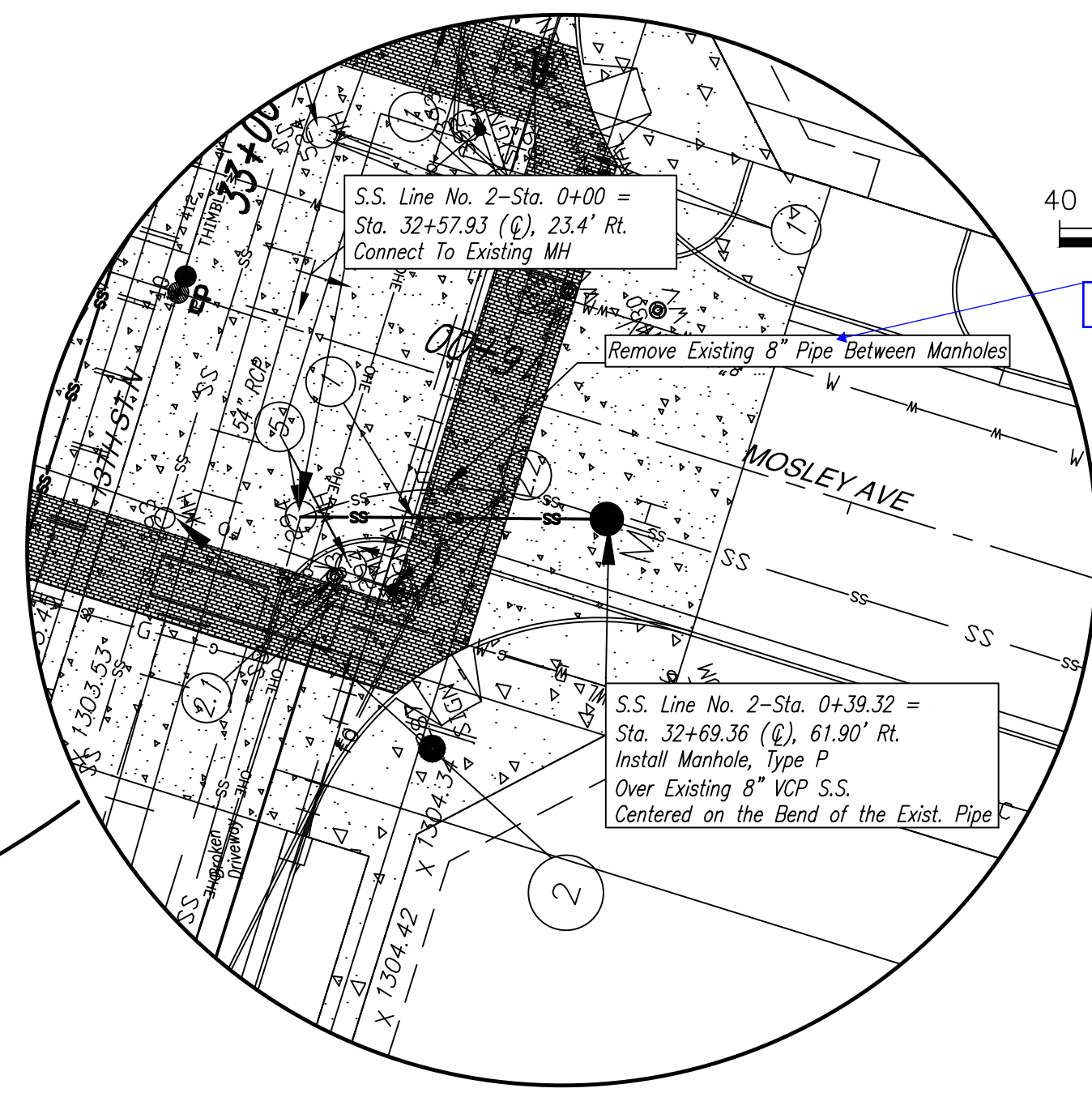
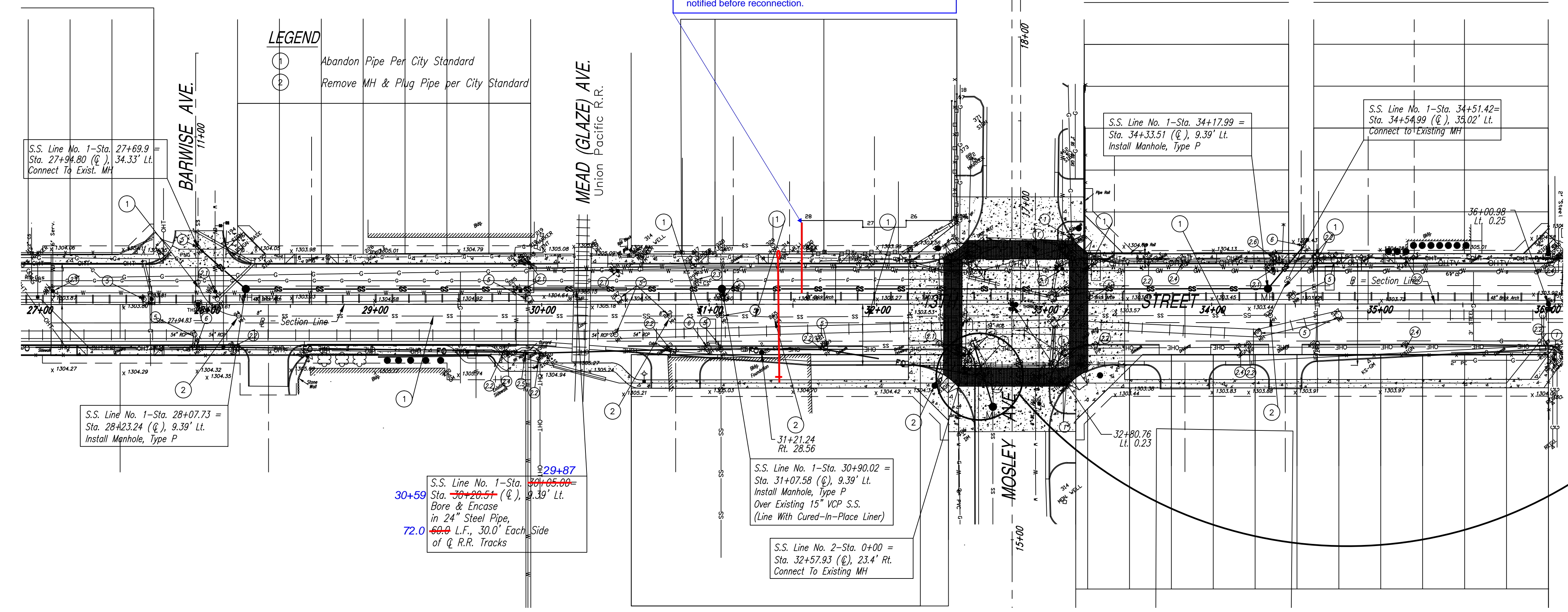


Note: Unknown/unmarked 6" VCP drain line from Cargill cooling towers to 48" brick arch @ approx. Sta. 31+55 Lt. Hit and damaged w/ our 8" pvc SS (L-1) installation. Repairs made with 6" pvc to brick arch across SS excavation. Approx. 6" clearance above SS (L-1) at this location. COW SWS Dept. notified before reconnection.

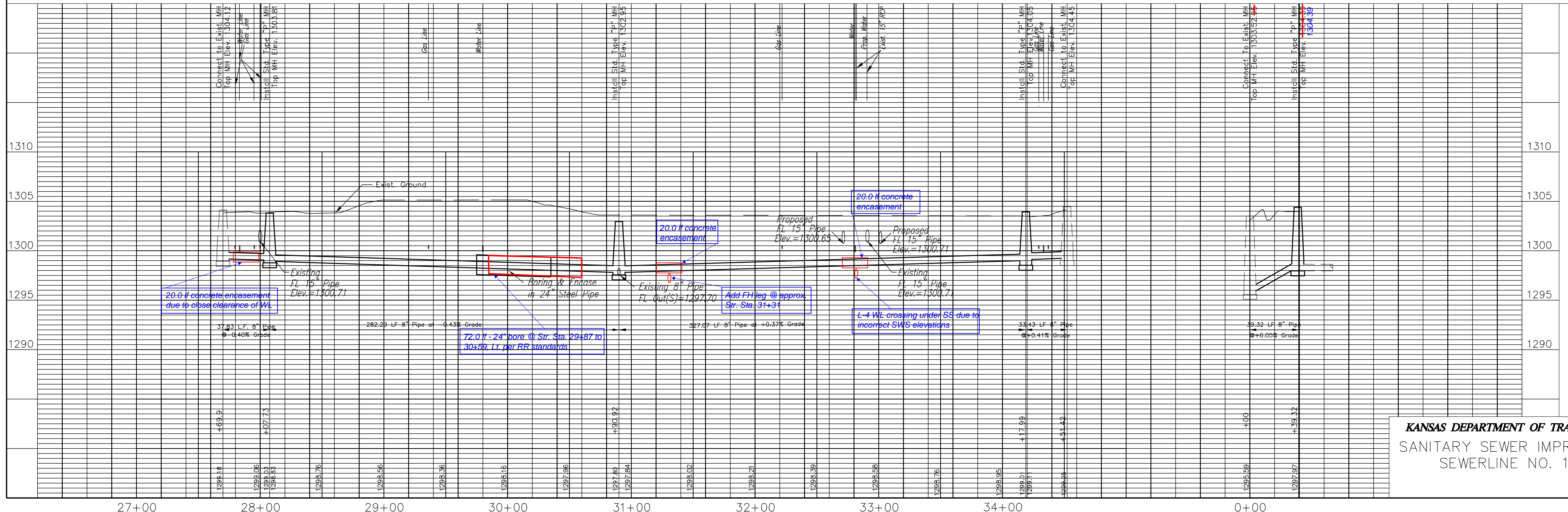
BY	DATE
REFERENCES NOTED	CHECKED



LINE NO. 1

LINE NO. 2

- NOTE:
1. Sand backfill, flush and vibrate all trenches in accordance with City of Wichita specifications.
 2. See Sheet 16 for Manhole Detail



KANSAS DEPARTMENT OF TRANSPORTATION
SANITARY SEWER IMPROVEMENTS
SEWERLINE NO. 1 & 2