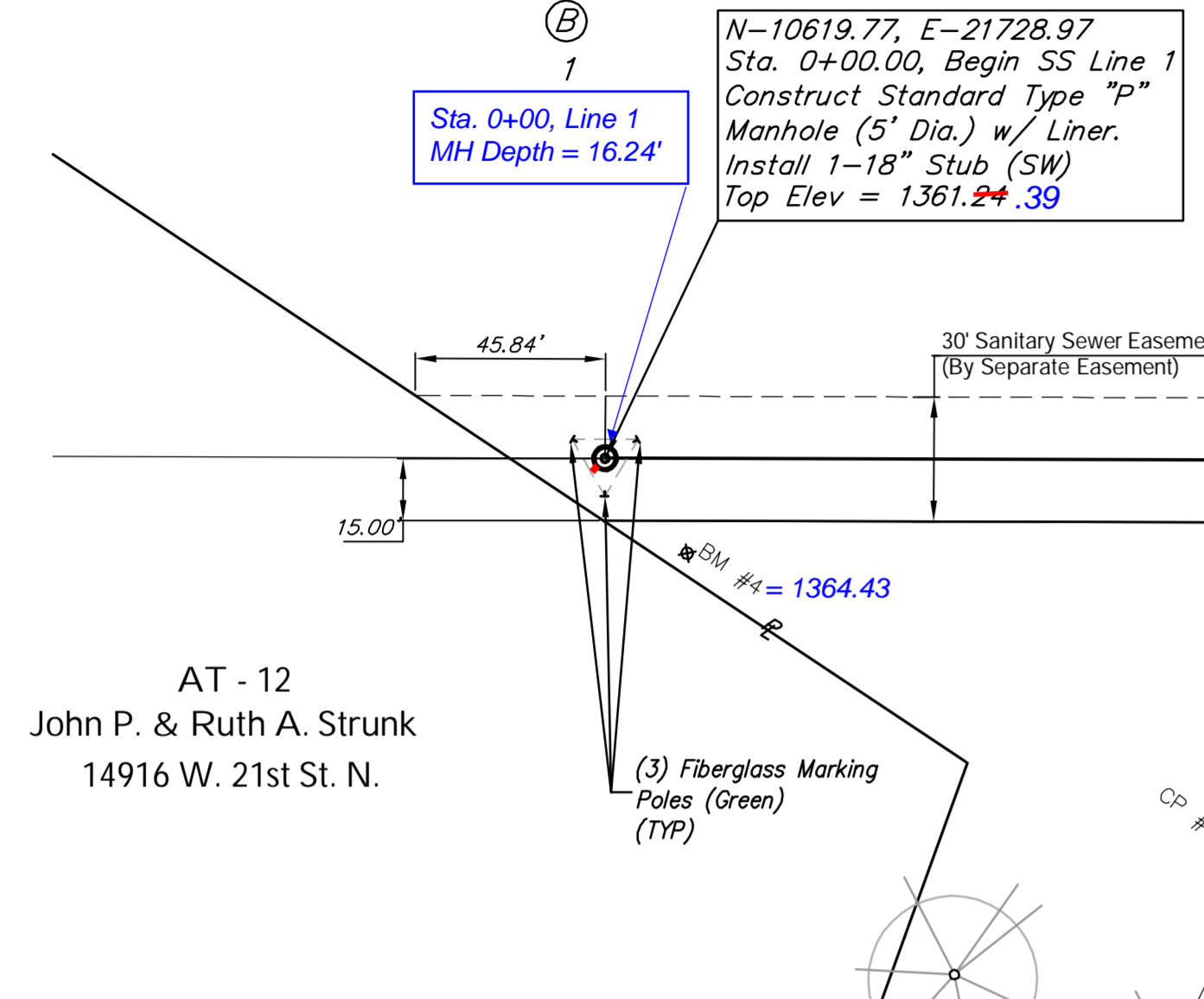


BENCHMARK:

BM #4: Railroad Spike in the North Face of a 36" Hackberry Tree at the West End of the Tree Row on the East Side of Gate.
Elev. = 1364.43 (NAVD 88)

VIA CHRISTI - WEST CAMPUS ADDITION

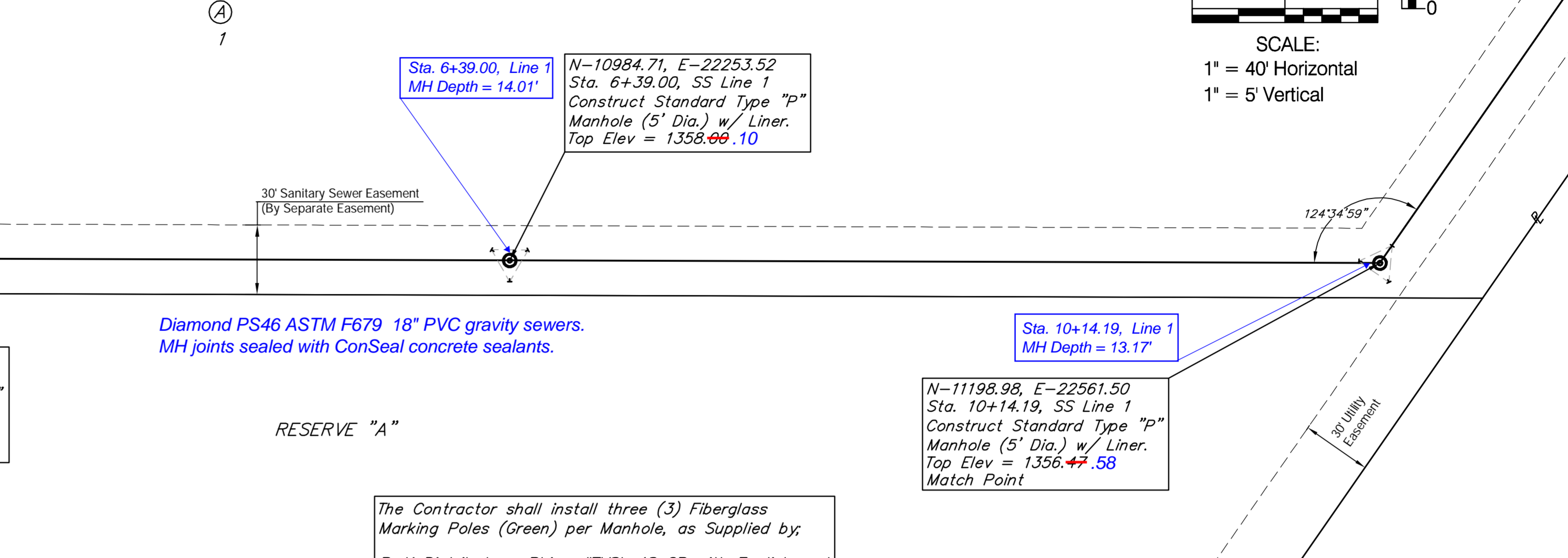


AT - 12
John P. & Ruth A. Strunk
14916 W. 21st St. N.

N-10619.77, E-21728.97
Sta. 0+00.00, Begin SS Line 1
Construct Standard Type "P"
Manhole (5' Dia.) w/ Liner.
Install 1'-18" Stub (SW)
Top Elev = 1361.24.39

Sta. 0+00, Line 1
MH Depth = 16.24'

VIA CHRISTI - WEST CAMPUS ADDITION



Sta. 6+39.00, Line 1
MH Depth = 14.01'

N-10984.71, E-22253.52
Sta. 6+39.00, SS Line 1
Construct Standard Type "P"
Manhole (5' Dia.) w/ Liner.
Top Elev = 1358.00.10

CAUTION!
Existing
12" Water
Crossing

Sta. 2+63.69, Line 1
MH Depth = 20.05'

N-10770.36, E-21945.42
Sta. 2+63.69, SS Line 1
Construct Outside Drop Type "P"
Manhole (5' Dia.) w/ Liner.
Connect Ex. 8" SS (NW)*
Top Elev = 1364.63

Back Fill with Sand, Flush,
& Vibrate from Sta. 2+00
to 2+42.

Diamond PS46 ASTM F679 18" PVC gravity sewers.
MH joints sealed with ConSeal concrete sealants.

Sta. 10+14.19, Line 1
MH Depth = 13.17'

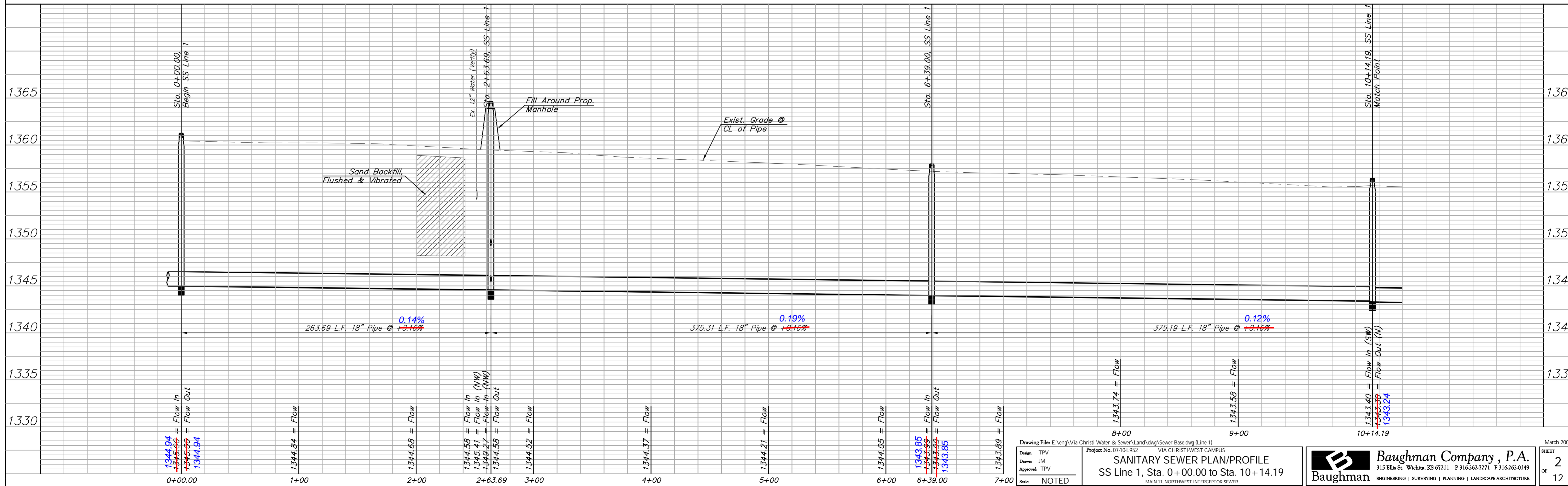
N-11198.98, E-22561.50
Sta. 10+14.19, SS Line 1
Construct Standard Type "P"
Manhole (5' Dia.) w/ Liner.
Top Elev = 1356.47.58
Match Point

* Record Information Indicates the Ex. 8" Sewer from Via Christi is constructed to the Centerline of the Proposed Manhole at Sta. 2+63.69. The Contractor Shall be Responsible for Connecting the Ex. 8" SS to this Main. Cost to be INCIDENTAL to the Construction of the Manhole.

Reseed 1,015 L.F. According to General Note 18 as Measured along the Sewer Line from Sta. 0+00.00 to Sta. 10+14.19.

The Contractor shall install three (3) Fiberglass Marking Poles (Green) per Manhole, as Supplied by, R-K Distributors, Rhino #TVSL 48 GB with English and Spanish Decal # SD-53743) or Power Solutions LLC, Electromark Triview 48" Post with one English and one Spanish Decal. Fiberglass Marker Shall not be Paid for Directly, but Shall be Considered INCIDENTAL to the Manhole Construction.

LINE 1



Drawing File: E:\eng\Via Christi Water & Sewer\Land\dwg\Sewer Base.dwg (Line 1)
Project No. 0710E952
VIA CHRISTI WEST CAMPUS
SANITARY SEWER PLAN/PROFILE
SS Line 1, Sta. 0+00.00 to Sta. 10+14.19
MAIN 11, NORTHWEST INTERCEPTOR SEWER

Baughman Company, P.A.
315 Ellis St., Wichita, KS 67211 P 316-262-0149 F 316-262-0149
ENGINEERING | SURVEYING | PLANNING | LANDSCAPE ARCHITECTURE

March 2009
SHEET 2 OF 12