

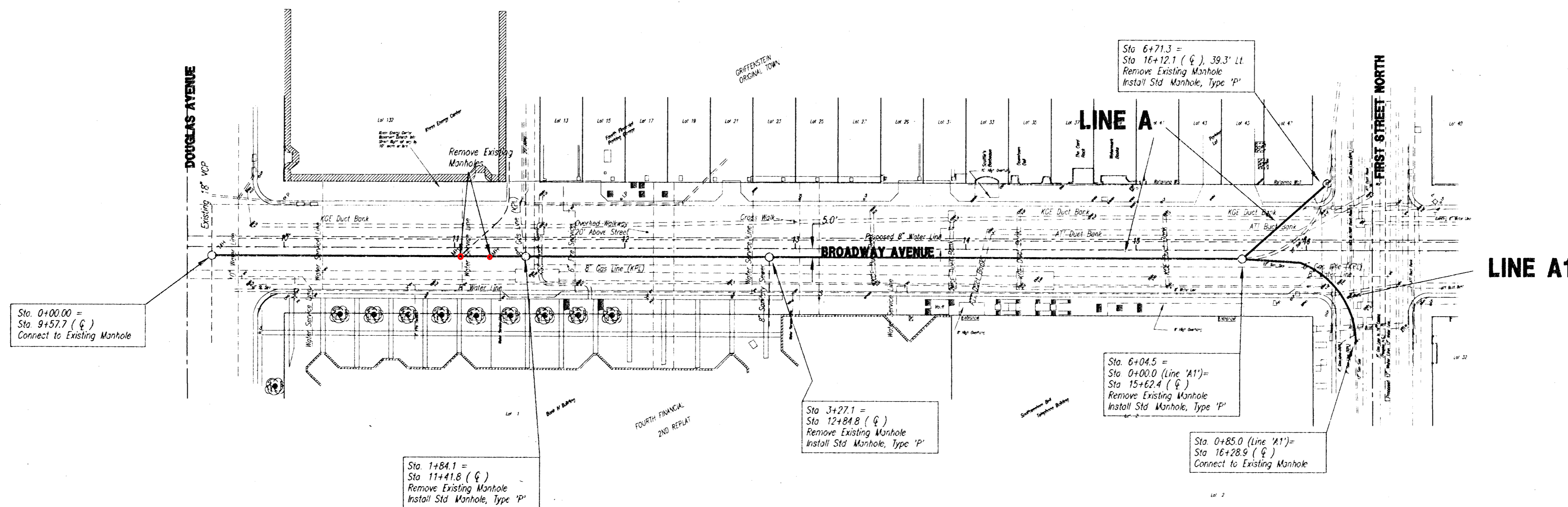
RITCHIE/WB CARTER - CONTRACTOR
 SMITH - CITY OF WICHITA, INSPECTOR
 AS-BUILT
 RELEASE DATE: 05/03/1999
 :APROSas 07/27/2010

468-82689 OCA 621664



SCALE:

PLAN : 1" = 40'
 PROFILE : 1" = 40' (H)
 1" = 5' (V)

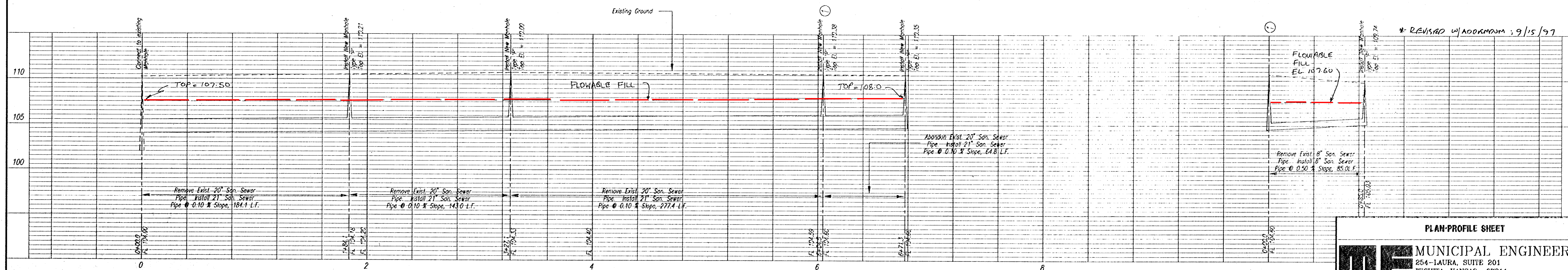


NOTES:

- All sewer lines except Line A (Sta. 6+04.5 to Sta. 6+71.3) are to be replaced at the same horizontal and vertical alignment as existing (Except for minor defects in existing alignment).
- See companion Water Distribution project for locations of concrete enclosures along new sewer pipes.
- CONTRACTOR MAY USE HOPE PIPE FOR LINE 'A1'. *

LINE A

LINE A1



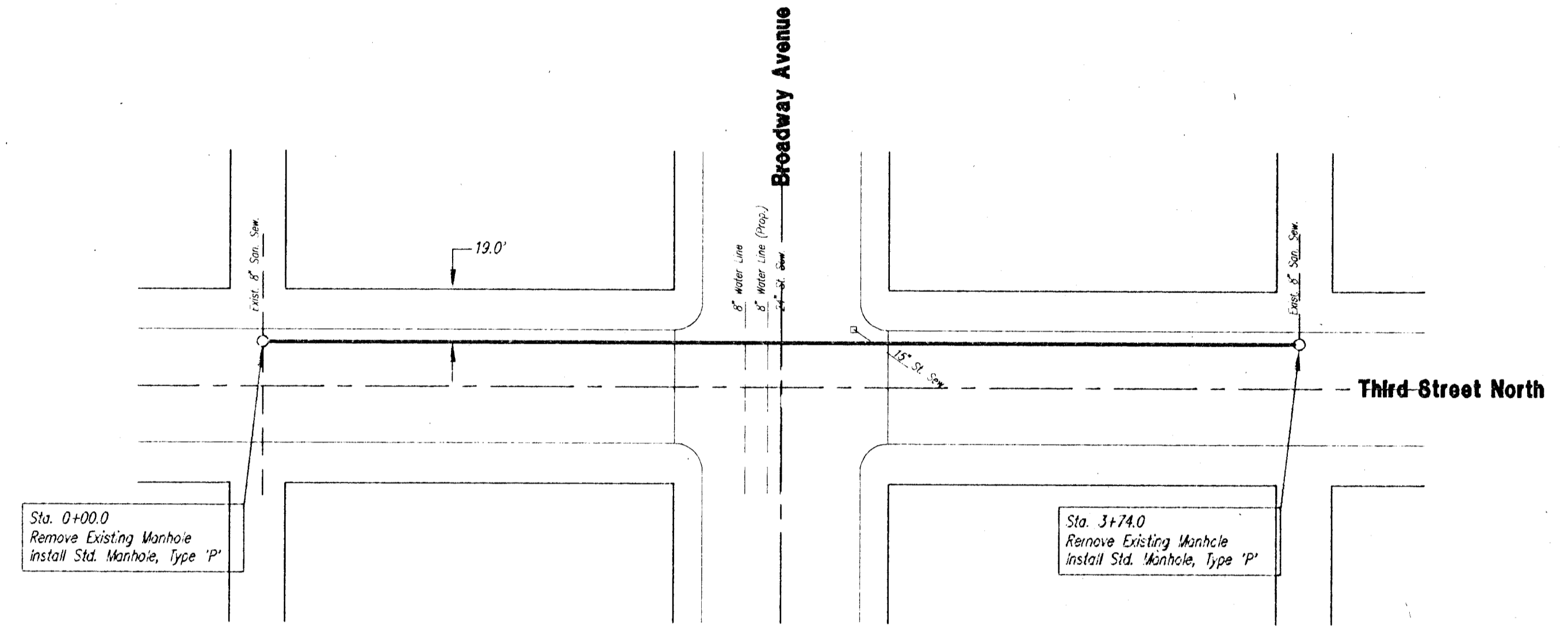
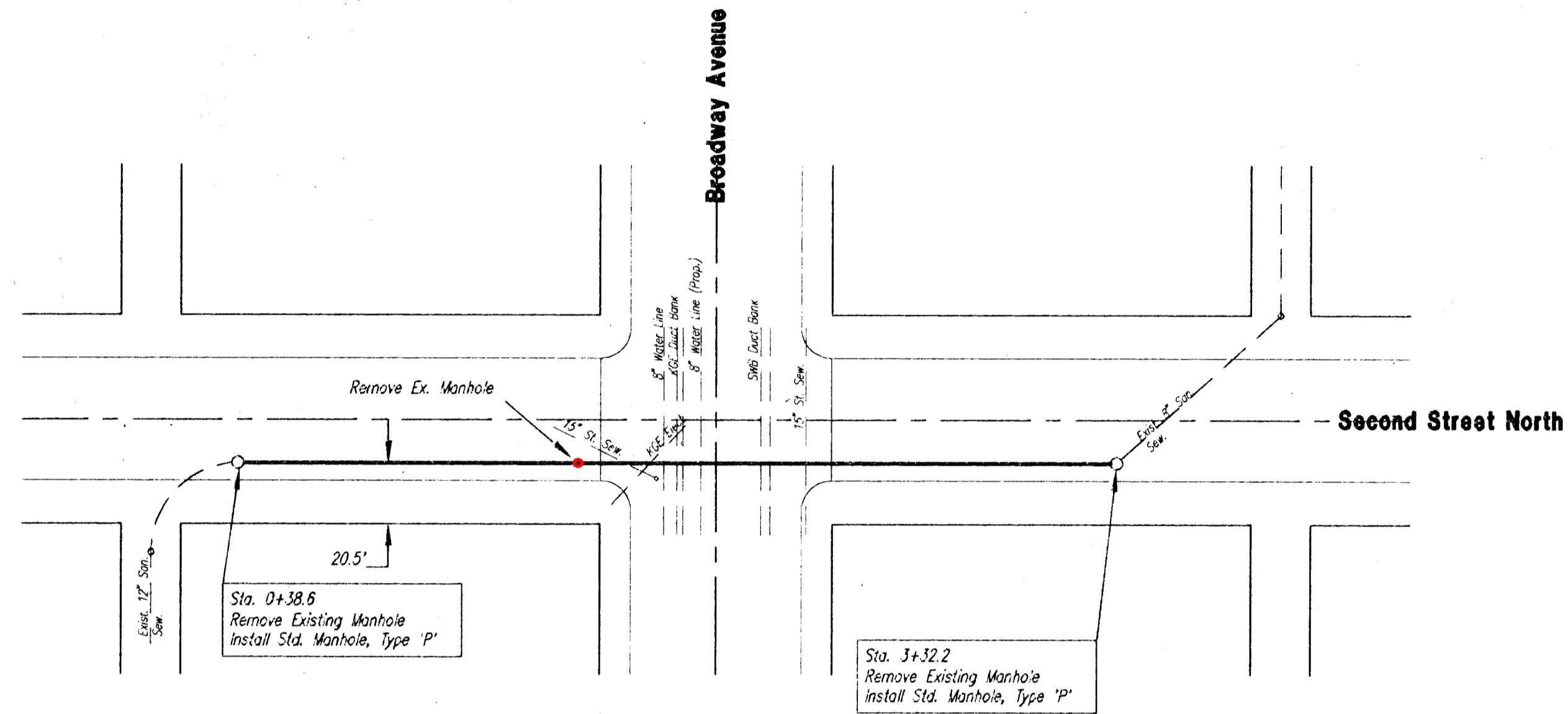
* REVISAD w/ ADDENDUM ; 9/15/97

PLAN-PROFILE SHEET

ME MUNICIPAL ENGINEERS
 254-LAURA, SUITE 201
 WICHITA, KANSAS 67211
 316-262-3842 SHEET

D:\LPLUG\DATA\00000-04\DRN\MUSE41.MXD JUN 30 08:55:45 1997

SCALE:
 PLAN : 1" = 40'
 PROFILE : 1" = 40' (H)
 1" = 5' (V)

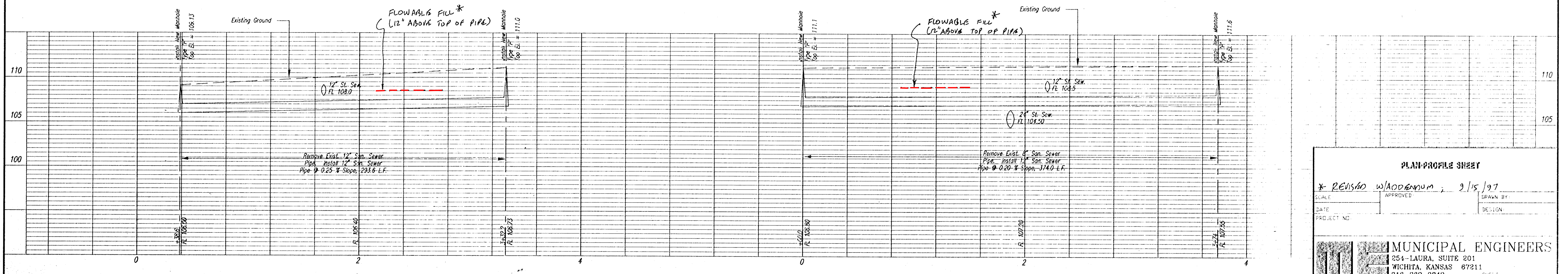


Pavement Replaced (Perm.):
 From Sta. 0+38.6 to Sta. 1+59.8
 From Sta. 2+36.8 to Sta. 3+32.2

Pavement Replaced (Temp.):
 From Sta. 1+59.8 to Sta. 2+36.8

Pavement Replaced (Perm.):
 From Sta. 0+00.0 to Sta. 1+48.5
 From Sta. 2+25.5 to Sta. 3+74.0

Pavement Replaced (Temp.):
 From Sta. 1+48.5 to Sta. 2+25.5



PLAN-PROFILE SHEET

* **REVISAO** Włodanum, 2/15/97

SCALE	APPROVED	DRAWN BY
DATE		DESIGN
PROJECT NO.		

MUNICIPAL ENGINEERS
 254-LAURA, SUITE 201
 WICHITA, KANSAS 67211
 316-262-3842

D:\PLANS\OCA\621664\OCC\DWG\SEW3.MED JUL 30 05:00:22 1997