

# SANITARY SEWER IMPROVEMENTS

## NORTH ELEMENTARY SCHOOL ADDITION

### PRIVATE PROJECT NO. 2034 PPS (607861)

## BENCHMARK

BENCH MARK: CHISELED SQUARE ON THE TOP OF CURB  
AT THE SOUTH CURB RETURN AT THE SOUTHEAST  
CORNER OF 33RD ST. N. AND ARKANSAS AVE.  
ELEVATION = 1317.54 (NAVD88)

## GENERAL NOTES

1. Contractor will be required to provide a minimum advance notice of seventy-two (72) hours to utility companies prior to starting any excavation as follows:

Kansas One-Call                      687-2470 or 811

The Contractor must notify the following in case of an emergency:

Cox Communications                260-7204  
Kansas Gas Service                832-3126  
Westar                                383-8600  
Black Hills Energy                1-800-303-0357  
AT&T                                 1-800-286-8313  
City of Wichita Water Utilities    262-6000

2. Existing utilities and their location, as shown on the plans, represent the best information obtainable for design. Location information has been obtained from the various utility companies and is either from company record drawings or company-provided field locations. The Contractor will be required to work around existing utilities within the right-of-way which do not conflict with proposed construction.

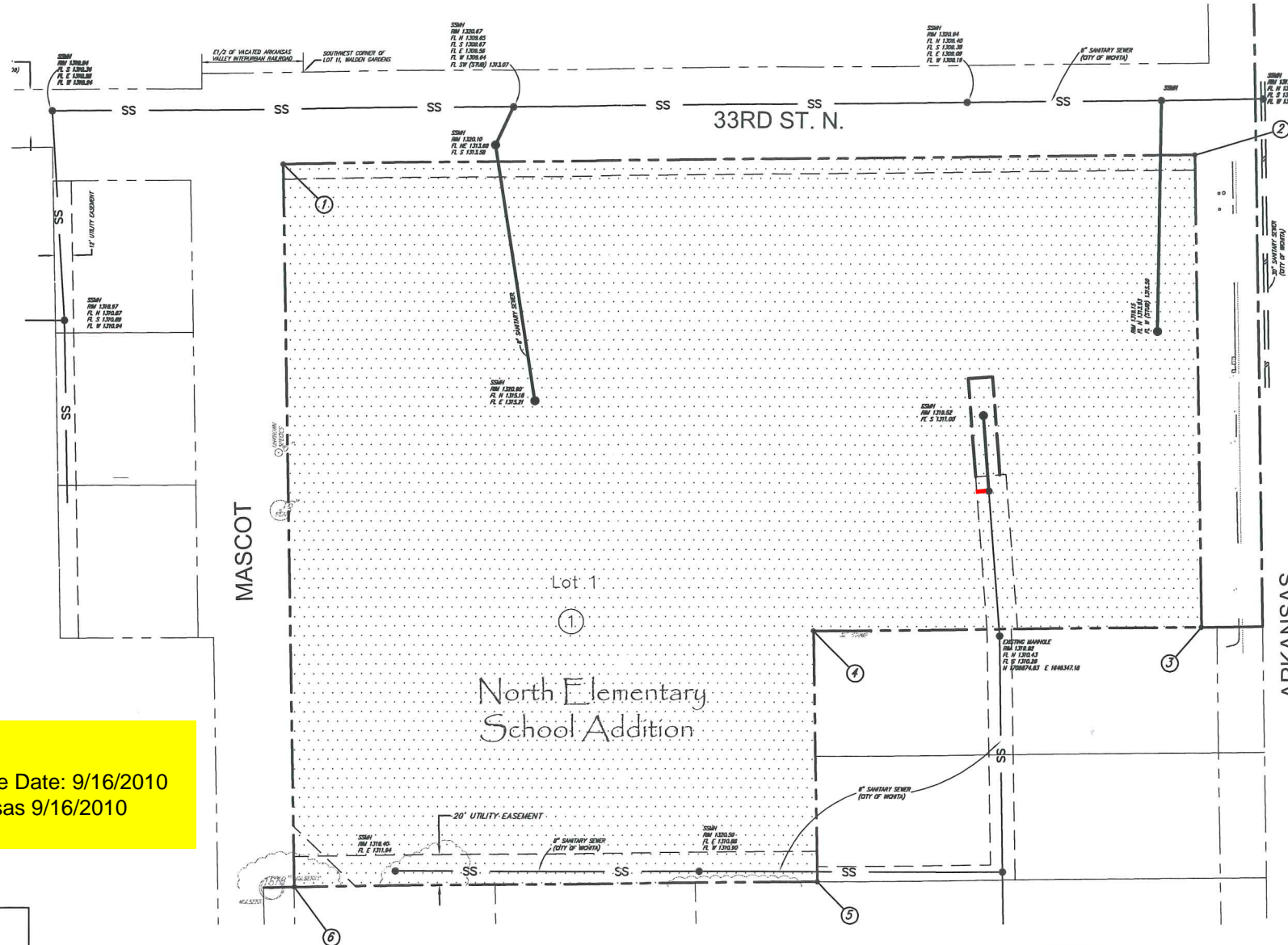
3. A saw cut of the full depth of existing surface courses or pavement thickness shall be provided at locations where proposed construction abuts an existing surface course or pavement for which partial removal of that surface or pavement is required, except when such saw cuts are within three (3) feet of an existing joint the limits of removal shall be extended to the existing joint.

4. This project is limits of a larger project which will include building construction. The General Contractor for the project will submit a Storm Water Pollution Prevention Plan for the entire project prior to beginning any work on this project.

5. This project is to be constructed in accordance with City of Wichita Standard Specifications for the Construction of City Projects and Policy on Construction of Infrastructure by Private Contract.

6. No work shall begin on this project before required bonds are submitted to the City of Wichita, and the project inspector has been notified.

7. All areas of public R/W disturbed by construction of this project are to be restored in accordance with Administrative Regulation AR 6.5 of the City of Wichita.



## INDEX

1. TITLE SHEET
2. SANITARY SEWER PLAN
3. TYPE P MANHOLE DETAILS

APPROVED AS NOTED  
BY CITY ENGINEER OF WICHITA

Sanitary Sewers Julianne Kollmas 4-2-10

Storm Sewers \_\_\_\_\_

Driveway Approaches \_\_\_\_\_

Water Mains \_\_\_\_\_

Paving \_\_\_\_\_

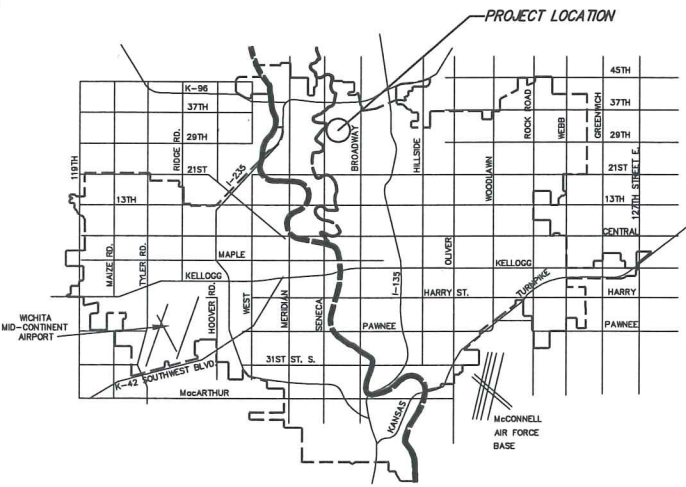
NOTE TO CONTRACTORS

Inspection and testing for this project are to be provided by a Licensed Consulting Engineering Firm under contract with the Owner/Developer. Said inspection to be in accordance with the City of Wichita standard construction engineering practices and certified by a Licensed Professional Engineer. No work shall be performed in dedicated easements or public right-of-way by the Contractor without such inspection, nor shall any work be commenced without written authorization by the City Engineer.

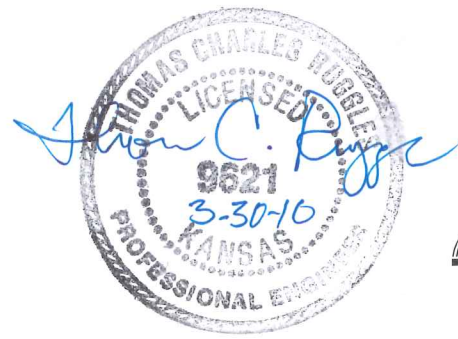
Stub  
Release Date: 9/16/2010  
:APRosas 9/16/2010

### COORDINATE CONTROL TABLE

CONTROL NO.	LOCATION	DESCRIPTION	NORTHING	EASTING
①	NW CORNER OF NORTH ELEM. SCHOOL ADD.	(5/8" R&B CAP)	1707184.36	1645875.67
②	NE CORNER OF NORTH ELEM. SCHOOL ADD.	(5/8" R&B CAP)	1707190.41	1646474.65
③	ESE CORNER OF NORTH ELEM. SCHOOL ADD.	(5/8" R&B CAP)	1706880.61	1646479.92
④	CENTRAL CORNER OF NORTH ELEM. SCHOOL ADD.	(5/8" R&B CAP)	1706878.03	1646224.93
⑤	SSE CORNER OF NORTH ELEM. SCHOOL ADD.	(5/8" R&B CAP)	1706713.14	1646227.73
⑥	SW CORNER OF NORTH ELEM. SCHOOL ADD.	(5/8" R&B CAP)	1706709.76	1645883.38



IMPROVEMENT DISTRICT



As-builts:  
Contractor : Mie's Construction  
Inspector : Tom Jones, K.E. Miller Engineering  
pdf by: TJ, 08/20/2010

**CITY OF WICHITA, KANSAS**  
**JAMES ARMOUR, P.E. - CITY ENGINEER**

**Ruggles & Bohm, P.A.**  
Engineering, Surveying, Land Planning  
924 North Main                      (316) 264-8008  
Wichita, Kansas 67203            (316) 264-4621 fax  
www.rbkansas.com                 E-mail: info@rbkansas.com  
RB Project 3008E