

Lateral 415, Four Mile Creek Sewer BELLECHASE 2ND ADDITION PROJECT NO. 468-84551 O.C.A. NO. 744295

GENERAL NOTES

1. Contractor will be required to provide a minimum advance notice of seventy-two (72) hours to utility companies prior to starting any excavation as follows:

Kansas One-Call 687-2470

The Contractor must notify the following in case of an emergency:

Cox Communications 260-7204
 Kansas Gas Service 888-482-4950
 Westar 383-8600
 AT&T 1-800-286-8313
 City of Wichita Water Department 262-6000
 City of Wichita Sewer Maintenance 262-6000

2. Underground utility service lines and overhead utility pole lines are to be adjusted as necessary by others prior to construction unless the plans specifically call for their adjustment by the Contractor or unless the plans specifically identify a utility to be adjusted by its owner during construction. Existing utilities and their location, as shown on the plans, represent the best information obtainable for design. Location information has been obtained from the various utility companies and is either from company record drawings or company-provided field locations. The Contractor will be required to work around existing utilities within the right-of-way which do not conflict with proposed construction.

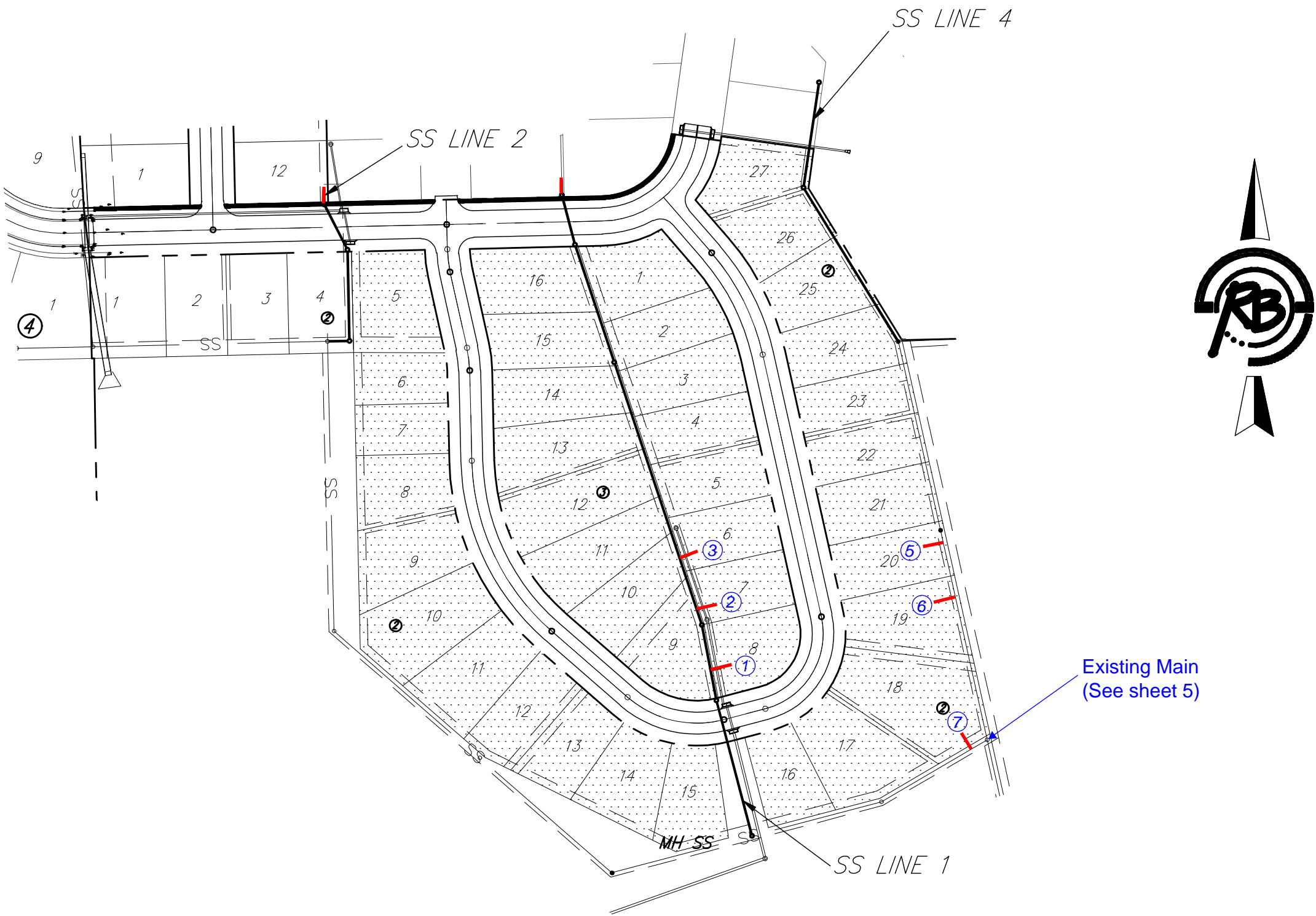
3. Rubble from the removal of miscellaneous structures and excess excavation which is to be wasted shall be disposed of on sites to be provided by the Contractor. These sites shall be approved by the Engineer as to suitability, appearance and site location. Locations that, in the opinion of the Engineer, will leave an unsightly appearance will not be approved.

4. All disposal sites must be approved by the Kansas Department of Health and Environment. Material either stockpiled or disposed of in a flood plain would require a Kansas State Board of Agriculture permit. Any material dumped in waters of the United States or wetlands is subject to U.S. Corps permitting regulations. Any material buried or stockpiled beyond approved of Engineers construction limits would require additional archeological investigations unless buried in a previously approved borrow location.

5. The Contractor shall give all property owners and/or tenants of developed property directly abutting the construction of this project a minimum of ten (10) days advance notice prior to start of construction.

6. The Contractor shall seed, fertilize and mulch all disturbed areas upon completion of construction. Incidental to the bid item for "Project Seeding".

7. This Sanitary Sewer project is tied to Storm Water Drain Project #351 (468-84552). All easement grading and provisions for BMP's are to be completed by Storm Water Drain #351. All easement grading shall be done to the satisfaction of the Storm Water Drain #351 plans upon completion of both this Sanitary Sewer Project (468-84551) and the Storm Water Drain Project (468-84552).



Existing Main
(See sheet 5)



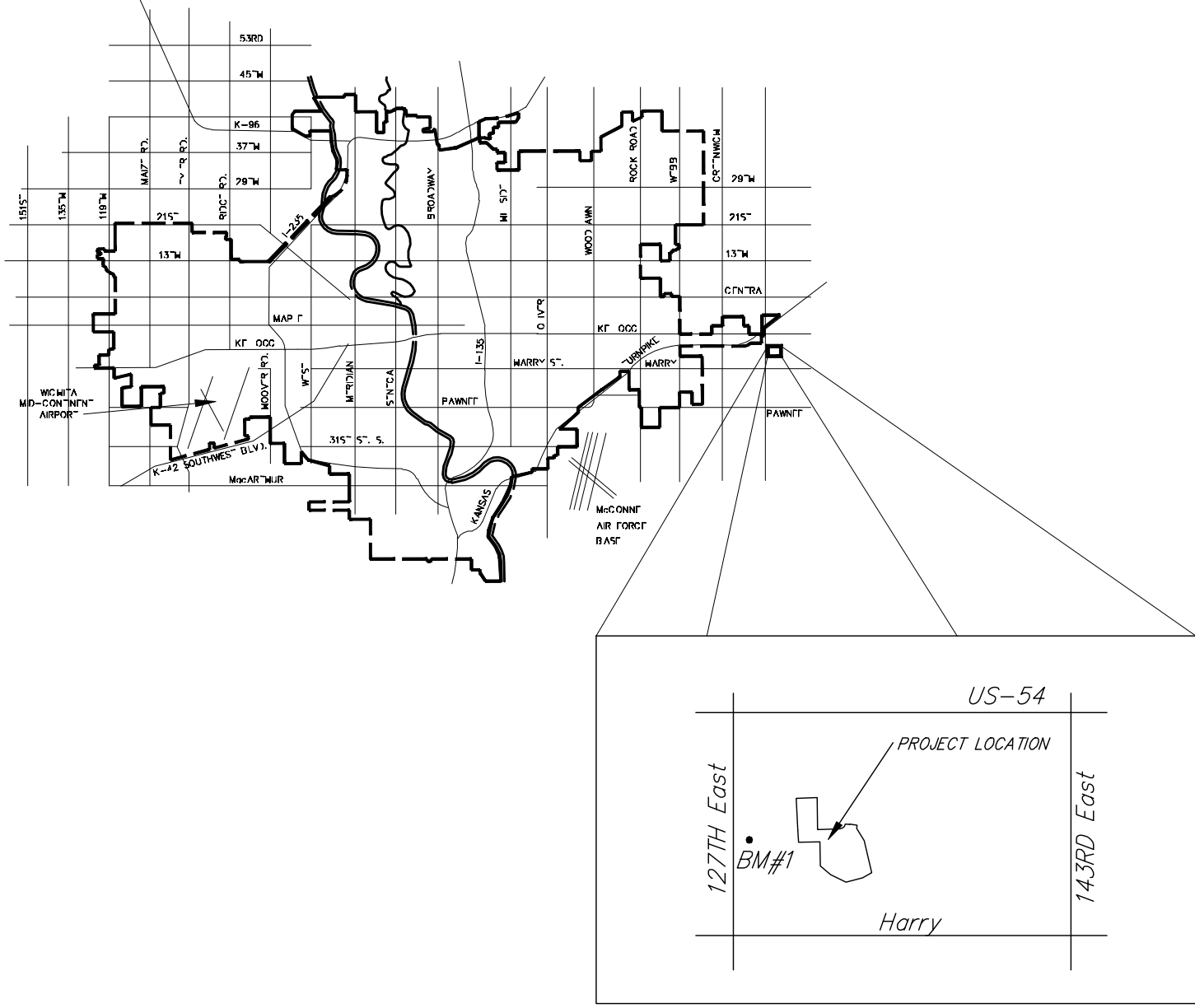
BENCH MARKS

BENCHMARK:
 RAILROAD SPIKE IN SOUTH FACE OF POWER
 POLE 79' SOUTH SOUTHEAST OF THE WEST
 QUARTER CORNER OF SEC. 26, T27S, R2E.
 ELEVATION = 1337.46 (NGVD)

SHEET INDEX

- | | |
|----|-------------------------|
| 1. | TITLE |
| 2. | LINE 1 |
| 3. | LINE 2 |
| 4. | LINE 4 |
| 5. | EXISTING SS ADJUSTMENTS |
| 6. | TYPE P MH |
| 7. | MH RING & COVER |
| 8. | SERVICE RISER DETAIL |
| 9. | FINAL PLAT |

McCullough Excavation - Contractor
 G. Glaser - City of Wichita, Field Project Engineer
 M. Kavan - City of Wichita, Inspector
 As-built
 Stubs and Risers
 Release Date: 09/10/2010
 pdf: APRosas 09/15/2010



VICINITY MAP

IMPROVEMENT DISTRICT

CITY OF WICHITA, KANSAS
 JAMES ARMOUR, P.E. - CITY ENGINEER

Ruggles & Bohm, P.A.
 Engineering, Surveying, Land Planning
 624 North Main
 Wichita, Kansas 67203
 www.rbkansas.com
 (316) 264-0006
 (316) 264-4621 fax
 E-mail: info@rbkansas.com