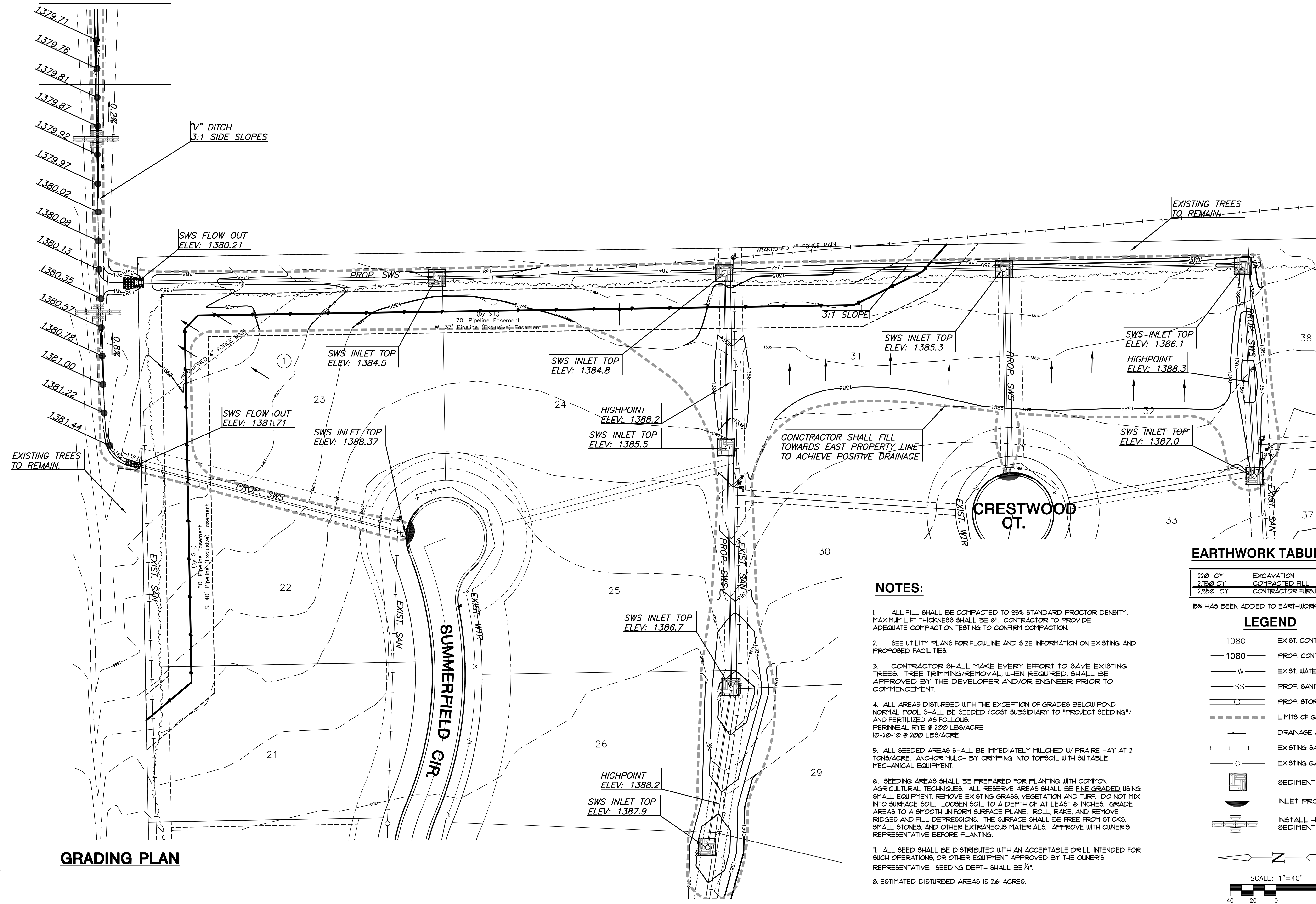


**STORM WATER SEWER PLANS FOR
WATERFRONT RESIDENTIAL
PHASE 2**



GRADING PLAN

NOTES:

- ALL FILL SHALL BE COMPACTED TO 95% STANDARD PROCTOR DENSITY. MAXIMUM LIFT THICKNESS SHALL BE 8". CONTRACTOR TO PROVIDE ADEQUATE COMPACTION TESTING TO CONFIRM COMPACTION.
- SEE UTILITY PLANS FOR FLOUPLINE AND SIZE INFORMATION ON EXISTING AND PROPOSED FACILITIES.
- CONTRACTOR SHALL MAKE EVERY EFFORT TO SAVE EXISTING TREES. TREE TRIMMING/REMOVAL, WHEN REQUIRED, SHALL BE APPROVED BY THE DEVELOPER AND/OR ENGINEER PRIOR TO COMMENCEMENT.
- ALL AREAS DISTURBED WITH THE EXCEPTION OF GRADES BELOW POND NORMAL POOL SHALL BE SEEDED (COST SUBSIDIARY TO "PROJECT SEEDING") AND FERTILIZED AS FOLLOWS:
PERMANENT RYE @ 200 LBS/ACRE
10-20-10 @ 200 LBS/ACRE
- ALL SEEDED AREAS SHALL BE IMMEDIATELY MULCHED W/ PRAIRIE HAY AT 2 TONS/ACRE. ANCHOR MULCH BY CRIMPING INTO TOPSOIL WITH SUITABLE MECHANICAL EQUIPMENT.
- SEEDING AREAS SHALL BE PREPARED FOR PLANTING WITH COMMON AGRICULTURAL TECHNIQUES. ALL RESERVE AREAS SHALL BE FINE GRADED USING SMALL EQUIPMENT. REMOVE EXISTING GRASS, VEGETATION AND TURF. DO NOT MIX INTO SURFACE SOIL. LOOSEN SOIL TO A DEPTH OF AT LEAST 6 INCHES. GRADE AREAS TO A SMOOTH UNIFORM SURFACE PLANE. ROLL, RAKE, AND REMOVE RIDGES AND FILL DEPRESSIONS. THE SURFACE SHALL BE FREE FROM STICKS, SMALL STONES, AND OTHER EXTRANEOUS MATERIALS. APPROVE WITH OWNER'S REPRESENTATIVE BEFORE PLANTING.
- ALL SEED SHALL BE DISTRIBUTED WITH AN ACCEPTABLE DRILL INTENDED FOR SUCH OPERATIONS, OR OTHER EQUIPMENT APPROVED BY THE OWNER'S REPRESENTATIVE. SEEDING DEPTH SHALL BE 1/4".
- ESTIMATED DISTURBED AREAS IS 2.6 ACRES.

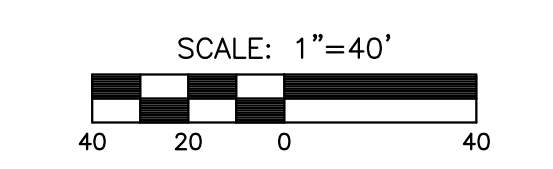
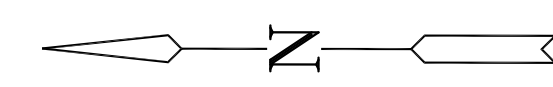
EARTHWORK TABULATIONS

220 CY	EXCAVATION
2150 CY	COMPACTED FILL
1350 CY	CONTRACTOR FURNISH

15% HAS BEEN ADDED TO EARTHWORK NUMBERS.

LEGEND

- 1080 --- EXIST. CONTOUR
- 1080 — PROP. CONTOUR
- W — EXIST. WATERLINE
- SS — PROP. SANITARY SEWER
- SWS — PROP. STORMWATER SEWER
- --- LIMITS OF GRADING
- DRAINAGE ARROWS
- | — EXISTING SANITARY SEWER
- G — EXISTING GAS LINE
- [] SEDIMENT BARRIER
- [] INLET PROTECTION
- [] INSTALL HAY BALE SEDIMENT BARRIERS



GRADING & EROSION CONTROL PLAN

SHEET TITLE
06266

PROJECT NUMBER

DESIGN BY
DFL

DRAWN BY
MLP

CHECKED BY
GJA

ISSUED

August 2010

REVISED

SHEET NO.

10 of 17