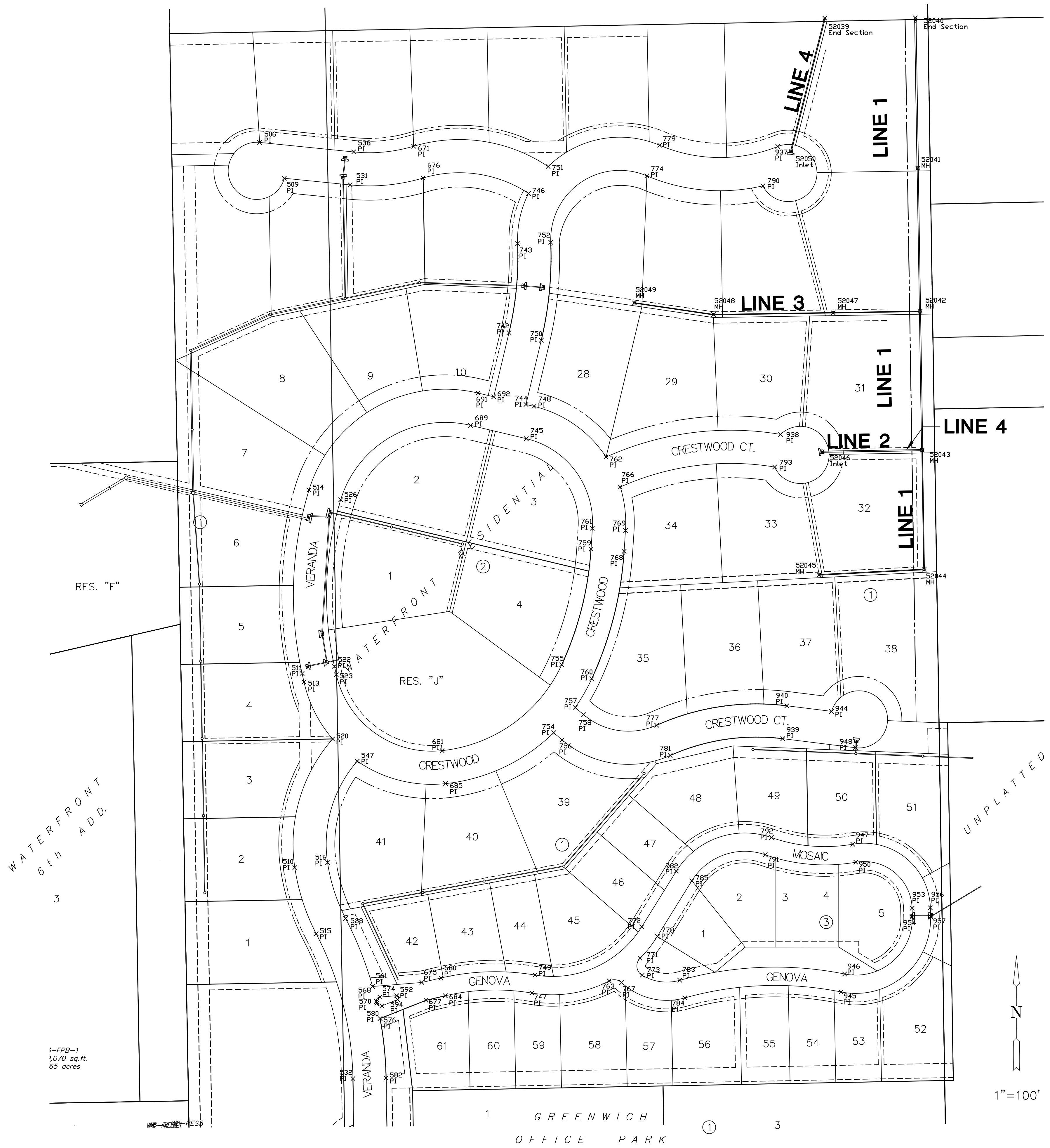


STORM WATER SEWER PLANS FOR
WATERFRONT RESIDENTIAL
PHASE 2

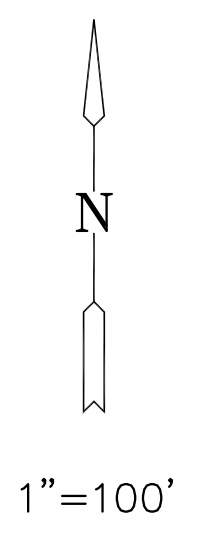


PLAT IRONS			
Point #	Northing	Easting	Desc.
506	1696799.71	1683761.79	PI
509	1696737.03	1683805.04	PI
510	1695531.51	1683823.34	PI
511	1695870.91	1683836.09	PI
513	1695855.97	1683839.44	PI
514	1696191.64	1683848.13	PI
515	1695415.64	1683860.87	PI
516	1695540.03	1683880.71	PI
518	1694764.12	1683886.09	PI
519	1694704.13	1683887.15	PI
520	1695756.44	1683889.52	PI
522	1695883.59	1683892.68	PI
523	1695868.65	1683896.03	PI
524	1694704.34	1683899.15	PI
526	1696174.75	1683903.62	PI
528	1695442.37	1683912.34	PI
530	1694764.60	1683913.09	PI
531	1696725.34	1683920.42	PI
532	1695162.50	1683925.07	PI
533	1694530.04	1683925.23	PI
534	1694530.04	1683925.23	PI
535	1694964.39	1683925.67	PI
536	1694494.06	1683925.86	PI
537	1694849.77	1683926.09	PI
538	1696783.05	1683926.26	PI
539	1695055.97	1683926.95	PI
540	1694779.35	1683927.33	PI
541	1694566.99	1683927.91	PI
542	1694675.37	1683929.16	PI
544	1694601.96	1683930.46	PI
546	1694896.68	1683932.49	PI
547	1695717.68	1683932.67	PI
548	1694940.58	1683938.49	PI
549	1694850.19	1683950.08	PI
550	1694804.05	1683950.90	PI
551	1694666.52	1683953.32	PI
553	1694787.21	1683954.94	PI
554	1694520.05	1683955.91	PI
556	1694683.49	1683956.77	PI
557	1694894.33	1683956.92	PI
558	1694782.69	1683957.15	PI
560	1694688.08	1683958.82	PI
561	1695323.54	1683959.43	PI
562	1694894.40	1683960.69	PI
565	1694782.82	1683964.40	PI
567	1694688.21	1683966.07	PI
568	1695297.05	1683966.31	PI
569	1694787.42	1683966.44	PI
570	1695294.28	1683966.95	PI
571	1694683.69	1683968.27	PI
572	1694850.53	1683969.08	PI
573	1694804.38	1683969.89	PI
574	1695305.01	1683972.11	PI
575	1694666.85	1683972.32	PI
576	1695267.49	1683972.54	PI
579	1694520.38	1683974.90	PI
580	1695289.72	1683975.68	PI
581	1694941.26	1683977.48	PI
582	1695163.52	1683983.06	PI
583	1695056.99	1683984.94	PI
584	1694897.61	1683985.02	PI
585	1694965.51	1683989.45	PI
587	1694850.95	1683993.07	PI
589	1694780.53	1683994.32	PI
590	1694676.55	1683996.15	PI
591	1694495.48	1683999.35	PI
592	1695307.42	1684001.70	PI
594	1695300.68	1684003.28	PI
667	1694766.29	1684009.07	PI
668	1694706.57	1684025.13	PI
671	1696793.03	1684031.24	PI
672	1694766.77	1684036.07	PI
673	1694706.78	1684037.13	PI
675	1695330.57	1684045.61	PI
676	1696737.47	1684047.86	PI
677	1695299.41	1684052.90	PI
680	1695338.48	1684079.43	PI
681	1695736.01	1684081.04	PI
684	1695307.32	1684086.71	PI
685	1695678.34	1684087.19	PI
689	1696304.93	1684130.60	PI
691	1696361.35	1684144.04	PI
692	1696354.83	1684171.39	PI
742	1696467.07	1684198.13	PI
743	1696622.58	1684213.20	PI
744	1696341.39	1684227.81	PI
745	1696281.65	1684228.30	PI
746	1696710.60	1684232.30	PI
747	1695312.05	1684238.08	PI
748	1696338.07	1684241.74	PI
749	1695343.60	1684243.41	PI
750	1696453.63	1684254.55	PI
751	1696757.48	1684266.55	PI
752	1696624.93	1684271.15	PI
754	1695767.34	1684276.24	PI

PLAT IRONS			
Point #	Northing	Easting	Desc.
755	1695886.29	1684290.38	PI
756	1695754.77	1684290.98	PI
757	1695811.47	1684313.88	PI
758	1695798.90	1684328.62	PI
759	1696088.25	1684341.61	PI
760	1695862.01	1684343.05	PI
761	1696124.96	1684343.99	PI
762	1696249.49	1684368.00	PI
763	1695333.29	1684373.48	PI
766	1696197.06	1684392.81	PI
767	1695330.33	1684395.17	PI
768	1696084.49	1684399.48	PI
769	1696121.20	1684401.87	PI
771	1695372.86	1684427.33	PI
772	1695427.92	1684430.32	PI
773	1695343.17	1684431.04	PI
774	1696741.26	1684439.25	PI
777	1695780.47	1684456.45	PI
778	1695411.03	1684457.50	PI
779	1696794.66	1684461.88	PI
781	1695727.51	1684480.09	PI
782	1695525.38	1684490.88	PI
783	1695334.37	1684496.99	PI
784	1695303.57	1684505.66	PI
785	1695508.50	1684518.06	PI
790	1696723.77	1684642.23	PI
791	1695553.87	1684646.59	PI
792	1695584.08	1684657.14	PI
793	1696232.03	1684662.78	PI
937	1696792.61	1684668.33	PI
938	1696289.08	1684673.32	PI
939	1695756.90	1684677.03	PI
940	1695814.45	1684684.18	PI
944	1695804.74	1684762.43	PI
945	1695314.00	1684778.96	PI
946	1695345.38	1684785.26	PI
947	1695572.39	1684799.47	PI
948	1695741.10	1684804.26	PI
950	1695540.87	1684804.95	PI
953	1695460.29	1684903.32	PI
954	1695445.01	1684903.72	PI
956	1695461.12	1684935.31	PI
957	1695445.83	1684935.71	PI

SWS POINTS			
Number	Northing	Easting	Desc.
52039	1697016.92	1684750.68	End Section
52040	1697017.44	1684909.02	End Section
52041	1696754.78	1684913.18	MH
52042	1696504.21	1684917.15	MH
52043	1696261.53	1684920.99	MH
52044	1696052.87	1684924.29	MH
52045	1695825.66	1684573.27	MH
52046	1696258.75	1684745.84	Inlet
52047	1696501.80	1684765.23	MH
52048	1696498.49	1684556.00	MH
52049	1696518.99	1684417.58	MH
52050	1696784.04	1684691.39	Inlet

1-FPB-1
1,070 sq. ft.
65 acres



BUBBLE MAP
SHEET TITLE
PROJECT NUMBER
06266

DESIGN BY
SRS
DRAWN BY
JWC
CHECKED BY
GJA

ISSUED
August 2010
REVISED

SHEET NO.
11 of 17

PLOTTED: Tuesday, August 24, 2010 @ 09:52AM

J:\CIVIL\06266\DWG\SWS\RESIDENTIAL\PHASE 2\06266_BUBBLE_P12.DWG