

GENERAL NOTES:

1. Contractor will be required to provide notice to utility companies a minimum of twenty-four (24) hours prior to any excavation, as follows:

Kansas One-Call (316)687-2470

The Contractor must notify the following in case of an emergency:

Cox Communications (316)262-4270 or (316)263-2061

Westar Energy/
 Kansas Gas & Electric Company (800)482-4950
 AT&T 1-555-1212
 City of Wichita Water Department (316)268-4908
 City of Wichita Sewer Department (316)268-4071
 Aquila Natural Gas (316)941-1608 or (800)303-0357

2. Exist. utilities and their locations, as shown on the plans, represent the best information attainable for design. Location information has been obtained from the various utility companies and is either from company record drawings or company-provided field locations. The Contractor will be required to work around existing utilities which do not conflict with proposed constructions.

3. The Contractor to verify utility locations prior to construction of this project.

4. Utility service and installation shall be coordinated with the respective utility owner. Contacts are:

Kansas Gas Service Jim Coe (316)832-3126
 Westar Energy Miles Capps (316)261-6251
 Aquila Networks Calvin Briggs (316)942-8811
 Wichita Water & Sewer Kerry Gibson (316)268-4555
 AT&T Jim Toben (316)268-2759
 Cox Communications Mark Anaya (316)262-4270

5. All lawn/turf areas disturbed by construction of proposed improvements shall be restored with the same grass as existing. Restoration of disturbed areas shall include, but not limited to, to soil preparation, fertilizing, seeding, mulching (all seeded areas, outside the limits of erosion mat placement), and/or reseeding, and installation of erosion control mat. All seeding work shall be in accordance with the City of Wichita Standard Specifications and the City of Wichita Administrative Regulations No. AR 6.5 which governs cleanup and respiration or replacement following construction. All cost for the soil preparation, seeding and mulching (all seeded areas, outside the limits of erosion mat placement) shall be paid for through the lump sum bid item for "Seeding." All seeded areas within eight feet of the back of new curb shall be covered with an approved erosion mat, which shall be paid for by the measured quantity bed item "Back of Curb Protection (8' wide)."

6. Traffic affected by the construction of this project shall be handled in accordance with the latest edition of the Manual on Uniform Traffic Control Devices.

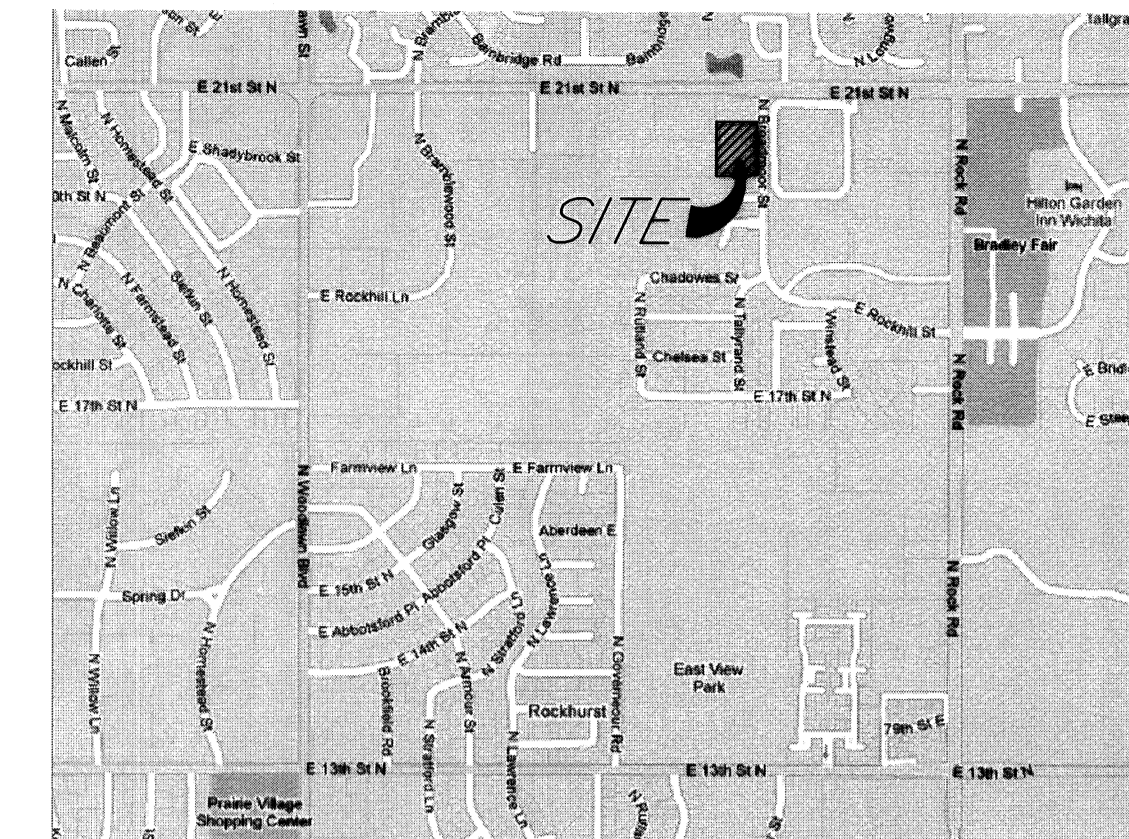
7. It is the contractor's responsibility to visit this site to better understand the extent of site clearing and restoration to be performed. Site Clearing and Restoration shall include all costs for removal of items which a pay item is not provided.

8. The contractor shall be responsible for preserving property irons. The contractor will be required to re-establish any property irons which are damaged or destroyed by the construction operations. Such irons shall be re-established by a licensed land surveyor in accordance with state laws.

9. Properties within the project limits may have underground sprinkler systems in public right-of-way which conflict with new construction. Contractor will be required to remove such improvements should they not be removed by their owner at the time of construction of the project. The contractor will be required to salvage all sprinkler heads and/or valves and give such material to owner. Portions of underground sprinkler systems not in conflict with new construction shall be protected from damage and shall remain in place. All work in connection with underground sprinkler systems shall be considered as subsidiary to the contract pay items for work.

10. Cuts made in paved surfaces on public property will be repaired by the City's Contractor and charged against the contractor. Unit Repair prices are available from the city at 268-4418. A surcharge may be applicable. Call 268-4418 for details. Repair costs to be paid prior to release of utility service if utilities are effected.

WATER LINE TO SERVE BROADMOOR SENIOR HOUSING 1511 PPW (607853) CITY OF WICHITA, KANSAS Jim Armour, P.E., City Engineer



LOCATION MAP
 (For Visual Use Only)

INDEX OF SHEETS:

- C5.1 - Cover
- C5.2 - Plan & Profile (line 1)
- C4.3 - Water Details

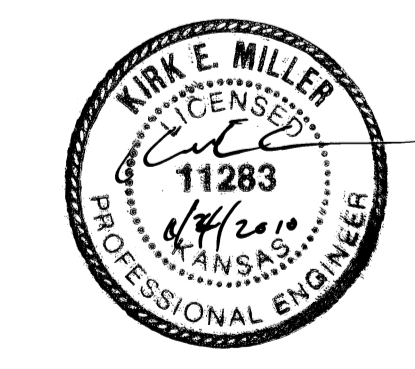
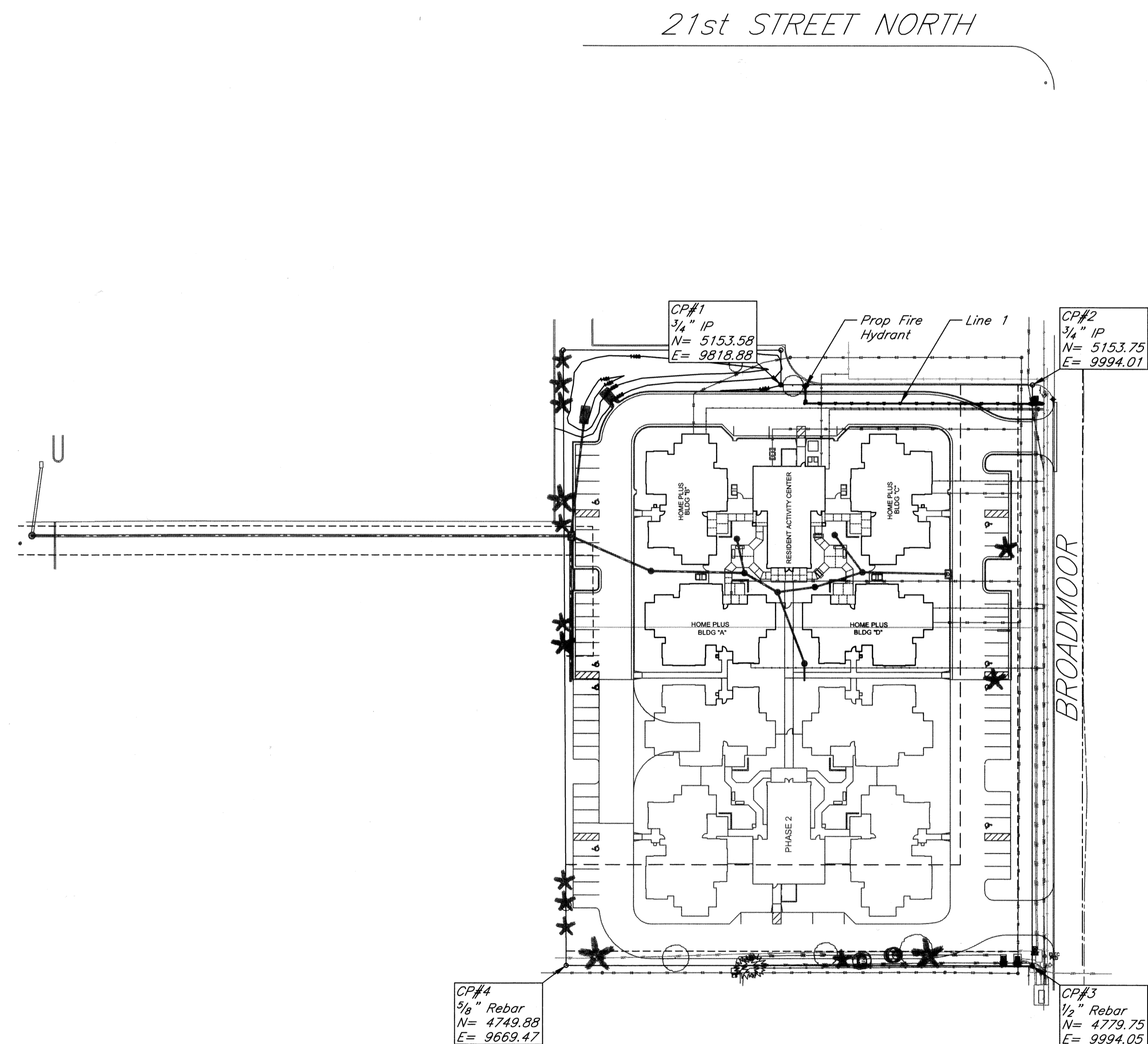
Legal Description:

Part of Lots 4 and 5, Broadmoor Addition,
 Wichita, Sedgwick County, Kansas

Benchmark:

City of Wichita Disc on the Northeast Corner of a concrete railroad signal base on the West side of Rock Road, North side of old train tracks
 Elev. = 1390.59

"□" cut top of curb on the South end of the return on the South side of the La Petite Academy.
 Elev. = 1404.68



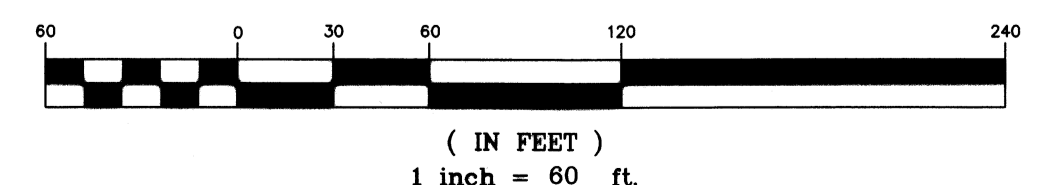
APPROVED AS NOTED
 BY CITY ENGINEER OF WICHITA,
 BY WICHITA WATER & SEWER DEPARTMENT,
 & BY WICHITA FIRE DEPARTMENT

Public Works: *[Signature]* 1/16/10
 Water & Sewer: *[Signature]* 1/16/10
 Fire: *[Signature]* 1-6-2010

NOTE TO CONTRACTORS

Public Property:
 Inspection and testing for the waterline is to be provided by a Licensed Consulting Engineering Firm under contract with the Owner/Developer. Said inspection to be in accordance with the City of Wichita standard construction engineering practices and certified by a Professional Engineer Licensed in the state of Kansas. No work shall be performed in dedicated easements or public right-of-way by the Contractor without such inspection nor shall any work be commenced without written authorization by the City Engineer. All Construction and Materials shall comply with the City or Wichita Specifications and Standards (on file and available in the City Engineer's Office).

Private Property:
 Installation and testing for the fire protection line is to be performed by a City of Wichita licensed fire protection contractor in accordance with the fire codes as adopted by the City of Wichita. All material and construction practices for the fire protection line shall comply with the fire codes as adopted by the City of Wichita (available from the City of Wichita Fire Department). The Contractor shall not commence work without notification and approval of the Wichita Fire Department. Inspection of the fire protection line is to be provided by a Licensed Engineering Firm under contract with the Owner/Developer and the Fire Department. The contractor shall not start work until the project inspector is assigned to the project and present on the site. Any work done without inspection will be required to be uncovered for inspection.



January 2010

As Built Plans:
 CONTRACTOR: Mies Const.
 INSPECTOR: Tom Jones,
 COMPANY: K E Miller Engineering
 .PDF by: NWS, 09-23-2010

kemiller
engineering

516 S. Market,
 Wichita, KS 67202 (316)264-0242

DATE DRAWN
 01-04-2010
 REVISIONS

PRINTS ISSUED
 CITY PERMIT 12-08-09



1300 E. Lewis
 Wichita KS 67211
 316.267.8233
 316.267.8566 fax
 krehbielarchitect
 ure.com

DATE

BETHEL HOUSE
 RESIDENT ACTIVITY CENTER
 2121 N. BROADMOOR
 WICHITA, KANSAS

PROJECT NO.
 9048
 SHEET TITLE
 PPW Cover

SHEET NO.
C5.1