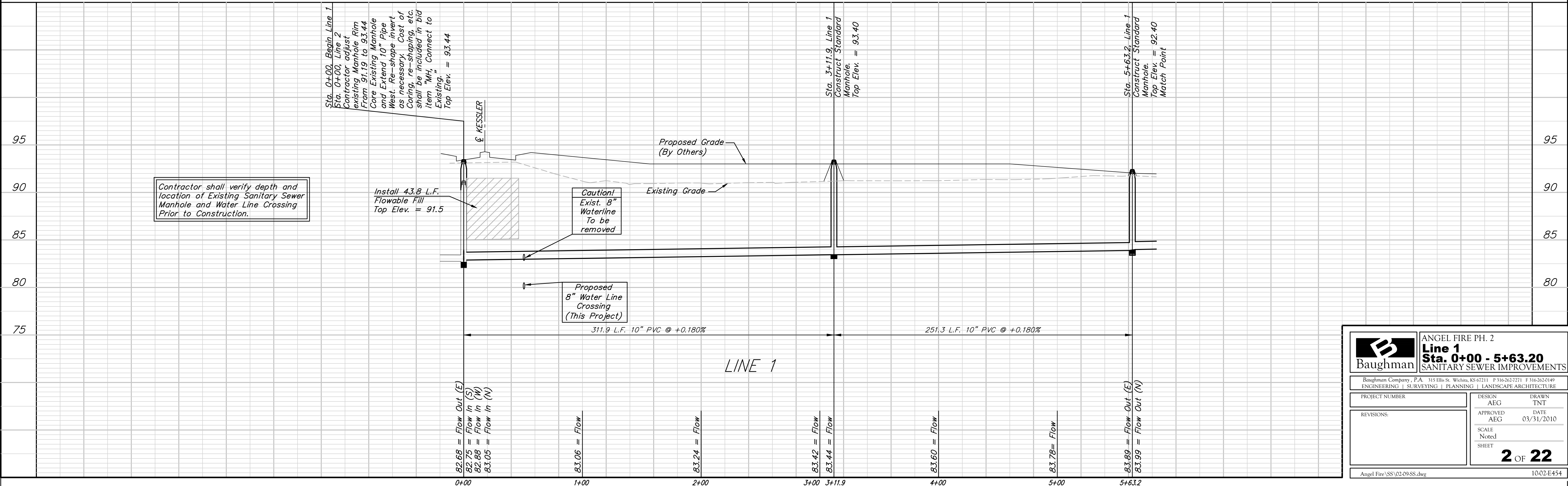
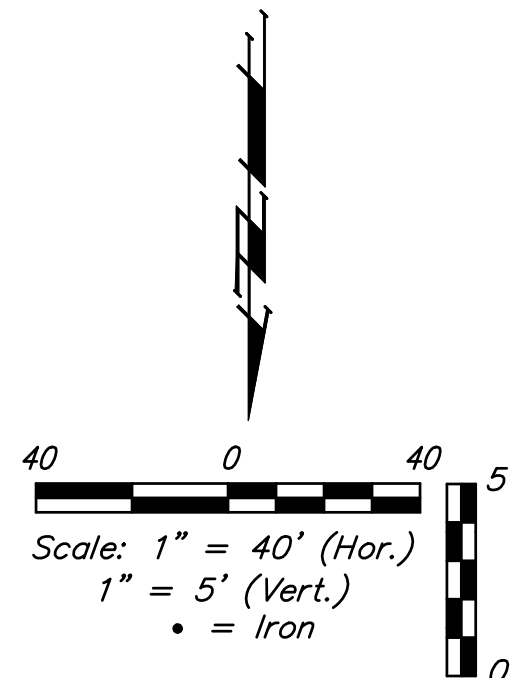
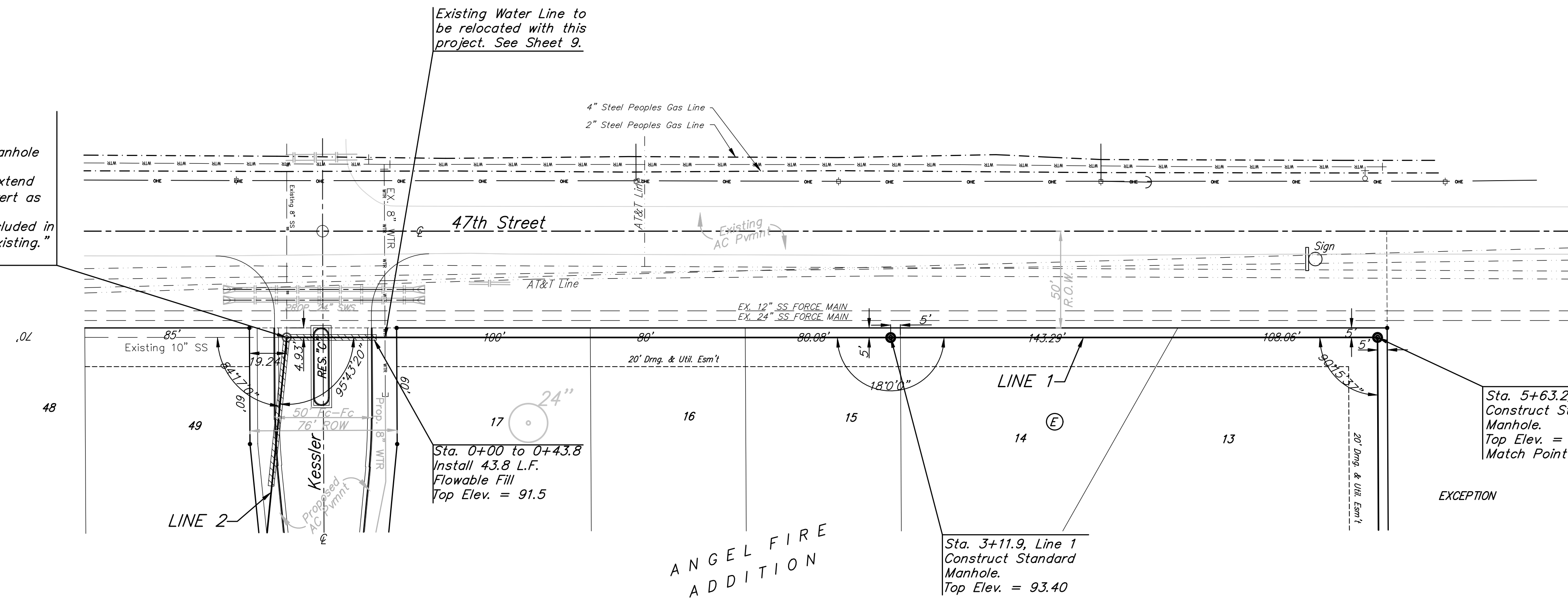


BENCHMARKS:
 C.O.W. Disc SE Corner West St. & 47th S.
 Elev. = 92.29 (City Datum)
 RR Spike in N. face of power pole, SE Corner 47th So. & Kessler
 Elev. = 91.74 (City Datum)
 "□" Cut in Top of Curb Adjacent to the NW Corner Lot 27, Block C.
 Elev. = 93.57 (City Datum)

Sta. 0+00, Begin Line 1
 Sta. 0+00, Line 2
 Contractor adjust existing Manhole Rim From 91.19 to 93.44
 Core Existing Manhole and Extend 10" Pipe West. Re-shape invert as necessary. Cost of Coring, re-shaping, etc. shall be included in bid item "MH, Connect to Existing."
 Top Elev. = 93.44



	ANGEL FIRE PH. 2 Line 1 Sta. 0+00 - 5+63.20 SANITARY SEWER IMPROVEMENTS	
	<small>Baughman Company, P.A. 315 Ellis St. Wichita, KS 67211 P 316-262-7271 F 316-262-0149 ENGINEERING SURVEYING PLANNING LANDSCAPE ARCHITECTURE</small>	
PROJECT NUMBER REVISIONS:	DESIGN AEG APPROVED AEG SCALE Note: 1 SHEET	DRAWN TNT DATE 03/31/2010
Angel Fire\SS\02-09-SS.dwg		10-02-E454