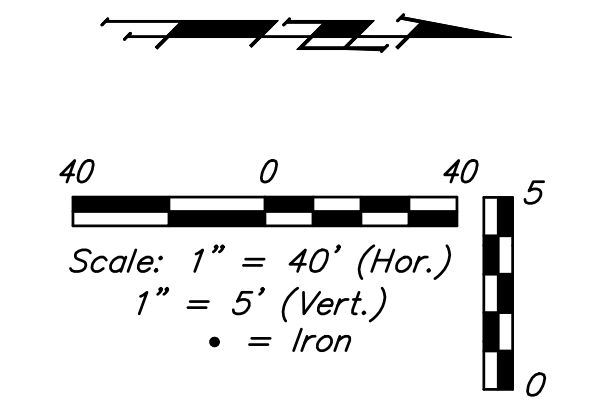
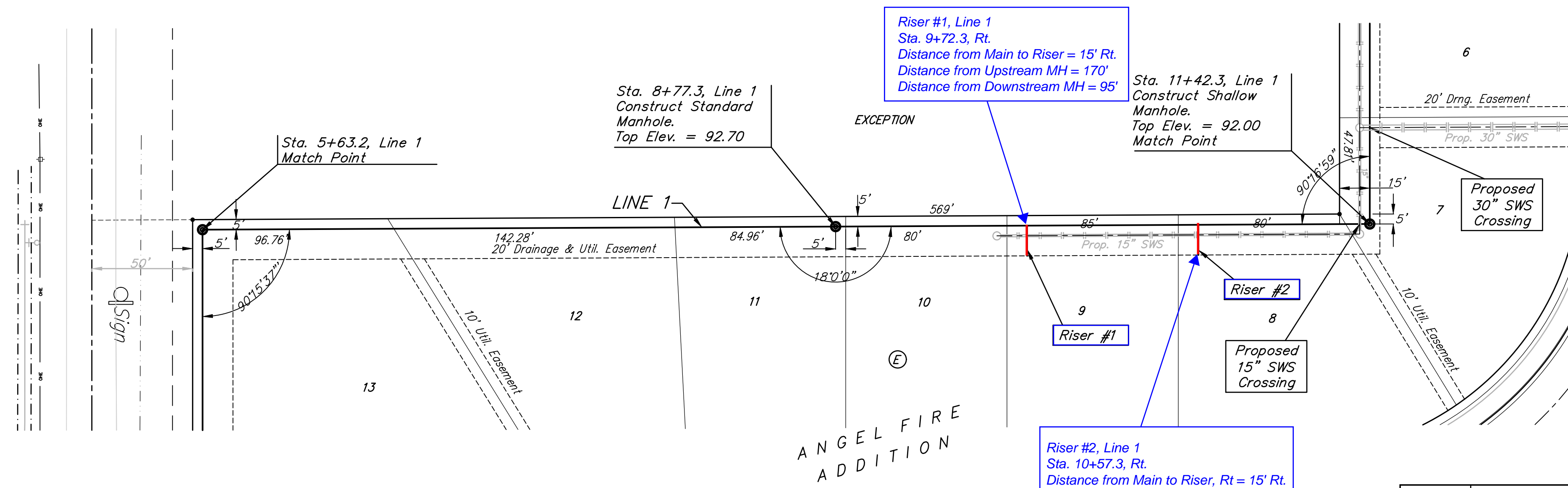


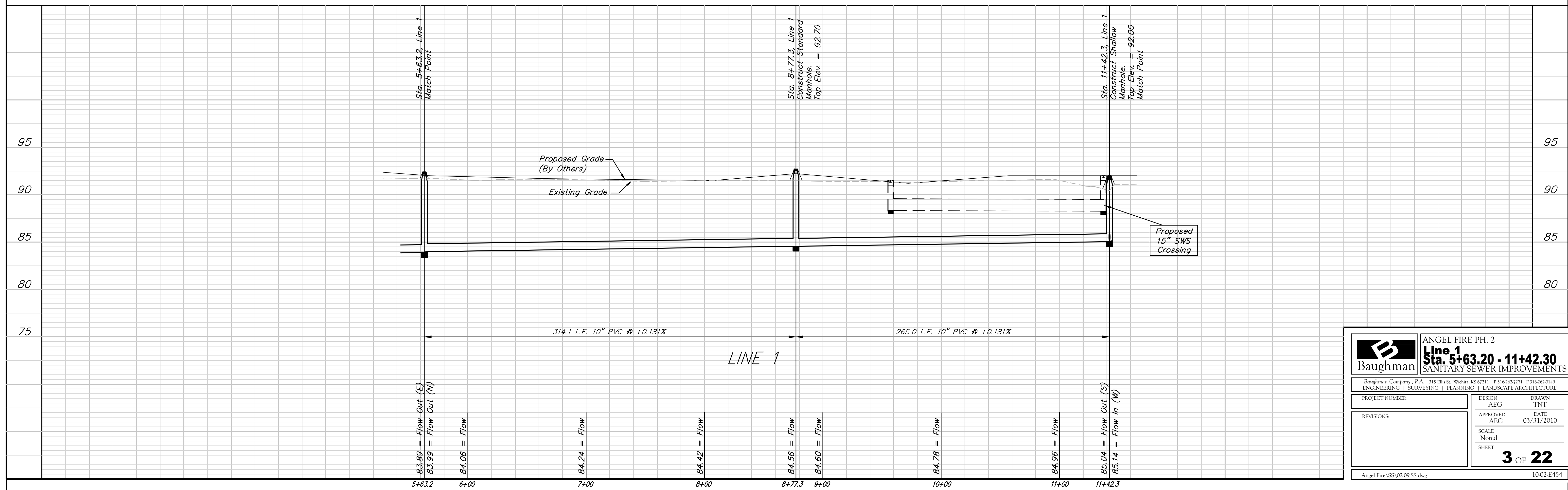
BENCHMARKS:
 C.O.W. Disc SE Corner West St. & 47th S.
 Elev. = 92.29 (City Datum)
 RR Spike in N. face of power pole, SE Corner 47th So. & Kessler
 Elev. = 91.74 (City Datum)
 "□" Cut in Top of Curb Adjacent to the NW Corner Lot 27, Block C.
 Elev. = 93.57 (City Datum)




SEWER SERVICE TABLE

NUMBER	TYPE	LOCATION			FOR INFORMATION ONLY	
		LOT NO.	BLOCK	LINE NO. \ STATION \ DIRECTION	APPROXIMATE LENGTH 4" PIPE	
					VERTICAL	HORIZONTAL
1	10"x4" Tee	9	E	1 9+72.3 \ Rt.	1.6'	15'
2	10"x4" Tee	8	E	1 10+57.3 \ Rt.	2.3'	15'

NOTE: Vertical Riser Pipe shall be extended to 2' minimum above ground water elevation and 4' maximum below proposed ground elevation. Contractor shall use Method "B" for riser construction. Pipe shall be laid at 2% slope. See detail, sheet 13.





Baughman
ENGINEERING | SURVEYING | PLANNING | LANDSCAPE ARCHITECTURE

ANGEL FIRE PH. 2
Line 1
Sta. 5+63.20 - 11+42.30
 SANITARY SEWER IMPROVEMENTS

PROJECT NUMBER		DESIGN	DRAWN
REVISIONS:		AEG	TNT
		APPROVED	DATE
		AEG	03/31/2010
		SCALE	Noted
		SHEET	
		3 OF 22	

Angel Fire/SS/02-09-SS.dwg
10-02-E454