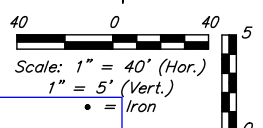
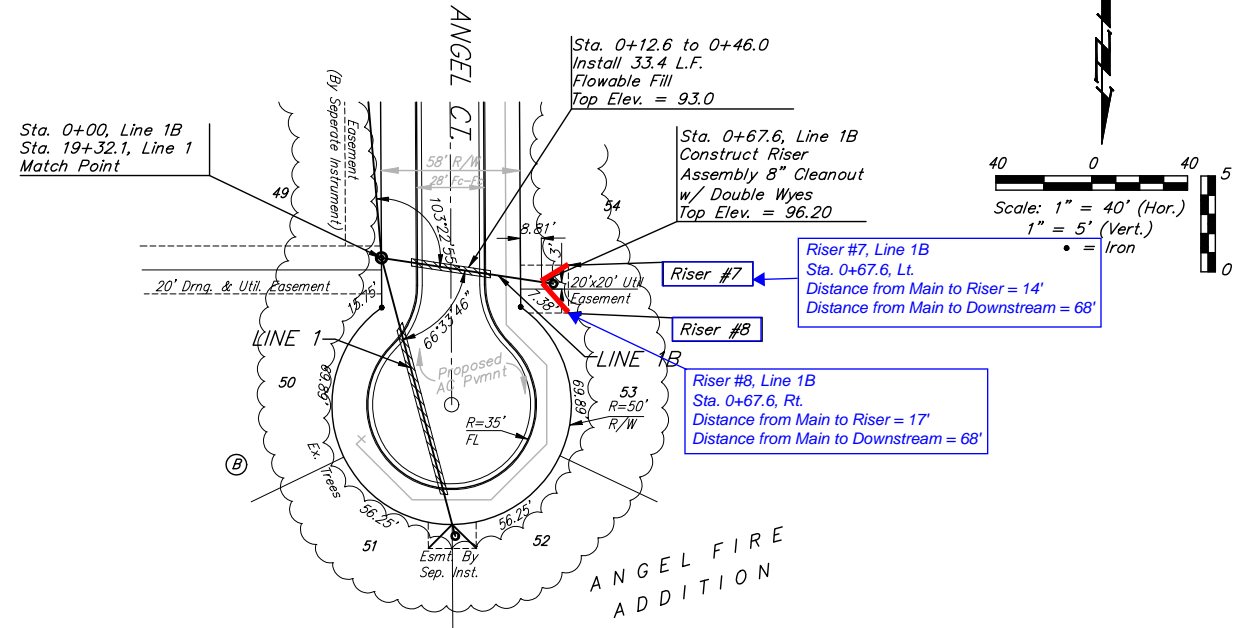
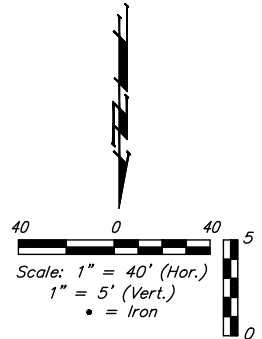
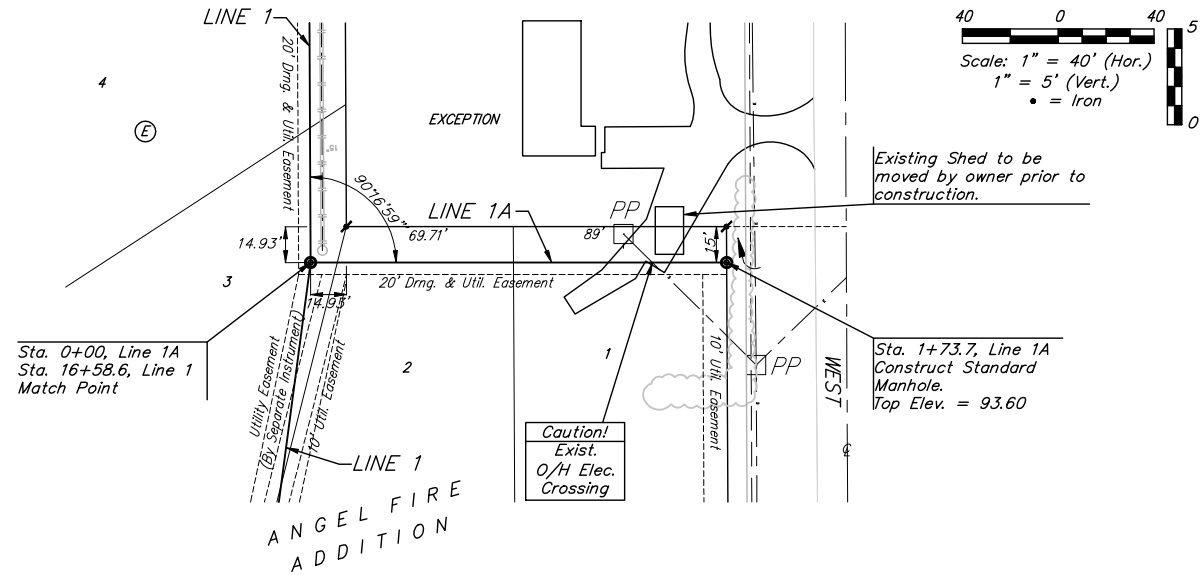


BENCHMARKS:
 C.O.W. Disc SE Corner West St. & 47th S.
 Elev. = 92.29 (City Datum)

RR Spike in N. face of power pole,
 SE Corner 47th So. & Kessler
 Elev. = 91.74 (City Datum)

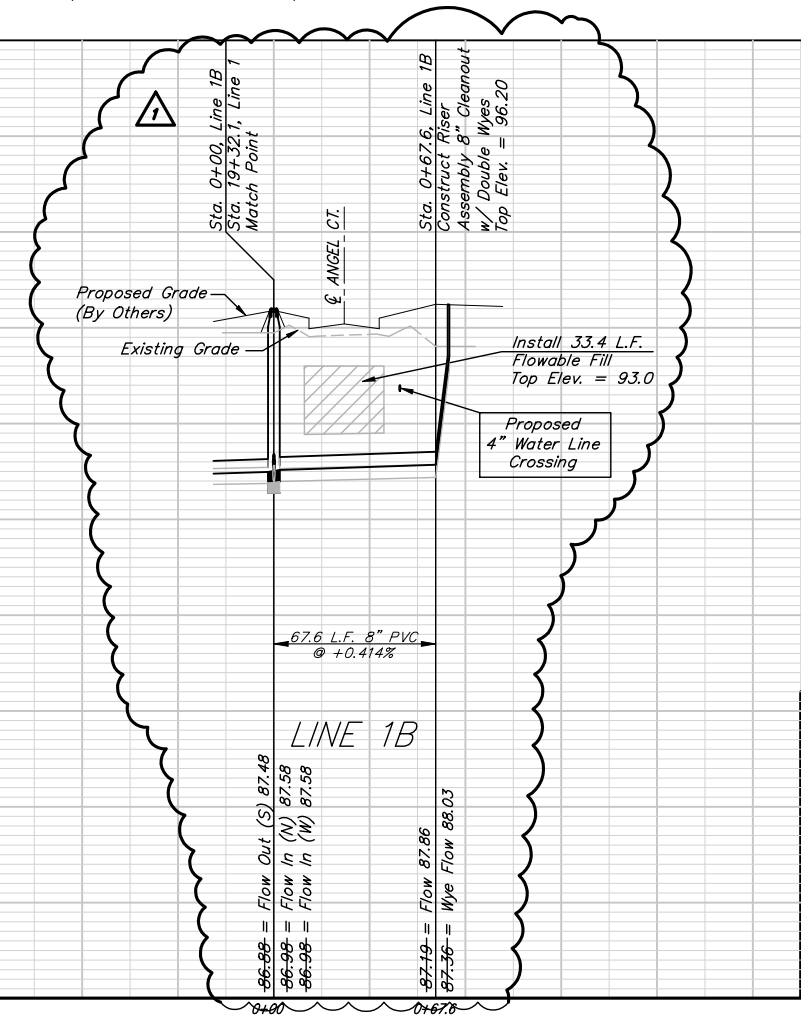
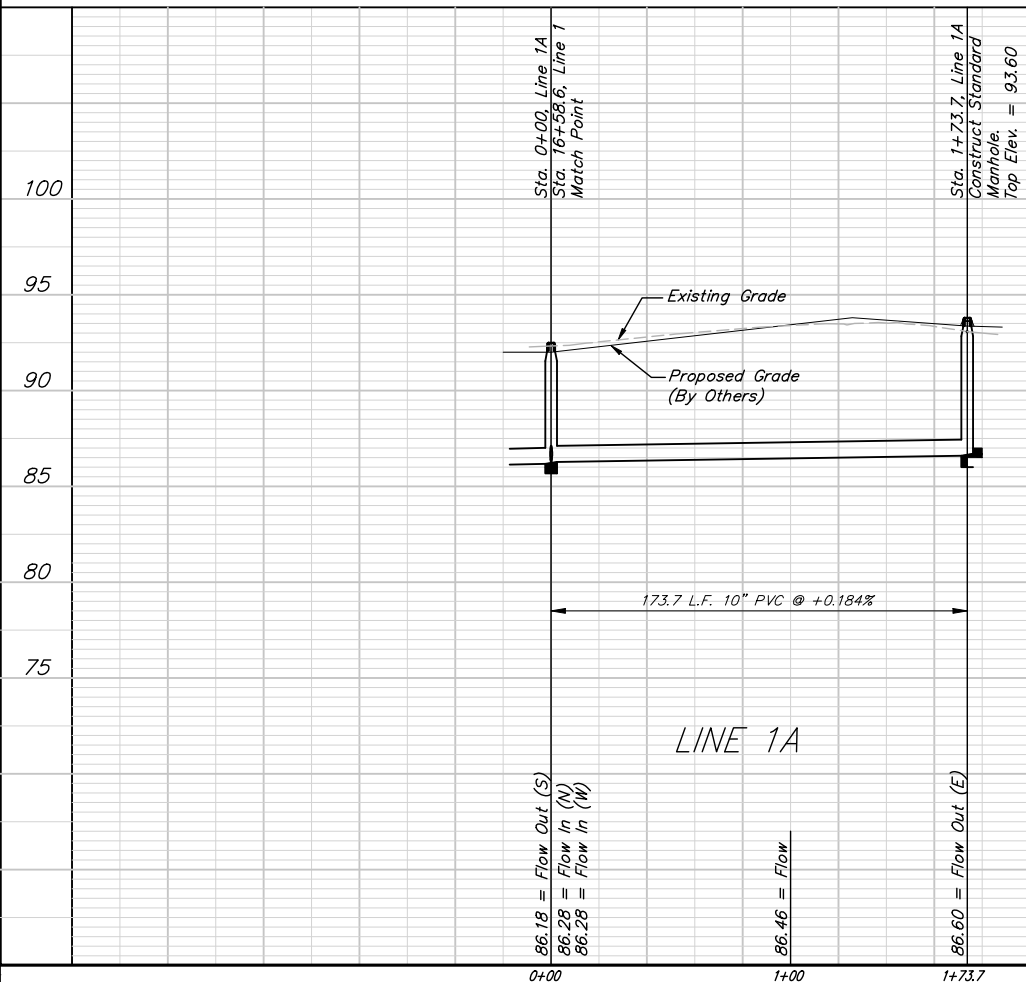
"□" Cut in Top of Curb Adjacent
 to the NW Corner Lot 27, Block C.
 Elev. = 93.57 (City Datum)



SEWER SERVICE TABLE

NUMBER	TYPE	LOCATION				FOR INFORMATION ONLY	
		LOT NO.	BLOCK NO.	LINE NO.	STATION \ DIRECTION	APPROXIMATE LENGTH 4" PIPE VERTICAL	HORIZONTAL
7	4" Dbl. Wye	54	B	1B	0+67.6 Lt.	4.1'	14'
8	4" Dbl. Wye	53	B	1B	0+67.6 Rt.	4.1'	17'

NOTE: Vertical Riser Pipe shall be extended to 2' minimum above ground water elevation and 4' maximum below proposed ground elevation. Contractor shall use Method "B" for riser construction. Pipe shall be laid at 2% slope. See detail, sheet 13.



Baughman ENGINEERING | SURVEYING | PLANNING | LANDSCAPE ARCHITECTURE

ANGELO FIRE PH. 2
Line 1A
Line 1B
 SANITARY SEWER IMPROVEMENTS

PROJECT NUMBER: _____ DESIGN: ABG DRAWN: TNT
 APPROVED: ABG DATE: 03/31/2010
 REVISIONS: 04/22/2010 TNT Updated Line 1B per Issue 1 drawings SCALE: Noted SHEET: **6 OF 22**

Angel Fire\SS\0209-SS.dwg 10-02-E454