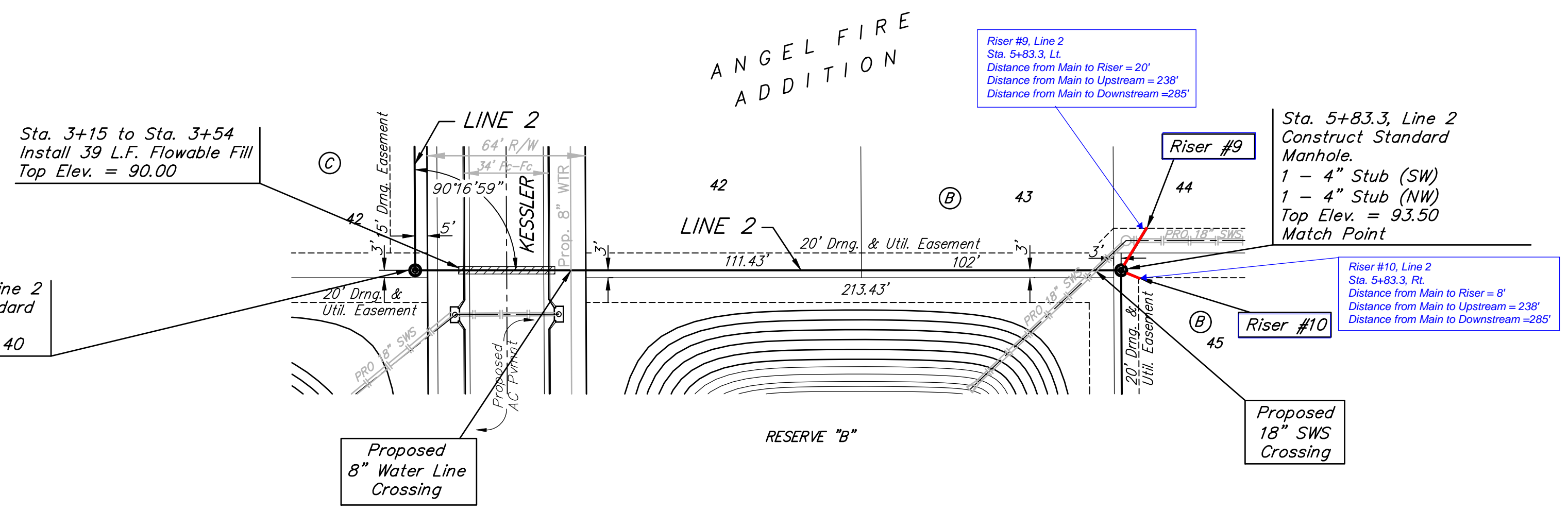
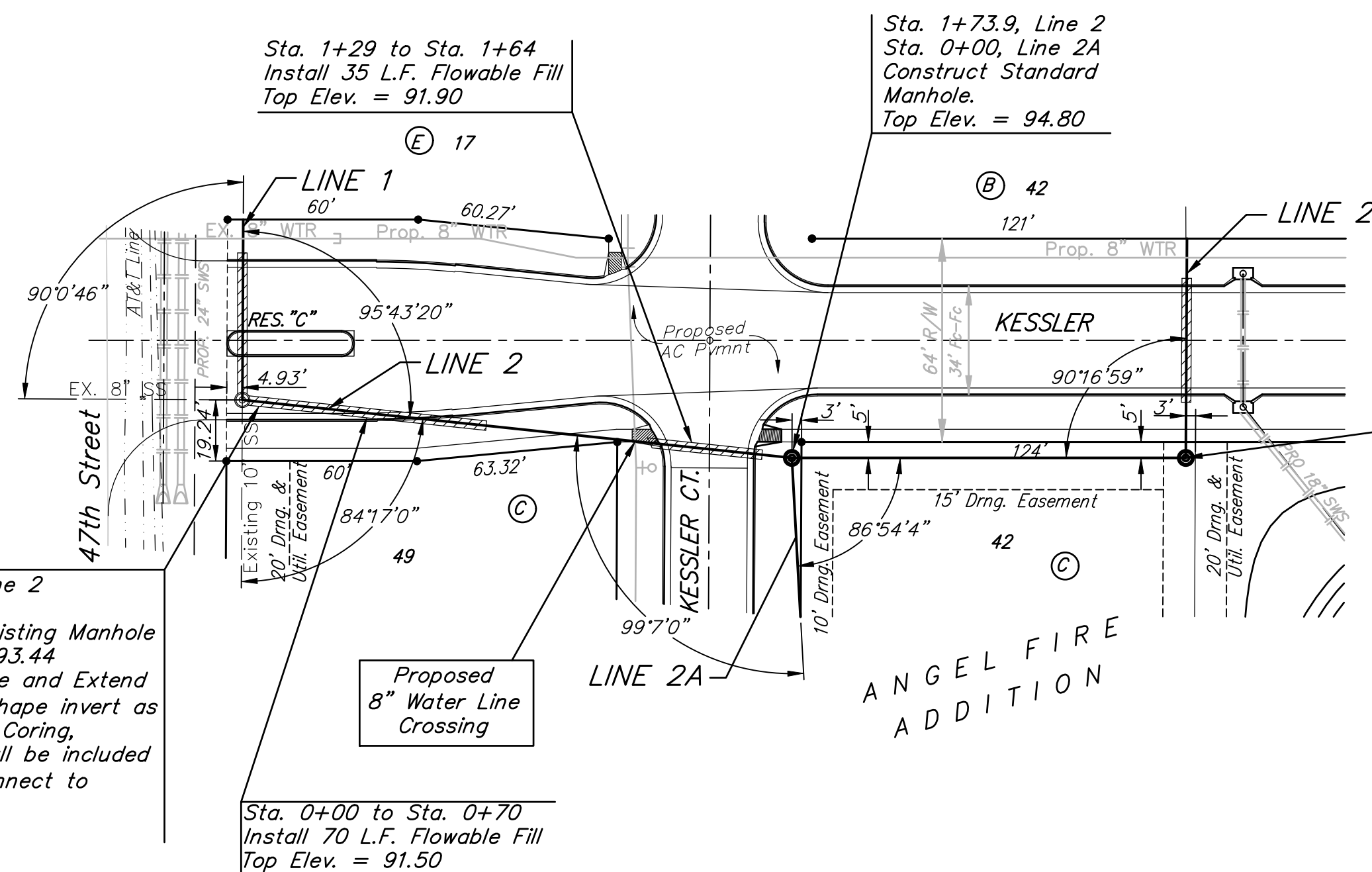
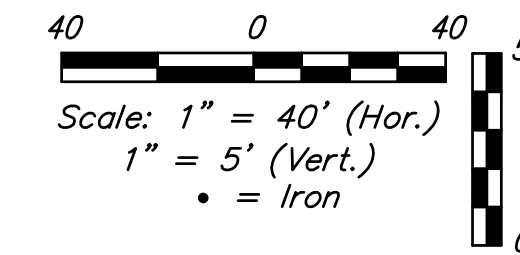
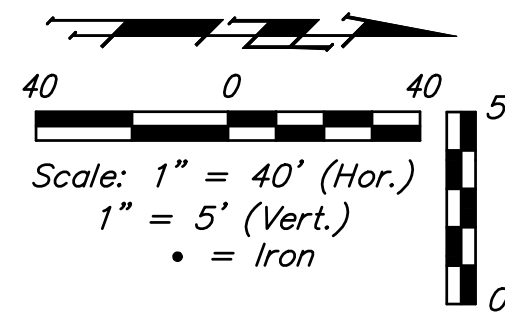


BENCHMARKS:
 C.O.W. Disc SE Corner West St. & 47th S.
 Elev. = 92.29 (City Datum)

RR Spike in N. face of power pole, SE Corner 47th So. & Kessler
 Elev. = 91.74 (City Datum)

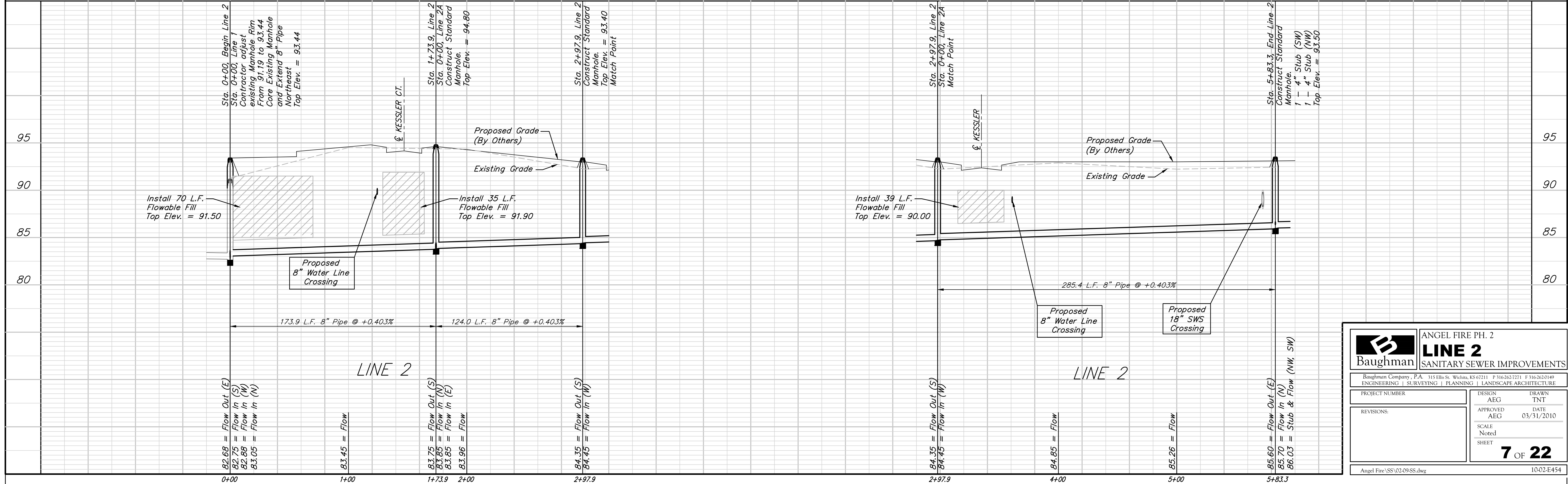
"□" Cut in Top of Curb Adjacent to the NW Corner Lot 27, Block C.
 Elev. = 93.57 (City Datum)



SEWER SERVICE TABLE

NUMBER	TYPE	LOCATION				FOR INFORMATION ONLY	
		LOT NO.	BLOCK	LINE NO.	STATION \ DIRECTION	APPROXIMATE LENGTH 4" PIPE	
9	4" Stub	44	B	2	5+83.3 \ Lt.	2.4'	20'
10	4" Stub	45	B	2	5+83.3 \ Rt.	2.4'	8'

NOTE: Vertical Riser Pipe shall be extended to 2' minimum above ground water elevation and 4' maximum below proposed ground elevation.
 Contractor shall use Method "B" for riser construction. Pipe shall be laid at 2% slope.
 See detail, sheet 13.



Baughman ANGEL FIRE PH. 2
LINE 2
 SANITARY SEWER IMPROVEMENTS

Baughman Company, P.A. 115 Ellis St. Wichita, KS 67211 P 316-263-7271 F 316-362-0149
 ENGINEERING | SURVEYING | PLANNING | LANDSCAPE ARCHITECTURE

PROJECT NUMBER: _____ DESIGN: AEG DRAWN: TNT
 REVISIONS: _____ APPROVED: AEG DATE: 03/31/2010
 SCALE: Noted
 SHEET: **7 OF 22**

Angel Fire/SS/02.09.SS.dwg 10-02-E454