




EROSION CONTROL PLAN LEGEND
(Installation Details Found in the SMP2 Plan)

-  - LIGHT STONE RIP-RAP
-  - DROP INLET PROTECTION
-  - CURB INLET PROTECTION
-  - STRAW BALE BARRIERS
-  - SILT FENCING
-  - EARTH DIKES
-  - VEGETATED AREA LEFT UNDISTURBED

NO SCALE

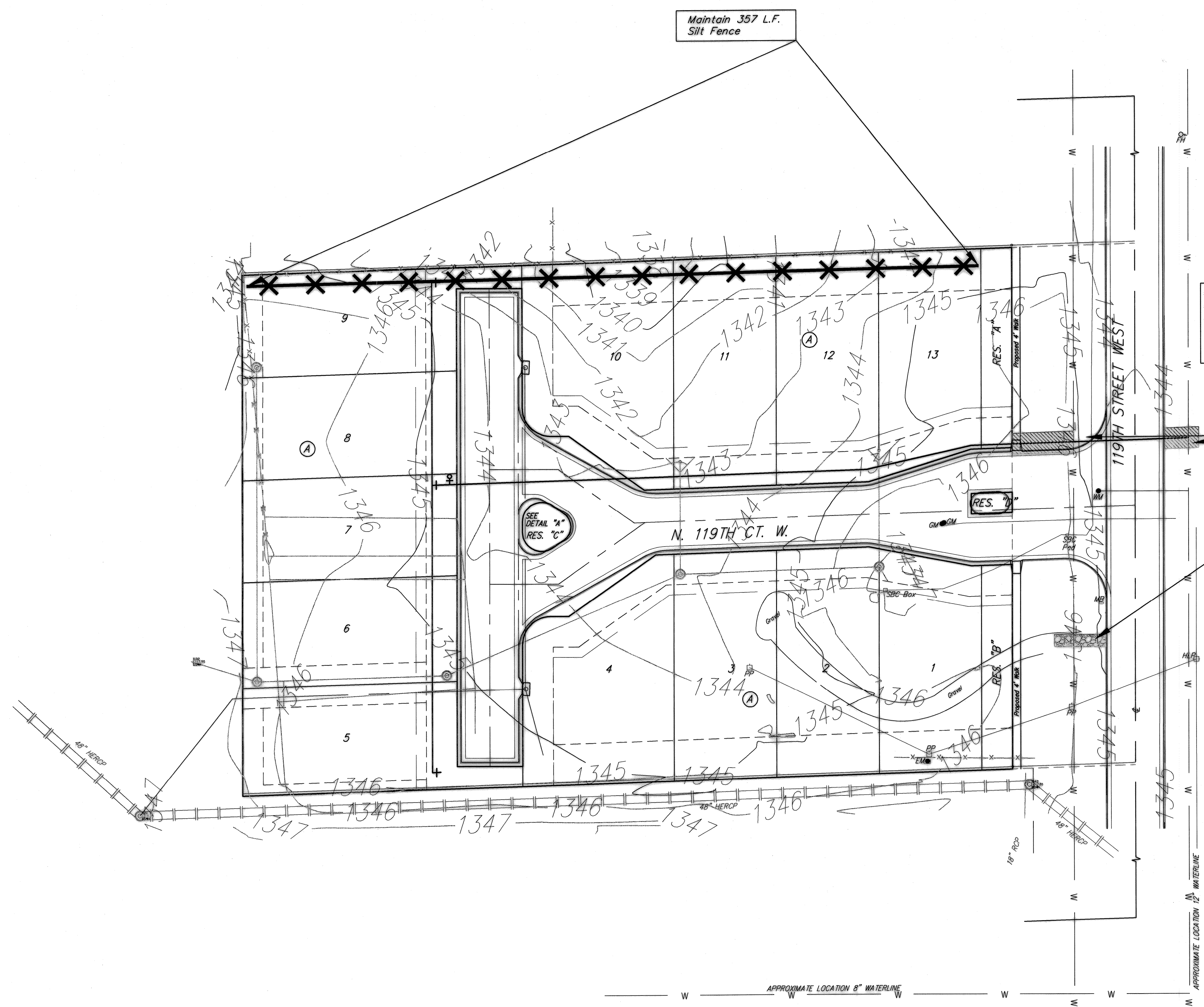
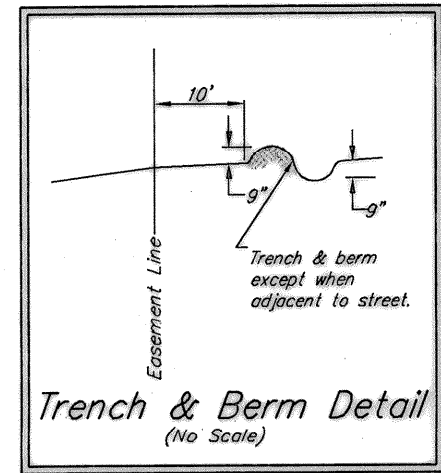
EROSION CONTROL MEASURE	UNITS	QUANTITY
SILT FENCE	L.F.	0
RIPRAP	S.Y.	0
DROP INLET BARRIER	EA.	0
CURB INLET BARRIER	EA.	0
STRAW BALE DITCH CHECK	EA.	0
TRENCH & BERM	L.F.	0
CURLEX	S.Y.	0
POND E.C. BLANKET	S.Y.	0
Construction Entrance	EA.	0

QUANTITIES ARE FOR INFORMATION ONLY!
CONTRACTOR SHALL VERIFY QUANTITIES PER FINAL BID QUANTITY SHEET.

Maintain one construction entrance onto existing gravel driveway per detail, sheet 10.

NOTE: Contractor shall remove & replace existing erosion control measures as necessary for construction. Contractor shall be required to maintain all on-site erosion control items until final acceptance by the City of Wichita.

Remove trees only as necessary for sanitary sewer construction and only with permission of Developer or Baughman Co. Cost of removal to be incidental to lump sum bid item "Site Clearing & Restoration".

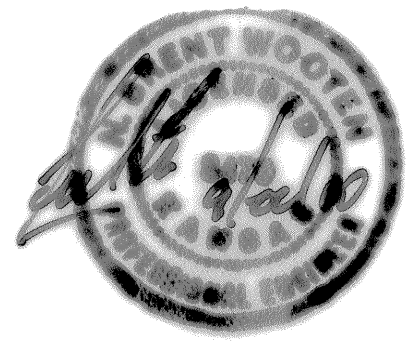



Scale: 1" = 30'

All areas disturbed by water line construction in 119th Street R/W shall be seeded and mulched as follows: (Permanent Seeding)
SEED -- Kansas Premium Fescue Blend; 8#/1000 Sq. Ft.
FERTILIZER -- 12-24-12 Ratio at 350 Lbs./Ac.
MULCH -- 2 Tons Prairie Hay / Acre

Install 52 s.y. Curlex II erosion control mat.

Maintain one temporary construction entrance.



		Koker Addition EROSION CONTROL PLAN Wichita, Kansas	
<small>Baughman Company, P.A. 315 Ellis St. Wichita, KS 67211 P 316-262-7271 F 316-262-0149 ENGINEERING SURVEYING PLANNING LANDSCAPE ARCHITECTURE</small>			
PROJECT NUMBER 468	DESIGN TJW	DRAWN JEB	
REVISIONS:	APPROVED AEG	DATE	
	SCALE Noted		
	SHEET		4 OF 10

Feng\Koker Addition\WTR\WTRCplan.dwg