

PLAN	CHECKED	DATE
	CHECKED	

PROFILE	CHECKED	DATE
	CHECKED	

Saved: 09-01-2008 3:54:40 PM by: T.S.
 Plot Scale
 01/2008 1083849101/1083849101-6-25282P/PLM

N: 26,968.5990, E: 16,417.7192
 Sta. 0+00.0
 Existing Precast Concrete MH.
 Connect new 8" Pipe to
 existing 8" Stub.

CAUTION !!!
 Buried Telephone (AT&T)
 Buried Electric (Sedgwick County Elect.)
 Buried CATV (Cox Communications)

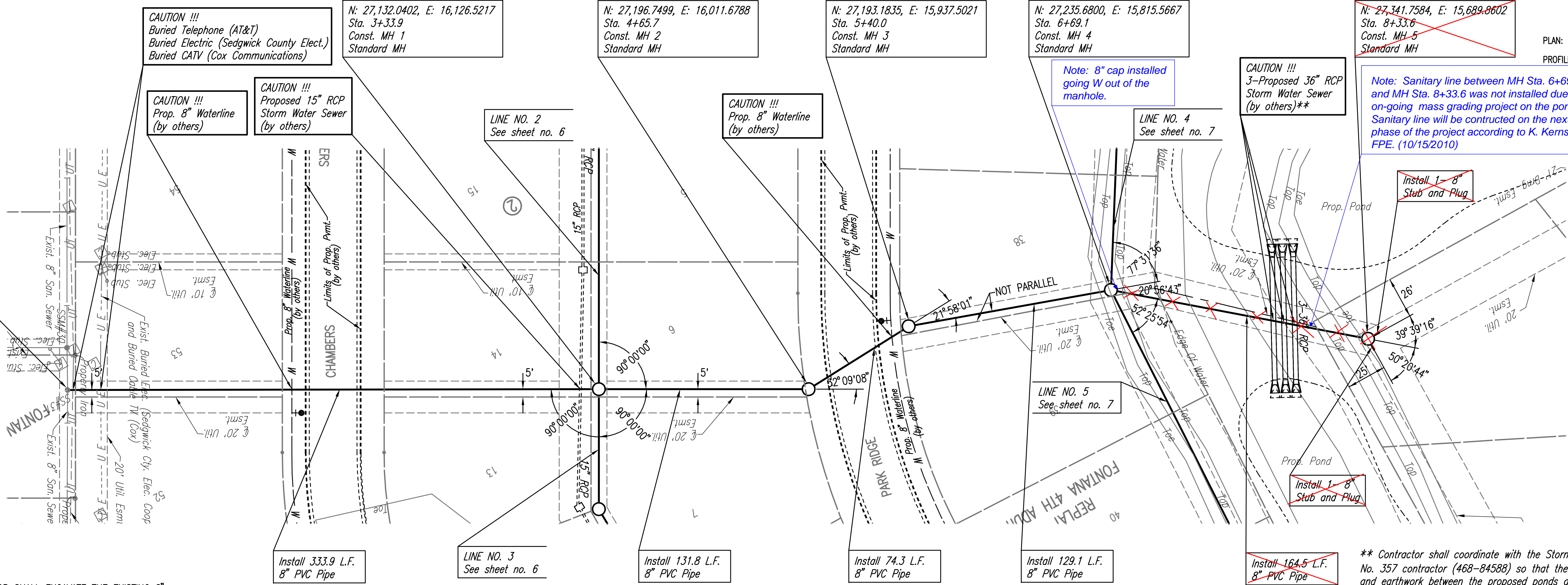
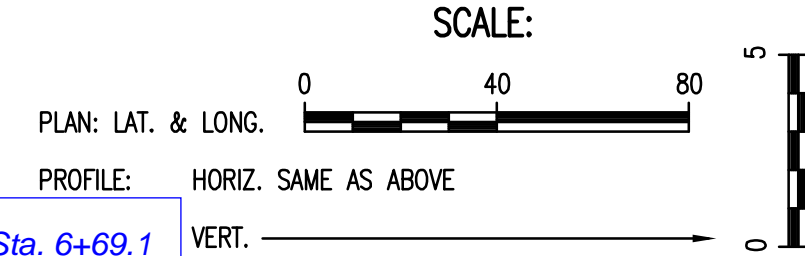
N: 27,132.0402, E: 16,126.5217
 Sta. 3+33.9
 Const. MH 1
 Standard MH

N: 27,196.7499, E: 16,011.6788
 Sta. 4+65.7
 Const. MH 2
 Standard MH

N: 27,193.1835, E: 15,937.5021
 Sta. 5+40.0
 Const. MH 3
 Standard MH

N: 27,235.6800, E: 15,815.5667
 Sta. 6+69.1
 Const. MH 4
 Standard MH

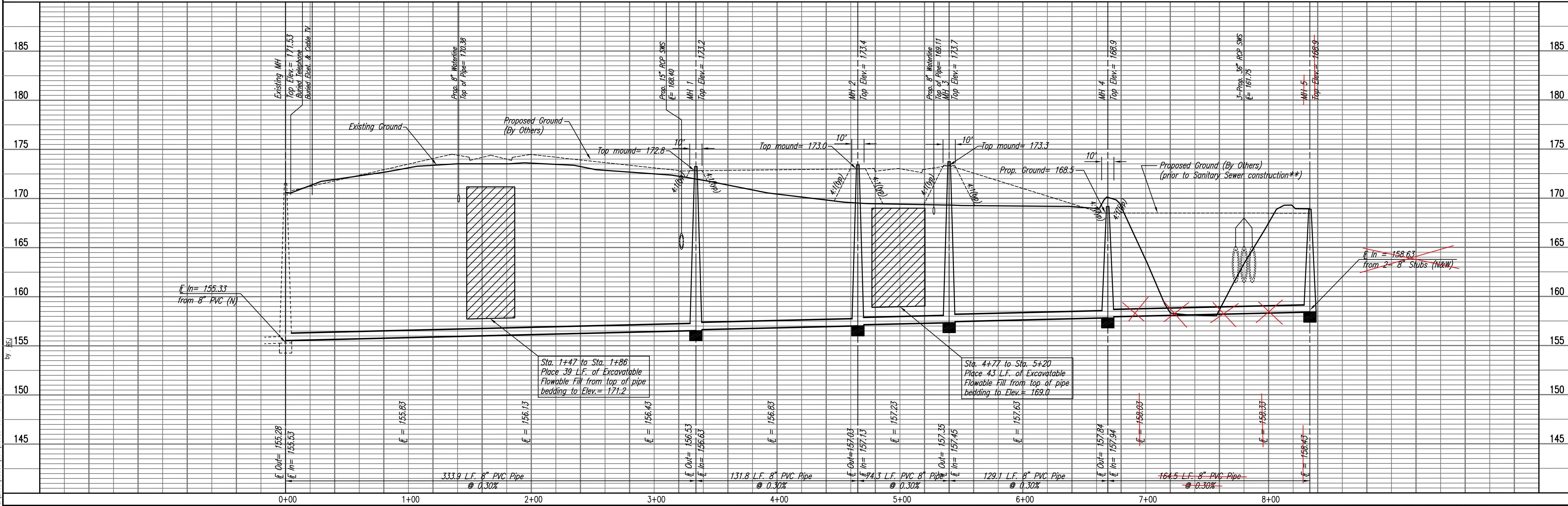
~~N: 27,341.7584, E: 15,689.8602
 Sta. 8+33.6
 Const. MH 5
 Standard MH~~



* PRIOR TO BEGINNING CONSTRUCTION, THE CONTRACTOR SHALL EXCAVATE THE EXISTING 8" PVC PIPE AT SANITARY SEWER STATION 0+00.0 TO VERIFY ITS HORIZONTAL AND VERTICAL LOCATION. THE PIPE LOCATION SHALL BE REPORTED TO THE ENGINEER SO THAT ANY NECESSARY PLAN MODIFICATIONS CAN BE MADE. ANY ADDITIONAL LABOR OR MATERIALS NECESSARY TO COMPLETE THE CONNECTION SHALL BE CONSIDERED SUBSIDIARY TO THE PROJECT.

** Contractor shall coordinate with the Storm Water Drain No. 357 contractor (468-84588) so that the SWS pipes and earthwork between the proposed ponds are completed prior to constructing the sanitary sewer between MH's 4 and 5. No additional payment will be made for coordination efforts or re-mobilization to install this section of the sanitary sewer.

SANITARY SEWER LINE NO. 1



LATERAL 16, MAIN 7
 OF THE NORTHWEST INTERCEPTOR SEWER
 SANITARY SEWER LINE NO. 1
 JAMES L. ARMOUR, P.E. - CITY ENGINEER
 CITY OF WICHITA PROJECT NO. 468-84584

Professional Engineering Consultants, P.A.
 903 S. TOPICKA AVENUE, WICHITA, KANSAS 67202
 316-262-2691 • FAX 316-262-3003

Job No. 35-08389-001-042
 Date July 2008

Designed By MDK
 Drawn By T.S.

Sheet 6 of 18