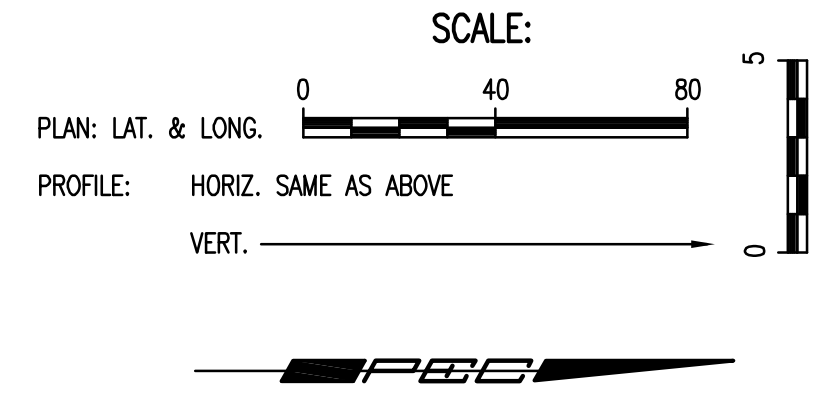
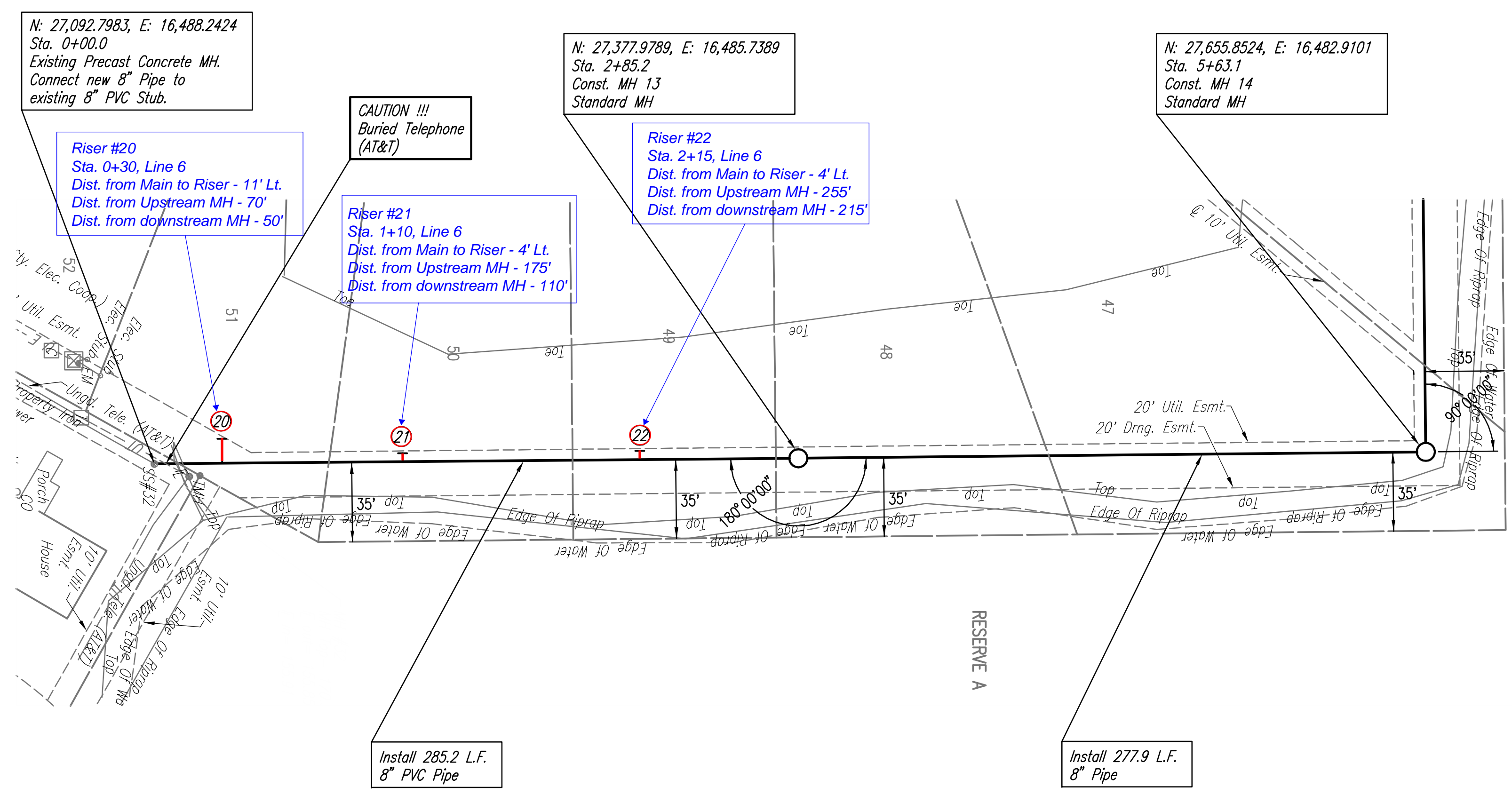


PLAN	CHECKED	CHECKED	BY	DATE

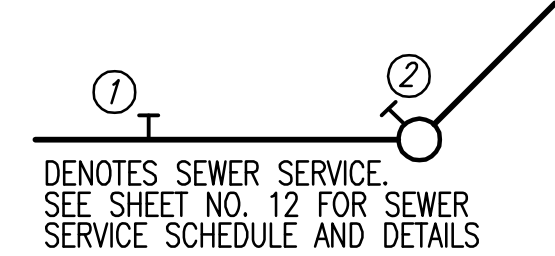
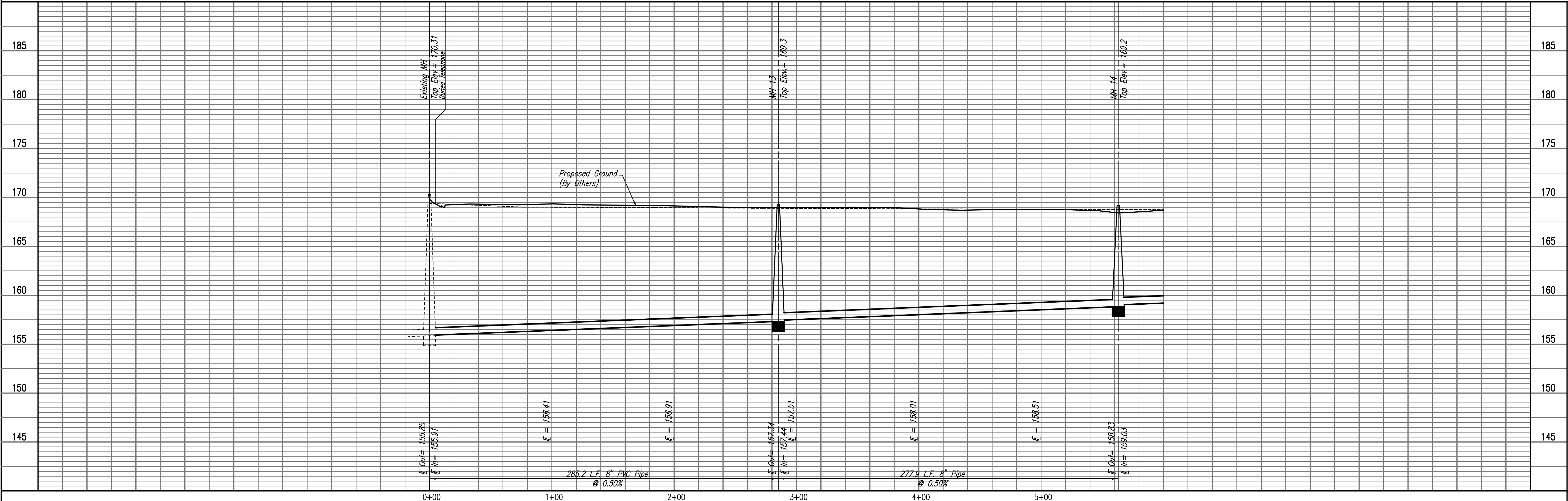
PROFILE	CHECKED	CHECKED	BY	DATE

09-01-2009 3:56:26 PM by JLS
 Plot Scale 1:40 09-01-2009 4:20:23 PM by BEJ
 09-01-2009 08:39:00 001.06399-001-C-SSPP04



* PRIOR TO BEGINNING CONSTRUCTION, THE CONTRACTOR SHALL EXCAVATE THE EXISTING 8" PVC PIPE AT SANITARY SEWER STATION 0+00.0 TO VERIFY ITS HORIZONTAL AND VERTICAL LOCATION. THE PIPE LOCATION SHALL BE REPORTED TO THE ENGINEER SO THAT ANY NECESSARY PLAN MODIFICATIONS CAN BE MADE. ANY ADDITIONAL LABOR OR MATERIALS NECESSARY TO COMPLETE THE CONNECTION SHALL BE CONSIDERED SUBSIDIARY TO THE PROJECT.

SANITARY SEWER LINE NO. 6



LATERAL 16, MAIN 7
 OF THE NORTHWEST INTERCEPTOR SEWER
SANITARY SEWER LINE NO. 6
 JAMES L. ARMOUR, P.E. - CITY ENGINEER
 CITY OF WICHITA PROJECT NO. 468-84584

Professional Engineering Consultants, P.A.
 603 S. TOPICKA AVENUE, WICHITA, KANSAS 67202
 316-262-2691 • FAX 316-262-3003

Job No. 35-08389-001-042
 Date July 2008

Designed By MDK
 Drawn By TLS