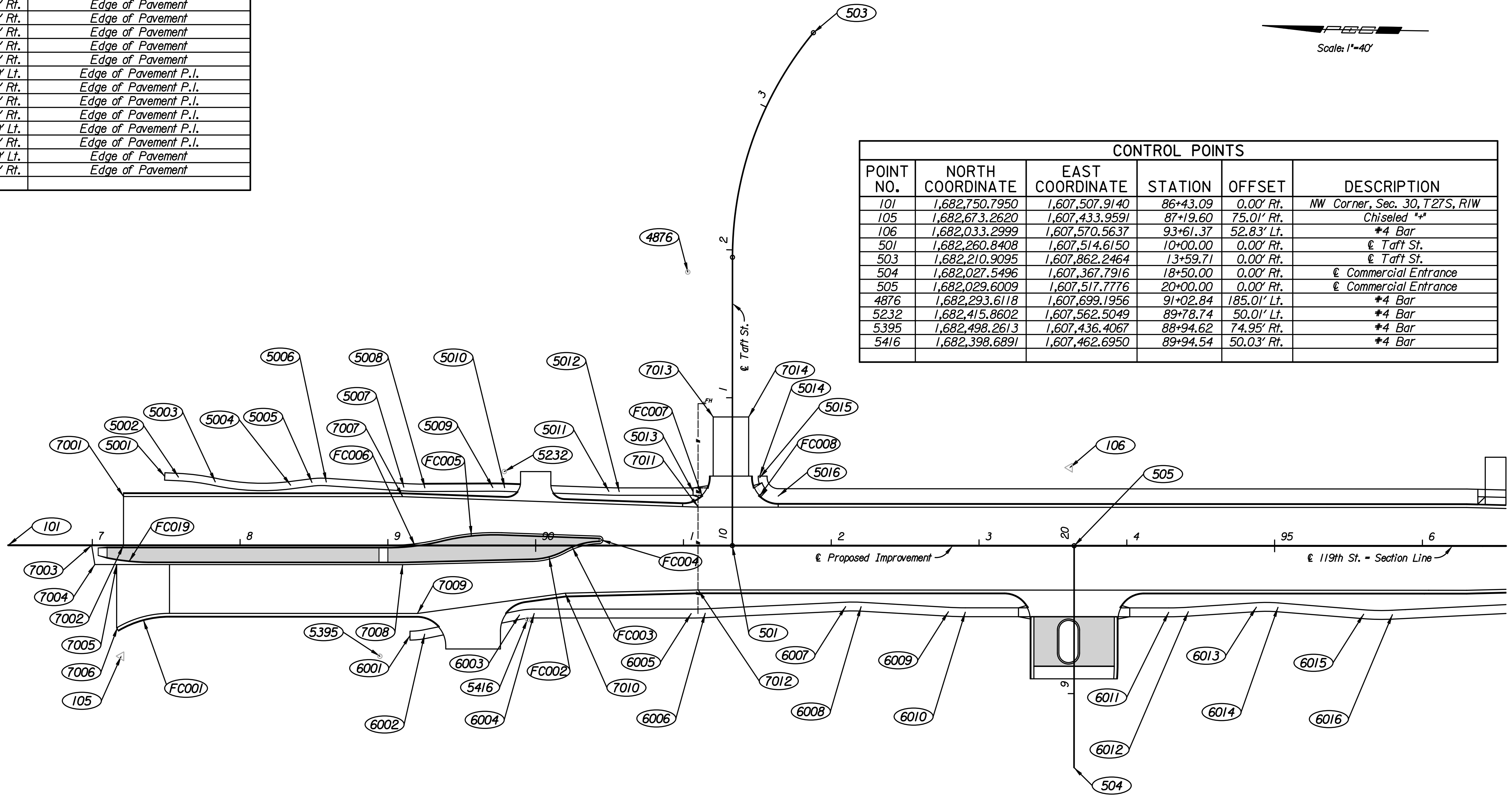


COORDINATE TABLE					
POINT NO.	NORTH COORDINATE	EAST COORDINATE	STATION	OFFSET	DESCRIPTION
7001	1,682,673.2321	1,607,541.9779	87+21.11	33.00' Lt.	Edge of Pavement
7002	1,682,672.7808	1,607,508.9810	87+21.11	0.00' Rt.	Edge of Pavement
7003	1,682,694.3188	1,607,508.6864	86+99.57	0.00' Rt.	Edge of Pavement
7004	1,682,692.0012	1,607,495.7169	87+01.71	13.00' Rt.	Edge of Pavement
7005	1,682,677.2126	1,607,495.9192	87+16.50	13.00' Rt.	Edge of Pavement
7006	1,682,676.6270	1,607,453.1057	87+16.50	55.82' Rt.	Edge of Pavement
7007	1,682,484.3597	1,607,544.5611	89+10.00	33.00' Lt.	Edge of Pavement P.I.
7008	1,682,483.7307	1,607,498.5654	89+10.00	13.00' Rt.	Edge of Pavement P.I.
7009	1,682,473.2803	1,607,465.7052	89+20.00	46.00' Rt.	Edge of Pavement P.I.
7010	1,682,373.4777	1,607,480.8215	90+20.00	32.25' Rt.	Edge of Pavement P.I.
7011	1,682,284.2827	1,607,540.2968	91+10.00	26.00' Lt.	Edge of Pavement P.I.
7012	1,682,283.5169	1,607,484.3021	91+10.00	30.00' Rt.	Edge of Pavement P.I.
7013	1,682,275.0294	1,607,601.4291	10+87.00	13.00' Lt.	Edge of Pavement
7014	1,682,251.0316	1,607,601.7573	10+87.00	11.00' Rt.	Edge of Pavement

See Sh. No. 18 for Sidewalk Coordinate Table (Point Nos. 5000-6157)

CONTROL POINTS					
POINT NO.	NORTH COORDINATE	EAST COORDINATE	STATION	OFFSET	DESCRIPTION
101	1,682,750.7950	1,607,507.9140	86+43.09	0.00' Rt.	NW Corner, Sec. 30, T27S, R1W
105	1,682,673.2620	1,607,433.9591	87+19.60	75.01' Rt.	Chiseled *+*
106	1,682,033.2999	1,607,570.5637	93+61.37	52.83' Lt.	*4 Bar
501	1,682,260.8408	1,607,514.6150	10+00.00	0.00' Rt.	€ Taft St.
503	1,682,210.9095	1,607,862.2464	13+59.71	0.00' Rt.	€ Taft St.
504	1,682,027.5496	1,607,367.7916	18+50.00	0.00' Rt.	€ Commercial Entrance
505	1,682,029.6009	1,607,517.7776	20+00.00	0.00' Rt.	€ Commercial Entrance
4876	1,682,293.6118	1,607,699.1956	91+02.84	185.01' Lt.	*4 Bar
5232	1,682,415.8602	1,607,562.5049	89+78.74	50.01' Lt.	*4 Bar
5395	1,682,498.2613	1,607,436.4067	88+94.62	74.95' Rt.	*4 Bar
5416	1,682,398.6891	1,607,462.6950	89+94.54	50.03' Rt.	*4 Bar



CURVE DATA													
NO.	Δ	R	T	L	E	P.C. COORDINATES		P.I. COORDINATES		P.T. COORDINATES		C.C. COORDINATES	
						NORTH	EAST	NORTH	EAST	NORTH	EAST	NORTH	EAST
FC001	30°42'41" Rt.	68.00'	18.67'	36.45'	2.52'	1,682,675.5822	1,607,451.4003	1,682,659.6593	1,607,461.1560	1,682,640.9873	1,607,461.4113	1,682,640.0573	1,607,393.4177
FC002	27°07'36" Lt.	48.75'	11.76'	23.08'	1.40'	1,682,396.0486	1,607,503.2087	1,682,384.2965	1,607,503.6634	1,682,374.0445	1,607,509.4266	1,682,397.9334	1,607,551.9223
FC003	27°07'36" Rt.	51.25'	12.36'	24.26'	1.47'	1,682,374.0445	1,607,509.4266	1,682,363.2667	1,607,515.4853	1,682,350.9119	1,607,515.9633	1,682,348.9306	1,607,464.7516
FC004	176°33'48" Lt.	1.25'	41.67'	3.85'	40.44'	1,682,350.9119	1,607,515.9633	1,682,309.2754	1,607,517.5742	1,682,350.9336	1,607,518.4621	1,682,350.9603	1,607,517.2124
FC005	15°51'39" Lt.	148.75'	20.72'	41.18'	1.44'	1,682,416.9668	1,607,519.8694	1,682,437.6833	1,607,520.3110	1,682,457.7317	1,607,515.0739	1,682,420.1364	1,607,371.1532
FC006	13°51'22" Rt.	151.25'	18.38'	36.58'	1.11'	1,682,457.7317	1,607,515.0739	1,682,475.5136	1,607,510.4288	1,682,493.8904	1,607,510.1775	1,682,495.9588	1,607,661.4134
FC007	92°00'16" Lt.	18.00'	18.64'	28.90'	7.91'	1,682,294.8553	1,607,542.5226	1,682,276.2185	1,607,542.1254	1,682,276.4734	1,607,560.7647	1,682,294.4717	1,607,560.5185
FC008	90°00'00" Lt.	18.00'	18.00'	28.27'	7.46'	1,682,248.4711	1,607,560.7885	1,682,248.2250	1,607,542.7902	1,682,230.2266	1,607,543.0363	1,682,230.4728	1,607,561.0346

Plotted By: djb Date: 9/7/2010 6:27:31 AM
 FILE: I:\2005\05789\Geometry\05789-Cogob6+50.dgn

No.		Revision		By		Date	
119TH STREET							
COORDINATE GEOMETRY PLAN							
STA. 86+43.09 TO STA. 96+00							
JAMES L. ARMOUR, P.E. - CITY ENGINEER CITY OF WICHITA PROJECT NO. 472-84850							
Professional Engineering Consultants, P.A. 303 S. TOPEKA - WICHITA, KANSAS 67202 316-262-2691 • FAX 316-262-3003							
Designed by	CKC	Job No.	05789	Sht.		13 of 152	
Drawn by	CP	Date	August 2010				