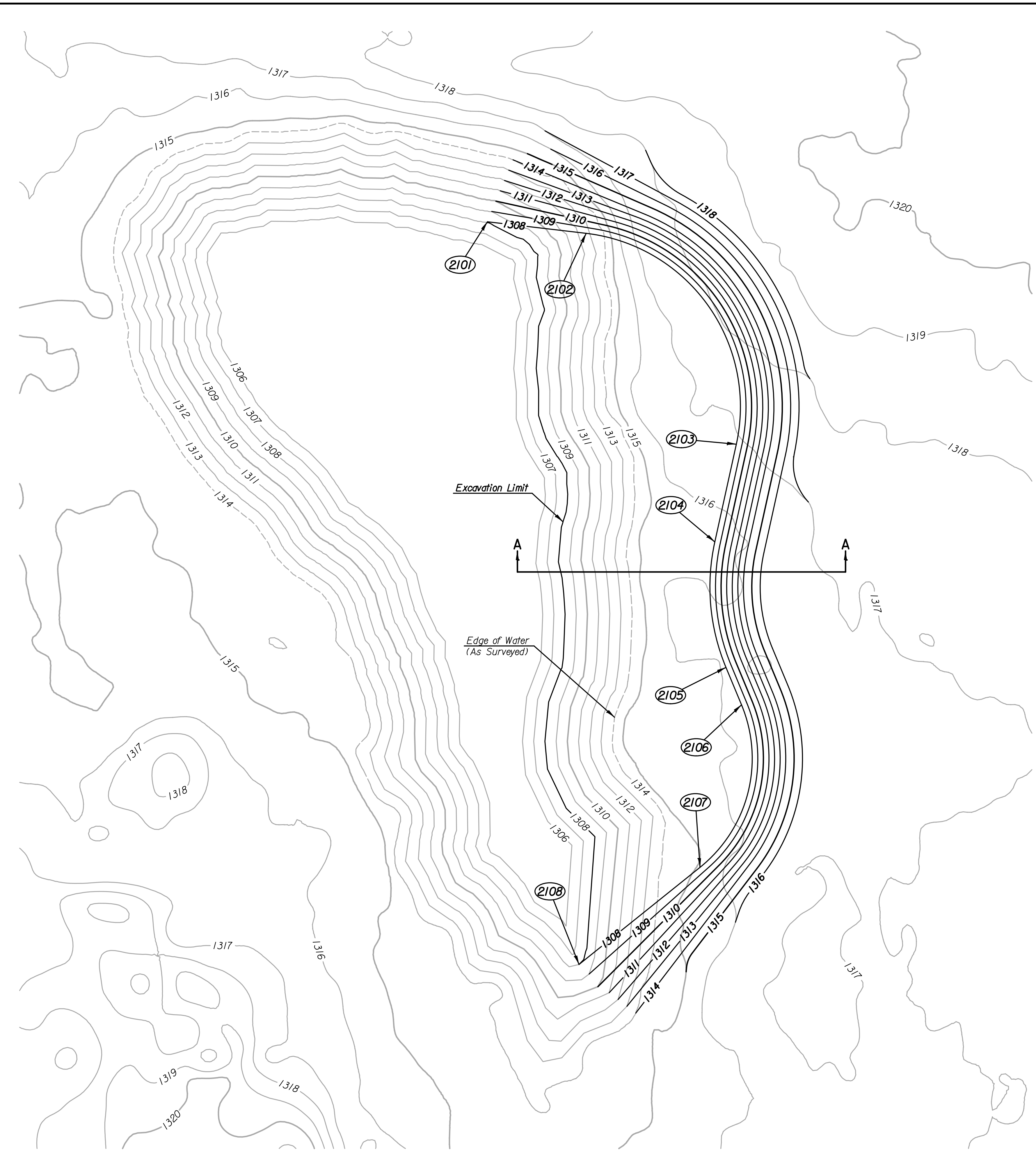
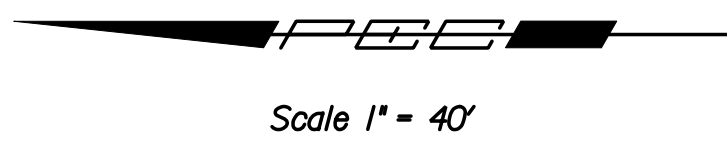
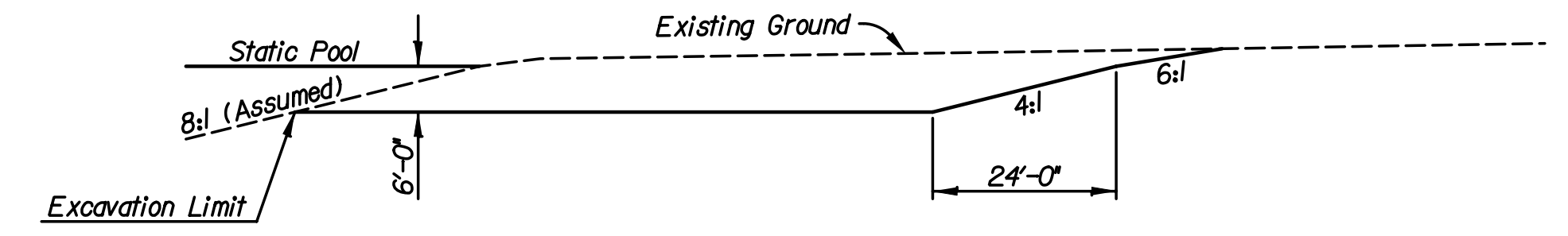


Plotted By: djb Date: 9/7/2010 6:39:44 AM
 FILE: I:\2005\05789\Plan\05789-Borrow Site Details.cgn



| COORDINATE LIST | | |
|-----------------|----------------|----------------|
| POINT | NORTHING | EASTING |
| 2101 | 1,679,721.7371 | 1,606,882.8339 |
| 2102 | 1,679,650.8990 | 1,606,875.5510 |
| 2103 | 1,679,541.2390 | 1,606,726.0564 |
| 2104 | 1,679,555.6611 | 1,606,655.8419 |
| 2105 | 1,679,546.3992 | 1,606,566.1069 |
| 2106 | 1,679,534.8788 | 1,606,539.4757 |
| 2107 | 1,679,562.9666 | 1,606,422.6799 |
| 2108 | 1,679,648.6539 | 1,606,351.8863 |

(2101) = COORDINATE POINT NO.



SECTION A-A

GENERAL NOTES

THE TOPSOIL SHALL BE STRIPPED PRIOR TO BORROW OPERATIONS. THE TOPSOIL SHALL BE DEPOSITED IN STOCKPILES, WITHOUT CONTAMINATION WITH SUBSOIL, AT APPROVED LOCATIONS. ANY EXCESS TOPSOIL THAT WILL NOT BE NEEDED FOR THE EMBANKMENT, SHALL REMAIN AT THE BORROW SITE.

DEWATERING IS NOT MANDATORY FOR BORROW SITE EXCAVATION. THE CONTRACTOR MAY, AT HIS/HER OPTION, DEWATER FOR EASE OF EXCAVATION. GROUNDWATER REMOVED FOR ANY DEWATERING OPERATION MUST BE PROPERLY DIRECTED TO THE MAIN CHANNEL OF THE CALFSKIN CREEK. THE CONTRACTOR MUST OBTAIN ANY AND ALL NECESSARY PERMITS.

| | | |
|-----------------|---|----------------|
| | No. _____ Revision _____ By _____ Date _____ | |
| | 119TH STREET BORROW SITE DETAILS | |
| | JAMES L. ARMOUR, P.E. - CITY ENGINEER CITY OF WICHITA PROJECT NO. 472-84850 | |
| | Professional Engineering Consultants, P.A. 303 S. TOPEKA - WICHITA, KANSAS 67202 316-262-2691 • FAX 316-262-3003 | |
| Designed by CKC | Job No. 05789 | Sht. 38 of 152 |
| Drawn by CKC | Date August, 2010 | |