

SU Project 562-855106

STORM WATER SEWER IMPROVEMENTS

to serve

FAIRWAY AVENUE - PHASE II

CITY OF WICHITA, KANSAS

James L. Armour, P.E. City Engineer

Project Number

468-84197

O.C.A. Number:

133117

MIES CONSTRUCTION - CONTRACTOR  
 K. KERNS - CITY OF WICHITA, FIELD PROJ. ENGR.  
 M. SHOLANDER - CITY OF WICHITA, INSPECTOR  
 AS-BUILT  
 RELEASE DATE: 04/27/2010  
 A.P.R.S. 09/07/2010

SHEET INDEX

Title Sheet	1
Line 1 & 1A	2-3
Standard Water Detail	4
Water Service Replacement Tables	5
Type 1 Inlet Detail	6
Standard Manhole Detail	7
Ring & Cover Detail	8
Pavement Detail	9
Valley Gutter Detail	10
Pavement Plan	11
Erosion Control BMP's	Avail on request

45° BENDS - TYLER

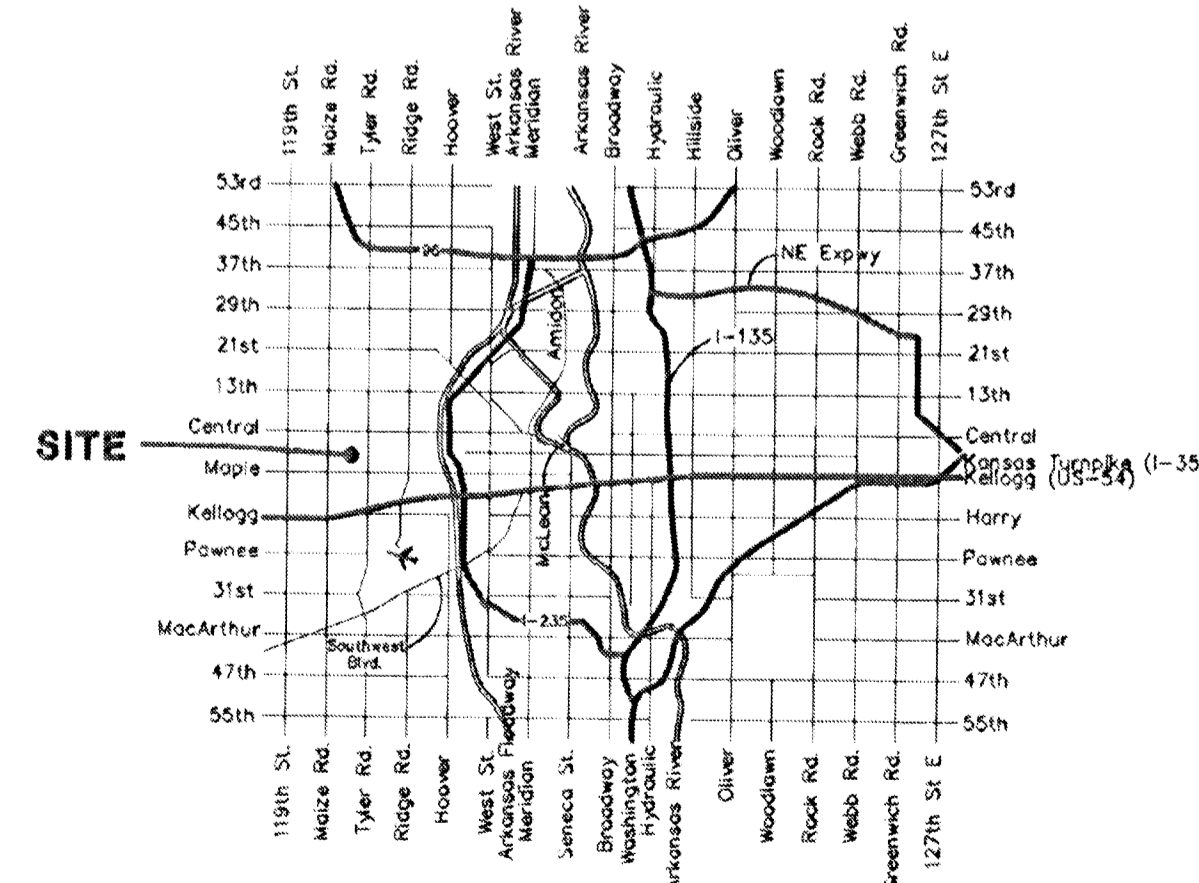
GENERAL NOTES:

- Contractor will be required to provide notice to utility companies a minimum of forty-eight (48) hours prior to any excavation, as follows:  
 Kansas One-Call 687-2470  
 The Contractor must notify the following in case of an emergency:  
 Cox Communications 262-4270  
 Kansas Gas Service 1-888-482-4950  
 Westor Energy 383-8650  
 Aquila Energy 1-800-303-0357  
 AT&T 268-2762  
 City of Wichita Water Dept. 268-4563  
 City of Wichita Sewer Maint. 268-4024  
 City of Wichita Storm Sewer Maint. 268-4090  
 City of Wichita Traffic Maint. 268-4034  
 Conoco Phillips Pipeline 1-877-267-2290  
 Southern Star Pipeline 529-6600  
 Kinder Morgan Pipeline 1-888-844-5658  
 Enbridge Pipeline 1-800-323-6241
- Utility service lines, poles, valve boxes, meters, and etcetera are to be adjusted as necessary by others prior to construction unless the plans specifically call for their adjustment by the Contractor or unless the plans specifically identify a utility to be adjusted by its owner during construction. Existing utilities and their location, as shown on the plans, represent the best information obtainable for design. The Contractor will be required to work around existing utilities within the right-of-way which do not conflict with proposed construction.
- Rubble from the removal of miscellaneous structures and excess excavation which is to be wasted shall be disposed of off site at sites to be provided by the Contractor. All disposal sites must be approved by the Kansas Department of Health and Environment. Material either stockpiled or disposed of in a flood plain would require a Kansas State Board of Agriculture permit. Any material dumped in waters of the United States or wetlands is subject to U.S. Corps. of Engineers permitting regulations. Any material buried or stockpiled beyond approved construction limits would require additional archaeological investigations unless buried in a previously approved borrow location.
- Trees and shrubs in public right-of-way which are in direct conflict with proposed new construction shall be removed by the Contractor with the Engineer's approval. Trees and shrubs which are not in direct conflict with proposed new construction shall be saved and protected from damage.
- The Contractor shall give all property owners and/or tenants of developed property abutting the construction of this project a minimum of five (5) days notice prior to start of construction. Contractor shall install traffic control measures per MUTCD standard specifications. Contractor shall allow thru traffic during construction.
- All existing and proposed erosion control measures including silt fencing, erosion control mat, straw bales, inlet barriers, and const. entrance shall be maintained throughout construction by the contractor and until project is accepted by the City of Wichita. The on-site engineer shall complete weekly reports on the status of erosion control measures. The contractor shall be required to comply with maintenance and/or replacement of erosion control measures as determined by the on-site engineer until project is accepted by City of Wichita.
- All areas disturbed during construction shall be re-graded to pre-construction elevations and sodded with "in kind" sod. All excess excavation shall be disposed of off-site by the contractor at locations provided by the contractor. All irrigation systems and landscaping shall be restored to its pre-construction condition by a licensed landscaping/sprinkler contractor. All work required to restore elevations, sod, landscaping, irrigation systems, and to move excess excavation shall be incidental to "Site Clearing & Restoration" bid item.
- All paved areas in Fairway Avenue and Shade Avenue within limits of construction and outside of areas where full depth removal and replacement is either called out or necessary for construction, shall be milled down two inches and overlaid with A.C. pavement per City specs as shown on plans. Cost of mill and overlay to be paid as "2" Mill and Overlay (SC-1)" bid item.
- Storm water sewer pipe trenches are to be sand backfilled, vibrated and water jetted, per City specs. All costs associated with this are to be included in pipe costs. Storm water sewer pipe trenches are to have full depth removal and replacement of pavement, per City specs. Any full depth pavement removal and replacement from Sta. 0+00 to Sta. 6+39.3 is to be included in the pipe cost beyond Sta. 6+39.3, where necessary is paid under "AC Pavement 5"(3" Bit Base)."
- Contractor shall maintain continuous traffic flow and allow traffic access to all property owners during construction. The intersection of Shade and Fairway may be closed to traffic during construction of that location. All costs associated with this are to be included in "Site Clearing & Restoration" bid item.
- Contractor shall coordinate re-installment of water service lines and meters with the City of Wichita Water Department in order to maintain continuous water service to all residents. All costs associated with this are to be paid by the City of Wichita Water Department and not included in this bid. Removal of existing water service lines which are in conflict of construction are to be Contractor's responsibility.

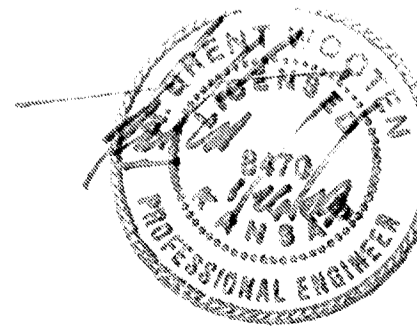
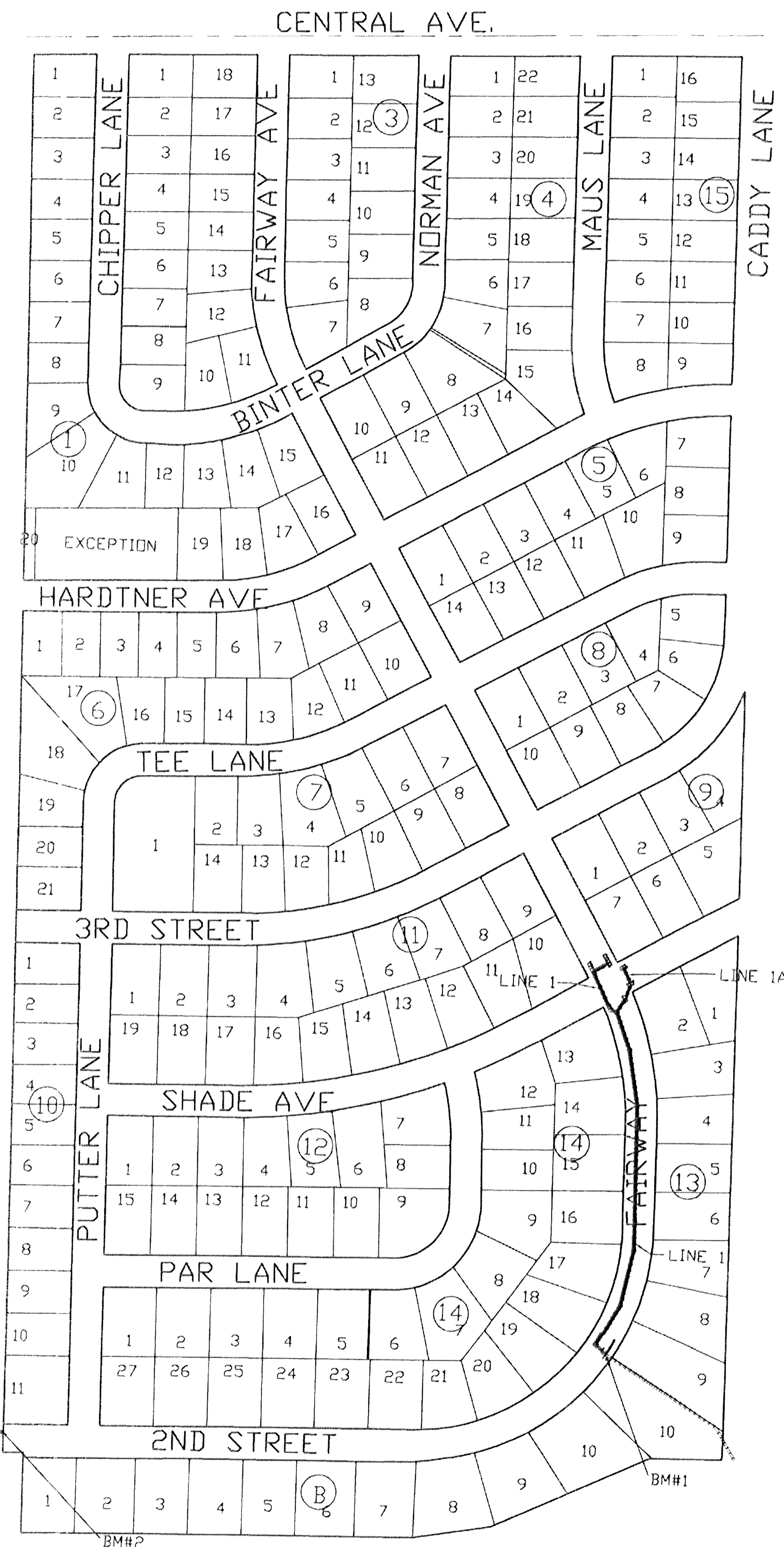
BENCHMARKS

BM #1: Rail Road Spike in light pole between Lots 9 & 10, Block 13, Westlink Village Addition, Wichita, Sedgwick County, KS.  
 Elevation = 1326.59 MSL

BM #2: "□" cut in top of curb, north side of 2nd Street, SW corner of Lot 11, Block 10, Westlink Village Addition, Sedgwick County, KS.  
 Elevation = 1321.62 MSL



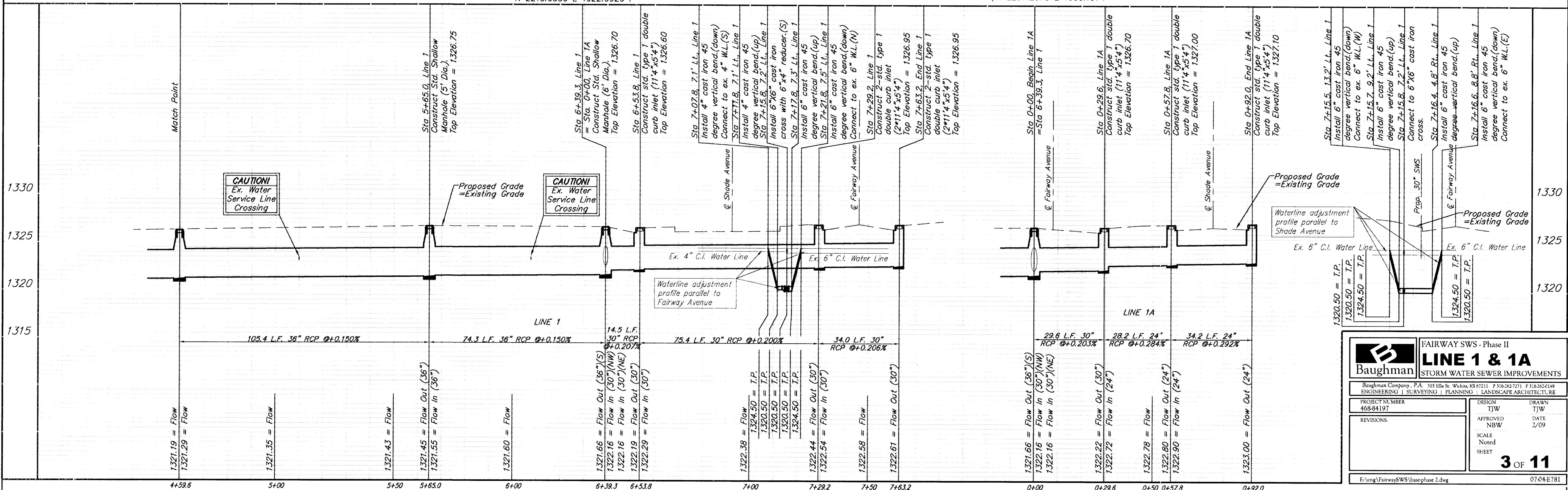
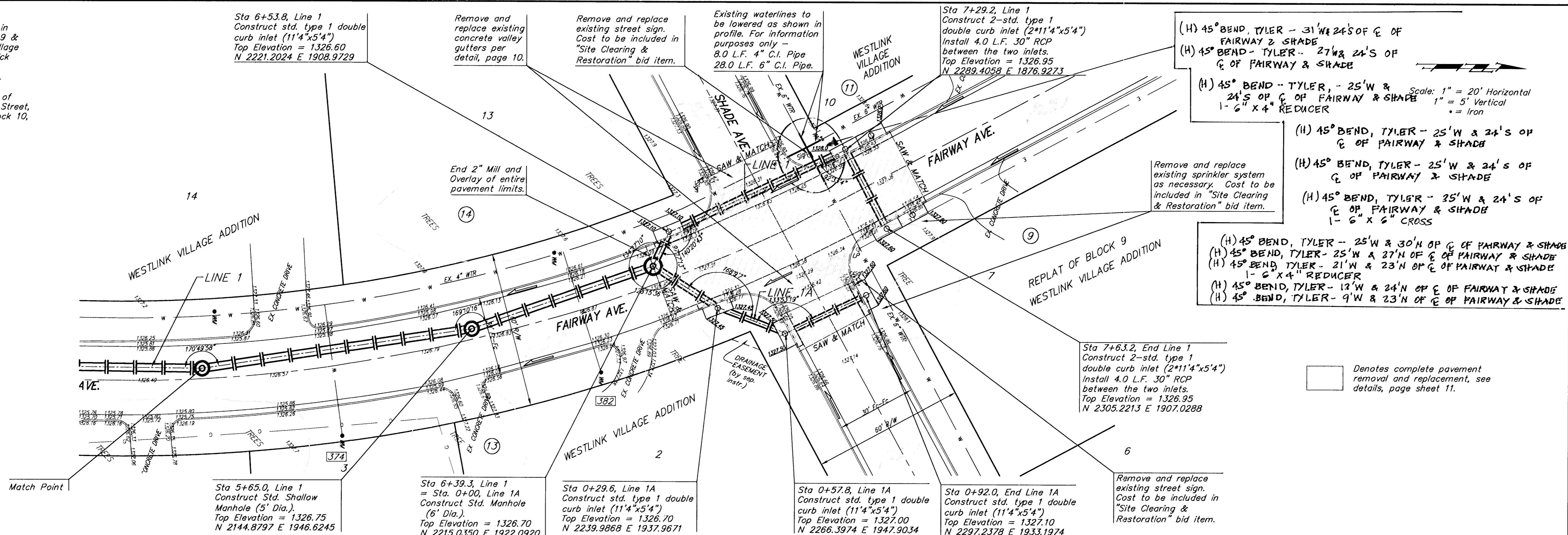
Vicinity Map



Baughman Company, P.A. 315 E 14th St. Wichita, KS 67211 P 316.262.7271 F 316.262.0149  
 ENGINEERING | SURVEYING | PLANNING | LANDSCAPE ARCHITECTURE

BM #1: Rail Road Spike in light pole between Lots 9 & 10, Block 13, Westlink Village Addition, Wichita, Sedgwick County, KS.  
Elevation = 1326.39 MSL

BM #2: "□" cut in top of curb, north side of 2nd Street, SW corner of Lot 11, Block 10, Westlink Village Addition, Sedgwick County, KS.  
Elevation = 1321.62 MSL



		FAIRWAY SWS - Phase II	
		<b>LINE 1 &amp; 1A</b>	
STORM WATER SEWER IMPROVEMENTS			
Baughman Company, P.A. 115 Ellis St. Wichita, KS 67211 P 316.542.7271 F 316.542.0149			
PROJECT NUMBER 468-84197		DESIGN TJW	
REVISIONS		APPROVED NBW	
		DATE 2/09	
		SCALE Noted	
		SHEET	
		<b>3 OF 11</b>	
E:\eng\FairwaySWS\bauphase 2.dwg		0704-E781	

TOTALS for WATER  
METER REPLACEMENTS:  
Short Services - 0  
Long Services - 7

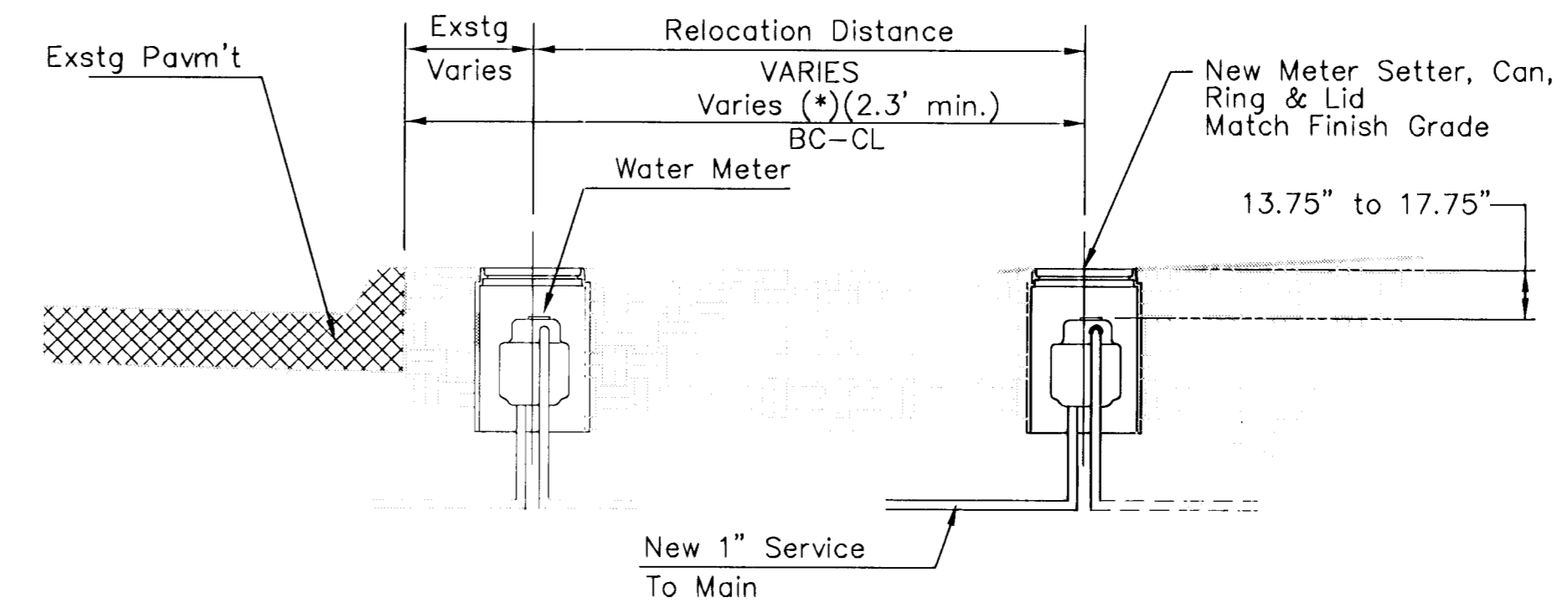
### Water Service Replacements

Address	SWS Station	Status
324 N. Fairway	0+49.7	Long
338 N. Fairway	1+27.7	Long
346 N. Fairway	2+58.2	Long
356 N. Fairway	3+49.0	Long
356 N. Fairway	3+57.7	Long
374 N. Fairway	5+09.9	Long
382 N. Fairway	6+07.8	Long

(\* Relocation of all water meters in conflict with construction of this project will be accomplished in conjunction with construction. Location of meter(s) will be typically set at least 2.3 ft. from the back of existing curbline to the centerline of meter box unless otherwise as directed by the Field Engineer.

The top of the meter box to be field set typically to match finish grade elevations unless otherwise as directed by the Field Engineer.

Replace meter setter, can, ring & lid. All work and materials required is to be INCIDENTAL to the quantity item  
NOTE: Each meter setter shall Require its own can, ring, & lid.  
"Long Water Service Replaced (EA.)"



Typical Water Meter Installation Detail