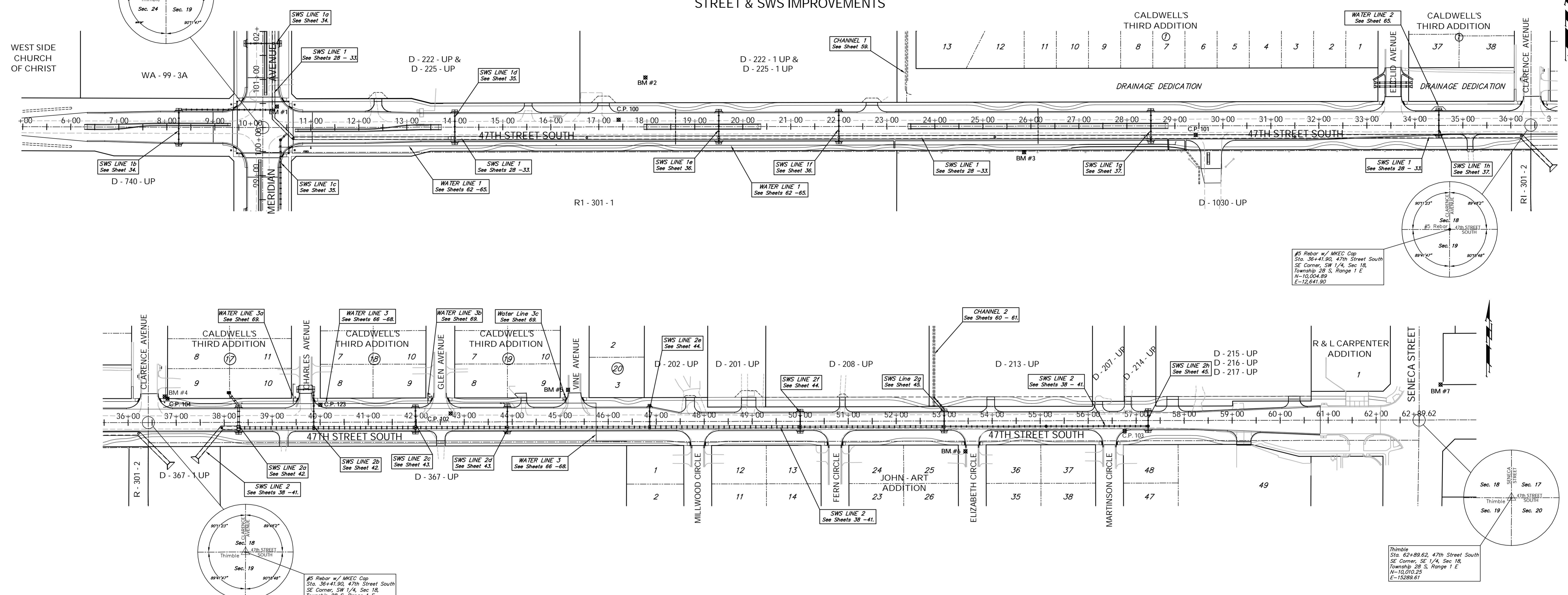


FHWA REGION NO.	STATE	PROJECT NO.	FISCAL YEAR	SHEET NO.	TOTAL SHEETS
7	KANSAS	87-N-0394-01	2010	2	129

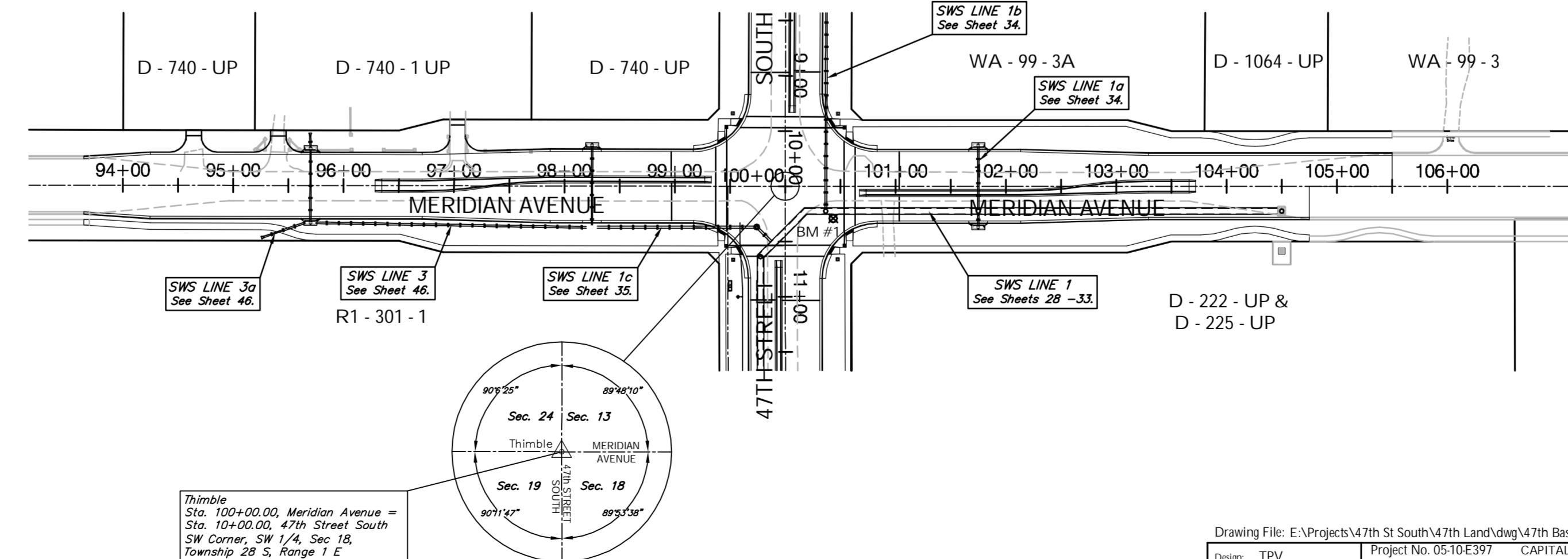
47th STREET SOUTH

STREET & SWS IMPROVEMENTS



MERIDIAN AVENUE

STREET & SWS IMPROVEMENTS



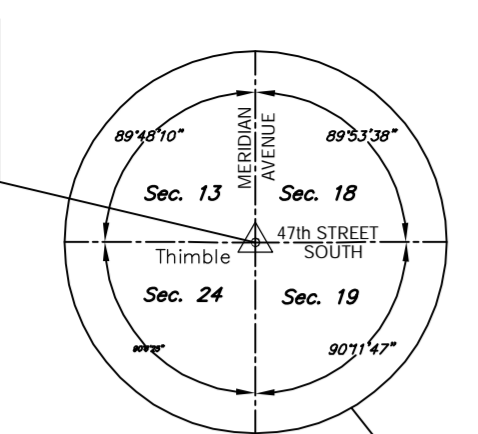
ADDITIONAL CONTROL POINTS

- C.P. 100 - Rebar w/ Green Cap
Sta. 17+41.34, 14.68' Lt.
N=10016.10
E=10741.34
- C.P. 101 - Rebar w/ Green Cap
Sta. 29+43.43, 19.30' Rt.
N=9884.30
E=11943.47
- C.P. 102 - PK Nail
Sta. 42+71.89, 17.73' Lt.
N=10023.90
E=13271.85
- C.P. 103 - Rebar w/ Green Cap
Sta. 56+76.16, 21.56' Rt.
N=9887.46
E=14676.19
- C.P. 104 - Chiseled "X" on Sidewalk
Sta. 36+81.80, 49.86' Lt.
N=10054.83
E=12681.70

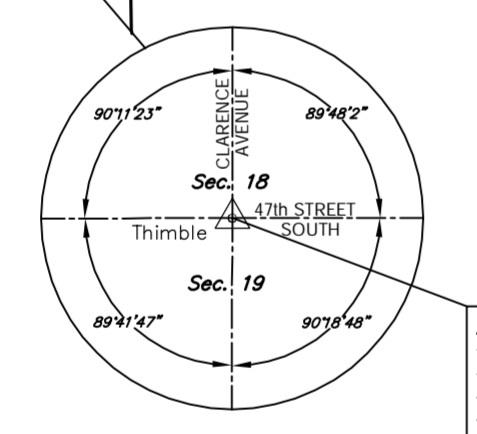
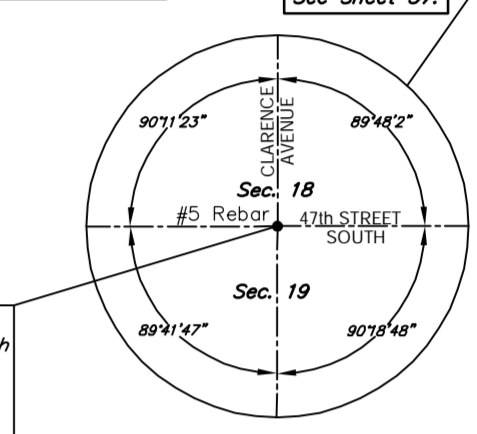
BENCHMARKS:

- BM #1 - City of Wichita Disc Located in the Northeast Corner of the Intersection of Meridian and 47th Street South
Sta. 10+29, 43' Lt.
Elev. = 1279.18 (MSL)
- BM #2 - Railroad Spike in the South Face of Wooden Fence Post 120' East of the Northwest Corner of the City Park Gravel Parking Lot
Sta. 17+97, 103' Lt.
Elev. = 1280.15 (MSL)
- BM #3 - Cut in the Concrete Base of Metal Fence Post 28' West of the Fourth Concrete Pillar West of the South Lakes Park Entrance
Sta. 25+06, 54' Rt.
Elev. = 1277.92 (MSL)
- BM #4 - City of Wichita Disc Located in the Northeast Corner of the Intersection of 47th Street South and Clarence Avenue
Sta. 36+56, 54' Lt.
Elev. = 1272.50 (MSL)
- BM #5 - Cut into Top of Curb in the Northwest Corner of the Intersection of 47th Street South and Vine Avenue
Sta. 45+17, 66' Lt.
Elev. = 1272.89 (MSL)
- BM #6 - Cut into Top of Curb in the Southwest Corner of the Intersection of 47th Street South and Elizabeth Circle
Sta. 53+44, 63' Rt.
Elev. = 1273.40 (MSL)
- BM #7 - City of Wichita Disc Located in the Northeast Corner of the Intersection of Seneca and 47th Street South
Sta. 63+35, 74' Lt.
Elev. = 1274.74 (MSL)

Thimble
Sta. 10+00.00, 47th Street South =
Sta. 100+00.00, Meridian Avenue
SW Corner, SW 1/4, Sec 18,
Township 28 S, Range 1 E
N=10,000.00
E=10,000.00

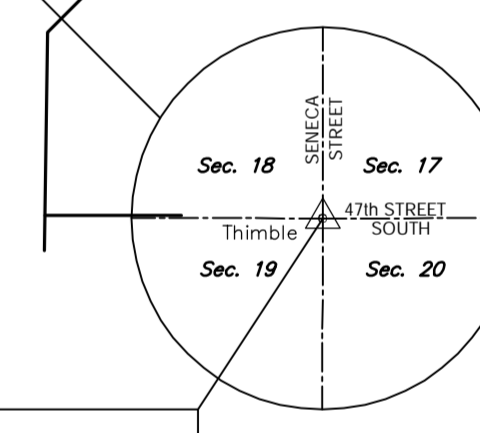


#5 Rebar w/ MKEC Cap
Sta. 36+41.90, 47th Street South
SE Corner, SW 1/4, Sec 18,
Township 28 S, Range 1 E
N=10,004.89
E=12,641.90

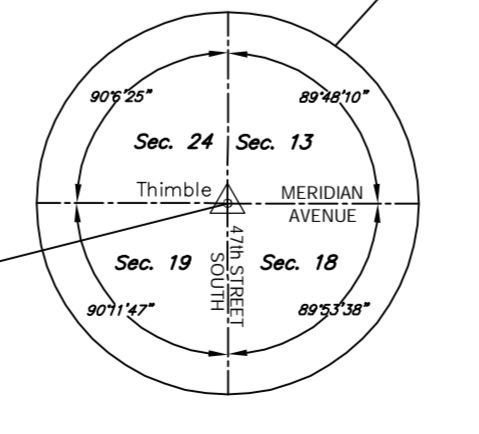


#5 Rebar w/ MKEC Cap
Sta. 36+41.90, 47th Street South
SE Corner, SW 1/4, Sec 18,
Township 28 S, Range 1 E
N=10,004.89
E=12,641.90

Thimble
Sta. 62+89.62, 47th Street South
SE Corner, SE 1/4, Sec 18,
Township 28 S, Range 1 E
N=10,010.28
E=15289.61



Thimble
Sta. 100+00.00, Meridian Avenue =
Sta. 10+00.00, 47th Street South
SW Corner, SW 1/4, Sec 18,
Township 28 S, Range 1 E
N=10,000.00
E=10,000.00



Design: TPV
Drawn: STAFF
Approved: TPV
Scale: 1" = 100'

Project No. 05-10E397 CAPITAL IMPROVEMENT PROJECT

PROJECT KEYSHEET

47TH STREET SOUTH - MERIDIAN AVENUE TO SENECA STREET

Baughman Company, P.A.
315 Ellis St., Wichita, KS 67211 P 316.262.1271 F 316.262.0149
TPVING | SURVEYING | PLANNING | LANDSCAPE ARCHITECTURE