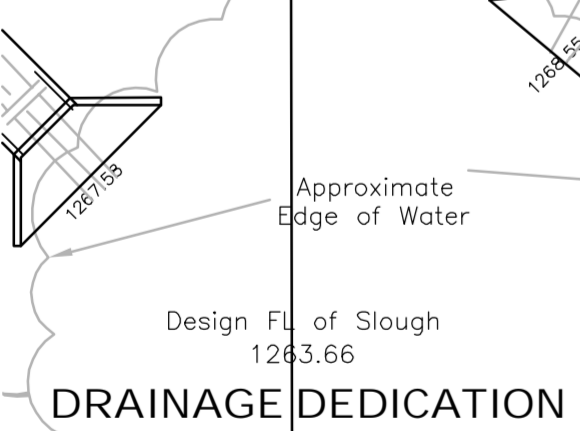
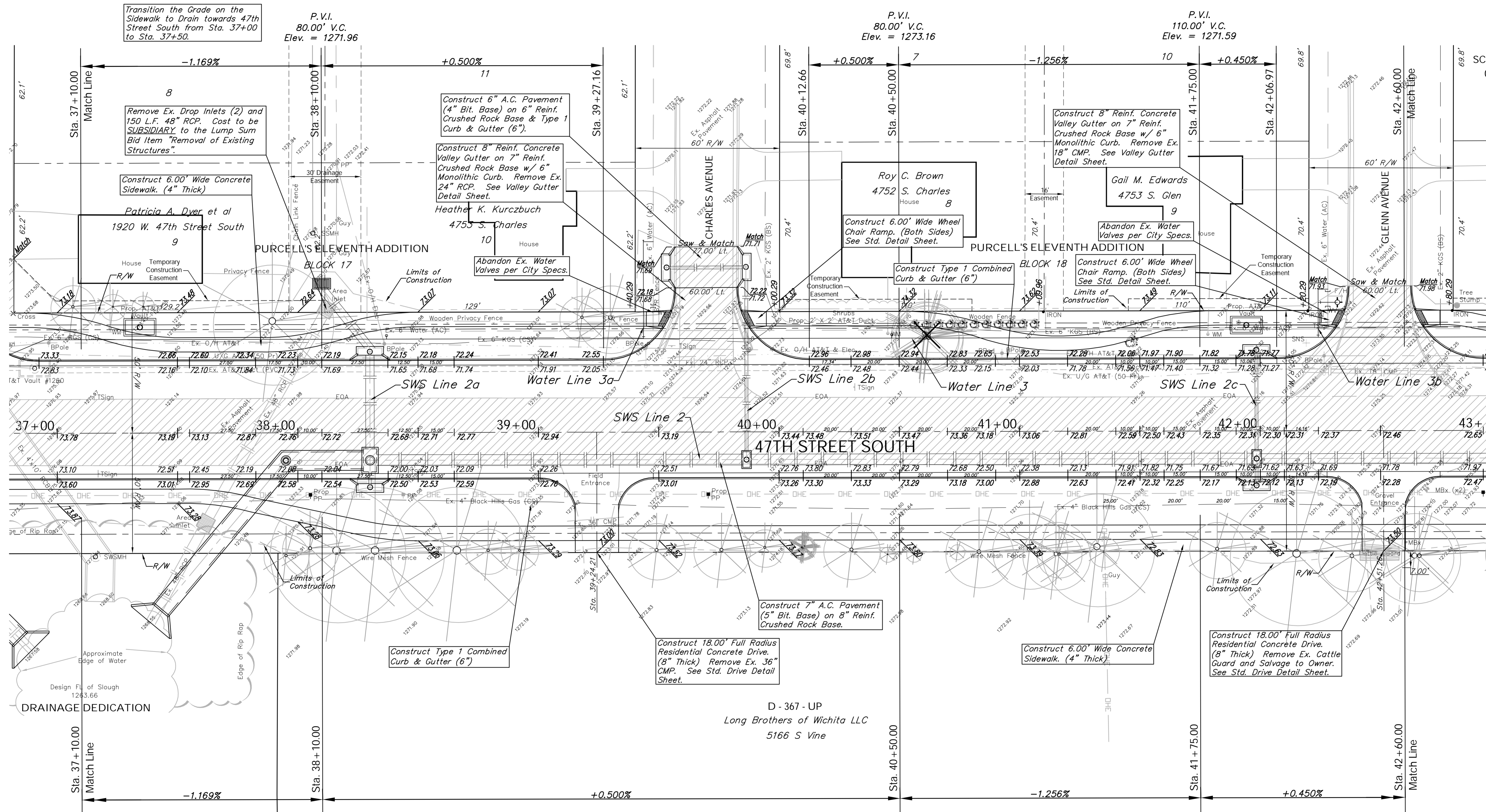
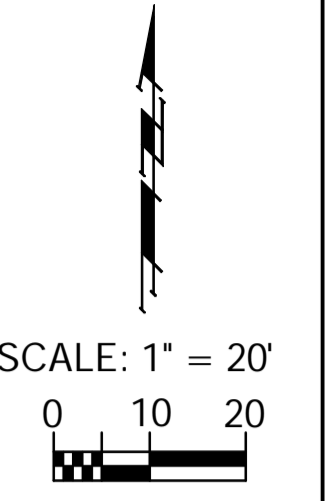


BENCHMARK:
 BM #4 - City of Wichita Disc Located in the Northeast Corner of the Intersection of 47th Street South and Clarence Avenue
 Sta. 36+56, 54' Lt.
 Elev. = 1272.50 (MSL)

FHWA REGION NO.	STATE	PROJECT NO.	FISCAL YEAR	SHEET NO.	TOTAL SHEETS
7	KANSAS	87 N-0394-01	2010	17	129



Existing Mailboxes that Conflict with the Proposed Construction Shall be Removed and Reset on Non-Hazardous Supports. Cost to be SUBSIDIARY to "Site Restoration."

Note:
 Pavement, Sidewalks, and Etc. To Be Removed Are Indicated By:

Note:
 Trees/Shrubs to be removed are marked thus:

Drawing File: E:\Projects\47th St South\47th Land\dwg\47th Base.dwg (Pw07)
 Project No. 05-10E397 CAPITAL IMPROVEMENT PROJECT
47TH STREET SOUTH PAVING
 Sta. 37 + 10.00 to Sta. 42 + 60.00
 47TH STREET SOUTH - MERIDIAN AVENUE TO SENECA STREET

Baughman Company, P.A.
 315 Ellis St., Wichita, KS 67211 P 316.262.1271 F 316.262.0149
 TYPING | SURVEYING | PLANNING | LANDSCAPE ARCHITECTURE

August 2010
 SHEET 17 OF 129