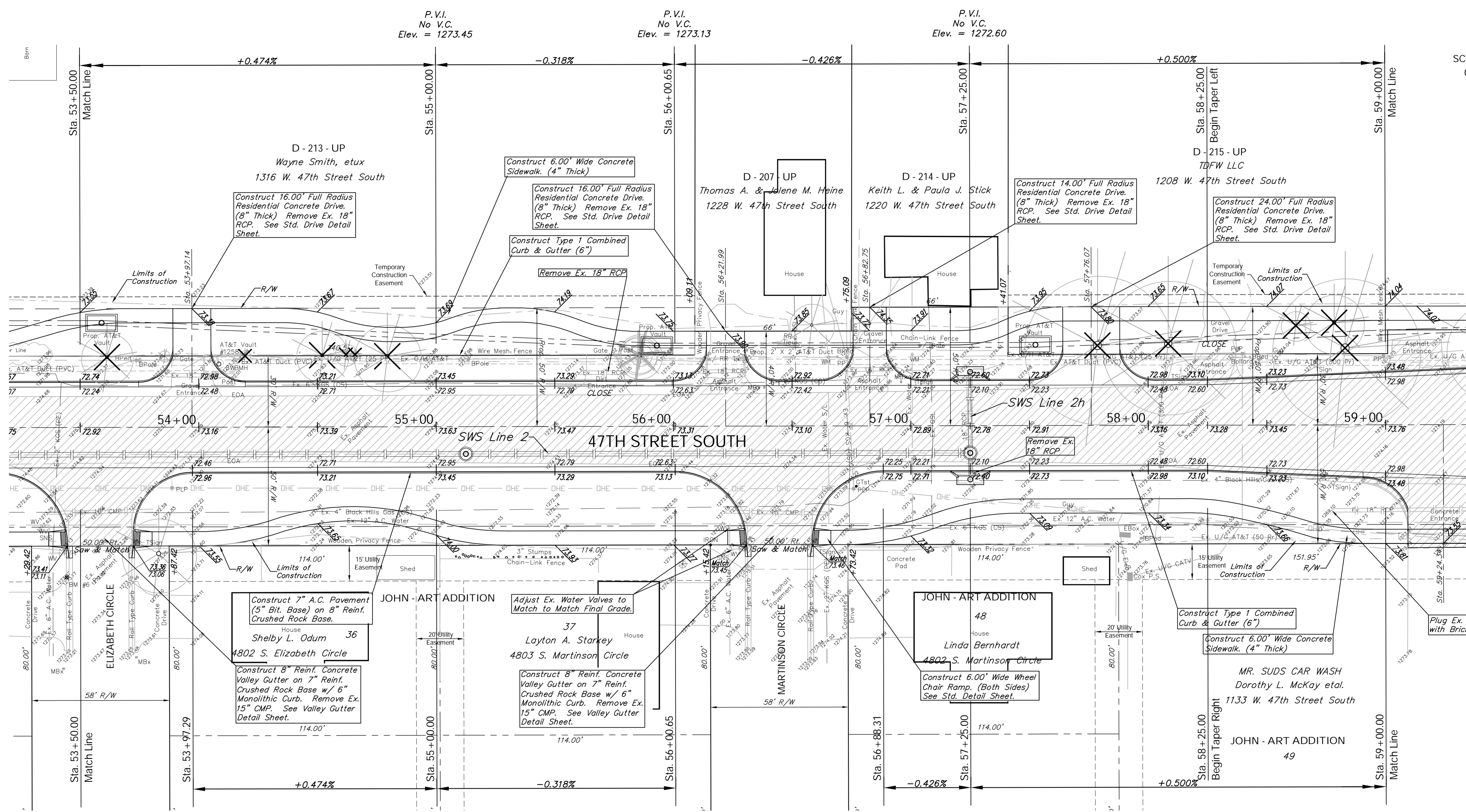
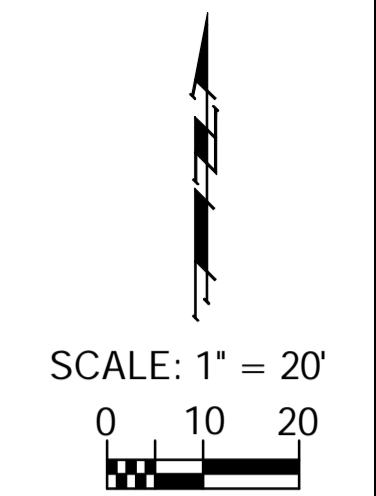


BENCHMARK:
 BM #6 - Cut into Top of Curb in the Southwest Corner of the Intersection of 47th Street South and Elizabeth Circle
 Sta. 53+44, 6.3' Rt.
 Elev. = 1273.40 (MSL)

FHWA REGION NO.	STATE	PROJECT NO.	FISCAL YEAR	SHEET NO.	TOTAL SHEETS
7	KANSAS	87 N-0394-01	2010	20	129



Construct 7" A.C. Pavement (5" Bit. Base) on 8" Reinf. Crushed Rock Base.
 Shelby L. Odum 36
 4802 S. Elizabeth Circle
 Construct 8" Reinf. Concrete Valley Gutter on 7" Reinf. Crushed Rock Base w/ 6" Monolithic Curb. Remove Ex. 15" CMP. See Valley Gutter Detail Sheet.

Adjust Ex. Water Valves to Match to Match Final Grade.
 37
 Layton A. Starkey House
 4803 S. Martinson Circle
 Construct 8" Reinf. Concrete Valley Gutter on 7" Reinf. Crushed Rock Base w/ 6" Monolithic Curb. Remove Ex. 15" CMP. See Valley Gutter Detail Sheet.

JOHN - ART ADDITION
 48
 Linda Bernhardt House
 4802 S. Martinson Circle
 Construct 6.00' Wide Wheel Chair Ramp. (Both Sides) See Std. Detail Sheet.

Construct Type 1 Combined Curb & Gutter (6")
 Construct 6.00' Wide Concrete Sidewalk (4" Thick)
 MR. SUDS CAR WASH
 Dorothy L. McKay et al.
 1133 W. 47th Street South
 JOHN - ART ADDITION
 49

Existing Mailboxes that Conflict with the Proposed Construction Shall be Removed and Reset on Non-Hazardous Supports. Cost to be SUBSIDIARY to "Site Restoration."

Note:
 Pavement, Sidewalks, and Etc. To Be Removed Are Indicated By:

Note:
 Trees/Shrubs to be removed are marked thus:

Design: TPV
 Drawn: STAFF
 Approved: TPV
 Scale: Noted

47TH STREET SOUTH PAVING
 Sta. 53 + 50.00 to Sta. 59 + 00.00
 47TH STREET SOUTH - MERIDIAN AVENUE to SENECA STREET